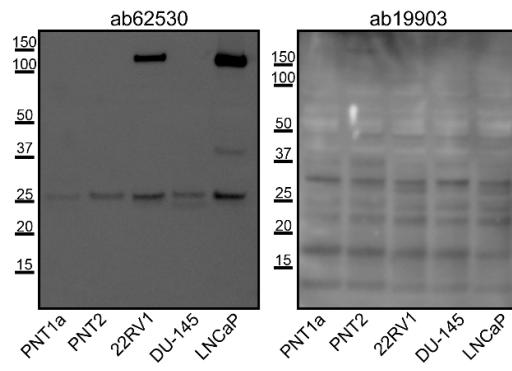
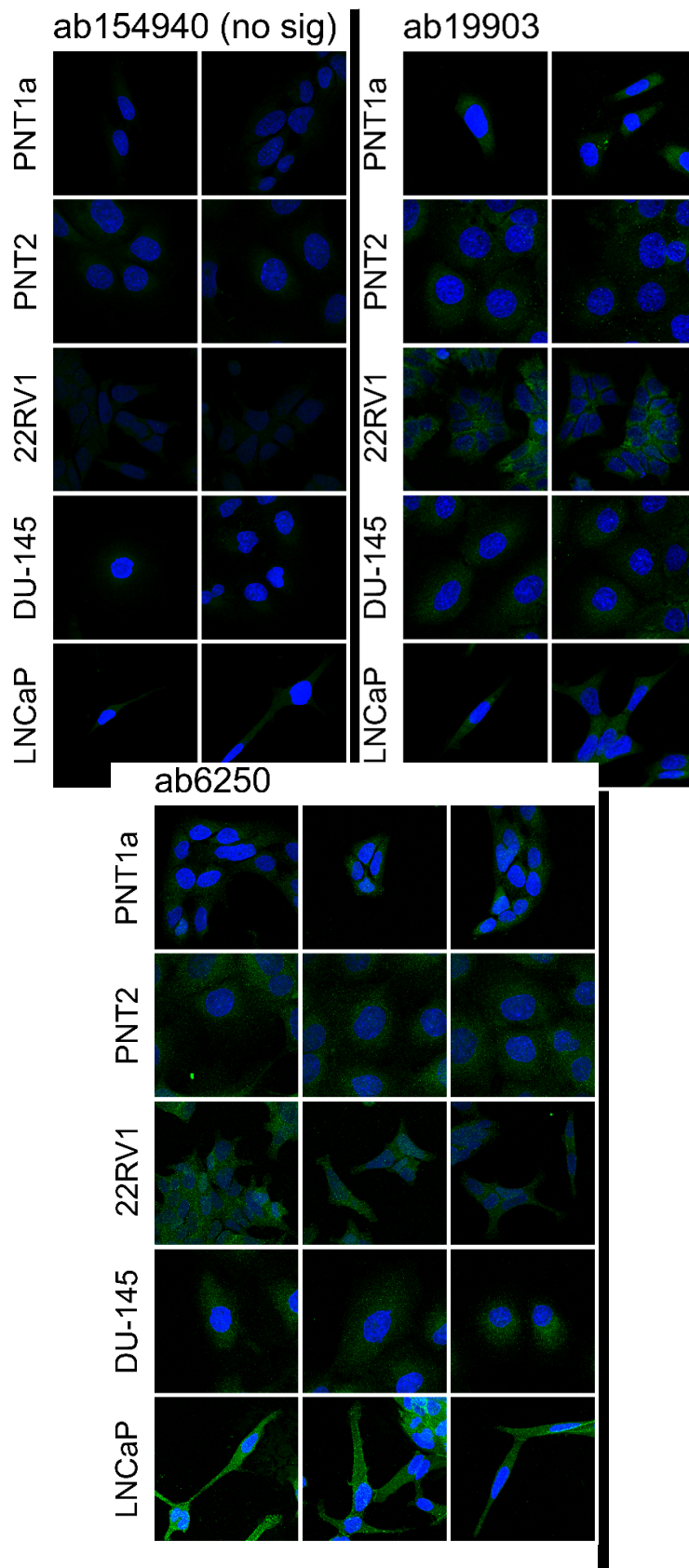


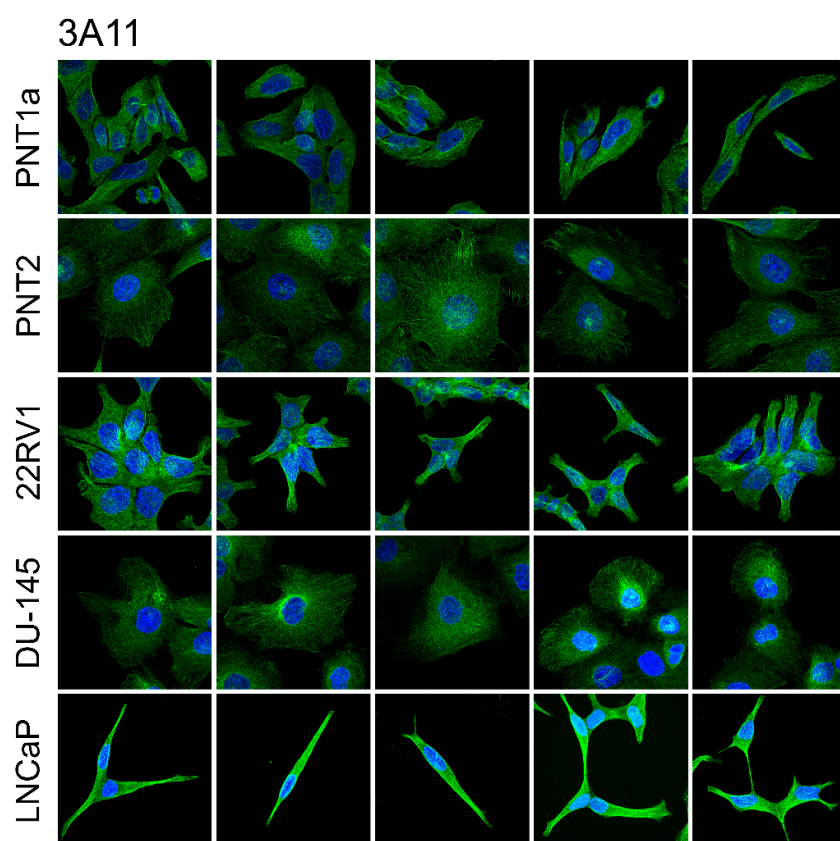
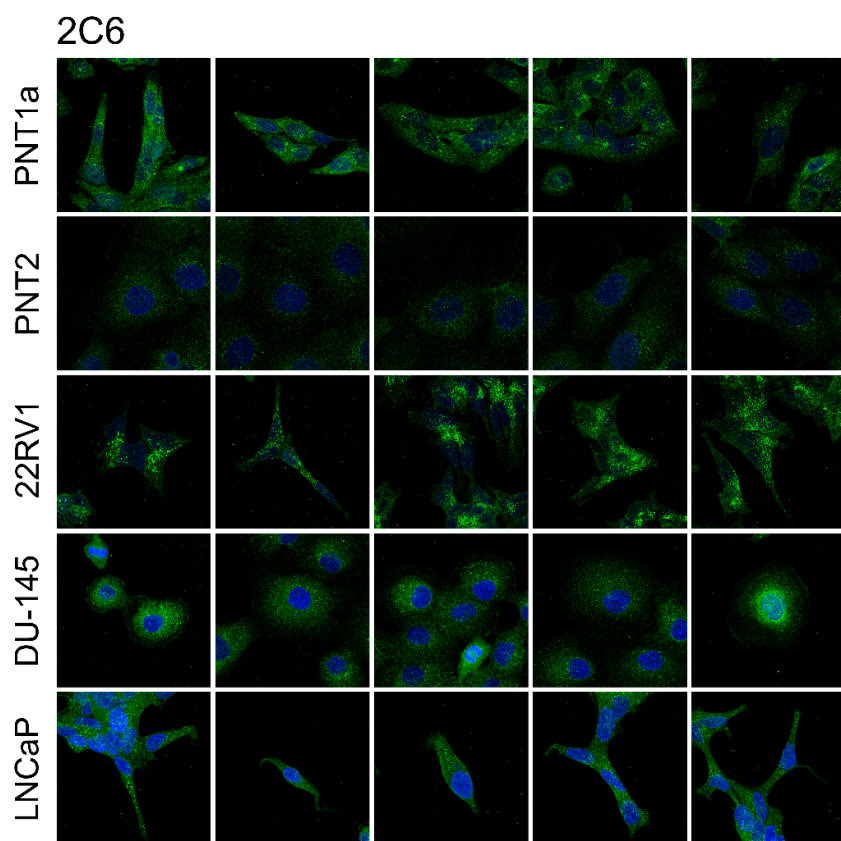
SUPPLEMENTARY DATA



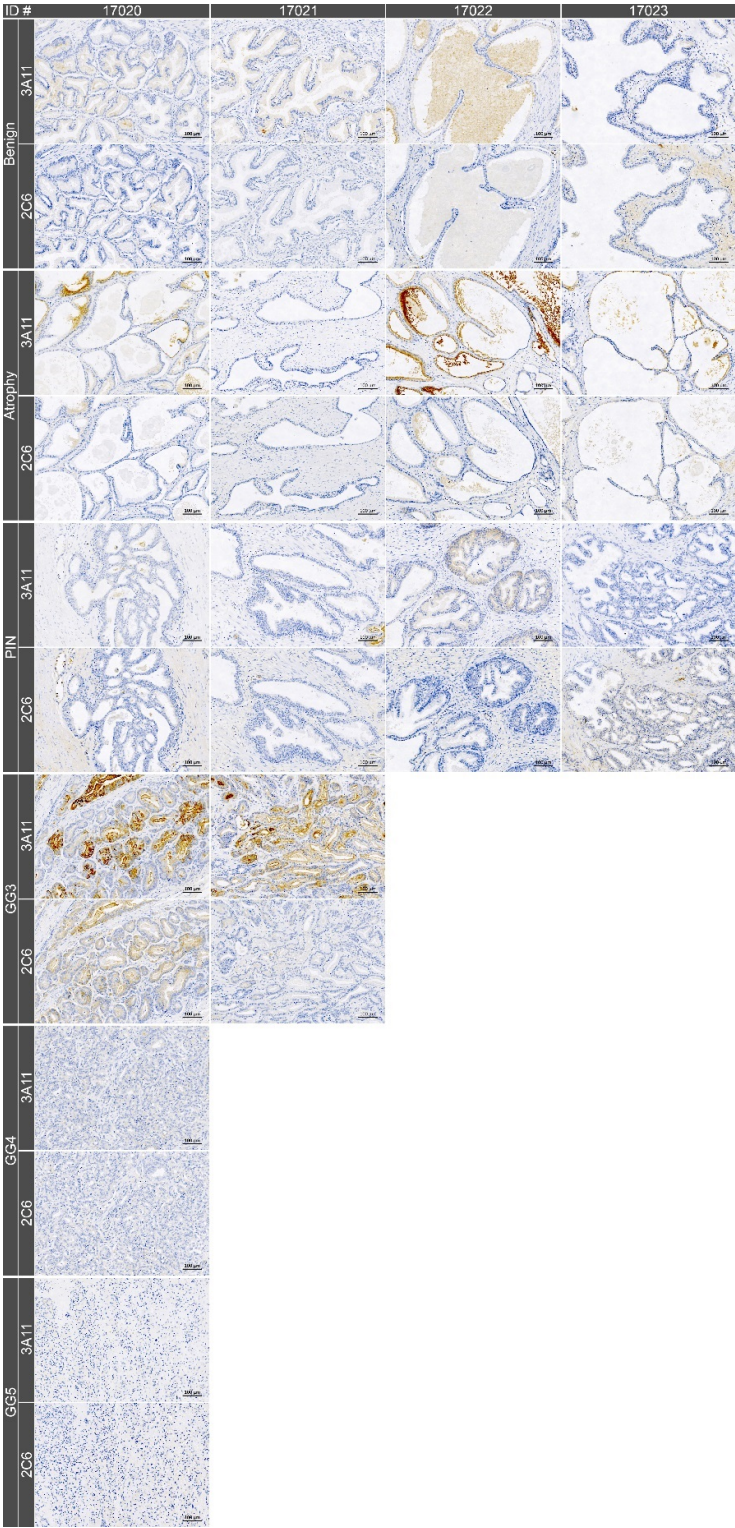
**Figure S1.** Western blotting of ab62530 and ab19903 on whole cell extracts.



**Figure S2.** Immunofluorescence on fixed and permeabilised cells using ab62530, ab19903 and ab154940.



**Figure S3.** Additional immunofluorescence staining of prostate cells using Synt-2C6 and Synt-3A11.



**Figure S4.** Additional immunohistochemistry staining of human prostate tissue sections using Synt-3A11 (0.13 ng/mL) and Synt-2C6 (0.26 ng/mL).