

Regulatory T Cells Exhibit Interleukin-33-Dependent Migratory Behavior during Skin Barrier Disruption

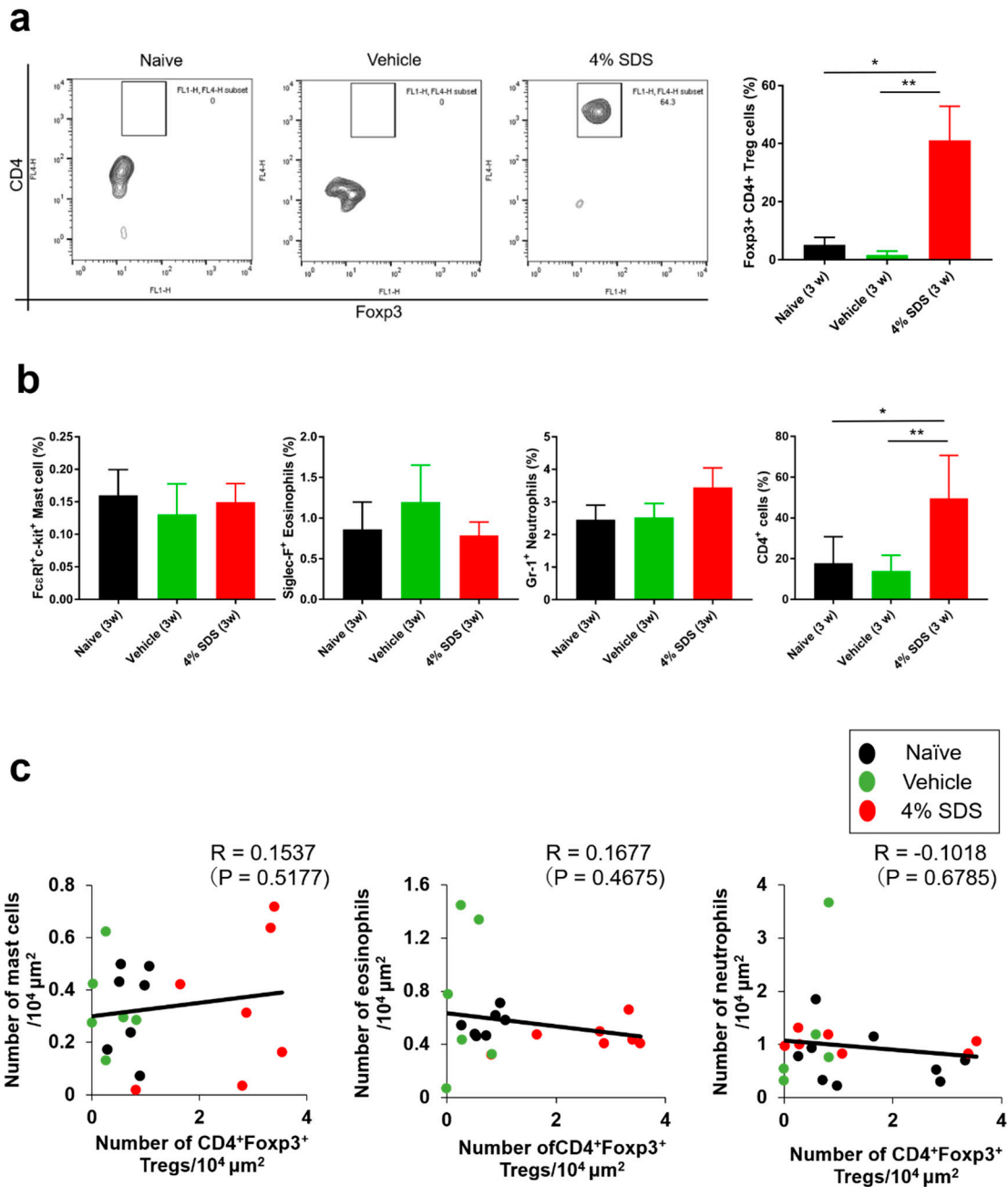
Sumika Toyama ¹, Catharina Sagita Moniaga ¹, Susumu Nakae ², Masaru Kurosawa ¹,
Hideoki Ogawa ¹,
Mitsutoshi Tominaga ¹ and Kenji Takamori ^{1,3,*}

¹ Juntendo Itch Research Center (JIRC), Institute for Environmental and Gender Specific Medicine,
Juntendo University Graduate School of Medicine, 2-1-1 Tomioka, Urayasu,
Chiba 279-0021, Japan;
su-toyama@juntendo.ac.jp (S.T.); m-catharina@juntendo.ac.jp (C.S.M.);
mskurosa@juntendo.ac.jp (M.K.); ogawa@juntendo.ac.jp (H.O.);
tominaga@juntendo.ac.jp (M.T.)

² Graduate School of Integrated Sciences for Life, Hiroshima University, 1-4-4
Kagamiyama,
Higashi-Hiroshima, Hiroshima 739-8528, Japan; snakae@hiroshima-u.ac.jp

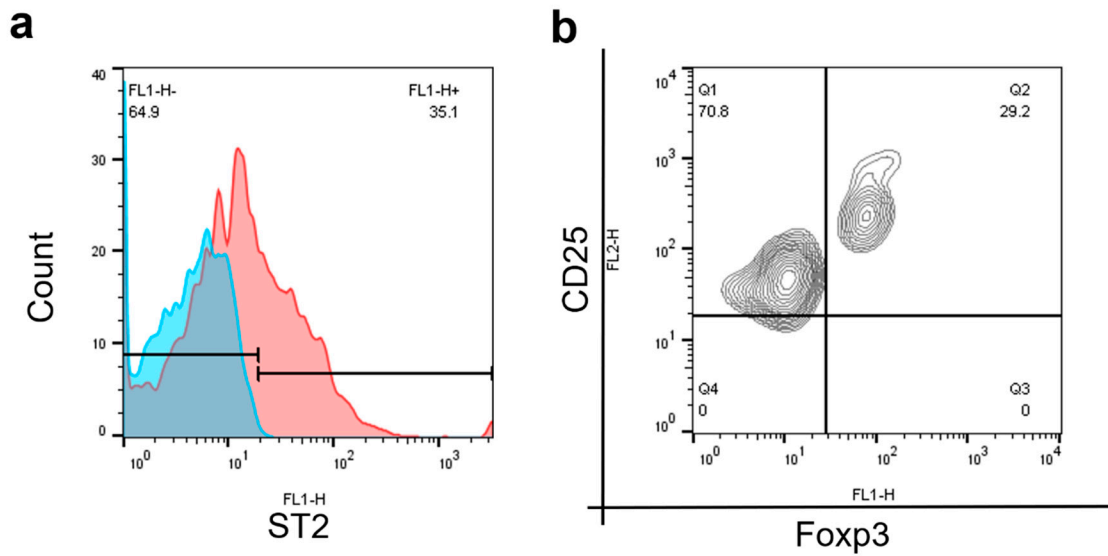
³ Department of Dermatology, Juntendo University Urayasu Hospital, 2-1-1
Tomioka, Urayasu,
Chiba 279-0021, Japan

* Correspondence: ktakamor@juntendo.ac.jp; Tel.: +81-47-353-3171; Fax: +81-47-353-3178



Supplementary Figure S1. Correlation analyses between Treg infiltration and mast cell, eosinophil and neutrophil infiltration. a; The proportion of CD4⁺Foxp3⁺ Treg cells among CD25⁺ cells was assessed by flow cytometry. Data show representative results from 8 mice of naïve, vehicle-treated and 4% SDS-treated skins per experiment and from

at least two independent experiments, each of which gave similar results. b; Percentage of FcεRI⁺c-kit⁺ mast cells, Siglec-F⁺ eosinophils, Gr-1⁺ Neutrophils and CD4⁺ cells in the skin. Data show representative results from 8-12 mice of naïve, vehicle-treated and 4% SDS-treated skins per experiment and from at least two independent experiments, each of which gave similar results. *P<0.05 and ** P<0.01 compared with naïve or vehicle-treated mice by the Kruskal-Wallis with Dunn's multiple-comparison test. c; Scatterplots of correlations between Treg number and the number of mast cells, eosinophils or neutrophils; N=21 (Naïve; N=7, Vehicle; N=6, 4% SDS; N=8). Coefficients (r) were determined by Spearman rank correlation tests. P<0.05 indicated significance. Results are shown as the mean ± SEM of two independent experiments.



Supplementary Figure S2. Expression analysis of ST2 or Foxp3 in isolated

CD4⁺CD25⁺ Tregs. a; The proportion of ST2⁺ Treg cells among CD4⁺ CD25⁺ T cells was

assessed by flow cytometry. Data show representative results from 4 mice of naïve mice

in spleen per experiment and from at least two independent experiments, each of which

gave similar results. b; The proportion of Foxp3⁺ Treg cells among CD4⁺ CD25⁺ T cells

was assessed by flow cytometry. Data show representative results from 4 mice of naïve

mice in spleen per experiment and from at least two independent experiments, each of

which gave similar results.

