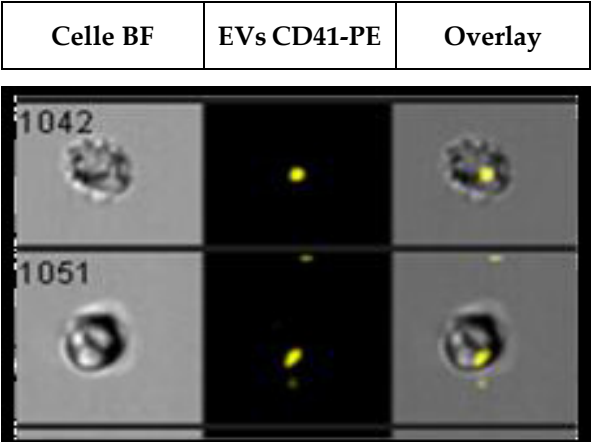


[illegible][illegible]

1



**Figure S3.** Extracellular vesicle cell interaction. Extracellular vesicles (EVs) labeled with anti-CD41-PE (yellow) and added to human umbilical vein endothelial cells. Images of cell uptake of the EVs were recorded in an Amnis flow cytometry device. BF, bright field (left column); fluorescence (middle and right columns).