

Supplementary Material

Figure S1. Sequence alignment of type III L-asparaginase from *M. roseus* (MrAIII) (WP_014855981.1), marked with yellow box, with characterized plant-type L-asparaginases. Conserved catalytic residues are shown in green

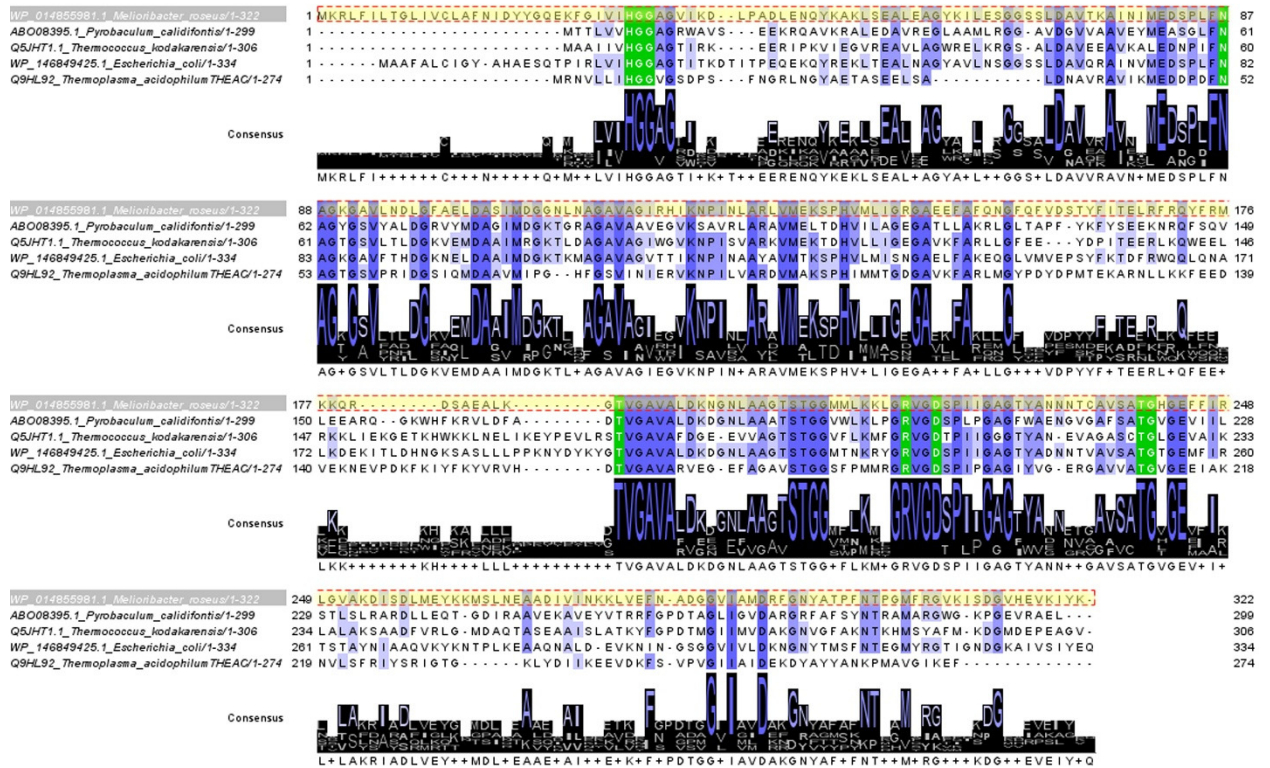


Figure S2. Cytotoxic activity of MrAII against cancer cells. Cancer and normal cells were cultivated for 72 h in the presence of different concentrations of the enzyme.

