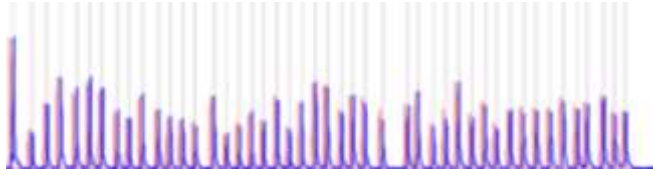
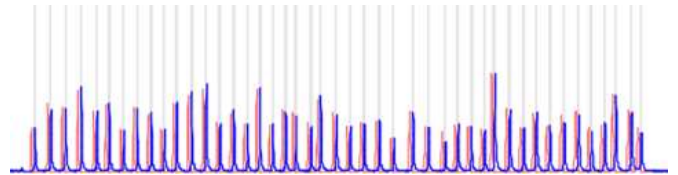


## Supplementary Material II

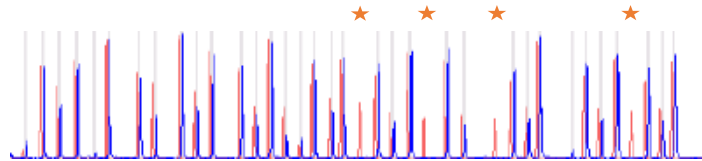
A



B



**Patient`s MLPA results (gDNA).** No deletions or duplications were detected in the *DMD* gene using both probes from MRC-Holland (A-P034; B-035). Patient fragments are shown in blue and control fragments in red.



**Patient`s MLPA results (cDNA).** MLPA probe 034 showed absence of signal from probes detecting the sequence corresponding to exons 75, 76, 77 and 79 (orange stars) of *DMD* gene.