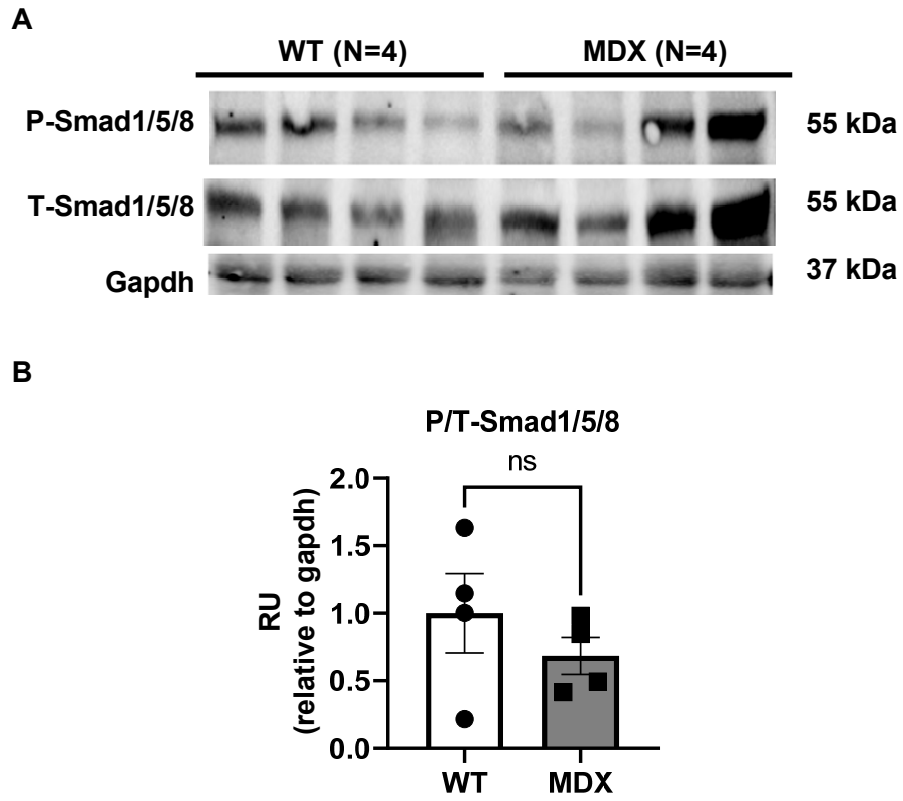


## Supplementary Materials



**Figure S1.** Smad1/5/8 total (T-Smad1/5/8) and phosphorylated (P-Smad1/5/8) protein in 6-month-old *mdx<sup>5cv</sup>* tibialis anterior muscle. (A) Western blot showing T-Smad1/5/8, P-Smad1/5/8, and vinculin. (B) P/T-Smad1/5/8 ratio by densitometry. Data points show biological replicates for each group. Bars show means  $\pm$  SEM. ns, not significant. RU, relative units.

**Table S1 - Taqman Assays for Total RNA**

| Gene         | Assay ID      | Species |
|--------------|---------------|---------|
| <i>BMP4</i>  | hs03676628_s1 | Human   |
| <i>GAPDH</i> | hs02758991_g1 | Human   |
| <i>ID1</i>   | hs03676575_s1 | Human   |
| <i>IL-6</i>  | hs00174131_m1 | Human   |
| <i>MEF2D</i> | hs00954735_m1 | Human   |
| <i>MYOG</i>  | hs01072232_m1 | Human   |
| <i>SMAD1</i> | hs00195432_m1 | Human   |
| <i>SMAD2</i> | hs00998187_m1 | Human   |
| <i>SMAD3</i> | hs00969210_m1 | Human   |
| <i>SMAD5</i> | hs00195437_m1 | Human   |
| <i>SMAD9</i> | hs00931723_m1 | Human   |
| <i>TGFβ1</i> | hs00998133_m1 | Human   |
| <i>Gapdh</i> | mm99999915_g1 | Mouse   |
| <i>Id1</i>   | mm00775963    | Mouse   |
| <i>Il-6</i>  | mm00435493    | Mouse   |
| <i>Mef2d</i> | mm00504931    | Mouse   |
| <i>Myod</i>  | mm00440387    | Mouse   |
| <i>Myog</i>  | mm00446194    | Mouse   |
| <i>Nfkb1</i> | mm00476361    | Mouse   |
| <i>Smad2</i> | mm00487530_m1 | Mouse   |
| <i>Smad3</i> | mm01170760_m1 | Mouse   |
| <i>Smad9</i> | mm00649885_m1 | Mouse   |

**Table S2 - Taqman assays for miRNA**

| miRNA        | Stem / miRBase ID        | Assay ID       | Catalog No. | Species |
|--------------|--------------------------|----------------|-------------|---------|
| miR-1        | hsa-miR-1                | 002222         | PN4427975   | Human   |
| miR-1        | mmu-miR-1a-3p            | 002222         | PN4427975   | Mouse   |
| miR-133a     | hsa-miR-133a             | 002222         | PN4427975   | Human   |
| miR-133a     | mmu-miR-133a-3p          | 002222         | PN4427975   | Mouse   |
| miR-133b     | hsa-miR-133b             | 002222         | PN4427975   | Human   |
| miR-133b     | mmu-miR-133b-3p          | 002222         | PN4427975   | Mouse   |
| pri-miR-1    | mmu-mir-1a-2, mmu-mir-1b | mm03308741_pri | 4427012     | Mouse   |
| pri-miR-133a | mmu-mir-133a-1           | mm03306281_pri | 4427012     | Mouse   |
| pri-miR-133b | mmu-mir-133b             | mm03307410_pri | 4427012     | Mouse   |
| RNU48        | 568908                   | 001006         | PN4427975   | Human   |
| RNU6         | 715680                   | 001973         | PN4427975   | Mouse   |