

Control of directed cell migration after tubular cell injury by nucleotide signaling

Sabrina Gessler¹⁺, Clara Guthmann¹⁺, Vera Schuler¹⁺, Miriam Lilienkamp¹⁺, Gerd Walz^{1,2} and Toma Antonov Yakulov^{1,*}

¹ Renal Division, University Freiburg Medical Center, Faculty of Medicine, University of Freiburg, Hugstetter Strasse 55, 79106 Freiburg, Germany; sabrina.gessler@gmx.net (S.G.), clara@guthmann.eu (C.G.), miriam.lilienkamp@freenet.de (M.L.), vera.schuler@gmx.de (V.S.), gerd.walz@uniklinik-freiburg.de (G.W.), toma.antonov.yakulov@uniklinik-freiburg.de (T.A.Y.)

² Signaling Research Centres BIOSS and CIBSS, University of Freiburg, Albertstrasse 19, 79104 Freiburg, Germany; gerd.walz@uniklinik-freiburg.de (G.W.)

+ Equal contribution

* Correspondence: toma.antonov.yakulov@uniklinik-freiburg.de

Figure S1

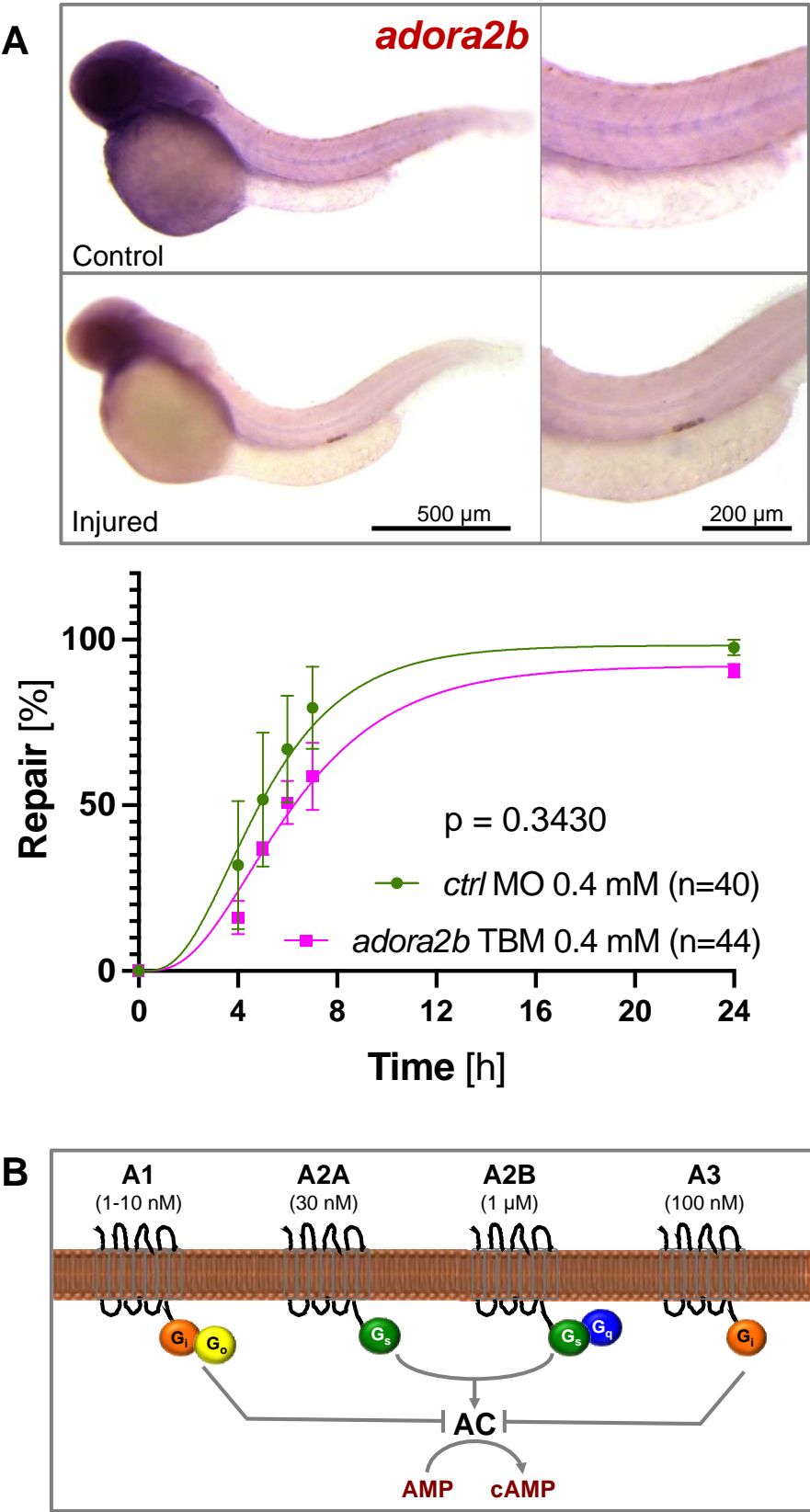


Figure S2

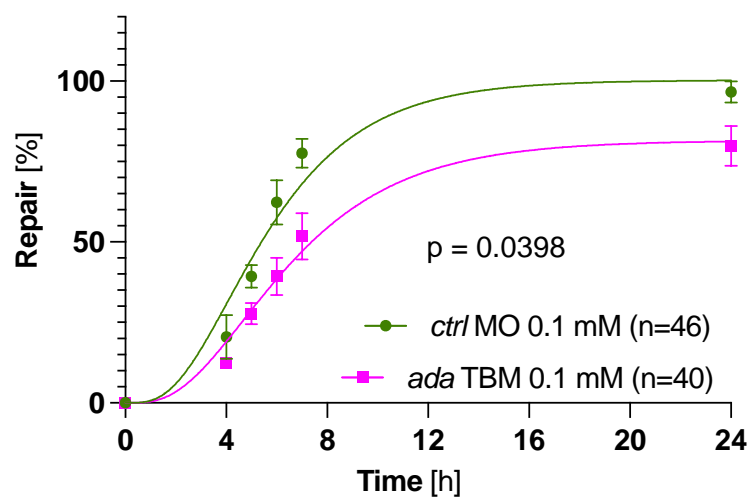


Figure S3

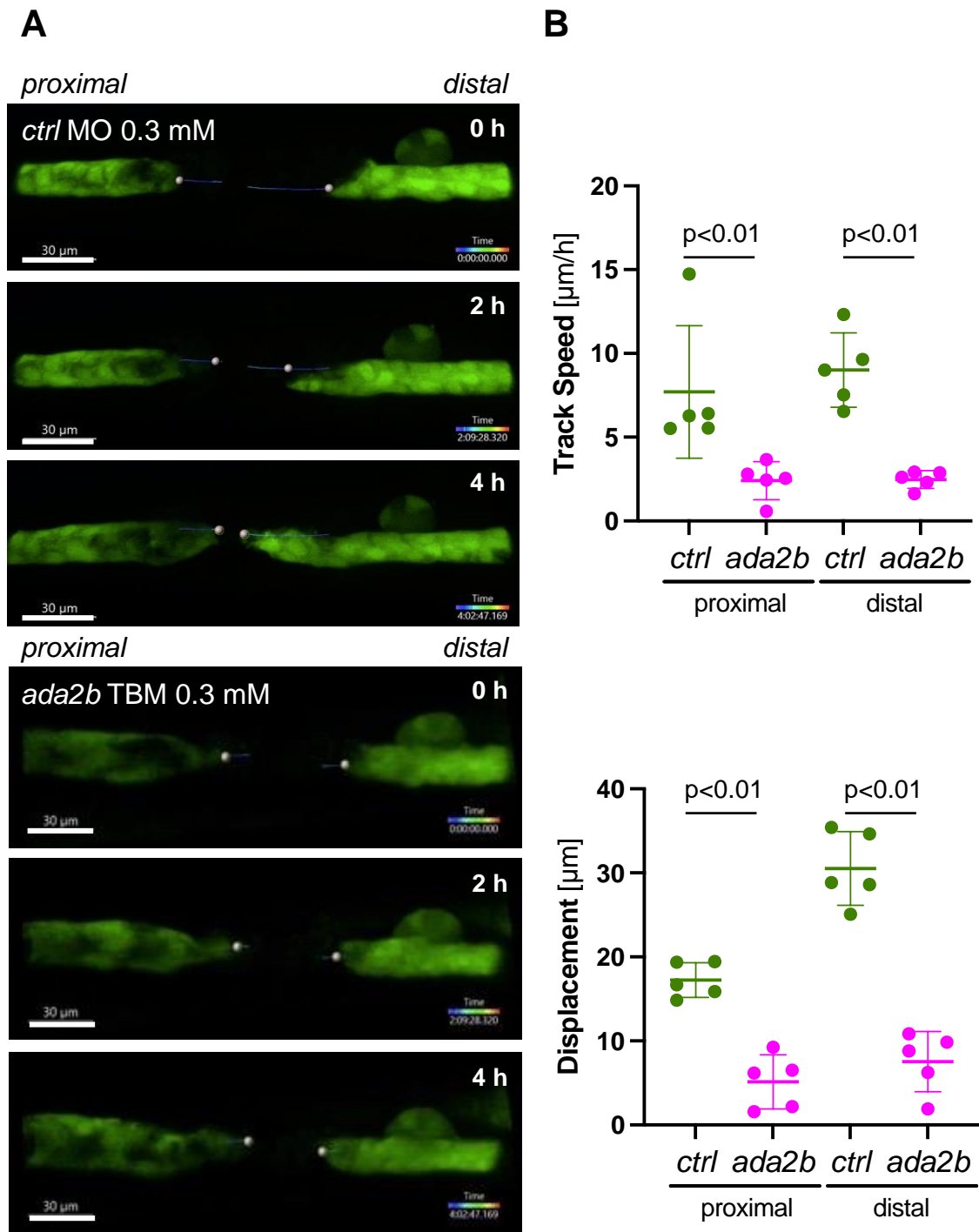


Figure S4

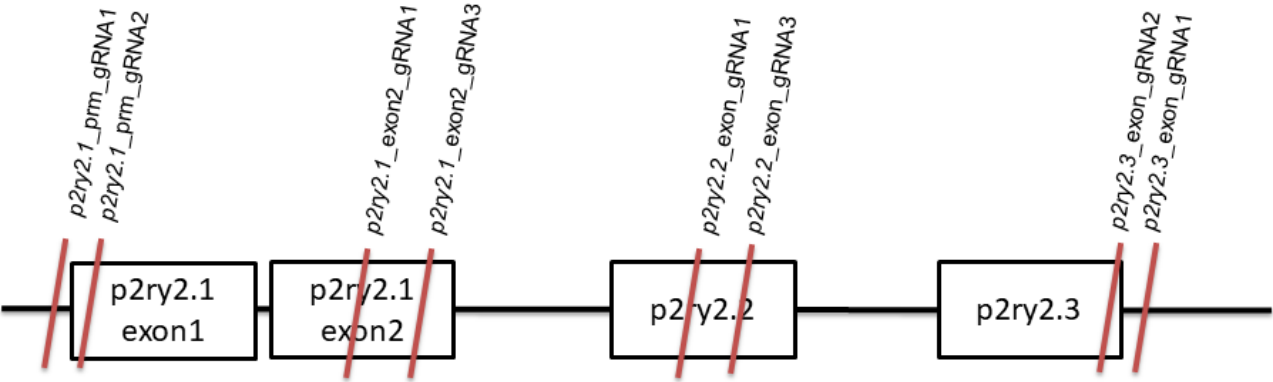


Figure S5

