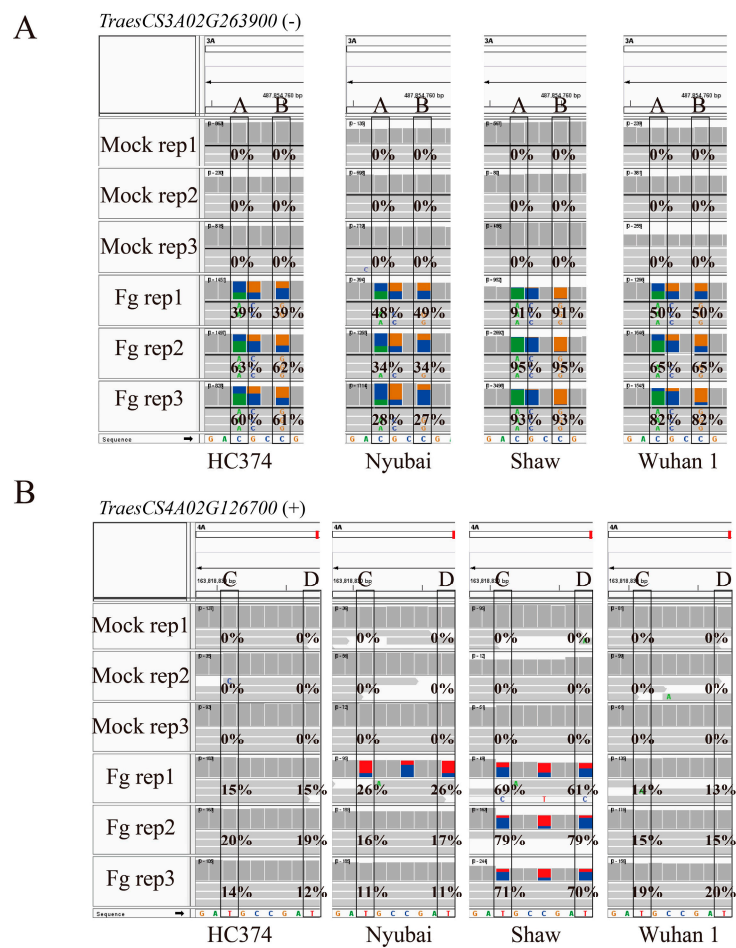
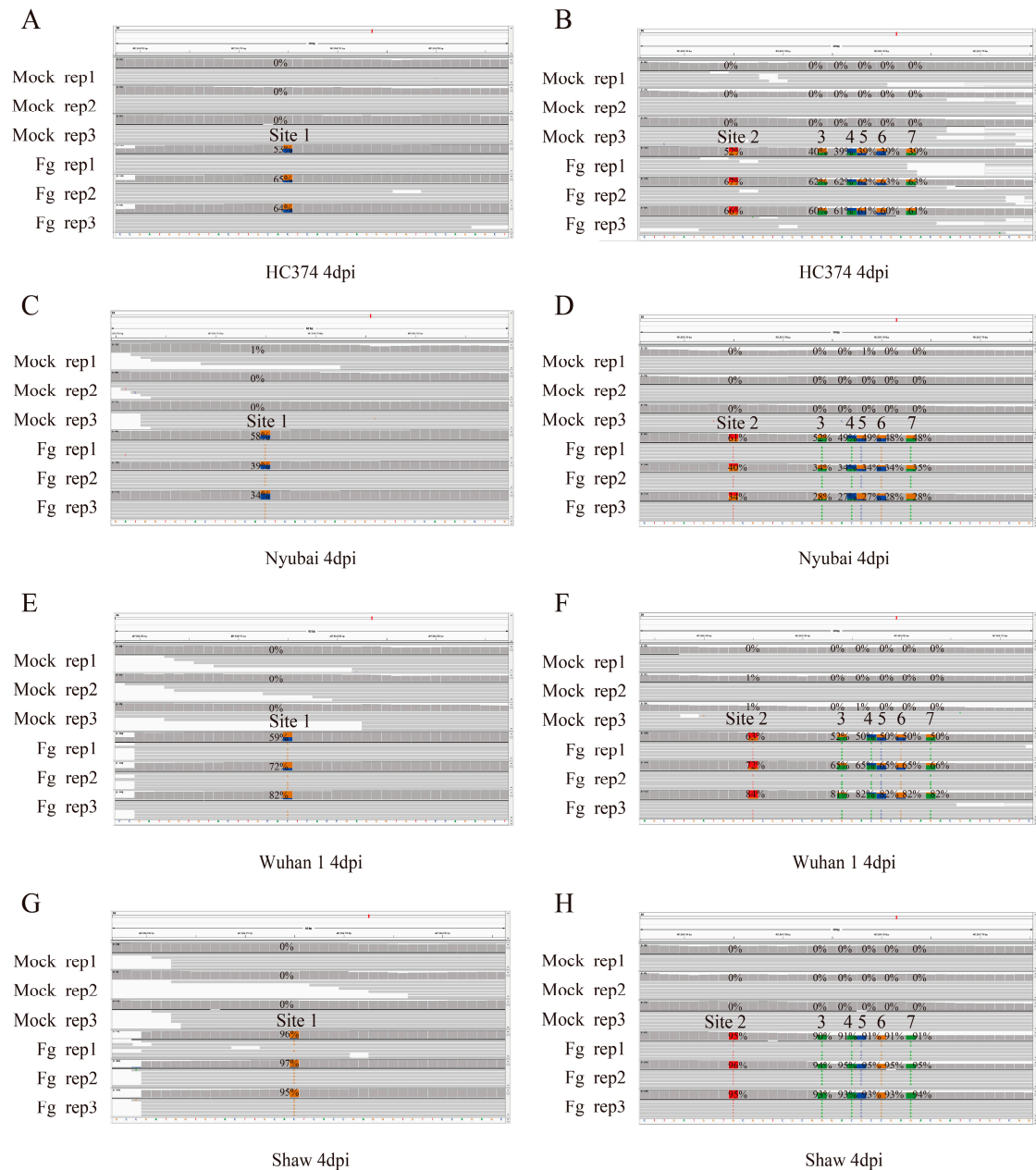


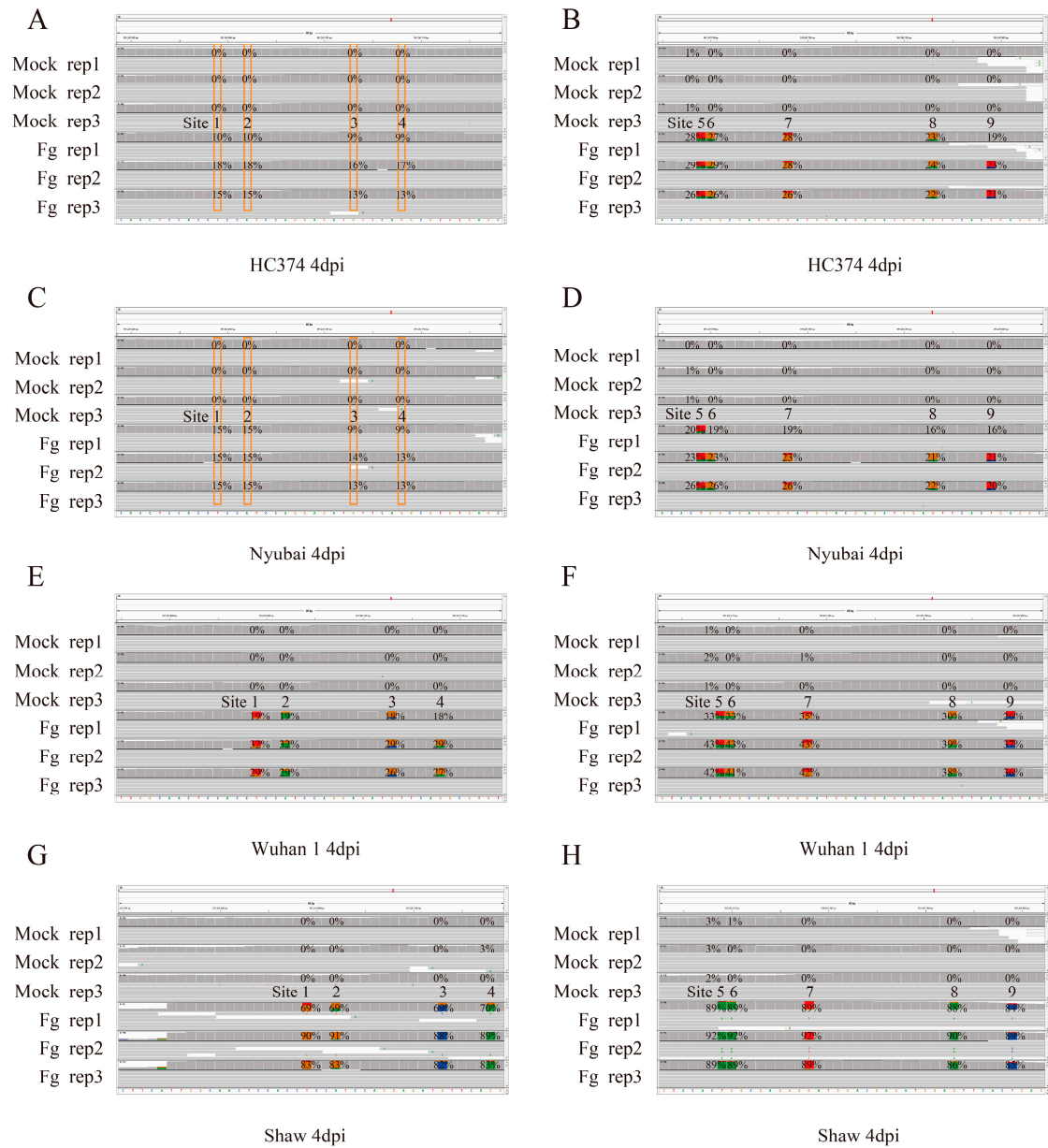
## Supplementary Figures



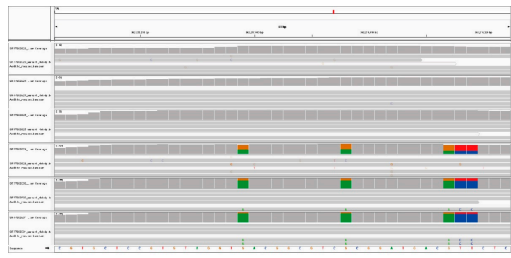
**Figure S1 IGV results of RDD events in *TraesCS3A02G263900* (A) and *TraesCS4A02G126700* (B). RDD of A-D indicate chr3A\_487854757, chr3A\_487854760, chr4A\_163818831 and chr4A\_163818837, respectively. The numbers on reads represent the editing efficiency of RDD sites in each sample. Mock: Control group. Fg: Treatment group.**



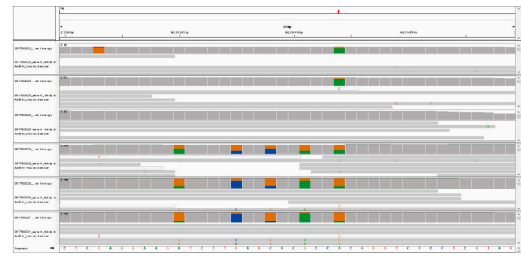
**Figure S2. IGV results of RDD events in TraesCS3A02G263900.** (A) Site 1 in 4 dpi of HC374. (B) Site 2-7 in 4 dpi of HC374. (C) Site 1 in 4 dpi of Nyubai. (D) Site 2-7 in 4 dpi of Nyubai. (E) Site 1 in 4 dpi of Wuhan 1. (F) Site 2-7 in 4 dpi of Wuhan 1. (G) Site 1 in 4 dpi of Shaw. (H) Site 2-7 in 4 dpi of Shaw. The numbers on reads represent the editing efficiency of RDD sites in each sample. Mock: Control group. Fg: Treatment group.



**Figure S3. IGV results of RDD events in TraesCS1D02G258800.** (A) Site 1-4 in 4 dpi of HC374. (B) Site 5-9 in 4 dpi of HC374. (C) Site 1-4 in 4 dpi of Nyubai. (D) Site 5-9 in 4 dpi of Nyubai. (E) Site 1-4 in 4 dpi of Wuhan 1. (F) Site 5-9 in 4 dpi of Wuhan 1. (G) Site 1-4 in 4 dpi of Shaw. (H) Site 5-9 in 4 dpi of Shaw. The numbers on reads represent the editing efficiency of RDD sites in each sample. Mock: Control group. Fg: Treatment group.



chr1A\_362209999,chr1A\_362210008,  
chr1A\_362210017,chr1A\_362210018,chr1A\_362210019



chr1A\_362210030,chr1A\_362210035,  
chr1A\_362210038,chr1A\_362210041,chr1A\_362210044



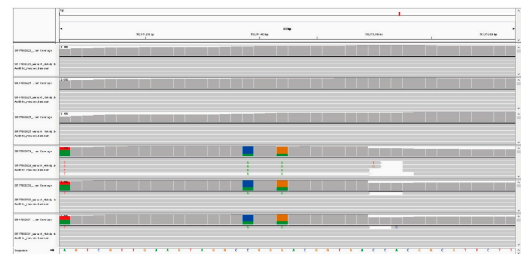
chr1A\_452020765,chr1A\_452020771



chr1A\_452020810,chr1A\_452020822



chr1B\_512174375,chr1B\_512174382,chr1B\_512174383



chr1B\_512174399,chr1B\_512174402



chr1D\_66556087



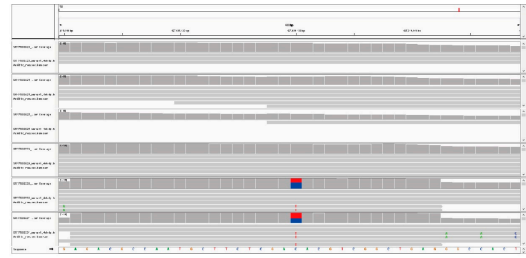
chr1D\_351247689,chr1D\_351247692,chr1D\_351247703,  
chr1D\_351247708

**Figure S4. IGV results of 24 RDD sites of TraesCS1A02G201300, TraesCS1A02G258800, TraesCS1B02G294300, TraesCS1D02G083600 and TraesCS1D02G258800.**





chrID\_351247769,chrID\_351247770,chrID\_351247778,  
chrID\_351247793,chrID\_351247799



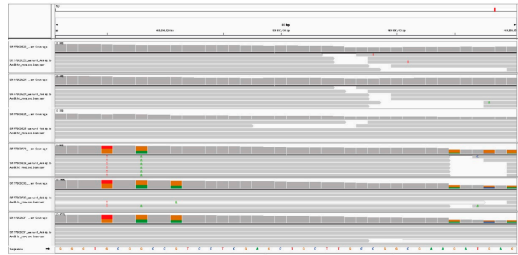
chrID\_427619130



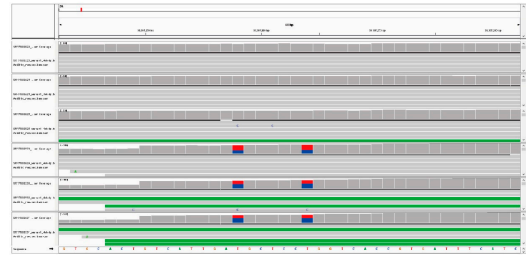
chrID\_469890349,chrID\_469890358,chrID\_469890367



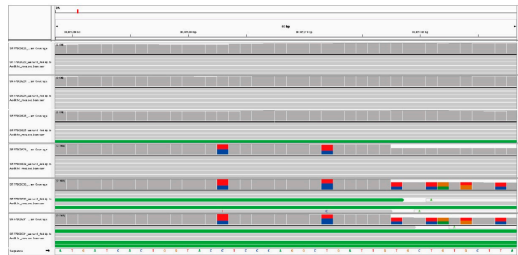
chrID\_469890382,chrID\_469890385,chrID\_469890408



chrID\_469890415,chrID\_469890418



chr2A\_38305258,chr2A\_38305264

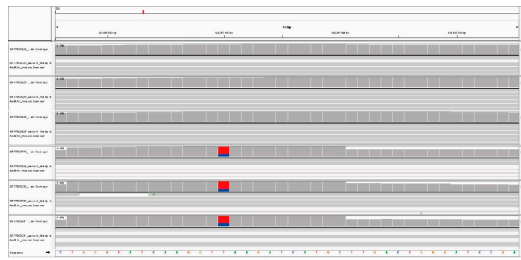


chr2A\_38305303,chr2A\_38305312

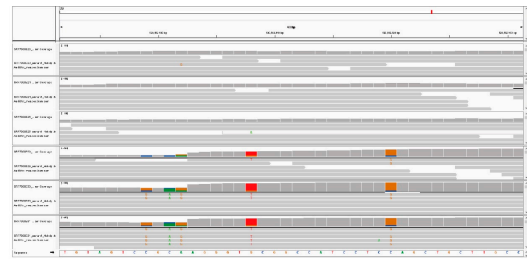


chr2B\_190659662

**Figure S5. IGV results of 19 RDD sites of TraesCS1D02G258800, TraesCS1D02G338400, TraesCS1D02G405400, TraesCS2A02G083300 and TraesCS2B02G209100.**



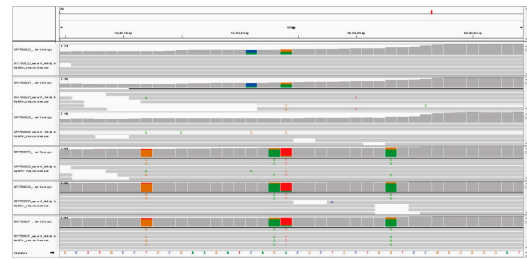
chr2D\_123097910



chr2D\_520582908



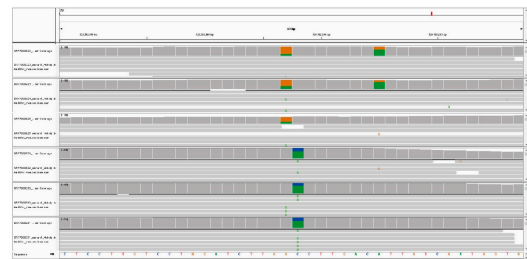
chr2D\_520582920



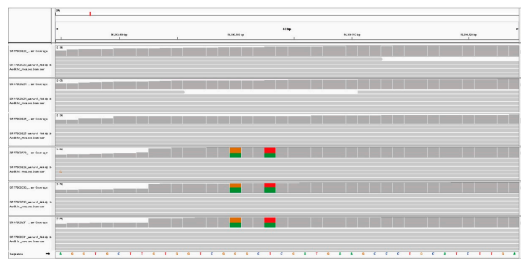
chr2D\_520582943



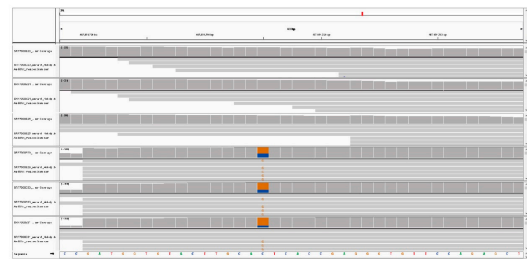
chr2D\_520582953



chr2D\_520582988

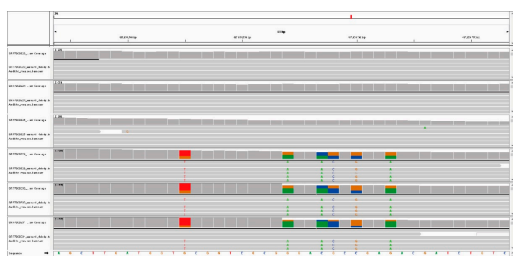


chr3A\_56390500,chr3A\_56390503

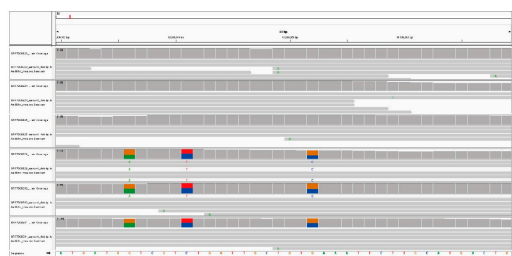


chr3A\_487854715

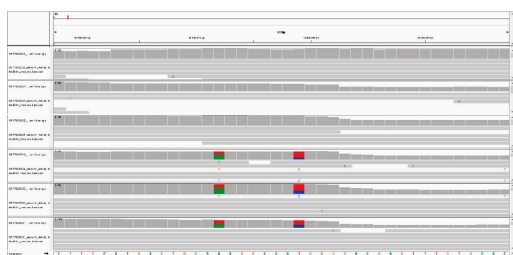
**Figure S6. IGV results of 9 RDD sites of TraesCS2D02G179300, TraesCS2D02G405500, TraesCS3A02G087300 and TraesCS3A02G263900.**



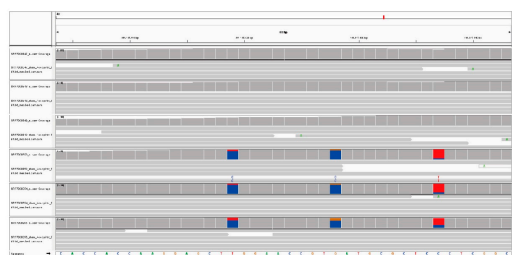
chr3A\_487854745,chr3A\_487854754,chr3A\_487854757,  
chr3A\_487854758,chr3A\_487854760,chr3A\_487854763



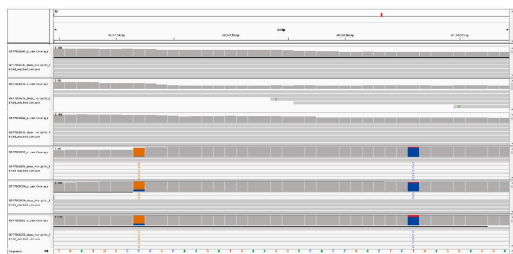
chr3D\_18908936,chr3D\_18908941,chr3D\_18908952



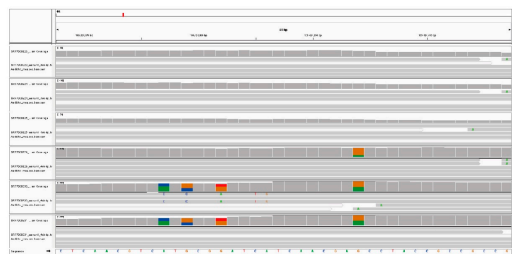
chr3D\_18908972,chr3D\_18908979



chr3D\_441147419,chr3D\_441147428



chr3D\_441147542,chr3D\_441147566



chr4A\_109424377,chr4A\_109424379,  
chr4A\_109424382,chr4A\_109424394

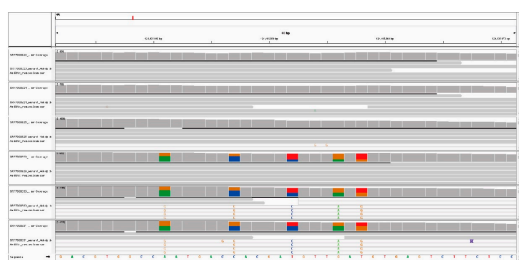


chr4A\_124405655,chr4A\_124405661,  
chr4A\_124405673,chr4A\_124405675,chr4A\_124405688



chr4A\_124405703

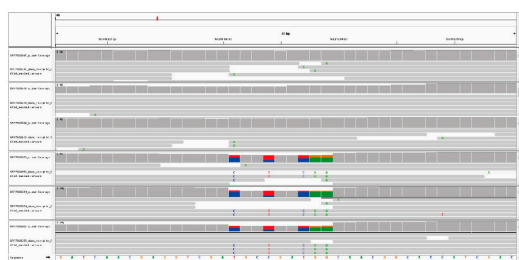
**Figure S7. IGV results of 25 RDD sites of TraesCS3A02G263900, TraesCS3D02G049300, TraesCS3D02G328300, TraesCS4A02G097900 and TraesCS4A02G107600.**



chr4A\_124405841,chr4A\_124405847,chr4A\_124405852,  
chr4A\_124405856,chr4A\_124405858



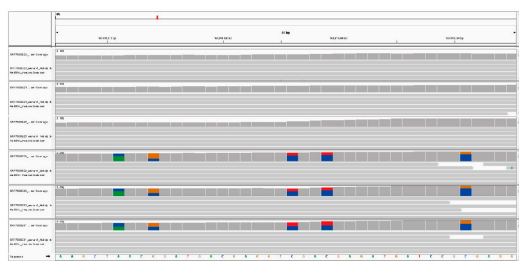
chr4A\_163818861,chr4A\_163818870,chr4A\_163818872,  
chr4A\_163818874,chr4A\_163818882



chr4A\_163818831,chr4A\_163818834,chr4A\_163818837,  
chr4A\_163818838,chr4A\_163818839



chr4A\_163818906



chr4A\_163819011,chr4A\_163819014,chr4A\_163819026,  
chr4A\_163819029,chr4A\_163819041



chr4A\_469102263,chr4A\_469102264,chr4A\_469102283



chr4B\_168566902

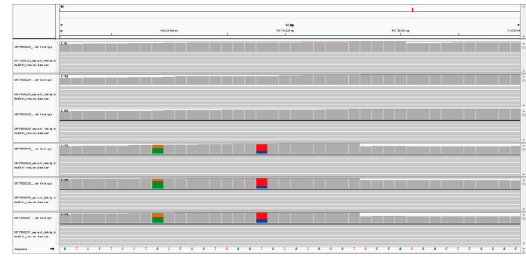


chr4B\_390280808,chr4B\_390280829,chr4B\_390280835,  
chr4B\_390280839,chr4B\_390280840

**Figure S8. IGV results of 30 RDD sites of TraesCS4A02G107600, TraesCS4A02G126700, TraesCS4A02G190500, TraesCS4B02G128700 and TraesCS4B02G178200.**



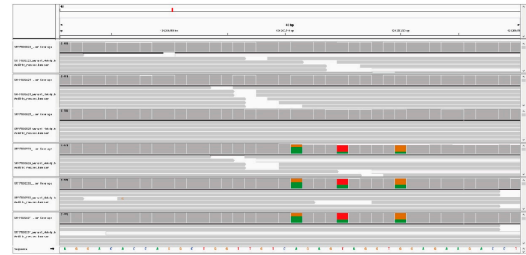
chr4B\_390280862,chr4B\_390280871,chr4B\_390280873,  
chr4B\_390280875,chr4B\_390280883



chr4B\_513725918



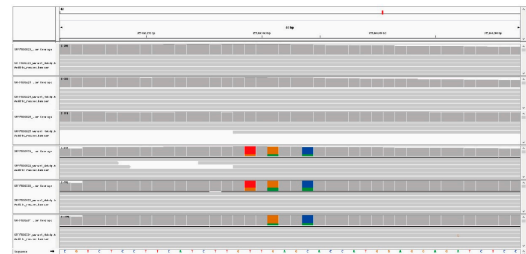
chr4D\_124260478,chr4D\_124260481



chr4D\_124260511,chr4D\_124260515,chr4D\_124260520



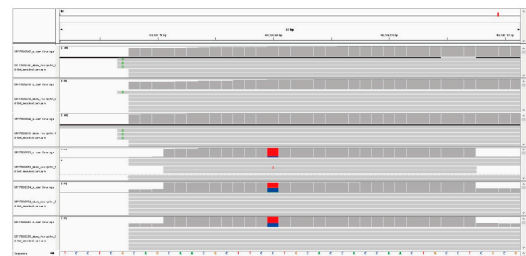
chr4D\_3558599680



chr4D\_355860059,chr4D\_355860061,chr4D\_355860064

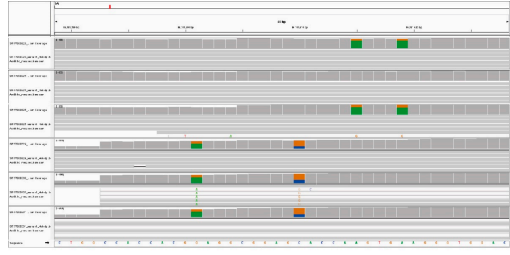


chr4D\_355860084,chr4D\_355860088

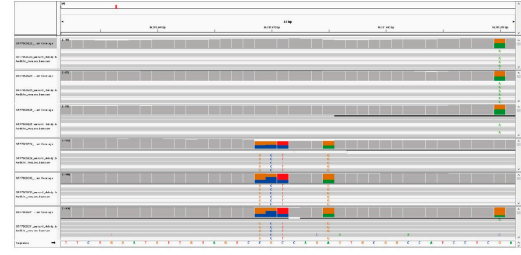


chr4D\_483138160

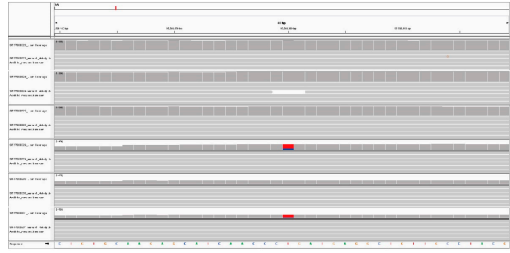
**Figure S9. IGV results of 18 RDD sites of TraesCS4B02G178200, TraesCS4B02G248500, TraesCS4D02G140800, TraesCS4D02G207500 and TraesCS4D02G319400.**



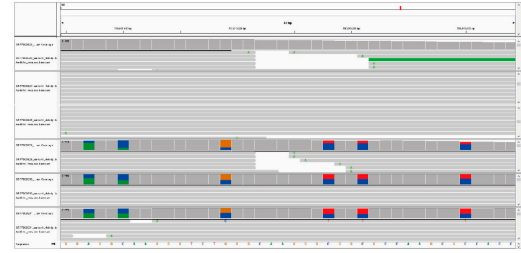
chr5A\_86181601,chr5A\_86181610



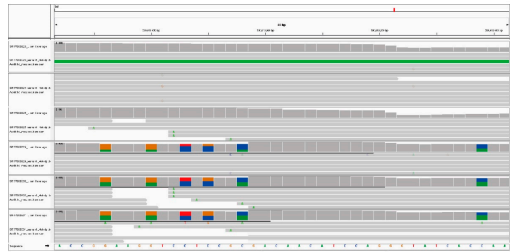
chr5A\_86181649,chr5A\_86181650,chr5A\_86181651,  
chr5A\_86181655



chr5A\_95568180



chr5B\_530613607,chr5B\_530613610,chr5B\_530613619,  
chr5B\_530613628,chr5B\_530613631,chr5B\_530613640



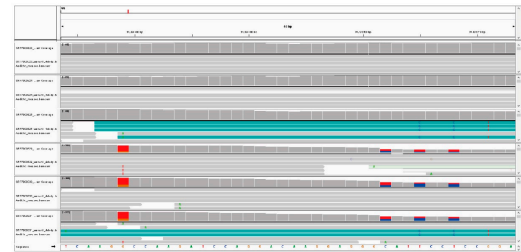
chr5B\_530613646,chr5B\_530613650,chr5B\_530613653,  
chr5B\_530613655,chr5B\_530613658,chr5B\_530613679



chr6A\_91424406

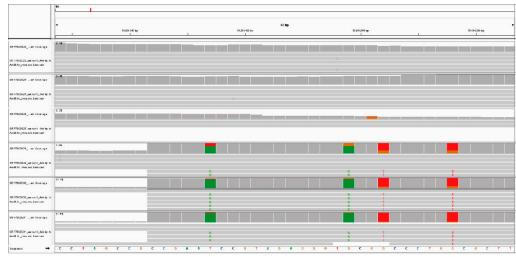


chr6A\_91424424,chr6A\_91424427,chr6A\_91424433,  
chr6A\_91424439,chr6A\_91424451

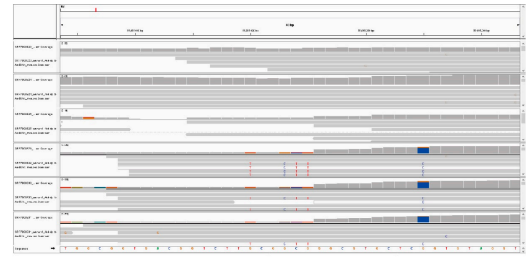


chr6A\_91424479,chr6A\_91424508

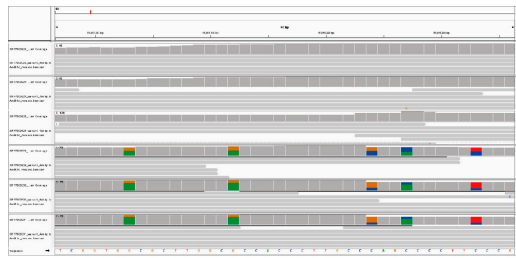
**Figure S10. IGV results of 27 RDD sites of TraesCS5A02G073800, TraesCS5A02G078000, TraesCS5B02G349100, TraesCS6A02G119700 and TraesCS6A02G119800.**



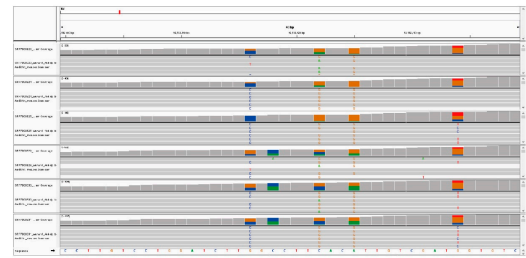
chr6B\_55694957,chr6B\_55694969,chr6B\_55694978



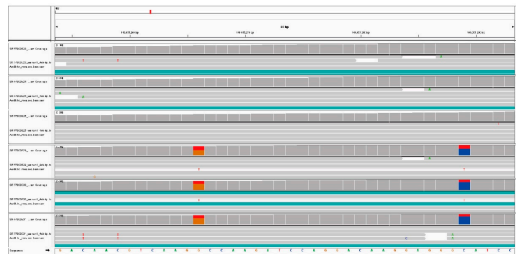
chr6B\_55695035



chr6B\_55695203,chr6B\_55695212,chr6B\_55695224,  
chr6B\_55695227,chr6B\_55695233



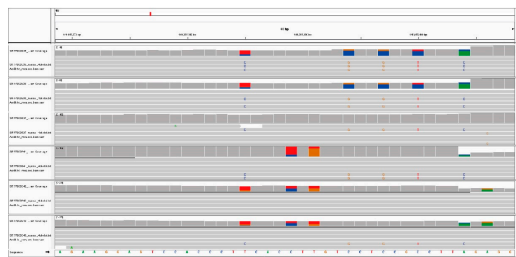
chr6B\_92532418



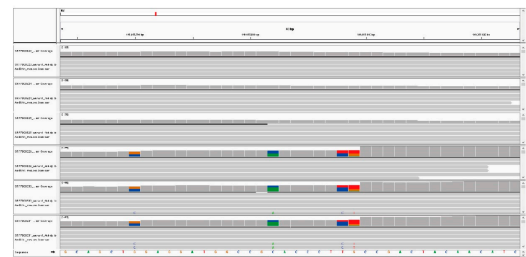
chr6B\_149055266,chr6B\_149055289



chr6B\_149055310



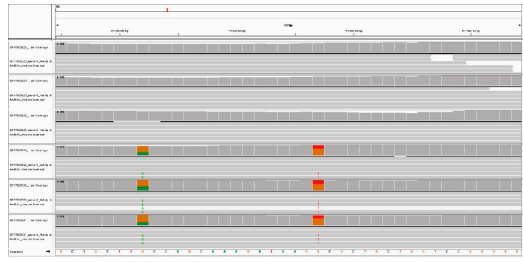
chr6B\_149055389,chr6B\_149055391



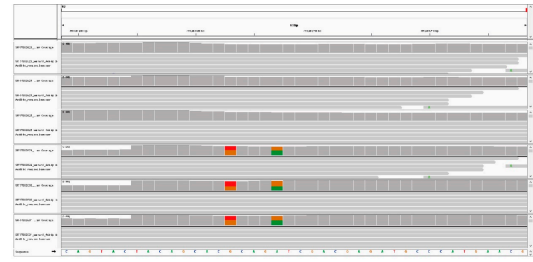
chr6B\_149055802

**Figure S11. IGV results of 16 RDD sites of TraesCS6B02G079200, TraesCS6B02G110300 and TraesCS6B02G148000.**

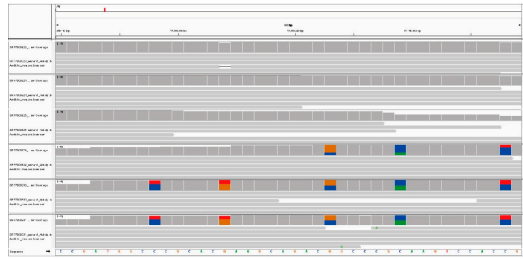




chr6B\_171728092,chr6B\_171728107



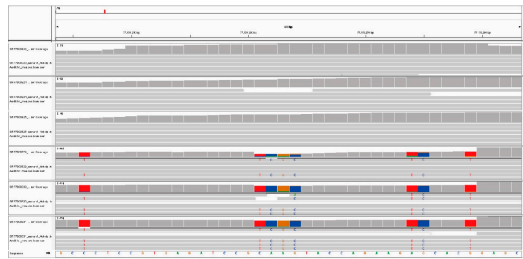
chr6D\_470684693,chr6D\_470684697



chr7A\_77150114,chr7A\_77150123,chr7A\_77150129,  
chr7A\_77150138



chr7A\_77150219,chr7A\_77150227,chr7A\_77150237



chr7A\_77150263



chr7A\_77150321,chr7A\_77150327,chr7A\_77150330,  
chr7A\_77150343,chr7A\_77150345,chr7A\_77150348



chr7A\_77150474

**Figure S12. IGV results of 19 RDD sites of TraesCS6B02G164600, TraesCS6D02G401900 and TraesCS7A02G119700.**