

## **Effects of G-quadruplex-binding plant secondary metabolites on c-MYC expression**

Roman G. Zenkov <sup>1\*</sup>, Kirill I. Kirsanov<sup>1,2</sup>, Anna M. Ogloblina<sup>1</sup>, Olga A. Vlasova<sup>1</sup>, Denis S. Naberezhnov<sup>1</sup>, Natalia Y. Karpechenko<sup>1,3</sup>, Timur I. Fetisov<sup>1</sup>, Ekaterina A. Lesovaya<sup>1,4</sup>, Gennady A. Belitsky<sup>1</sup>, Nina G. Dolinnaya<sup>5</sup>, Marianna G. Yakubovskaya<sup>1</sup>

<sup>1</sup> N. N. Blokhin Russian Cancer Research Center, 24 Kashirskoe shosse, Moscow 115478, Russia;

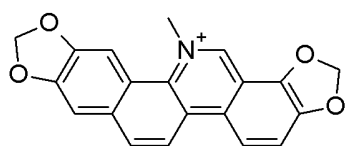
<sup>2</sup> RUDN University, 6 Miklukho-Maklaya St., Moscow 117198, Russia

<sup>3</sup> Department of Medicinal Chemistry and Toxicology, Pirogov Russian National Research Medical University, 1 Ostrovityanova st., Moscow 117997, Russia

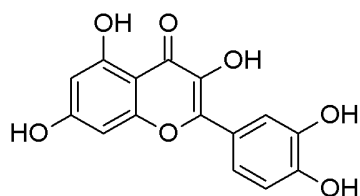
<sup>4</sup> I.P. Pavlov Ryazan State Medical University, 9 Vysokovolt'naya st., Ryazan 390026, Russia

<sup>5</sup> Department of Chemistry, Lomonosov Moscow State University, Leninskie Gory 1, 119991 Moscow, Russia

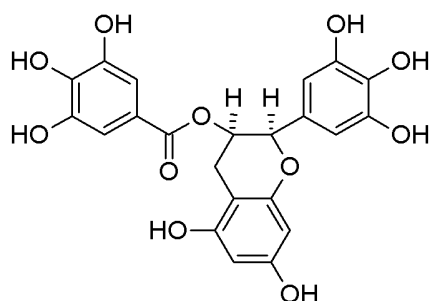
\*e-mail: r-zenkov@mail.ru



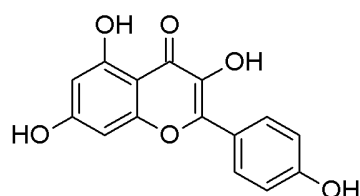
Sanguinarine



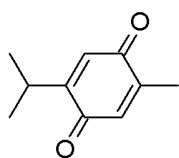
Quercetin



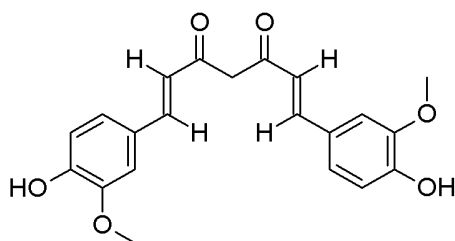
EGCG



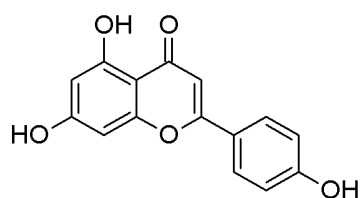
Kaempferol



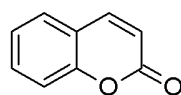
Thymoquinone



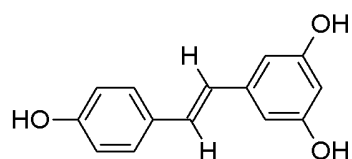
Curcumin



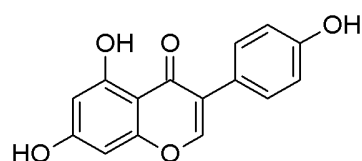
Apigenin



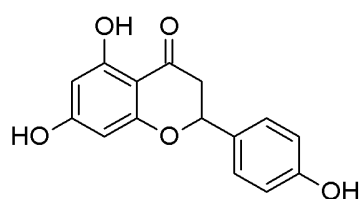
Coumarin



Resveratrol



Genistein



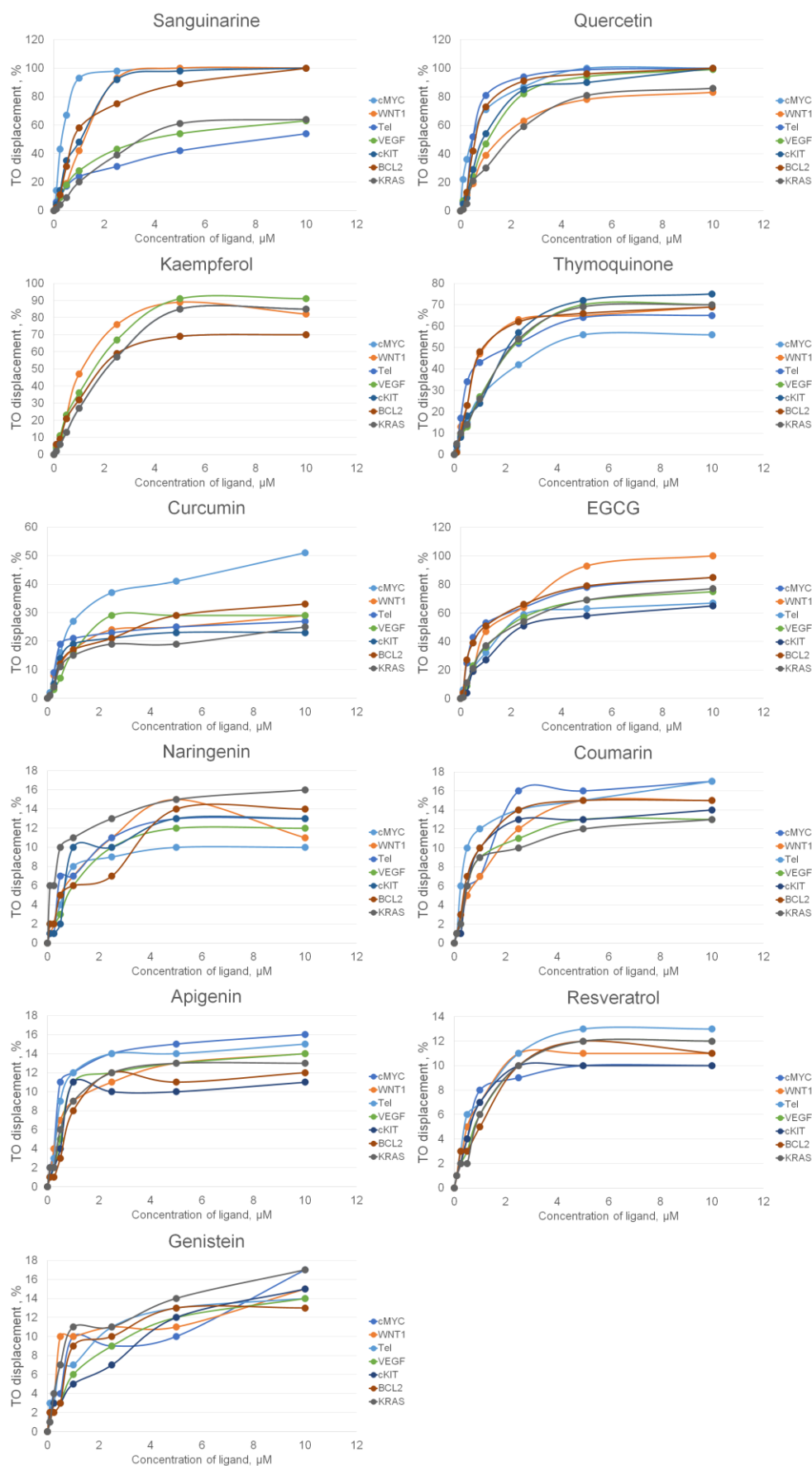
Naringenin

**Figure S1.** Structural formulae of plant secondary metabolites.

**Table S1.** IC<sub>50</sub>, IC<sub>20</sub> and applied nontoxic concentrations of PSMs in cancer and immortalized cell lines,  $\mu$ M.

Polyphenol	Cell viability	Cell line			
		HeLa	HT1080	NKE-hTERT	HaCaT
Sanguinarine	Applied concentrations	0.16	0.16	0.16	0.16
	IC <sub>20</sub>	0.54 $\pm$ 0.09	0.32 $\pm$ 0.04	0.73 $\pm$ 0.06	0.54 $\pm$ 0.05
	IC <sub>50</sub>	1.19 $\pm$ 0.08	0.69 $\pm$ 0.04	2.33 $\pm$ 0.19	1.50 $\pm$ 0.16
Quercetin	Applied concentrations	8	8	8	8
	IC <sub>20</sub>	23 $\pm$ 12	19 $\pm$ 1	31 $\pm$ 5	56 $\pm$ 3
	IC <sub>50</sub>	47 $\pm$ 16	108 $\pm$ 6	109 $\pm$ 4	355 $\pm$ 76
Kaempferol	Applied concentrations	4	4	32	4
	IC <sub>20</sub>	14 $\pm$ 1	11 $\pm$ 1	98 $\pm$ 8	13 $\pm$ 2
	IC <sub>50</sub>	73 $\pm$ 20	61 $\pm$ 1	382 $\pm$ 8	54 $\pm$ 3
Thymoquinone	Applied concentrations	14	14	14	3.5
	IC <sub>20</sub>	22 $\pm$ 1	20 $\pm$ 1	19 $\pm$ 1	9 $\pm$ 1
	IC <sub>50</sub>	38 $\pm$ 18	35 $\pm$ 13	61 $\pm$ 3	47 $\pm$ 3

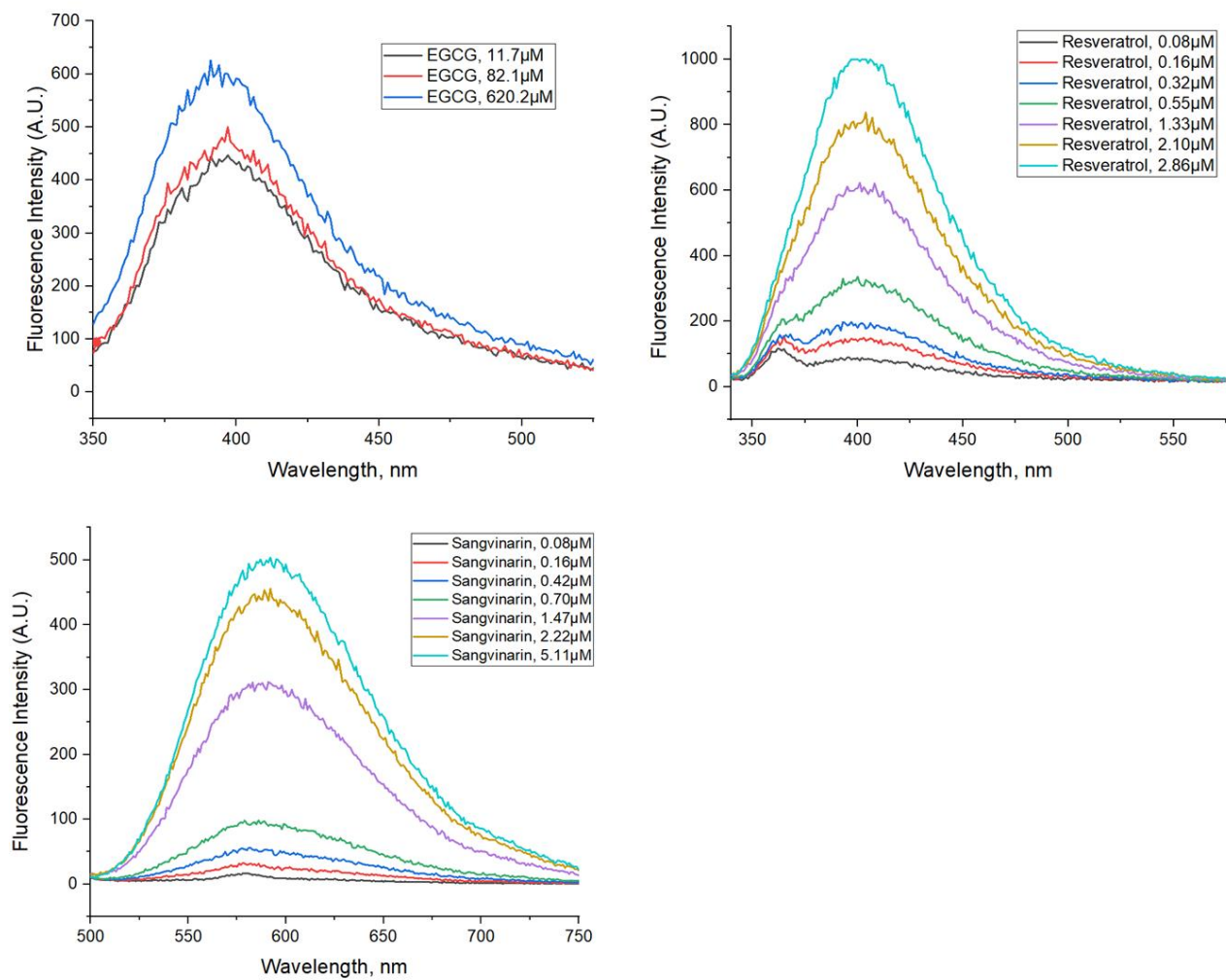
**Figure S2.** Thiazole orange displacement from G4s by PSMs. Fluorescence intensity-concentration curves of all compounds.



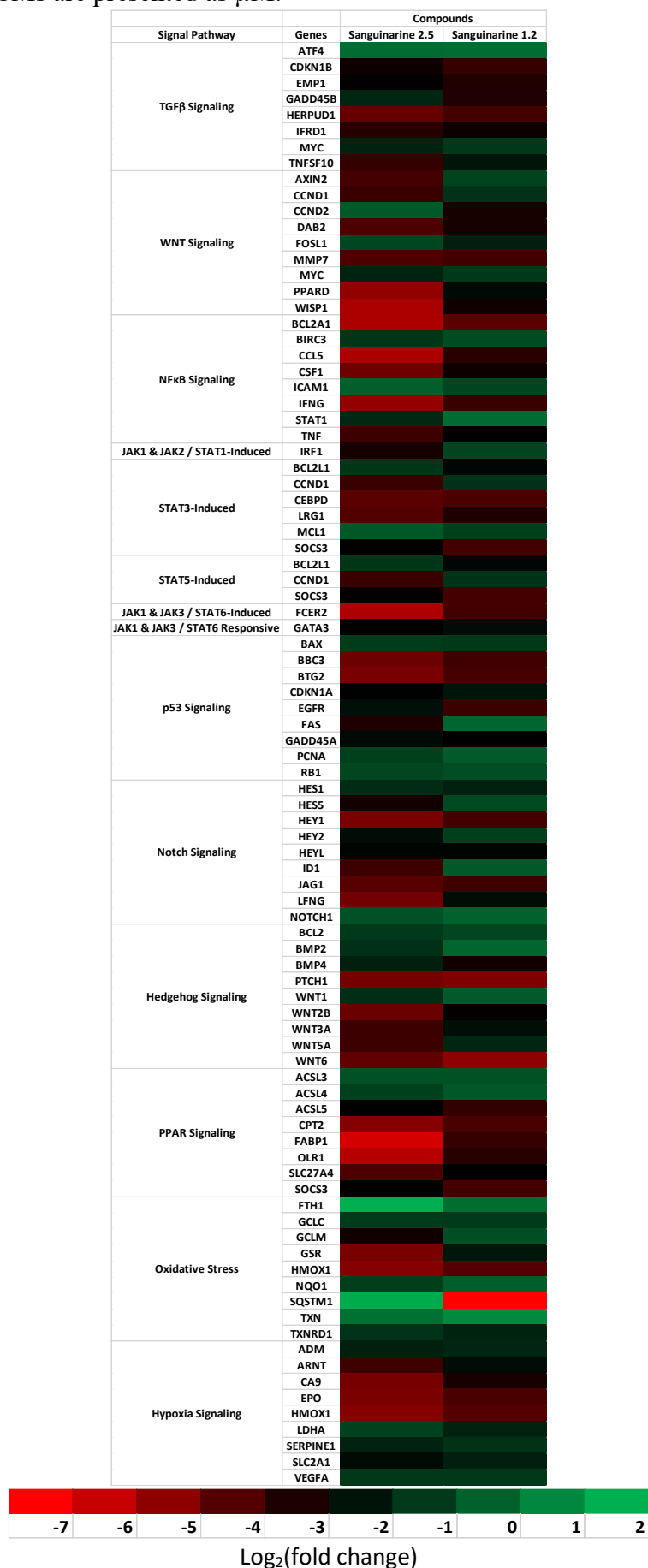
**Table S2.** Fluorescence data of the PSMs.

Polyphenol	Excitation	Emission	Laser voltage	Influence on the fluorescence of thiazole orange	Fluorescence
EGCG	328 nm	391 nm	900 v	No influence	Low level
Resveratrol	319 nm	400 nm	900 v	No influence	High level
Sanguinarine	480 nm	600 nm	900 v	No influence	High level
Thymoquinone	-	-	-		None
Kaempferol	-	-	-		None
Genistein	-	-	-		None
Quercetin	-	-	-		None
Naringenin	-	-	-		None
Apigenin	-	-	-		None
Coumarin	-	-	-		None
Curcumin	-	-	-		None

**Figure S3.** Fluorescence spectra of the PSMs.



**Table S3.** Sanguinarine-induced expression changes in a set of target genes of signal pathways. Concentrations of PSMs are presented as  $\mu\text{M}$ .



**Figure S4.** CD spectra of c-MYC G4 ( $\sim 4 \mu\text{M}$  oligonucleotide strand concentration) supplemented with 2 equivalent of kaempferol (A) or thymoquinone (B) and 1 equivalent of dsDNA. The measurements were carried out at room temperatures in buffer B.

