

Figure S1. Representative images of PAS staining (upper panel) and immunostaining for γ H2AX (bottom panel) of Pkd1RC/RC/Atm+/- mice kidneys showing dose response to cisplatin (0.1 mg/kg to 7.0 mg/kg) at 72 hours post injection. Scale bar = 50 μ m.

Figure S2. Morphological staining (PAS) of Pkd1RC/RC/Atm+/- mice kidney sections at 3 weeks post cisplatin injections (1 mg/kg or 7 mg/kg) or vehicle. Scale bar = 1mm.

Figure S3. Immunohistochemical staining for F4/80 in Pkd1RC/RC/Atm+/- mice kidney sections at 3 weeks post cisplatin injections (1 mg/kg or 7 mg/kg) or vehicle (7 mg/kg). Scale bar = 1mm.

Figure S4. Sirius red staining indicating fibrosis (pink) in Pkd1RC/RC/Atm+/- mice kidney sections at 3 weeks post cisplatin injections (1 mg/kg or 7 mg/kg) or vehicle (7 mg/kg). Scale bar = 200 μ m.

Figure S5. Immunostaining for α SMA in Pkd1RC/RC/Atm+/- mice kidney sections at 3 weeks post cisplatin injections (1 mg/kg or 7 mg/kg) or vehicle (7 mg/kg). Scale bar = 1mm.

Figure S1

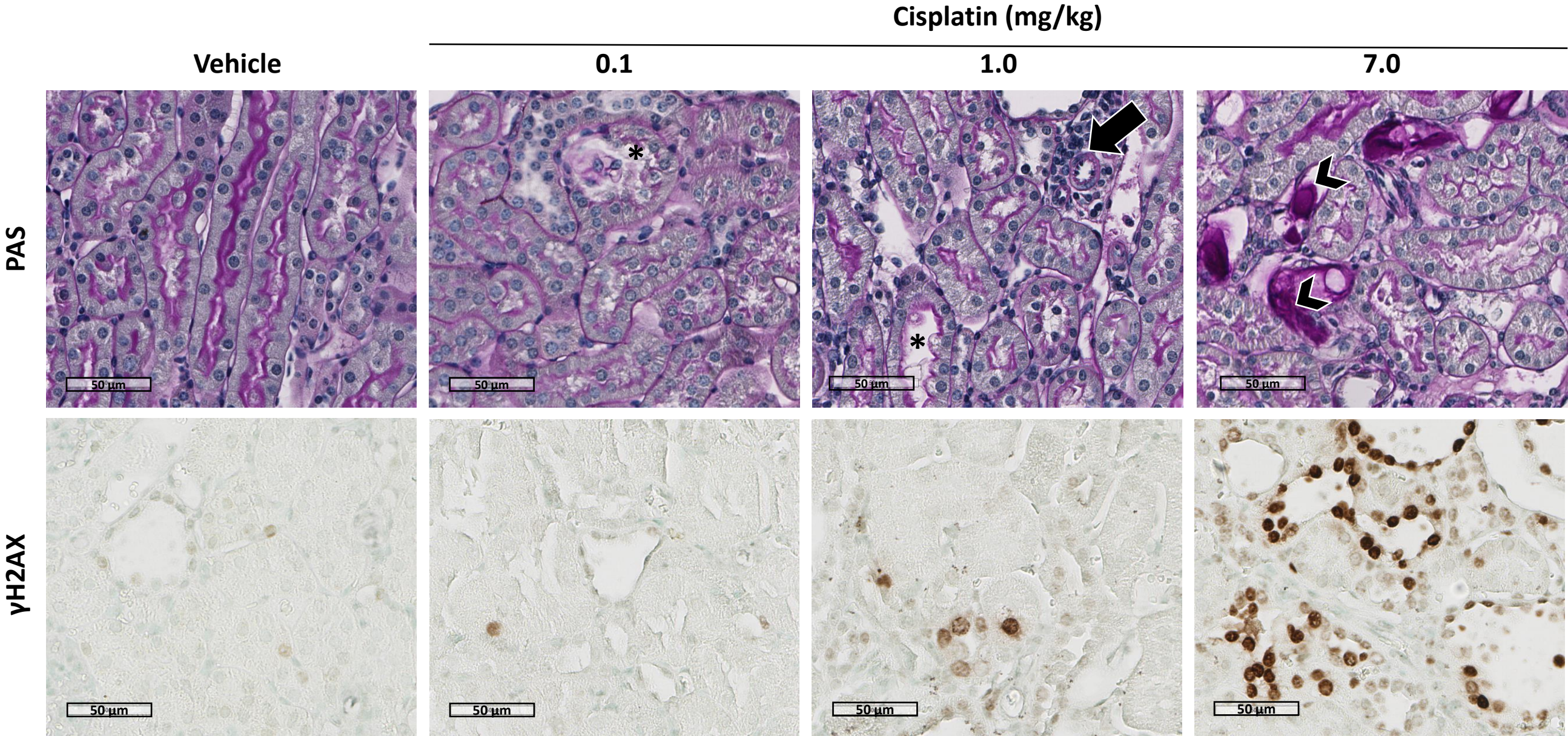


Figure S2

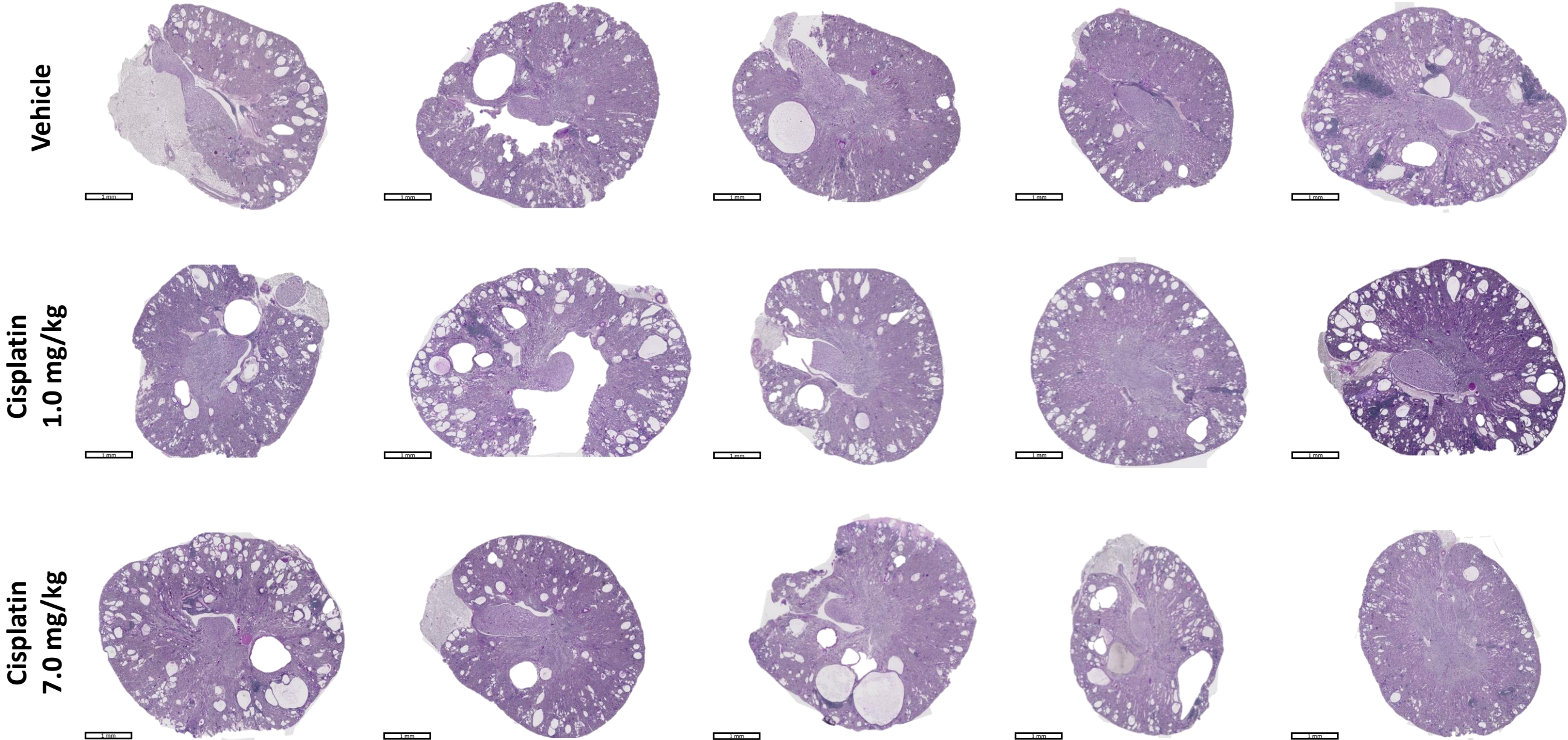


Figure S3

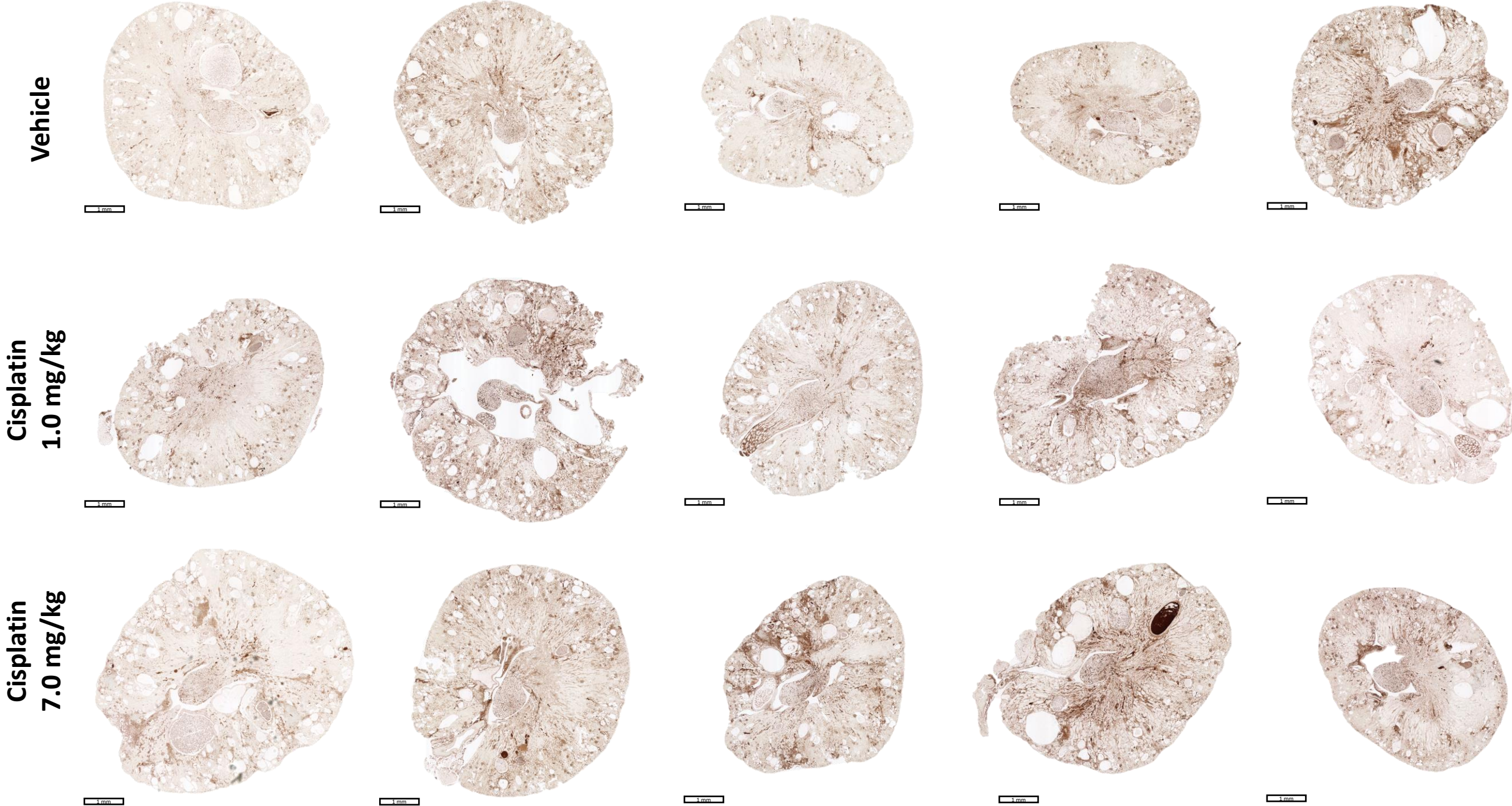
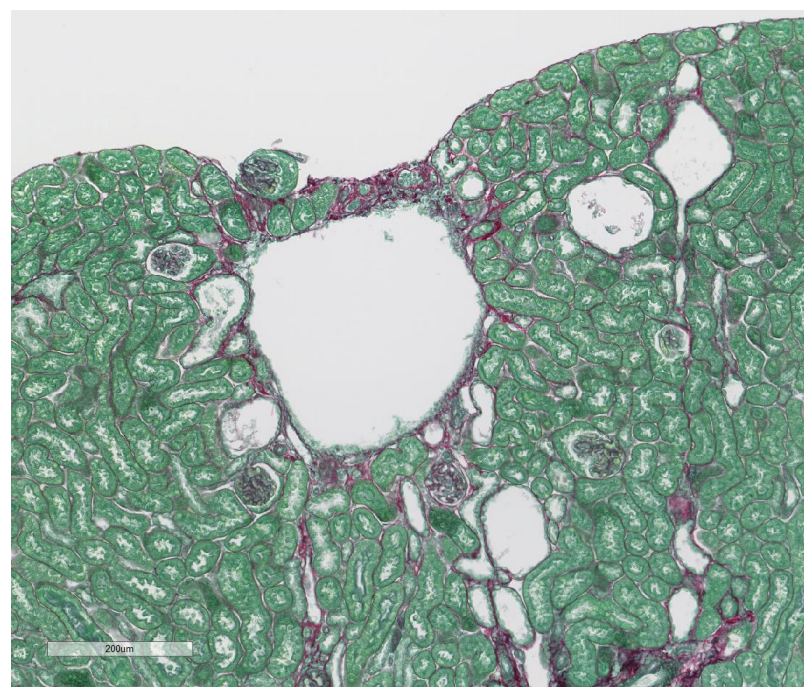
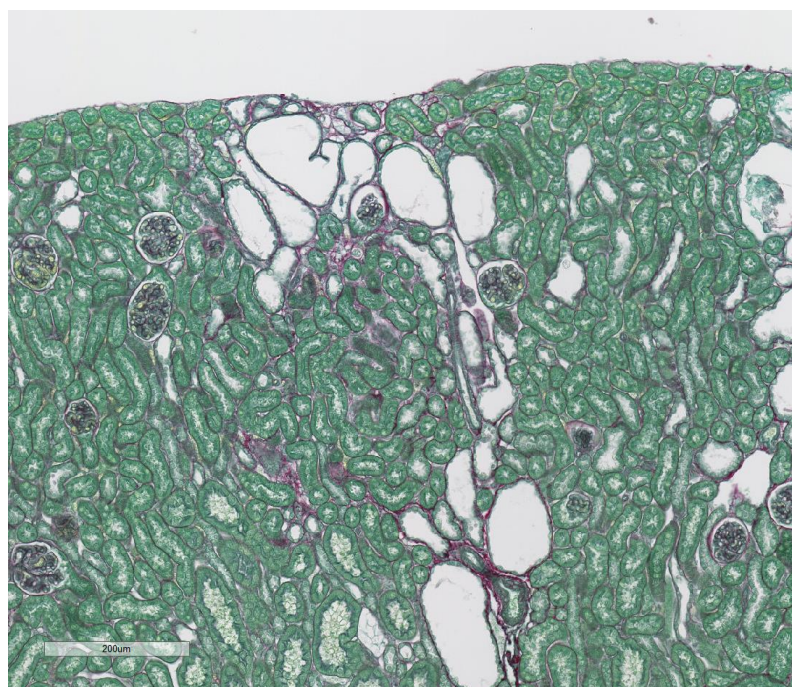


Figure S4

Vehicle



**Cisplatin
1.0 mg/kg**



**Cisplatin
7.0 mg/kg**

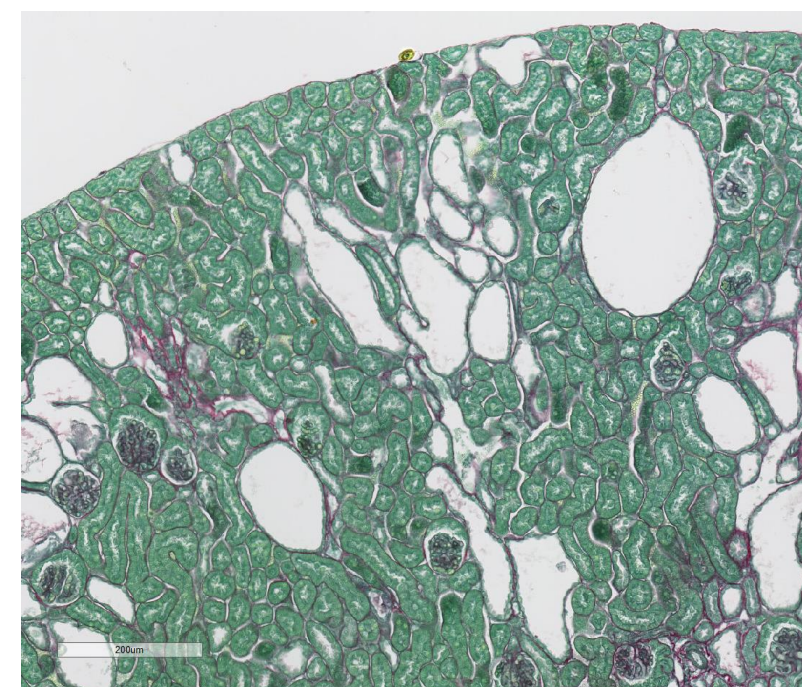


Figure S5

