

qRT-PCR analysis of transcript levels

Table S1. The primer sequences of miRNAs and gene for qPCR analysis.

Gene name	Primer sequence
novel-miR137	CATTACTGCTGGAGCTTT
novel-miR76	GAGGATTACAATGGATTTTGT
novel-miR37	TTGATTGCGGTCTTCAAGAAG
csi-miR3954	TGGACAGAGAAATCACGGTCA
novel-miR101	TTTACTTGCAAAAGAGGAACTC
Dlo_010737.1	F: AGAAAGTGGATGGAAAGGC R: TGTAGCGAGTGAAAGTGGTTAG
Dlo_009577.1	F: TAGTGGAAGTGGCGAGTCTC R: ATACCAAATGGCGATGCC
Dlo_027647.1	F: CGAGGATAACTTGATTCCCTG R: GACTTAGATGTCCACGCTCAG
Dlo_034106.1	F: TGCTTCCCTTGGCAAAGT R: AGGTTCAAGATGTGGGCAA
Dlo_016181.1	F: CAGGGAGAGAATAGATGAGCA R: GGGAGATACAACATTGAGCG
Dlo_025646.1	F: GACTATGGTATGTCCGTGTCAA R: CATCTTTGTTTCGCAGCCA
Dlo_000175.1	F: TGGCTTATGAGATTGGAAGG R: AGGGACCTGGTTTAGAGGAT
Dlo_018643.1	F: GGTGGTGGGAAGAGTTATCG R: TCGCCAAACAAAGCAACC
Dlo_018664.1	F: ACCACACAAGGAGATGGCA R: ACTGTTGAGGAGCACACCT
Dlo_033804.1	F: CGAGTCTCTCACCATTCACTG R: TCCGAACAACCTCATAGTCA
Dlo_029015.2	F: TTCATCCAGTTTGAGCCAG R: TCTACGGGTAAACATCAGGTTC
Dlo_027146.1	F: TGTCACCGAATACCACCTATG R: TGCTGGAGGATTTAGATGC
Dlo_015219.1	F: CACAAATCTGATGGTGAGACC R: CAGCAGTTAGAGACGCTCCT
JH-miR137-RT	GTCGTATCCAGTGCAGGGTCCGAGGTAT TCGCACTGGATACGACAAAGCT
JH-miR137	F: AGACGATGCATTACTGCTGGA R: CAGTGCAGGGTCCGAGGT

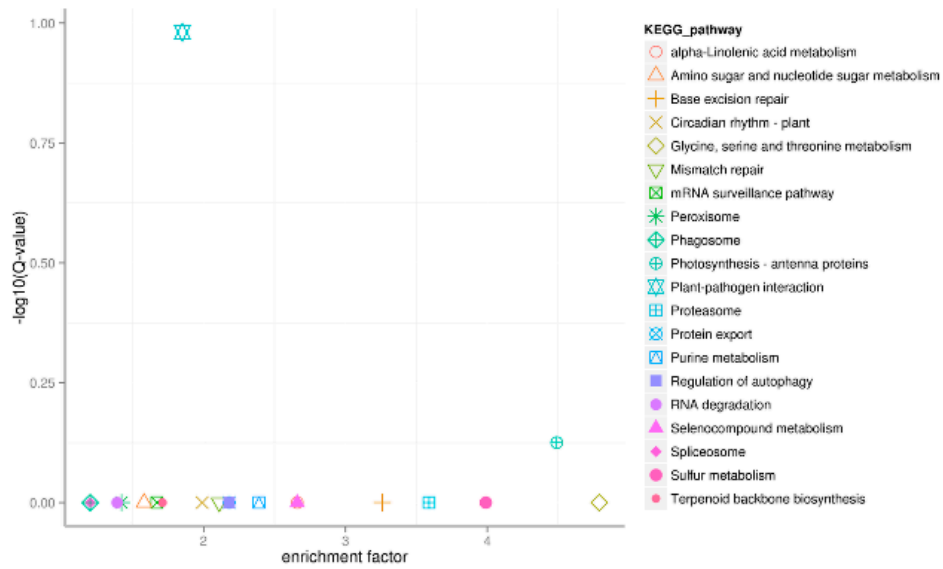


Figure S1. Differential expression miRNA target gene KEGG pathway enrichment scatter plot.

Recombinant vector construction and verification

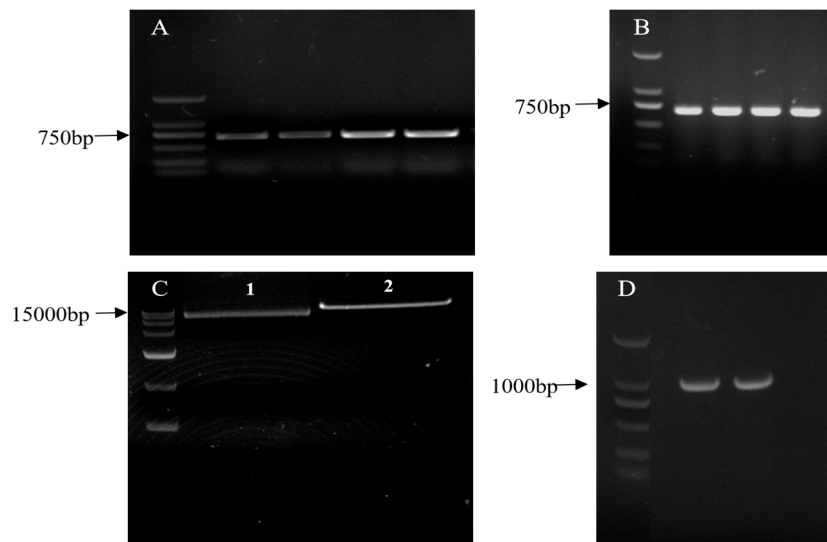


Figure S2. PCR validation of *E. coli* containing pSAK277-MIR137. (A-B) The amplified fragments were cloned into the pMD-18-T vector. (C) The pSAK277 vector was digested using restriction enzymes, which contained EcoR I and Hind III restriction sites, respectively. (D) The results of agarose gel electrophoresis indicated that the recombinant vector was successfully constructed.

Identification of transgenic *Arabidopsis thaliana*

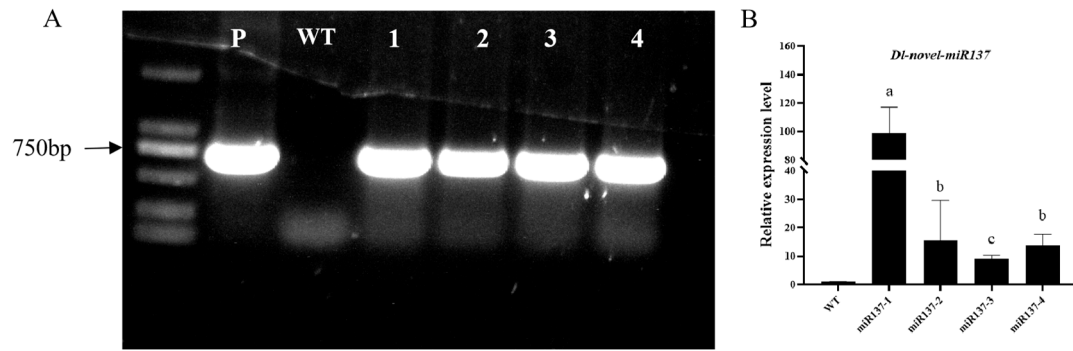


Figure S3. PCR analysis of MIR137-transgenic *Arabidopsis thaliana*. (A) PCR analysis of MIR137-transgenic *Arabidopsis thaliana*; P, pSAK277-MIR137; WT, Wild type plant; 1~4, MIR137-transgenic plant; (B) Expression analysis of Dl-novel-miR137 in transgenic *Arabidopsis*. Error bars show SE of the mean. Letter on the columns not the same means significantly different at ($P < 0.05$).