

# Biocompatible Gas Plasma Treatment Affects Secretion Profiles but Not Osteogenic Differentiation in Patient-Derived Mesenchymal Stromal Cells

Maximilian Fischer <sup>1</sup>, Janosch Schoon <sup>1,\*</sup>, Eric Freund <sup>2,3</sup>, Lea Miebach <sup>2,3</sup>, Klaus-Dieter Weltmann <sup>2</sup>, Sander Bekeschus <sup>2\*,†</sup> and Georgi I. Wassilew <sup>1,†</sup>

<sup>1</sup> Center for Orthopaedics, Trauma Surgery and Rehabilitation Medicine, University Medicine Greifswald, 17475 Greifswald, Germany; maximilian.fischer@med.uni-greifswald.de (M.F.); georgi.wassilew@med.uni-greifswald.de (G.I.W.)

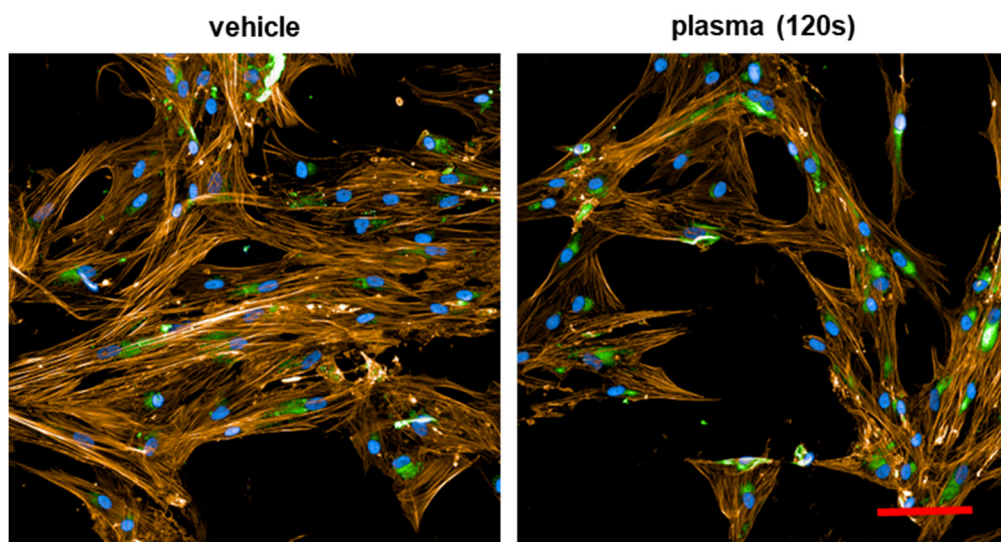
<sup>2</sup> ZIK *plasmatis*, Leibniz Institute for Plasma Science and Technology (INP), Felix-Hausdorff-Str. 2, 17489 Greifswald, Germany; eric.freund@inp-greifswald.de (E.F.); lea.miebach@inp-greifswald.de (L.M.); weltmann@inp-greifswald.de (K.-D.W.)

<sup>3</sup> Department of General, Visceral, Thorax, and Vascular Surgery, Greifswald University Medical Center, 17475 Greifswald, Germany

\* Correspondence: janosch.schoon@med.uni-greifswald.de (J.S.); sander.bekeschus@inp-greifswald.de (S.B.)

† These authors contributed equally as senior authors.

## Supplementary Material



**Figure S1.** Representative 3-channel fluorescence image of control (vehicle) and plasma-treated (120 s) cells. Scale bar: 100  $\mu$ m.