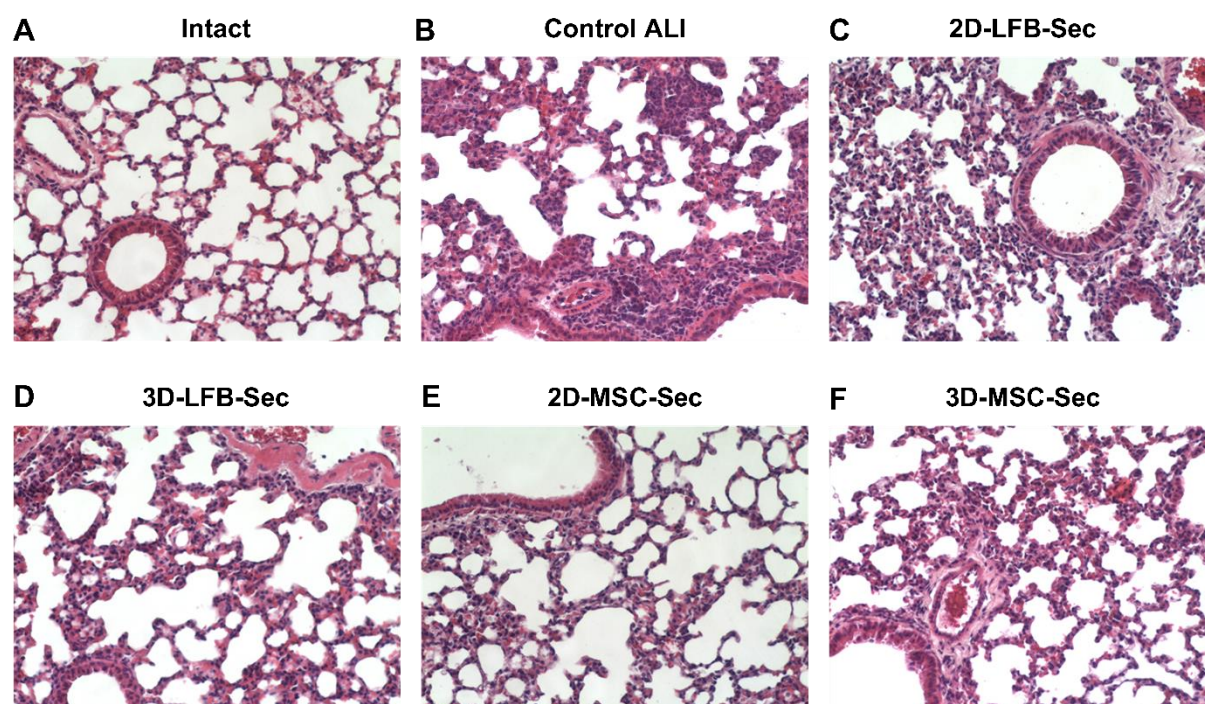


Supplementary Materials



**Figure S1.** Histology examination of the lungs. (A–F) Lung tissue structure in the control group and on day 8 of LPS-induced ALI, either in nontreated mice or after lyophilizate inhalation. Sections were stained with hematoxylin and eosin;  $\times 200$  magnification. LPS, lipopolysaccharide; ALI, acute lung injury; MSC, mesenchymal stromal cell; LFB, lung fibroblast.