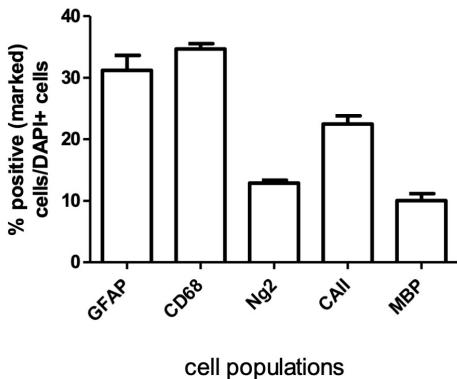
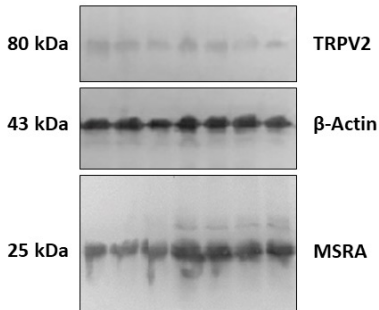


Supplementary Figure S1. Determination of glial populations in mixed glial secondary cell cultures in basal conditions and after pro-inflammatory LPS and anti-inflammatory IL-4 treatments.

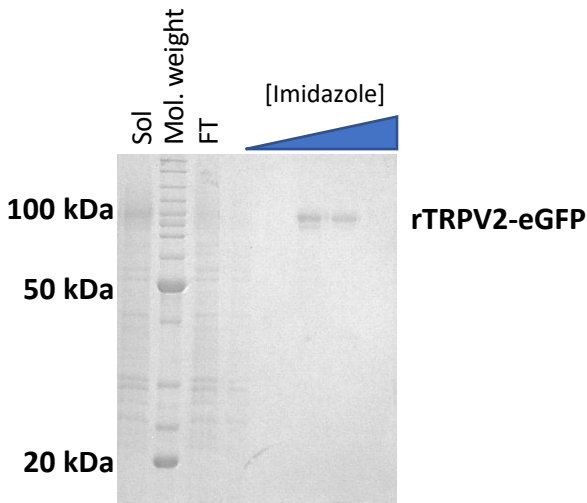


Supplementary Figure S2. . Characterization of mixed glial cultures under basal conditions.

Western Blot Quantification	Healthy (H)				Multiple Sclerosis (MS)					Unpaired t test (H vs MS)
	H1	H2	H3	MEAN	MS1	MS2	MS3	MS4	MEAN	
MSRA	0,878	0,873	1,016		1,277	1,344	1,246	1,290		
TRPV2	0,280	0,263	0,227		0,238	0,221	0,176	0,152		
Correction Factor (β -Actin)	1,027	1,063	0,946		1,067	1,026	1,008	0,863		
MSRA β -Actin-Normalized	0,856	0,821	1,074	0,917 \pm 0,137	1,196	1,309	1,236	1,495	1,309 \pm 0,133	*, p = 0,0124
TRPV2 β -Actin-Normalized	0,273	0,248	0,240	0,253 \pm 0,017	0,223	0,216	0,175	0,176	0,197 \pm 0,026	*, p = 0,0232



Supplementary Figure S3. Protein determination and data analysis of immunoblot in Figure 6C.



Supplementary Figure S4. Coomassie blue staining of Ni-NTA FL-TRPV2 enrichment and imidazole elution resolved in a 12% SDS-PAGE electrophoresis. Sol; detergent solubilized fraction loaded in the chromatography column. FT; Flow through fraction.