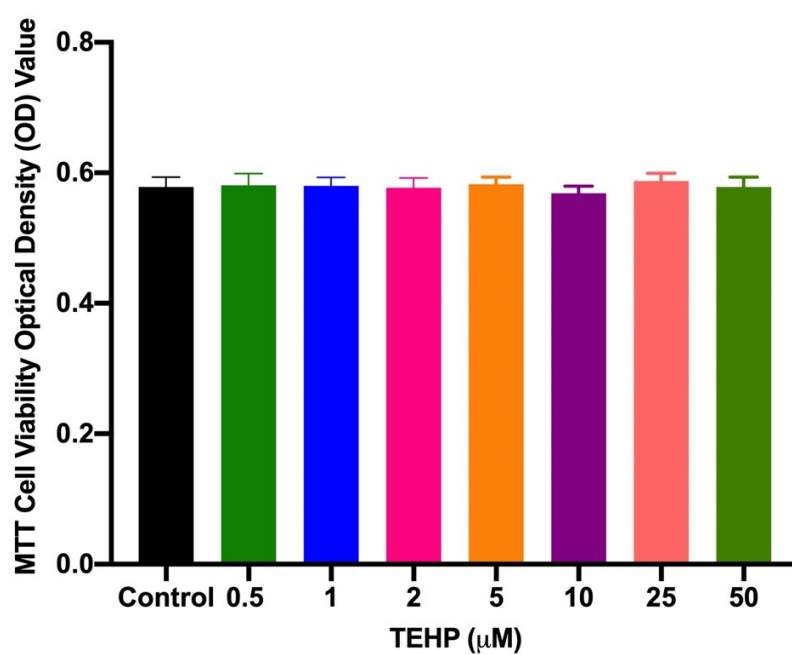
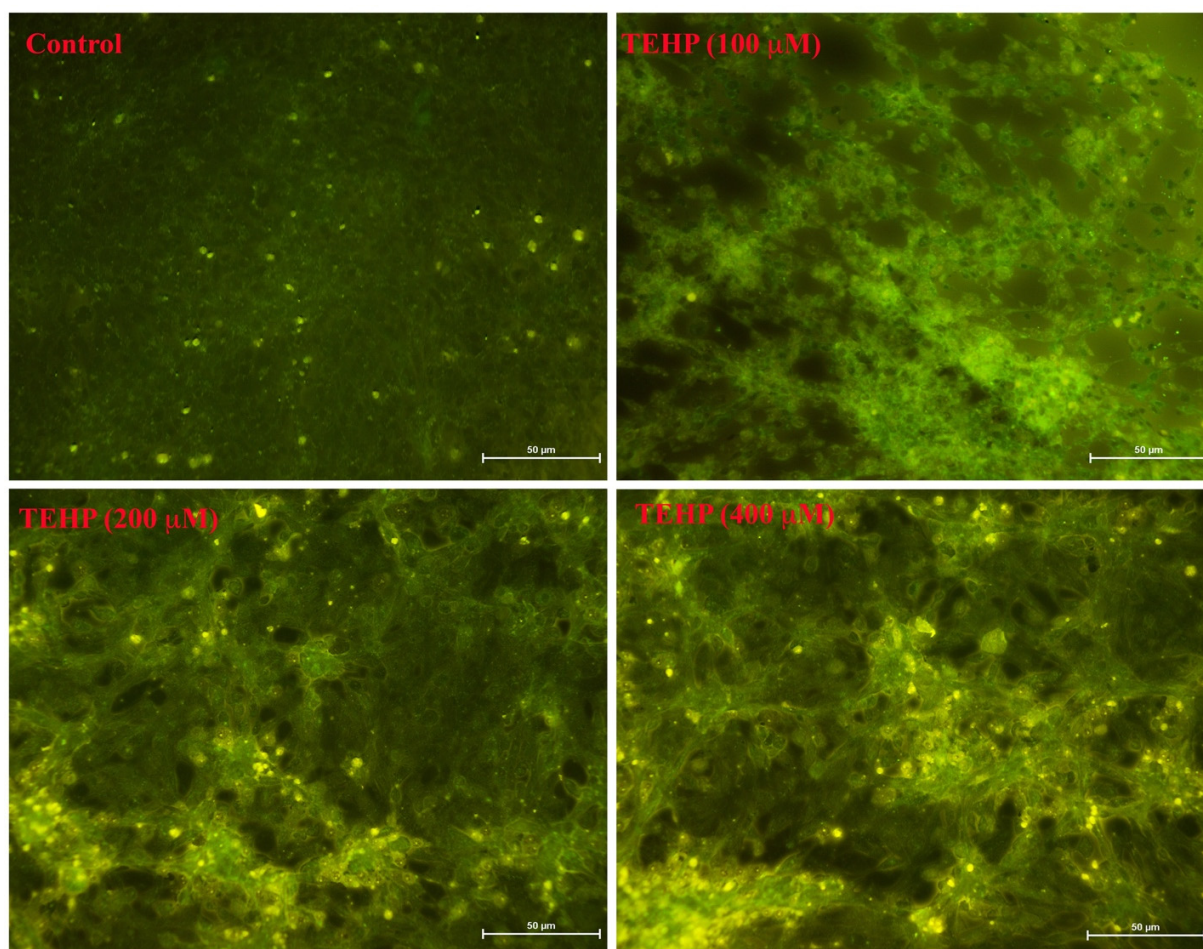


Supplementary Figure S1. Structural changes in HepG2 cells after 72h of exposure with at low concentrations of TEHP.



Supplementary Figure S2. Mitochondrial dehydrogenase-based cytotoxicity quantification in HepG2 cells after TEHP exposure for 72 h.



Supplementary Figure S3. Ca^{++} influx in HepG2 cells after TEHP (100-400 μM) treatment for 72h. Images were captured using a fluorescence microscope at 20X. Images depict an increase in the green fluorescence in TEHP treated cells stained with Fluo-3 (0.5 μM) for 1h. HepG2 cells were grown on 16-wells sterile cell-culture glass slide in a CO_2 incubator (5%, 95% humidity, 37 $^{\circ}\text{C}$).