

Supplementary Material

CD44 3'UTR region 1	<p>TTTTATTGGGAATTAAATACTTTTTTTCCTCACT miR-3174 CGAGACGUAGAGAUUGAGUGAU</p>
CD44 3'UTR region 2	<p>TGAAGTTTATGGAATAAGATGTATTCTCACTC miR-3174 CGAGACGUAGAGAUUGAGUGAU</p>
MDM2 3'UTR	<p>TGGAGTGCAGTGGCGTGATCTTGGCTCACT miR-3174 CGAGACGUAGAGAUUGAGUGAU</p>
CDK6 3'UTR	<p>CTTGGTTCACCCCTTACTCACTT miR-3174 CGAGACGUAGAGAUUGAGUGAU</p>
PLAU 3' UTR Region	<p>TATCCCTTCCTTTTAGCCTAGTTCATCCAATCCTCACTG miR-3174 CGAGACGUAGAGAUUGAGUGAU</p>
RHOA 3'UTR	<p>CCTTCAGCTCTACAGCTAATCAGCATTCTCACTC miR-3174 CGAGACGUAGAGAUUGAGUGAU</p>

Figure S1. The miR-3174 alignment to each target gene. The alignment is based on Target Scan (online) and our PAR-CLIP analysis (unpublished)

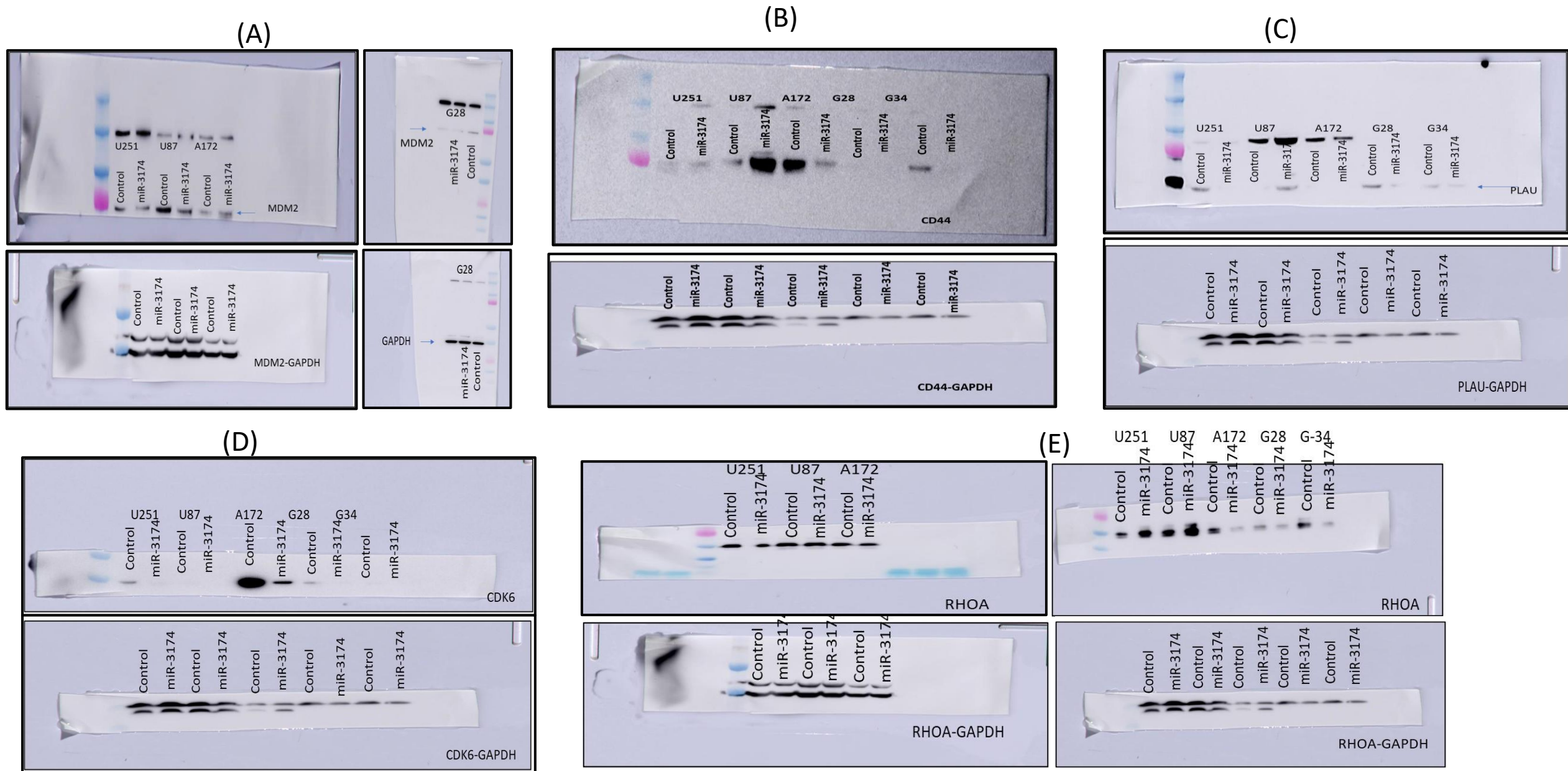


Figure S2. Representative raw immunoblots. (a) Immunoblot of MDM2 and associated GAPDH. (b) Immunoblot of CD44 and associated GAPDH. (c) Immunoblot of PLAU and associated GAPDH. (d) Immunoblot of CDK6 and associated GAPDH. (e) Immunoblot of RHOA and associated GAPDH. Cell lysates were collected from GBM cell lines and GSCs that were transiently transfected with either microRNA scrambled control (Control) or miR-3174.