

S1

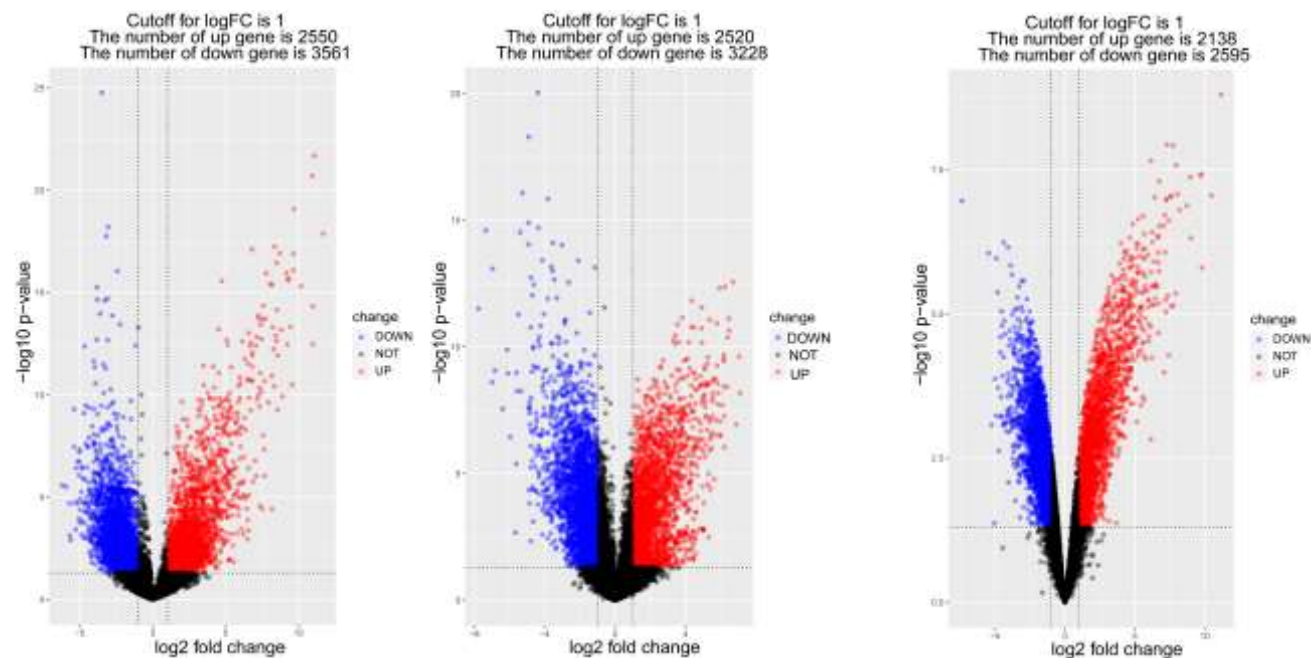
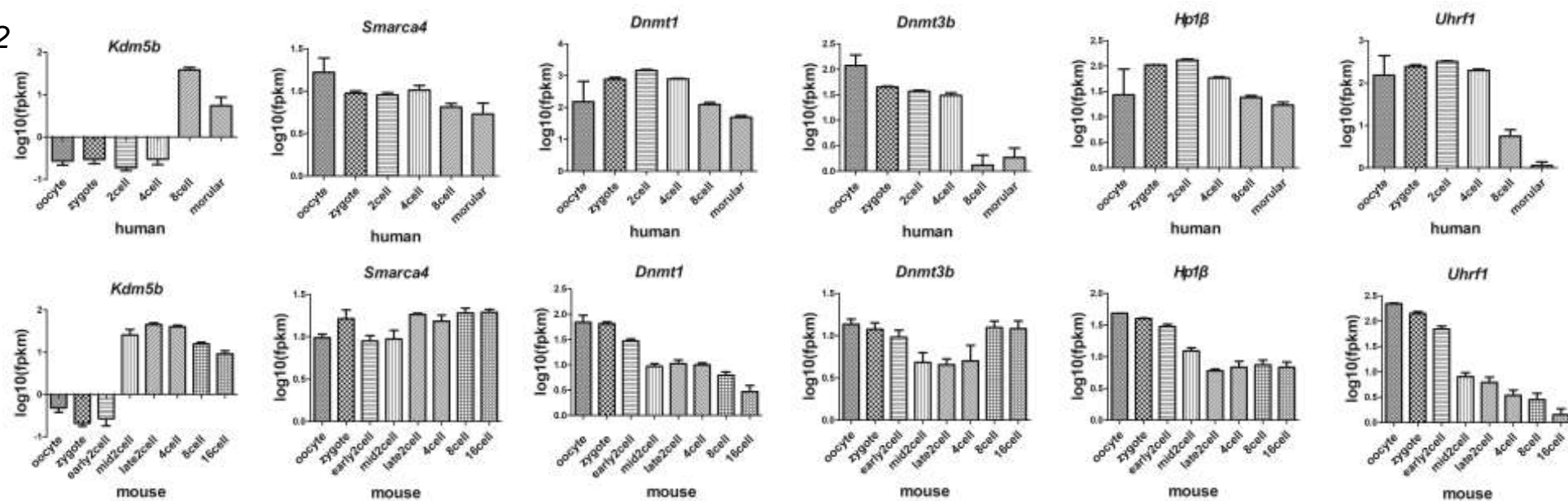


Figure S1. RNA-seq analysis of human, mouse and goat early embryos ( $p\text{-adj} < 0.05$   $|\log_2(\text{fold change})| \geq 1$ ).

S2



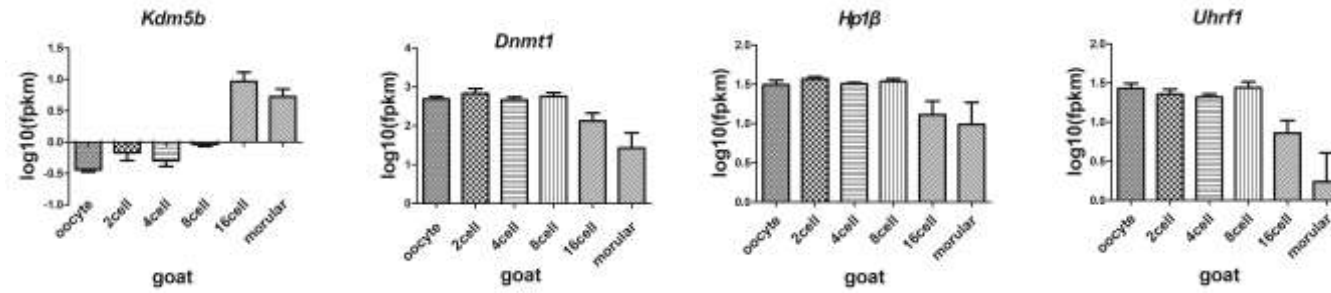
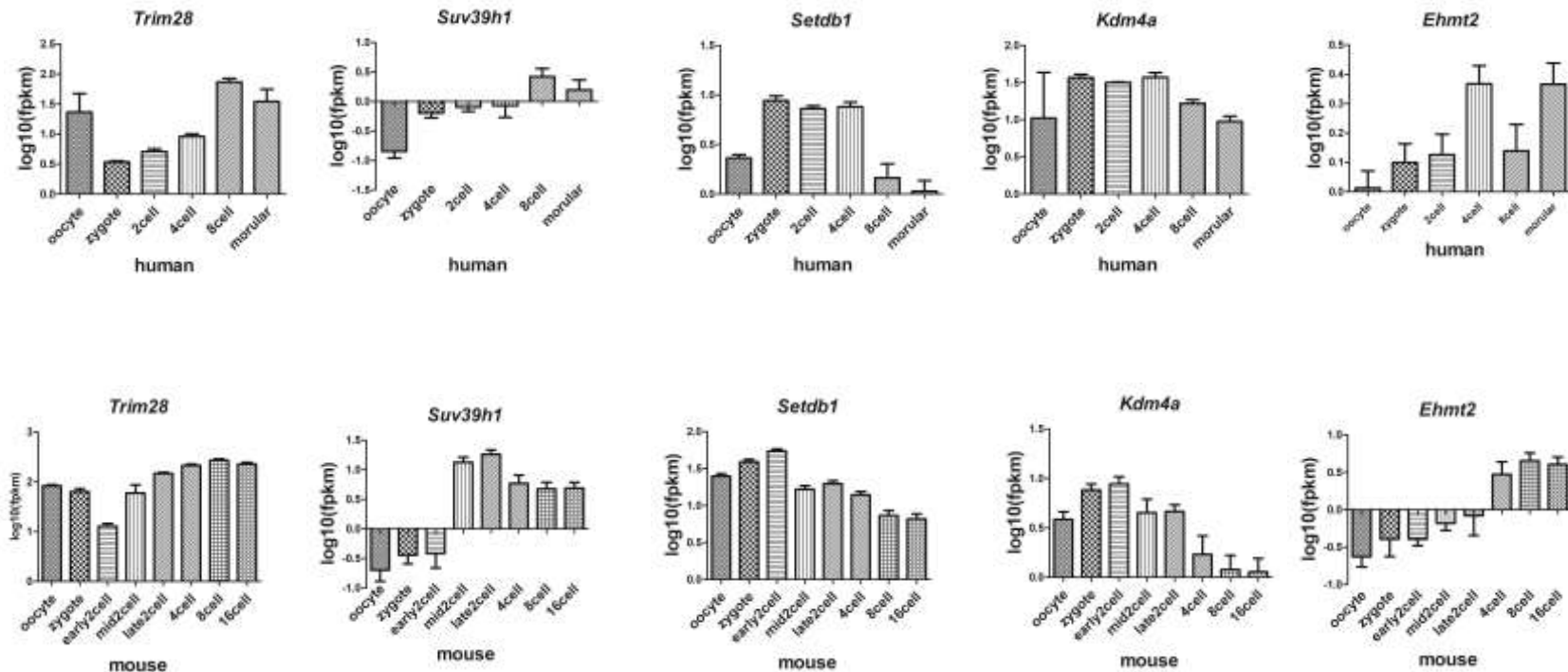


Figure S2. The expression of *Kdm5b*, *Smarca4*, *Dnmt1*, *Dnmt3b*, *Hp1β* and *Uhrf1* in human, mouse and goat embryos.

S3



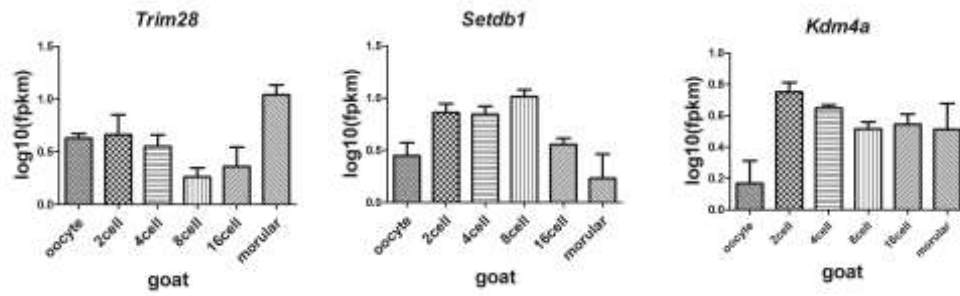


Figure S3. The expression of *Trim28*, *Suv39h1*, *Setdb1*, *Kdm4a* and *Ehmt2* in human, mouse and goat embryos.

S4

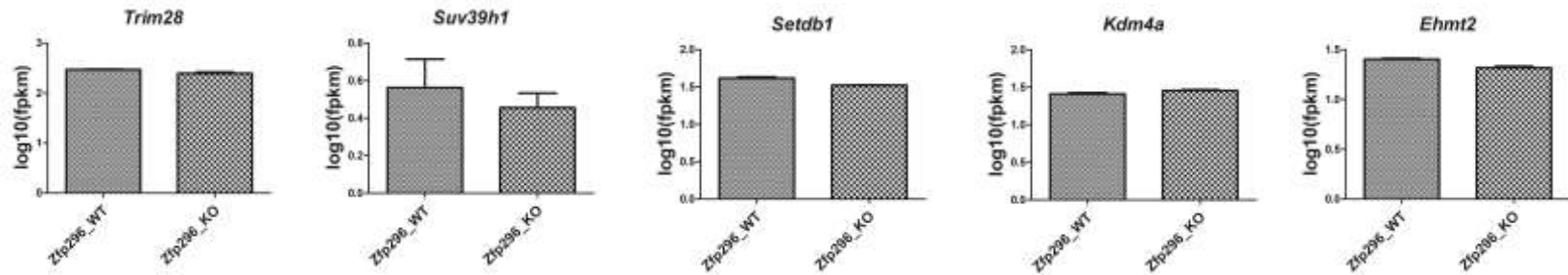
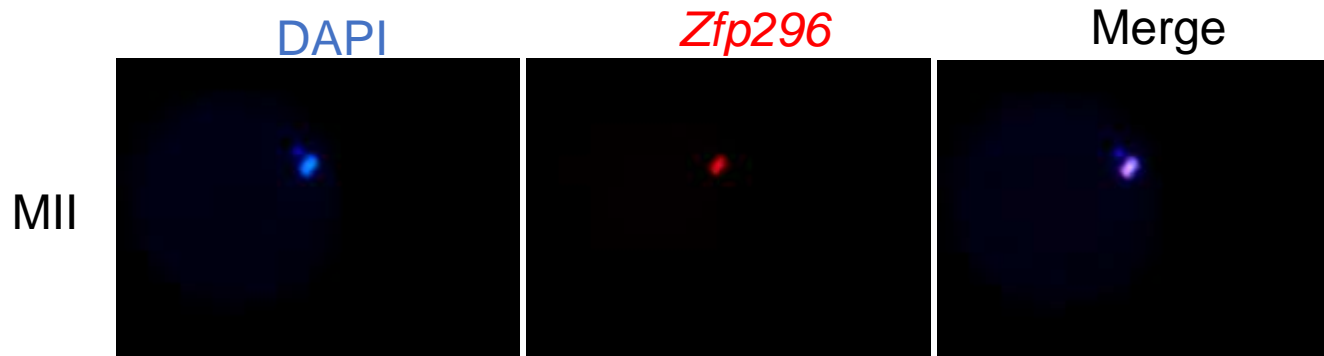


Figure S4. The expression of *Trim28*, *Suv39h1*, *Setdb1*, *Kdm4a* and *Ehmt2* in *Zfp296* KO ESCs.

S5



S5

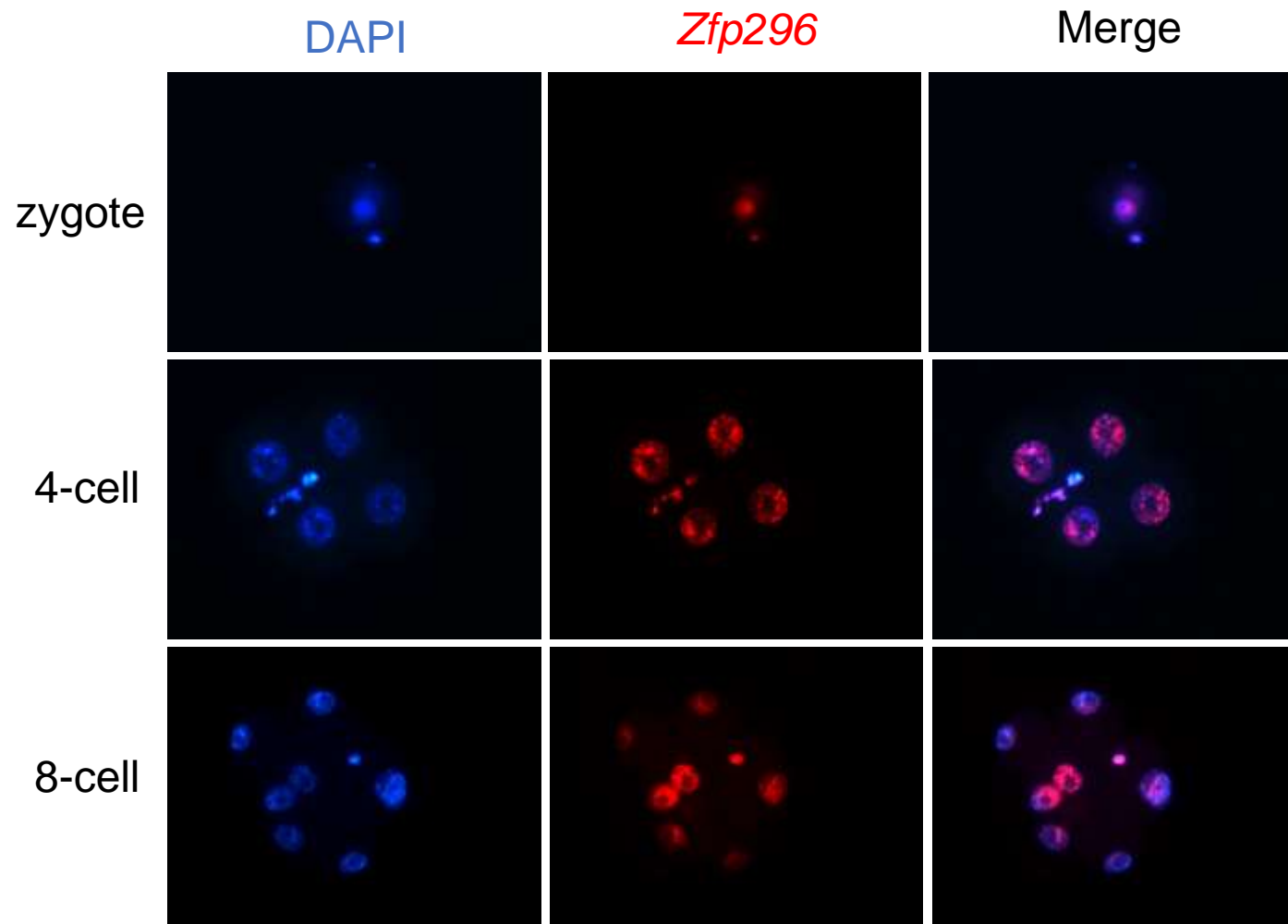


Figure S5. The distribution of *Zfp296* in MII and other stages of early embryos.