

SUPPLEMENTARY MATERIALS

Figure S1. TEM images with marked endo-vesicular PE N/MPL size.

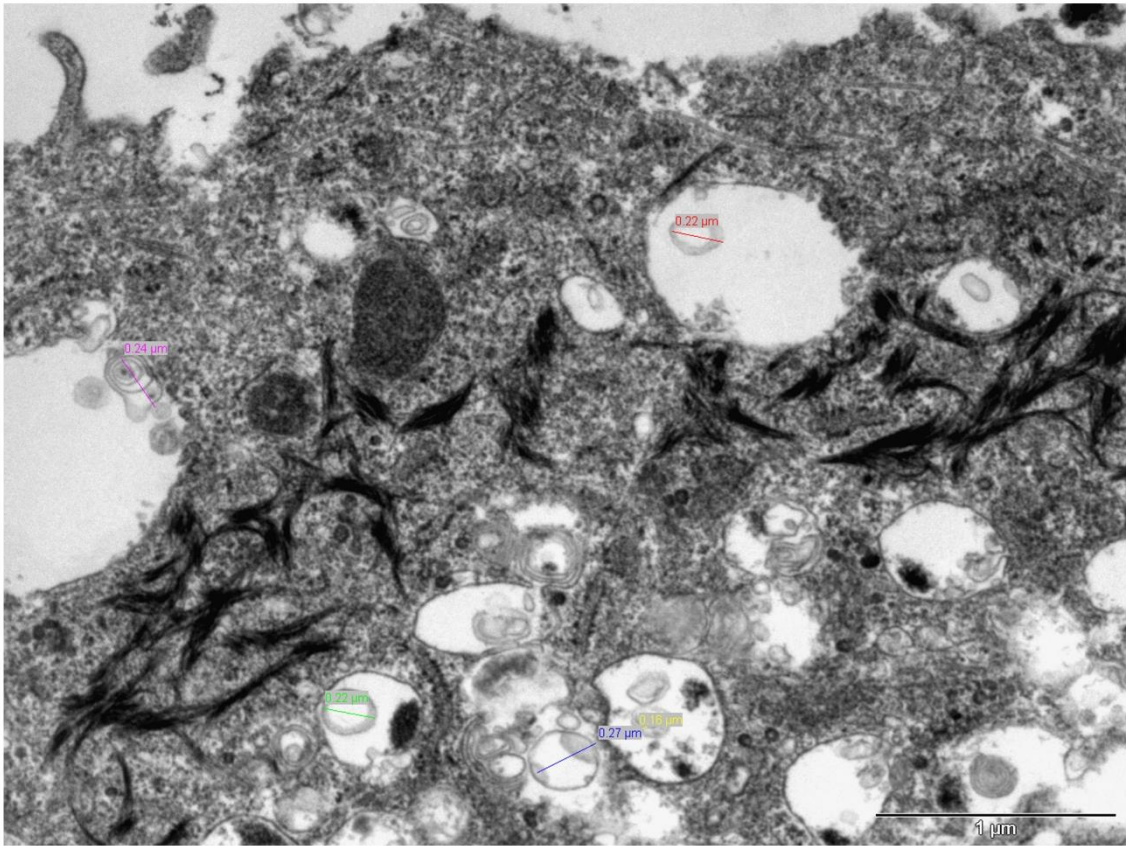


Table S1. Endovesicular PE N/MPL mean diameter calculation.

Pic 1	Pic 2	Pic 3	Pic 4	Pic 5
Distance	Distance	Distance	Distance	Distance
μm	μm	μm	μm	μm
0.18	0.12	0.12	0.22	0.22
0.15	0.22	0.13	0.22	0.25
0.26	0.19	0.15	0.16	0.15
0.26	0.17	0.13	0.27	0.17
0.11	0.16	0.21	0.24	0.14
0.14	0.17	0.15		0.22
0.13	0.24	0.30		
0.15		0.17		
0.17				
Single Pic Mean				
0.17	0.18	0.17	0.22	0.19
Tot Mean				

Distance				
μm	0.18			
nm	180			

Figure S2: Uncropped Western Blot images. (a) WB in Figure 1h. **(b)** WB in Figure 3c.
The protein standard used in Western Blot analyses was Precision Plus Dual Color BIO-RAD (#1610374)

