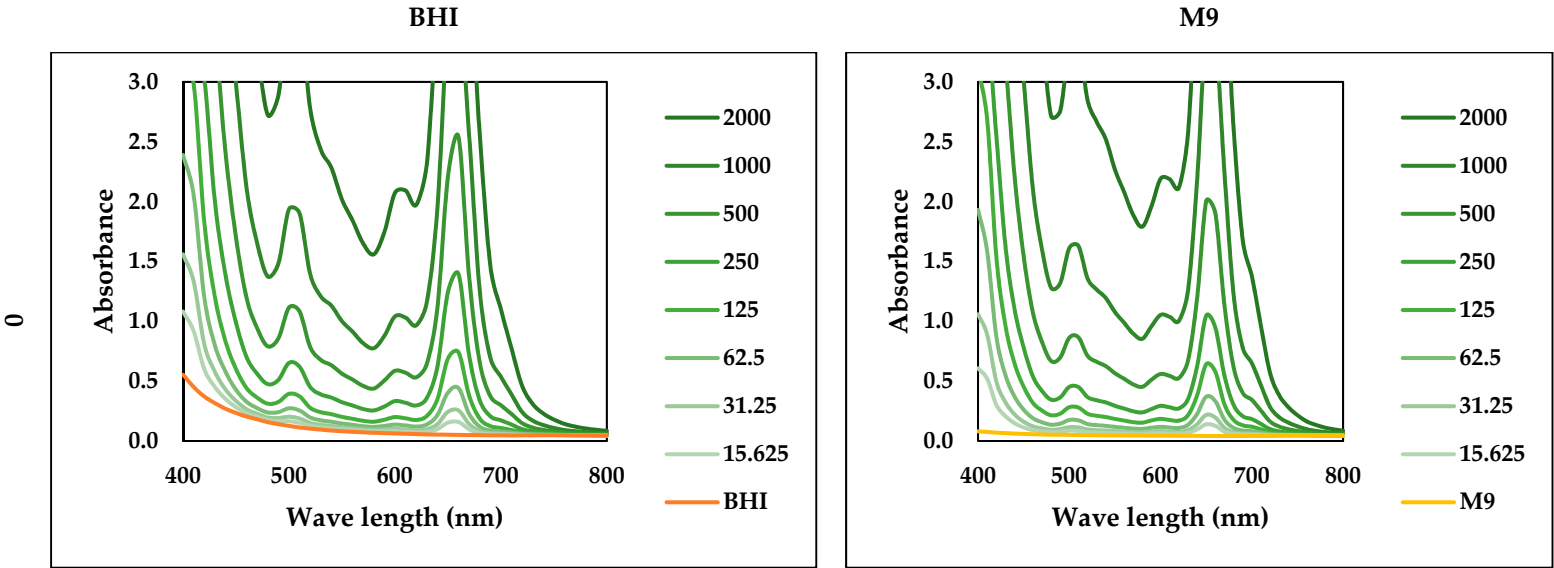
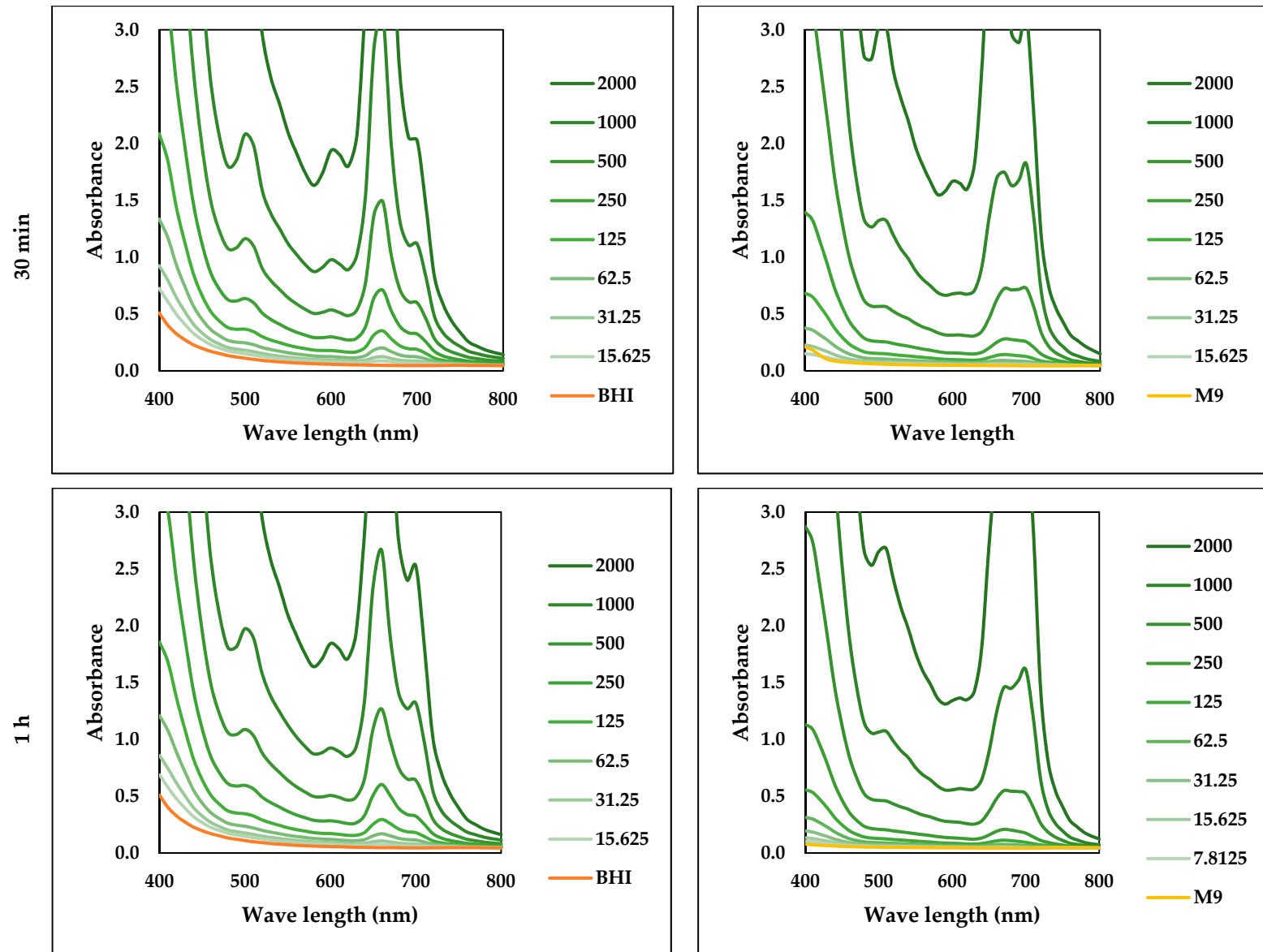
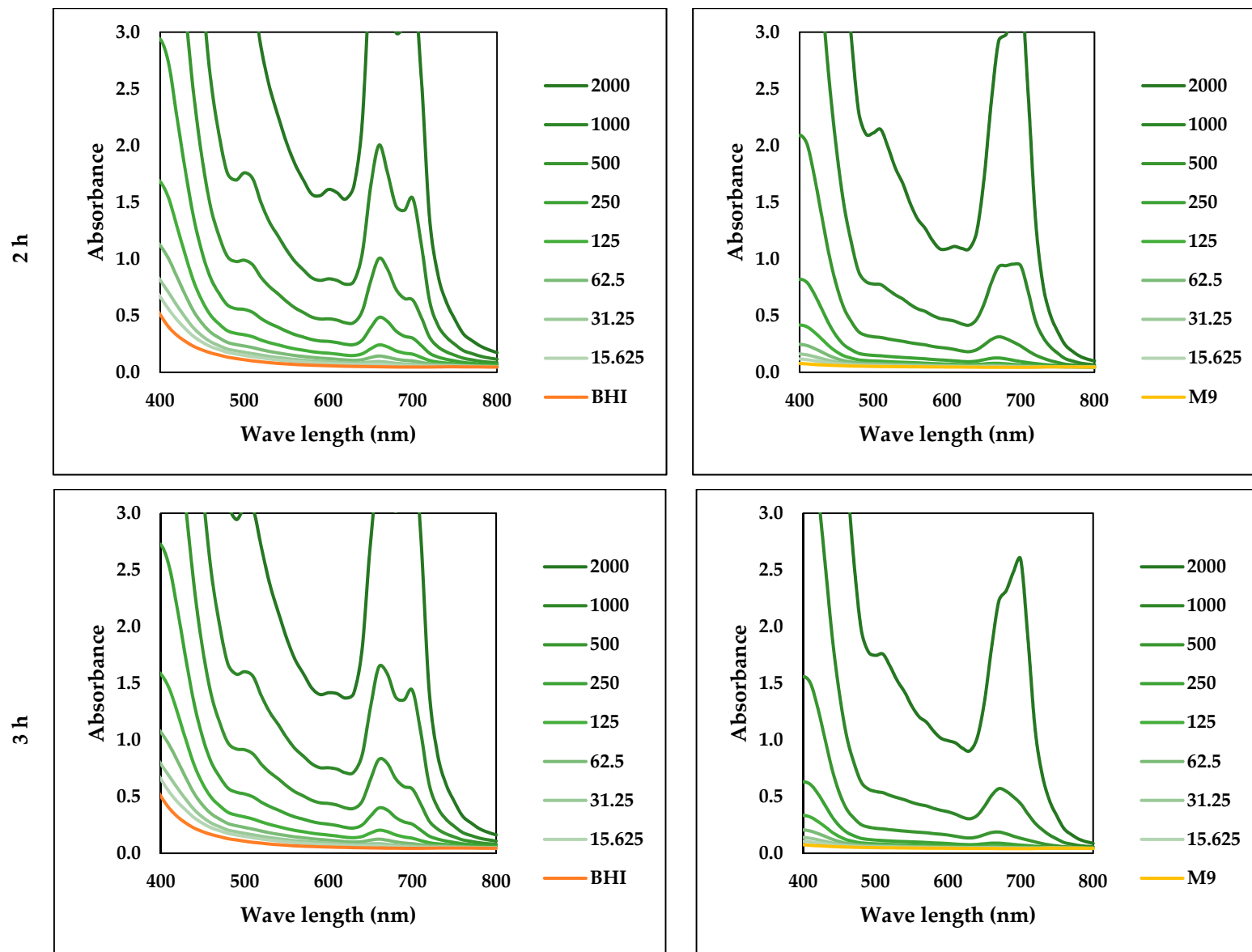
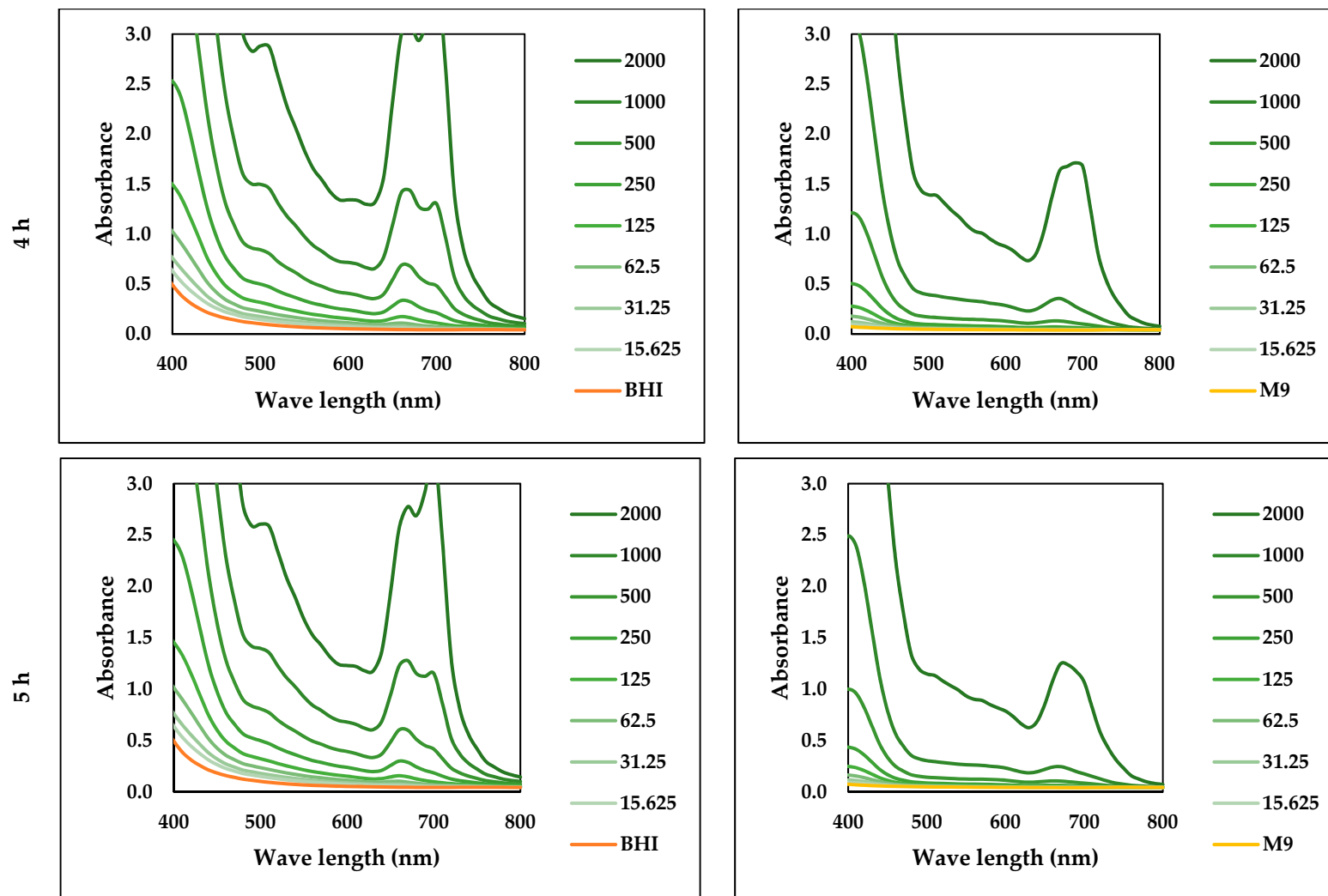


Supplementary material:









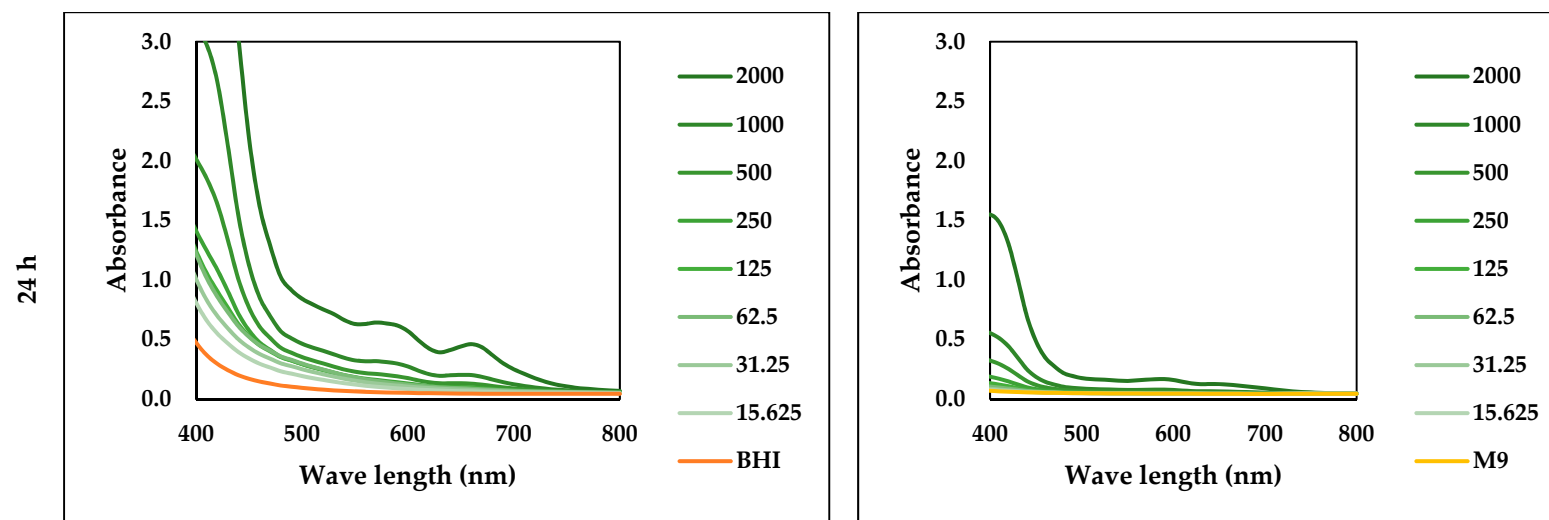


Figure S1: Absorption spectrum of different concentrations of chlorophyllin in BHI and M9 growth media during irradiation over the designated time points.

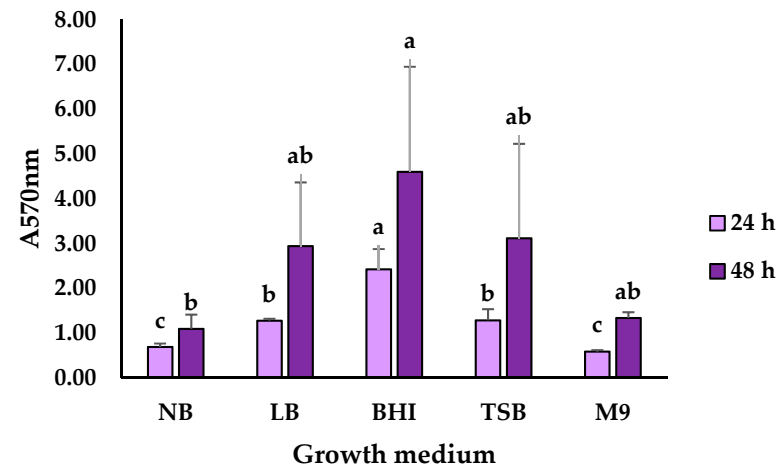


Figure S2: Influence of growth medium and incubation time on biofilm formation. The result is an average of four biological replicates. Error bars represent the standard deviation of the mean. Different letters refer to a significant difference ($p < 0.05$).

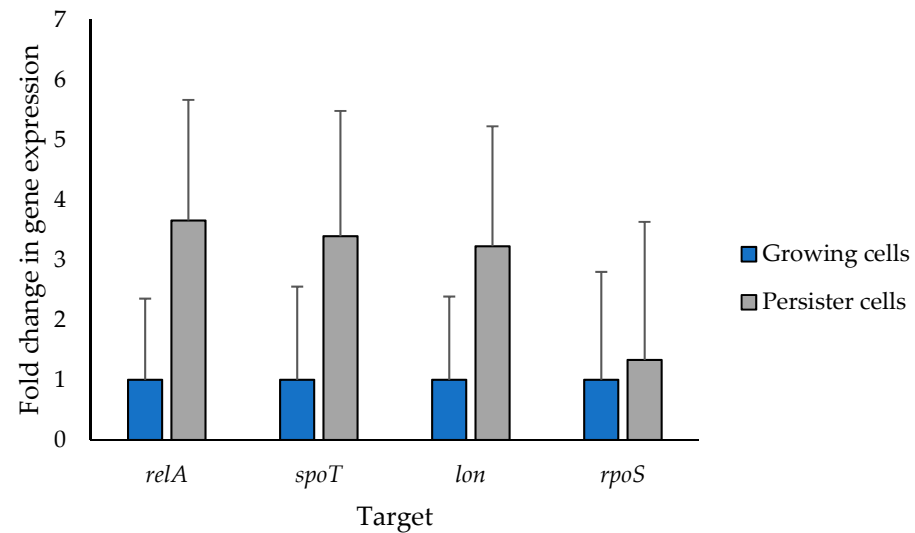


Figure S3: The relative fold change in gene expression of *P. aeruginosa* cells following treatment with SHX compared to control untreated samples using the method $2^{-\Delta C_q}$. Based on Cohen's d [1,2], the effect size of *relA*, *spoT*, *lon* and *rpoS* are 1.6, 1.3, 1.3 and 0.2, respectively. Small effect sizes ($d = 0.2$), medium ($d = 0.5$), and large ($d = 0.8$).

References

1. Lakens, D. Calculating and Reporting Effect Sizes to Facilitate Cumulative Science: A Practical Primer for t-Tests and ANOVAs. *Front. Psychol.* **2013**, *4*, 1–12, doi:10.3389/fpsyg.2013.00863.
2. Cohen, J. *Statistical Power Analysis for the Behavioral Sciences (2nd Edition)*; Hillsdale, NJ: Lawrence Erlbaum., 1988; ISBN 0805802835.