

Supplementary Figures

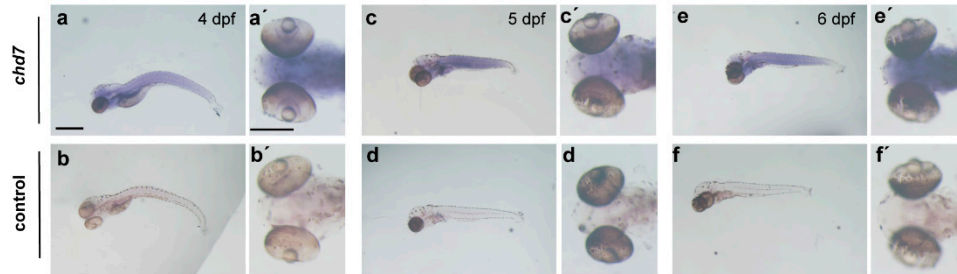


Fig. S1. The temporal and spatial expression pattern of *chd7* at 4-6 dpf.

a-f) Zebrafish at 4-6 dpf using WISH displayed high expression of *chd7* in the brain, eyes and spinal cord (lateral view). **a'-f')** Dorsal view of the brain. Scale bar in a-f, 10 μm ; Scale bar in a' -f', 5 μm .

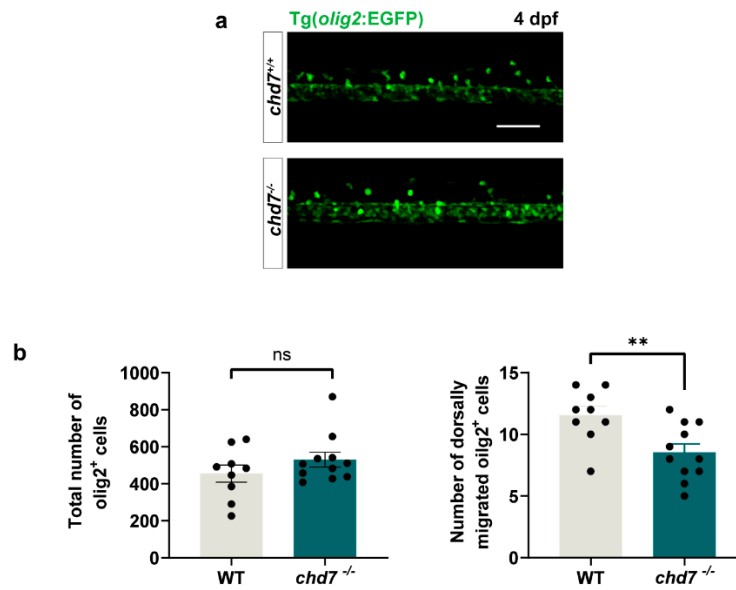


Fig. S2. Total number of OPCs were not significantly changed after *chd7* deletion.

a) Representative image of total and dorsally migrated olig2⁺ cells at 4 dpf between *chd7*^{+/+} and *chd7*^{-/-} group. Scale bar: 10 μ m. **b)** The number of total olig2⁺ cells at 4 dpf did not occur significantly difference between the two groups. **c)** The number of dorsally migrated olig2⁺ cells at 4 dpf decreased in *chd7*^{-/-} group. ** $p = 0.0075$, unpaired Student's two-tailed *t*-test.