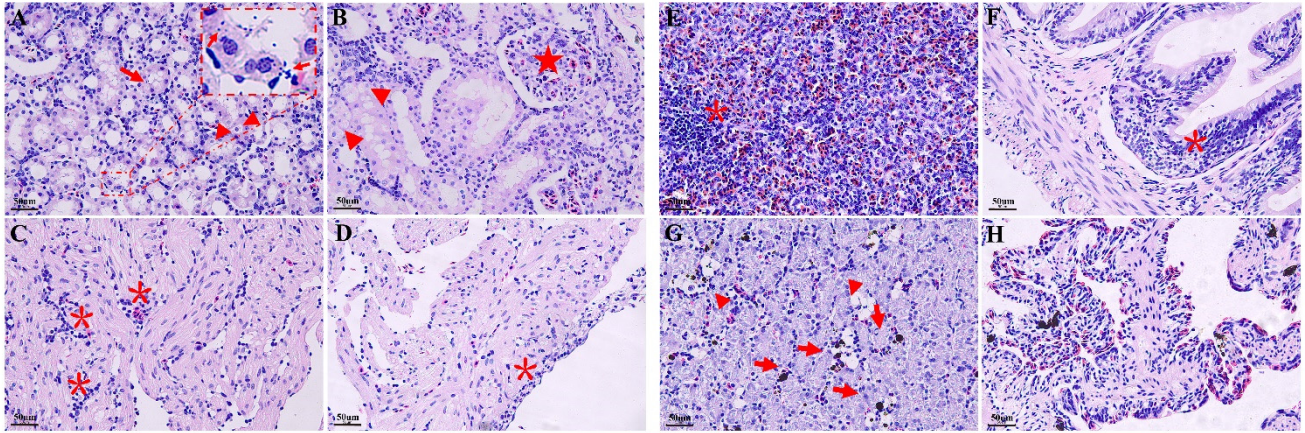


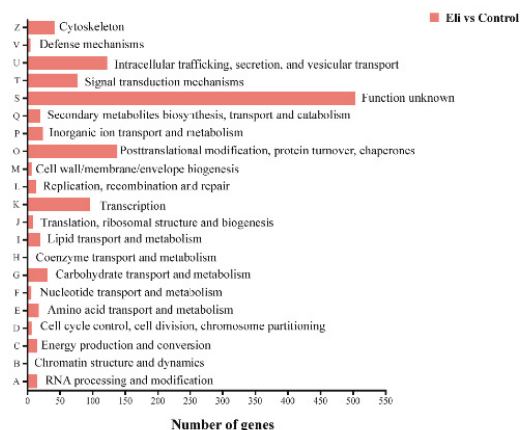
## Supplementary materials (Figures)



**Figure S1.** Histopathological changes in bullfrogs infected with *Elizabethkingia miricola*. **(A-B)** Enlarged and vacuolated renal tubular epithelial cells (no trailing arrow), some cell necrosis (trailing arrow), and dilated renal capsule lumen (pentagram). **(C-F)** Inflammatory cell infiltration in the heart, intestines and spleen (asterisks). **(G)** The liver shows more brown pigmentation (with trailing arrow) and vacuolar degeneration of hepatocytes (without trailing arrow). **(H)** Slight bruising in the alveolar microvasculature.

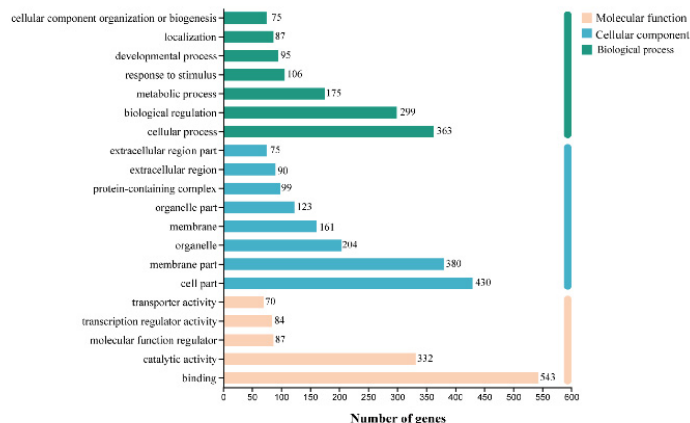
**A**

### COG classification

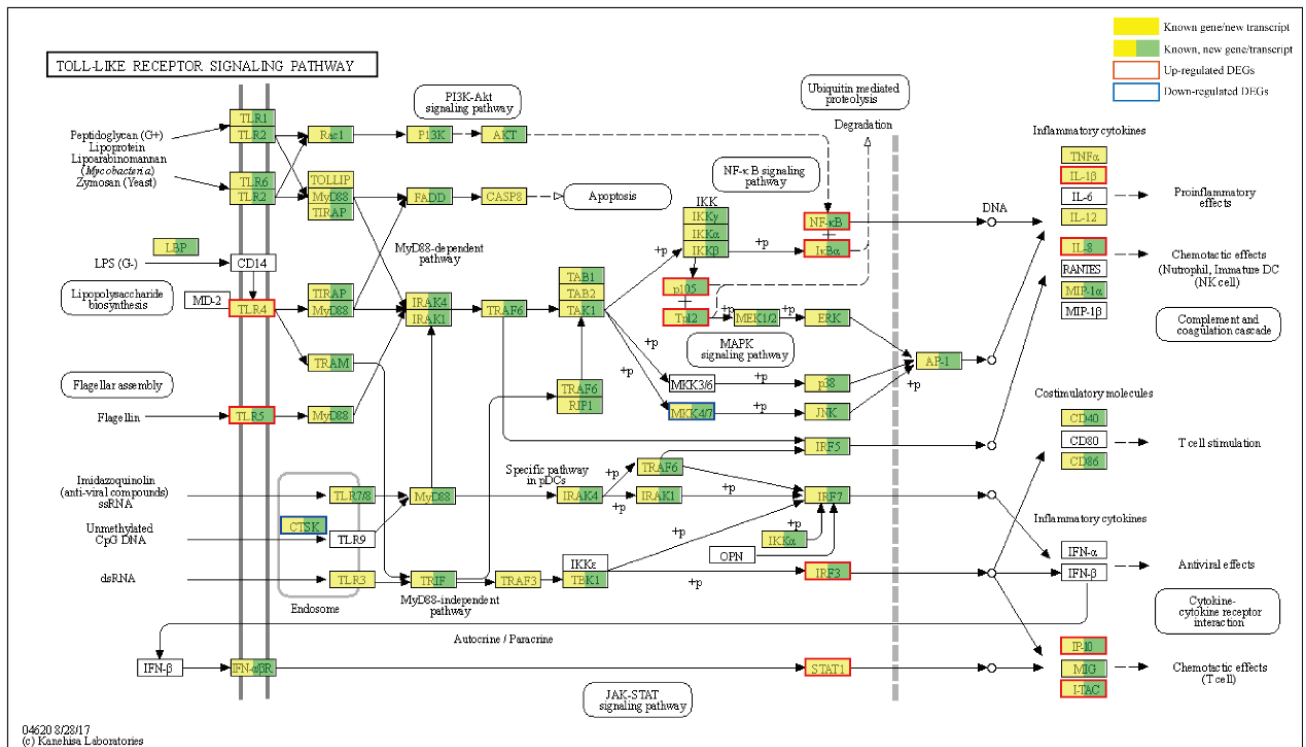


**B**

### GO classification



**Figure S2.** Functional classification of differentially expressed genes (DEGs) between the control and Eli groups. **(A)** COG, **(B)** GO annotation of DEGs.



**Figure S3.** DEGs in Toll-like receptor signaling pathway.