

Supplementary Materials

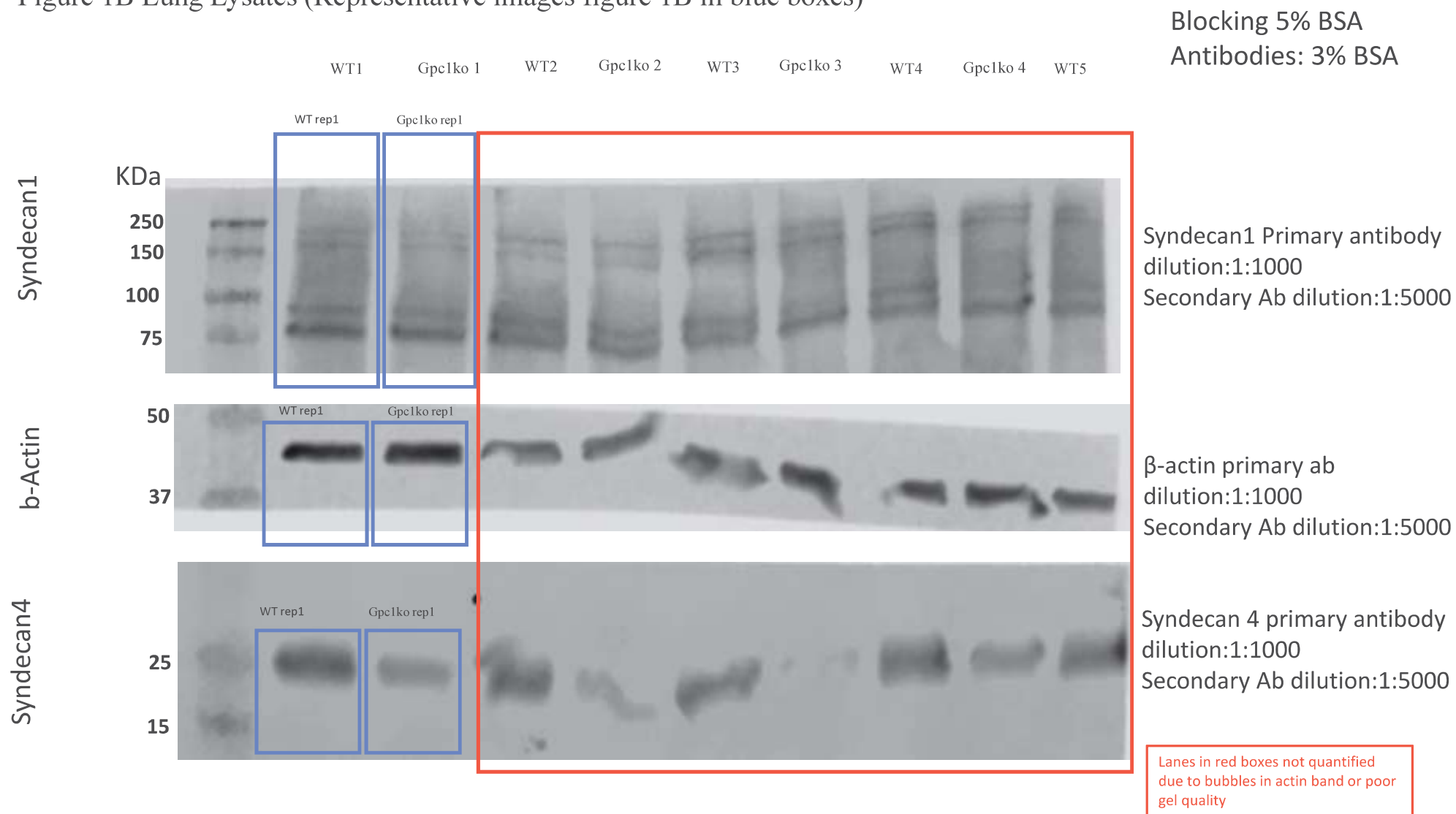
The pulmonary endothelial glycocalyx modifications in glypican 1 knockout mice do not affect lung endothelial function in physiological conditions.

Lakshmi N R Thota¹, Joaquin L Rosales¹, Ivan Placencia¹, Evgeny A Zemskov^{3,4} Paola Tonino⁵, Ashley N. Michael⁶, Stephen M Black^{3,4,8} Andreia Z Chignalia^{1,2,7, 9*}

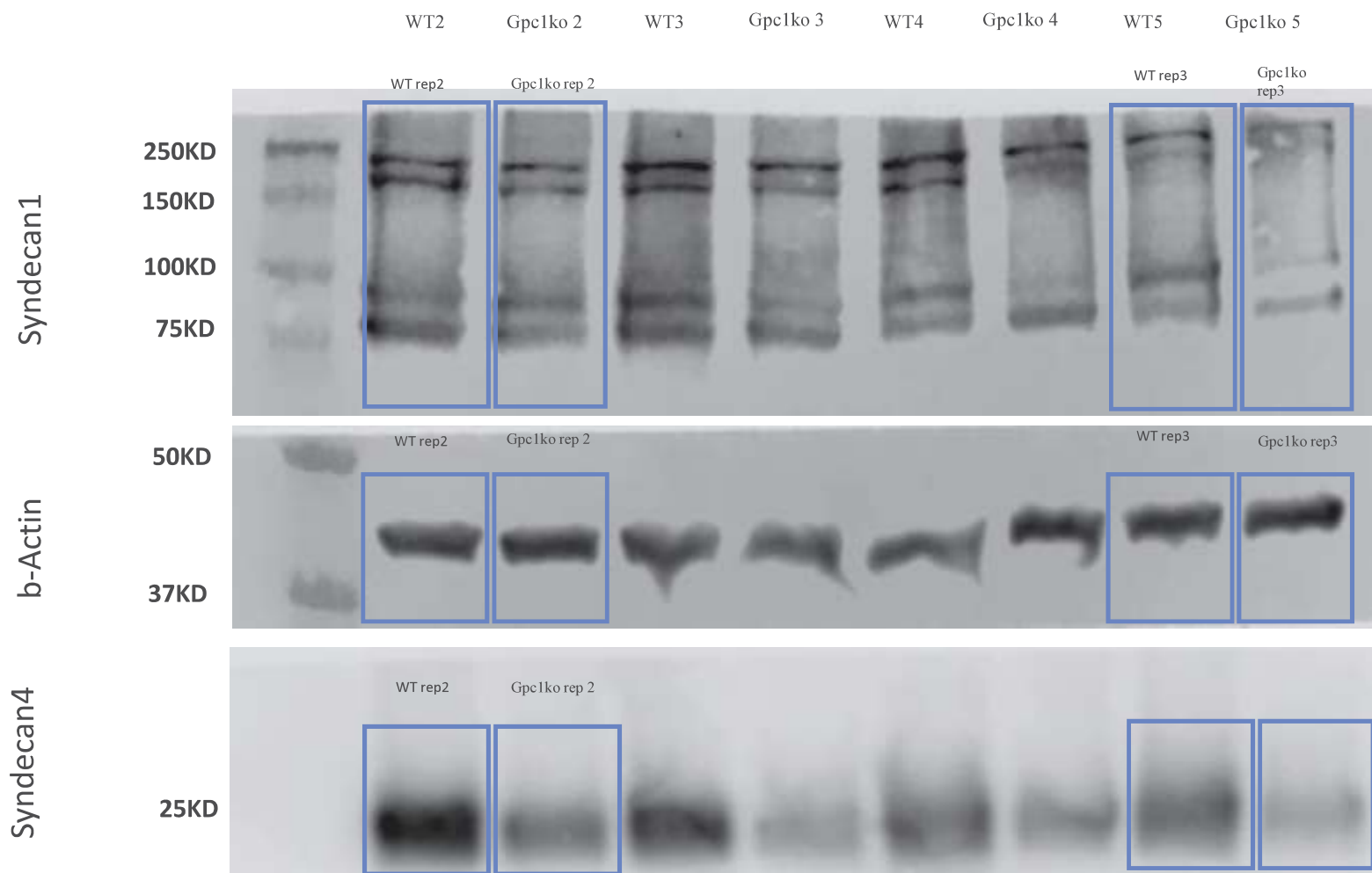
Original Membranes

Western Blot

Figure 1B Lung Lysates (Representative images figure 1B in blue boxes)



Lung Lysates (Representative images Figure 1 B in blue boxes)



Blocking 5% BSA
Antibodies: 3% BSA

Syndecan1 Primary antibody
dilution:1:1000
Secondary Ab dilution:1:5000

β -actin primary ab
dilution:1:1000
Secondary Ab dilution:1:5000

Syndecan 4 primary antibody
dilution:1:1000
Secondary Ab dilution:1:5000

Figure 3A Lung Lysates (Representative images figure 3A)

Blocking 5% BSA
Antibodies: 3% BSA

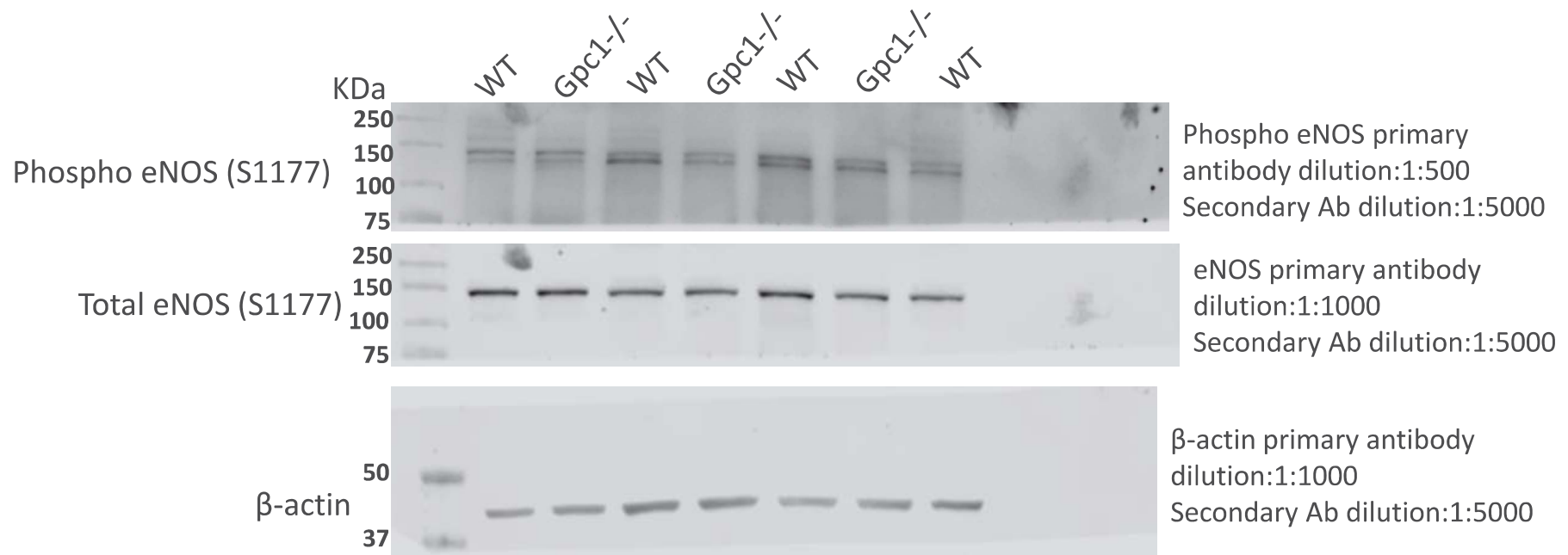
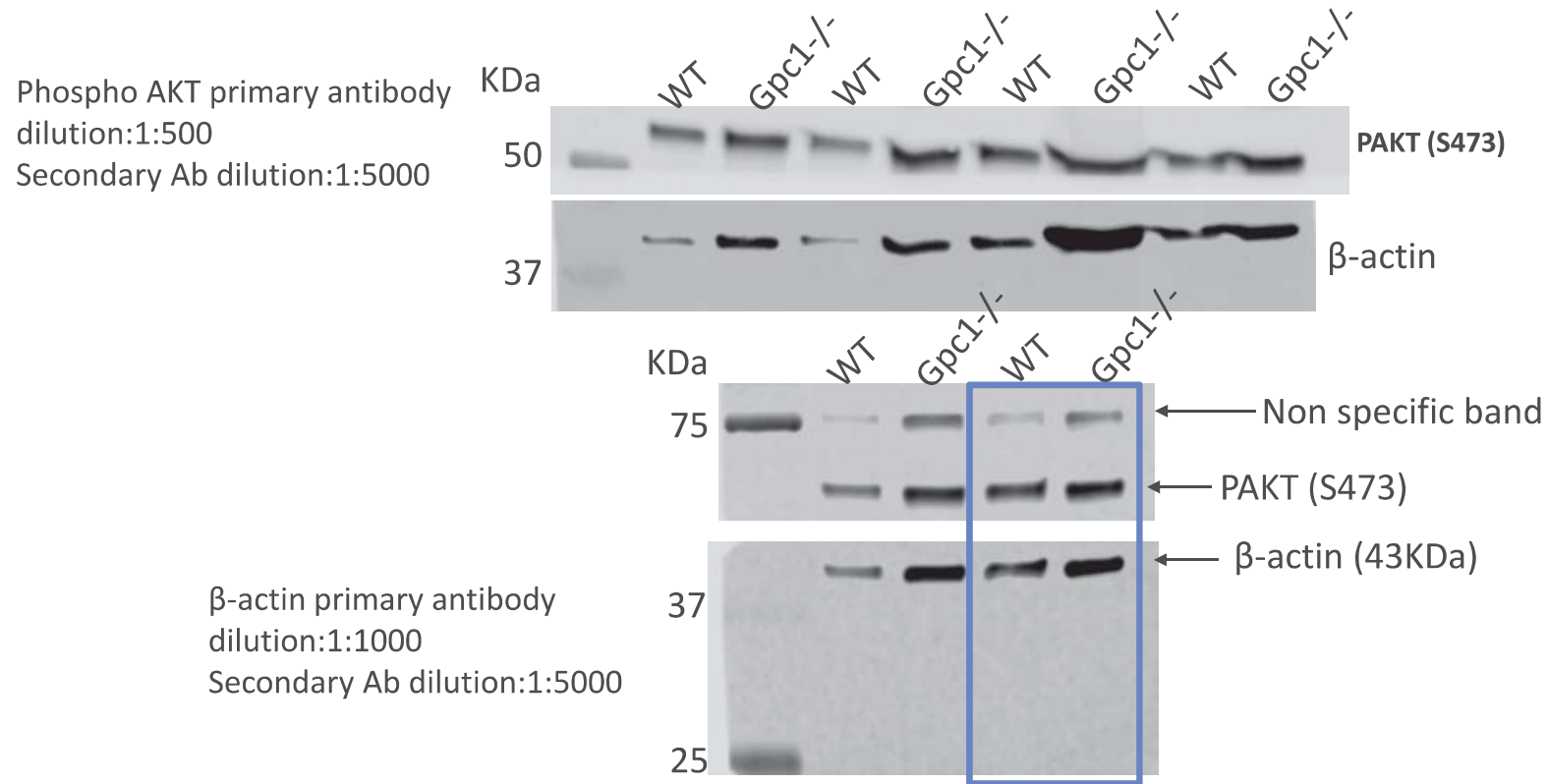


Figure 3E Lung Lysates (Representative images figure 3E are in the blue box)

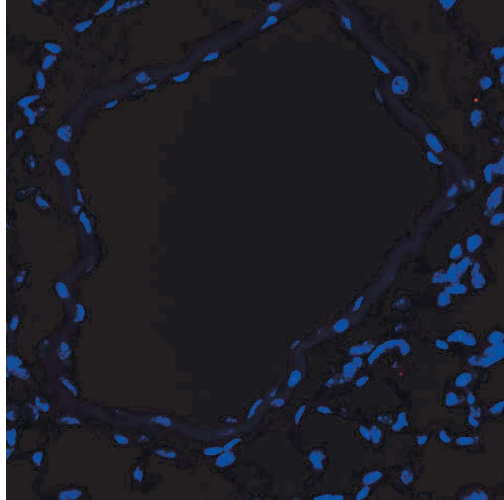
Blocking 5% BSA
Antibodies: 3% BSA



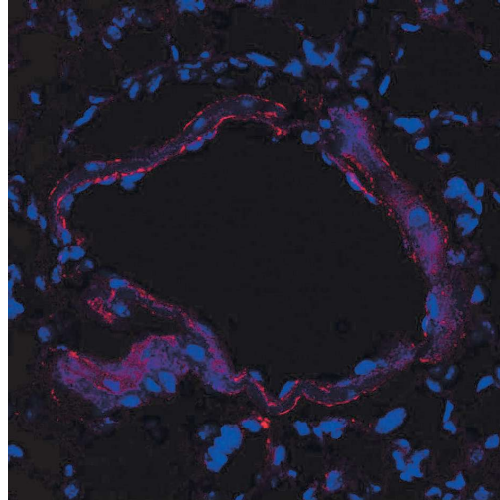
Supplementary material

Immunofluorescence – negative controls

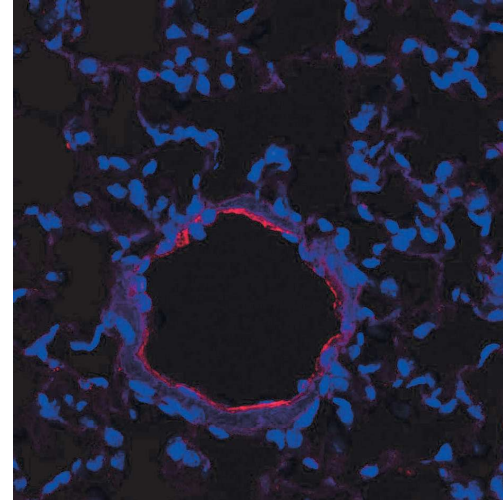
Negative Control



WT

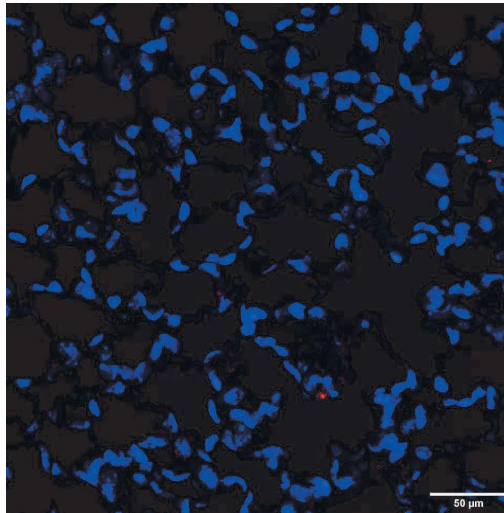


Gpc1^{-/-}

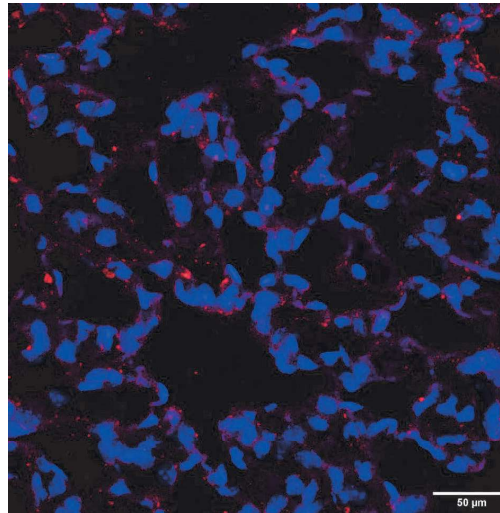


Heparan Sulfate
DAPI

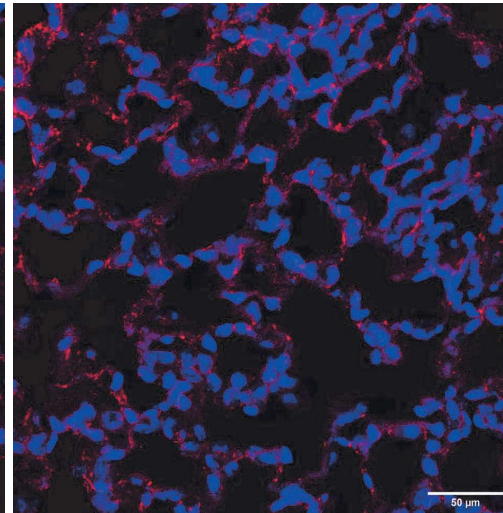
Negative Control



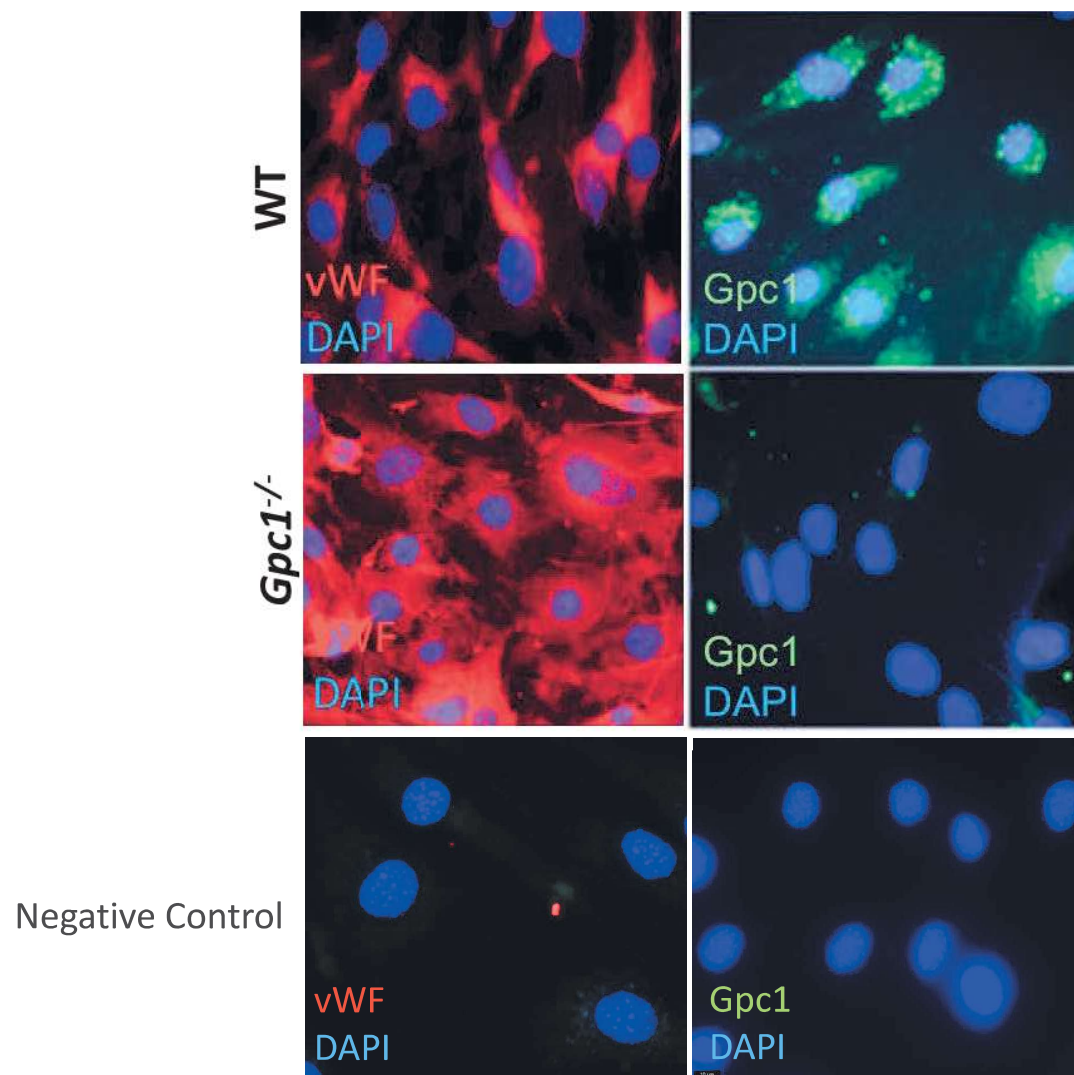
WT



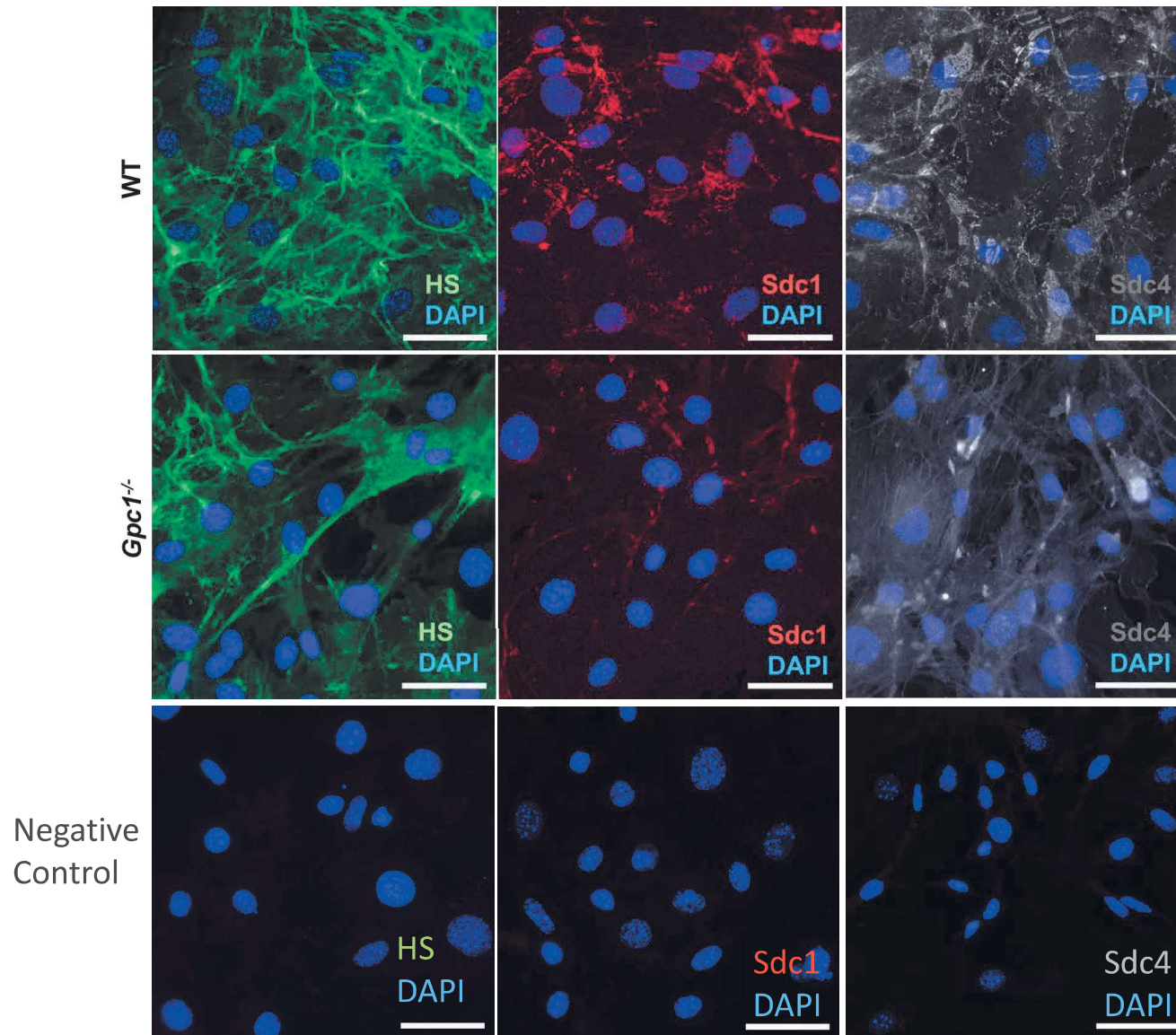
Gpc1^{-/-}



Representative
images and
corresponding
negative control
images for Figure 2



Representative images and corresponding negative control images for Figure 4



Representative images and corresponding negative control images for Figure 4