

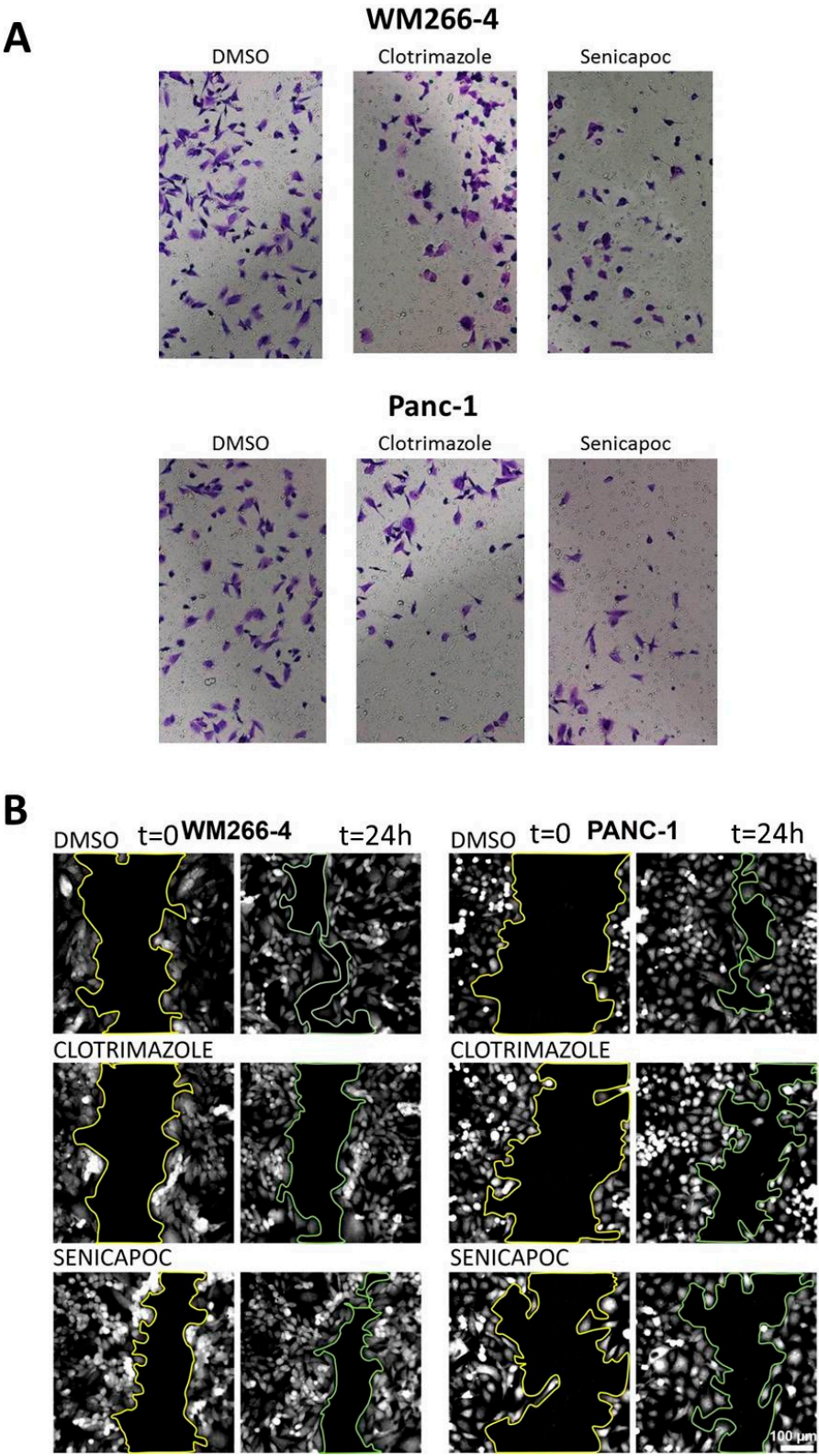
Supplementary Material for

**IK Channel-Independent Effects of Clotrimazole and Senicapoc on Cancer Cells Viability and Migration**

Authors: Paolo Zuccolini, Raffaella Barbieri, Francesca Sbrana, Cristiana Picco, Paola Gavazzo and Michael Pusch

Affiliation: Biophysics Institute, National Research Council, 16149 Genova, Italy

**Supplementary Figure S1. Example pictures of transwell (A) and wound-healing (B) assays.** Typical pictures are shown for the indicated conditions. In B, yellow lines indicate the cell front at t=0, and green lines indicate the cell front at t=24 h.



**Supplementary Figure S2. Actin staining of WM266-4 and Panc-1 cells after 72 h treatment.** Phalloidin staining after 72 hours of treatment with vehicle alone or with 30  $\mu$ M of clotrimazole or senicapoc in WM266-4 and Panc-1 cells. In WM266-4 actin structure seems irregularly arranged and less organized. Treatments with IK blockers induced in Panc-1 cells a reduction of thin phalloidin labeled protrusions, resembling filopodia (see arrows in panel B) as well as an evident change in cell shape.

