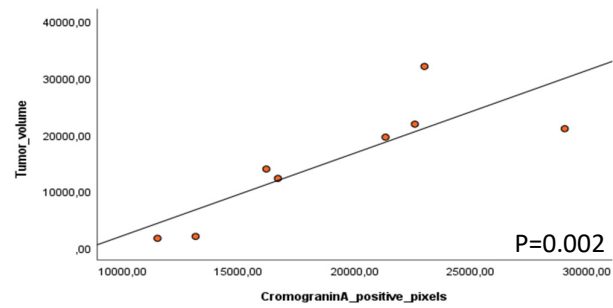
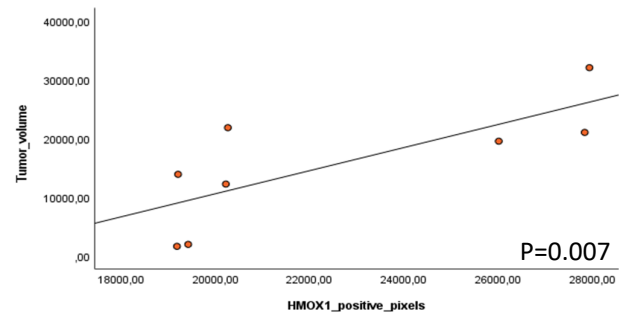
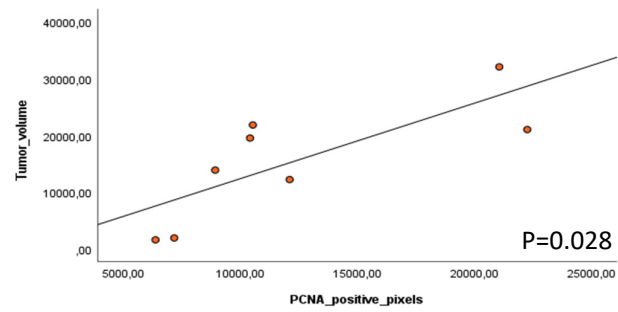
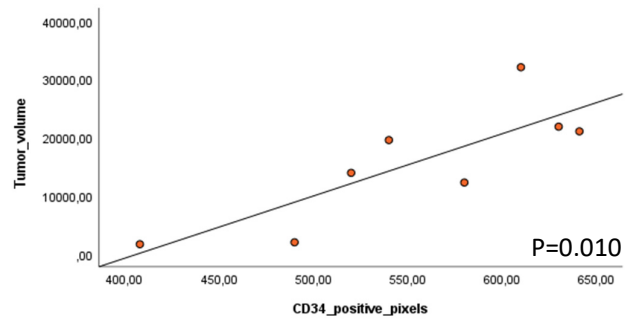
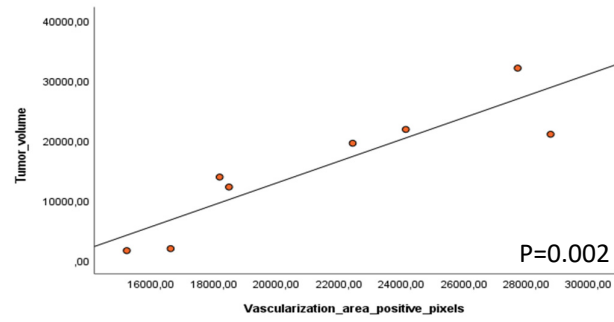


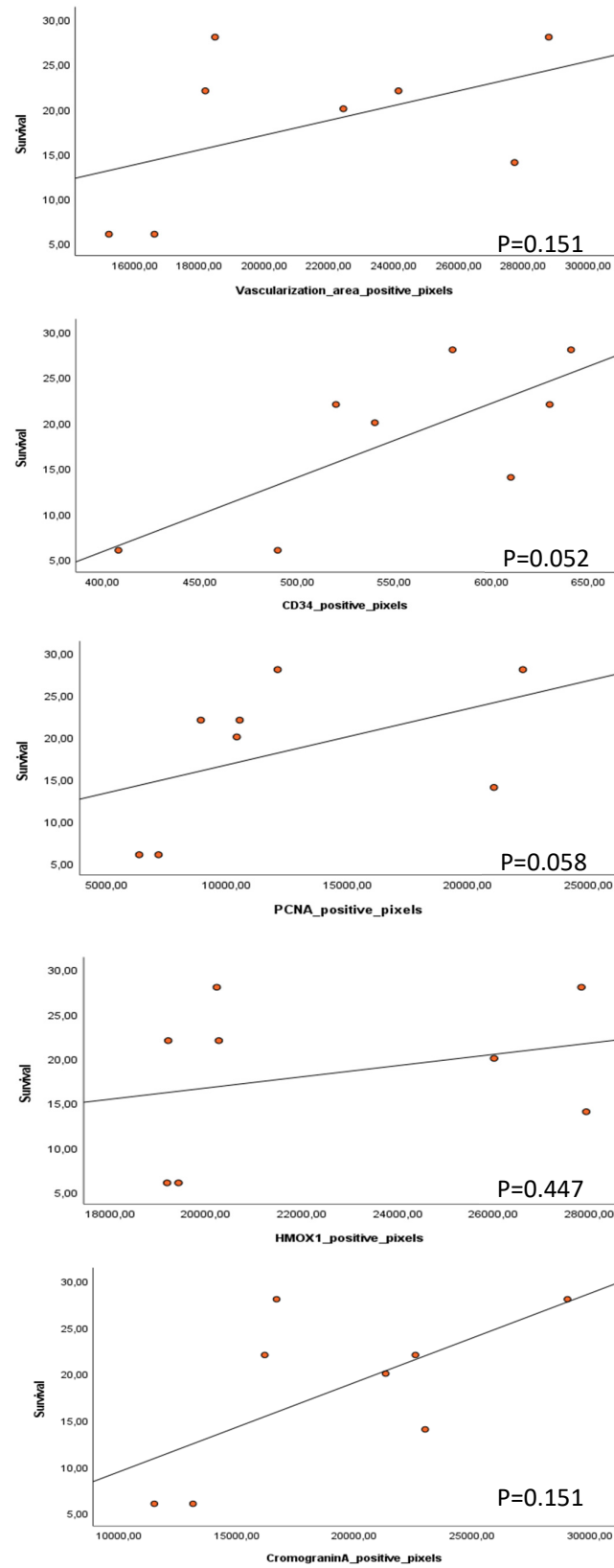
Supplementary Materials

Table S1. Tumor volume (mm³) in control and hyponatremic mice, as measured at different time points. Results are expressed as mean \pm SE.

	T0	T3	T6	T10	T12	T14	T20	T22	T26	T28
control group (mm ³)	60.4 \pm 123.7	106.5 \pm 22.38	233.7 \pm 64.8	576.5 \pm 242.5	807.5 \pm 308.4	1197.03 \pm 525.3	1543.2 \pm 402.5	1806.9 \pm 577.8	1790.6 \pm 303.2	2509.4 \pm 405.9
hyponatremic group (mm ³)	44.8 \pm 7.15	119.7 \pm 32.6	286.6 \pm 77.2	627.8 \pm 257.6	979.3 \pm 336.4	2136.8 \pm 988.03	2678.1 \pm 631.06	3164.7 \pm 839.3	2795.03 \pm 623.2	3692.5 \pm 817.7



(a)



(b)

Figure S1 (a). Correlation analysis between tumor volume and histological markers; **(b)** correlation analysis between survival and histological markers.