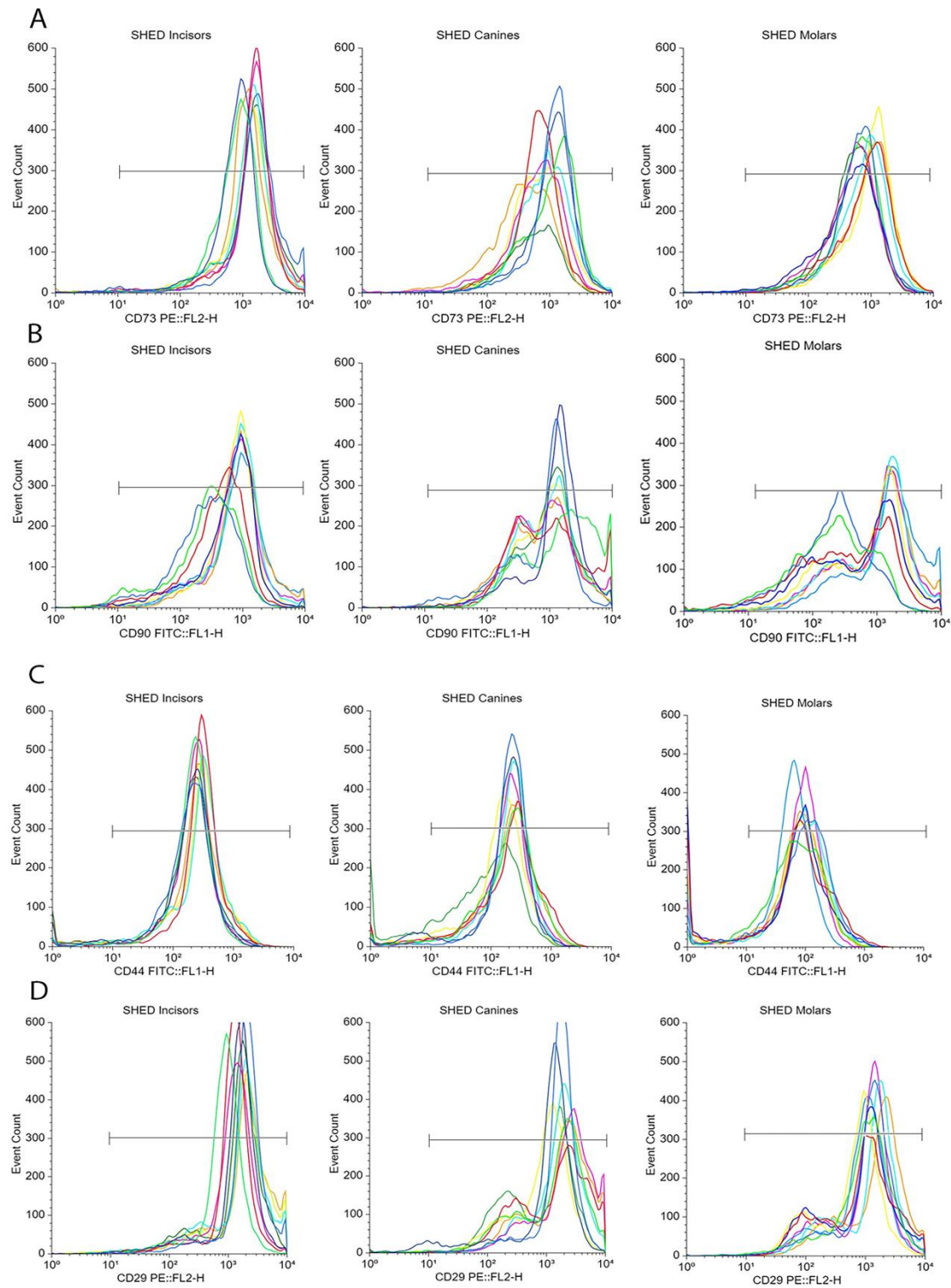


Supplementary Materials



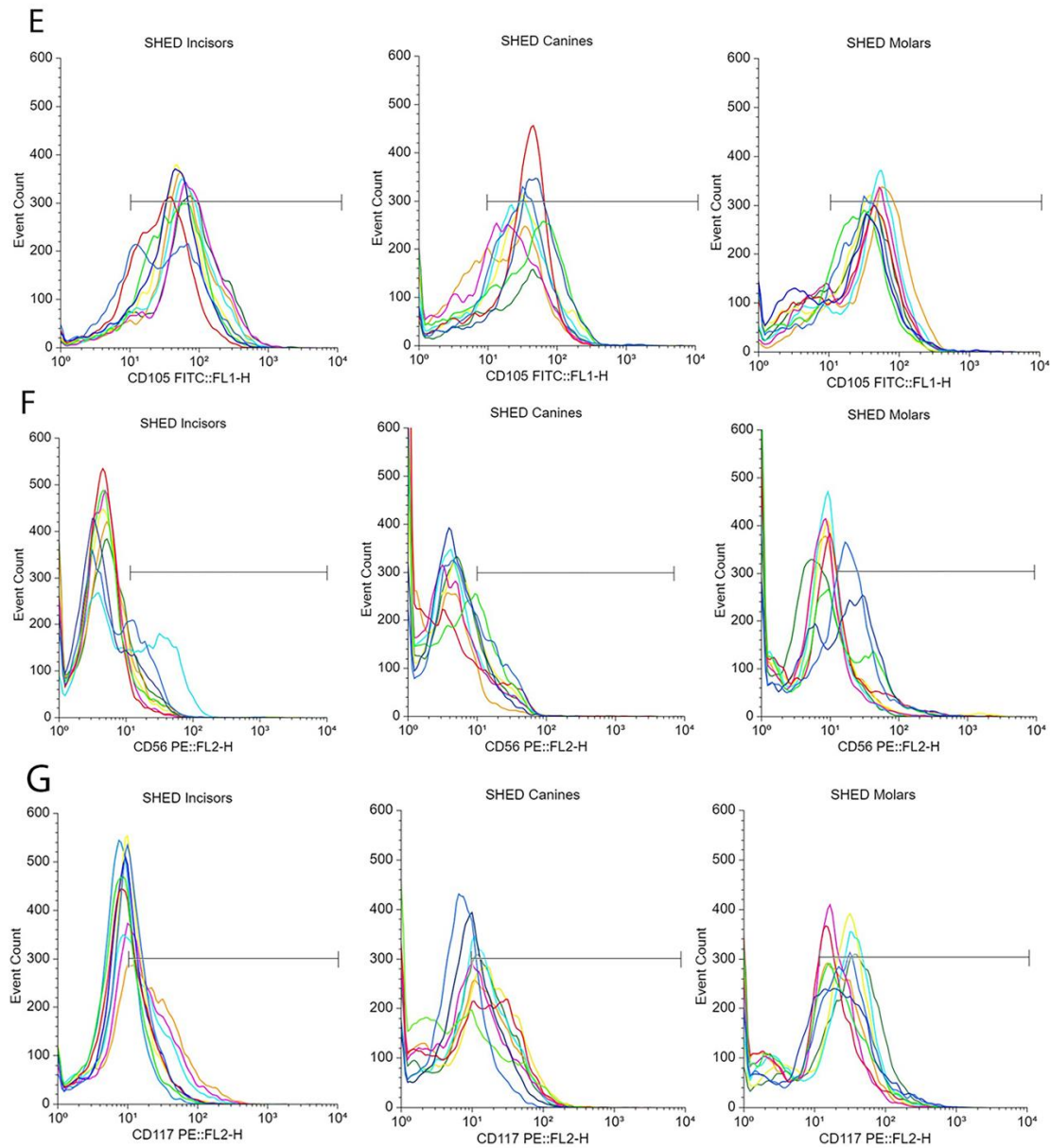


Figure S1. Representative histograms illustrating the phenotypic evaluation of SHED populations by flow cytometry from passage 2 to 10. Fig 1.A presents histograms for the CD73 marker in SHED populations from incisors, canines, and molars at passages 2 to 10. In Fig 1.B, histograms display the CD90 marker in SHED populations of incisors, canines, and molars across passages 2 to 10. Similarly, Fig 1.C showcases histograms for the CD44 marker in SHED populations from incisors, canines, and molars at passages 2 to 10. Fig 1.D and Fig 1.E provide representative histograms for the CD44 and CD105 markers, respectively, in SHED populations from incisors, canines, and molars at passages 2 to 10. Finally, Fig 1.F and Fig 1.G

depict histograms for the CD56 and CD117 markers, respectively, in SHED populations from incisors, canines, and molars at passages 2 to 10.

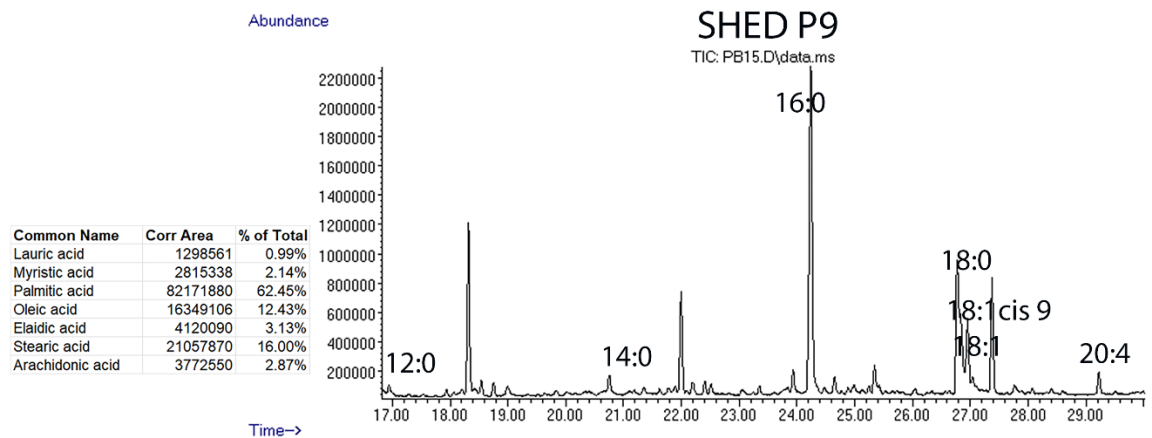
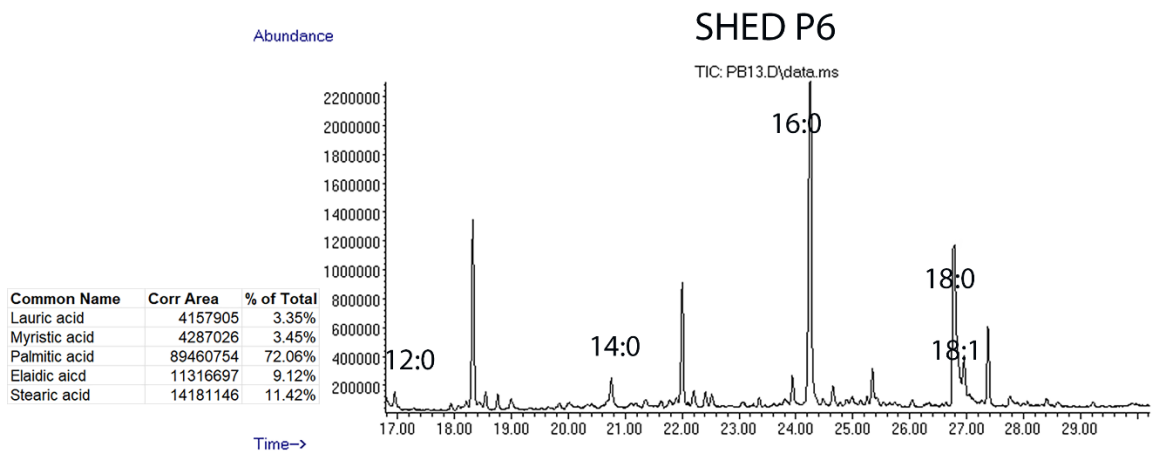
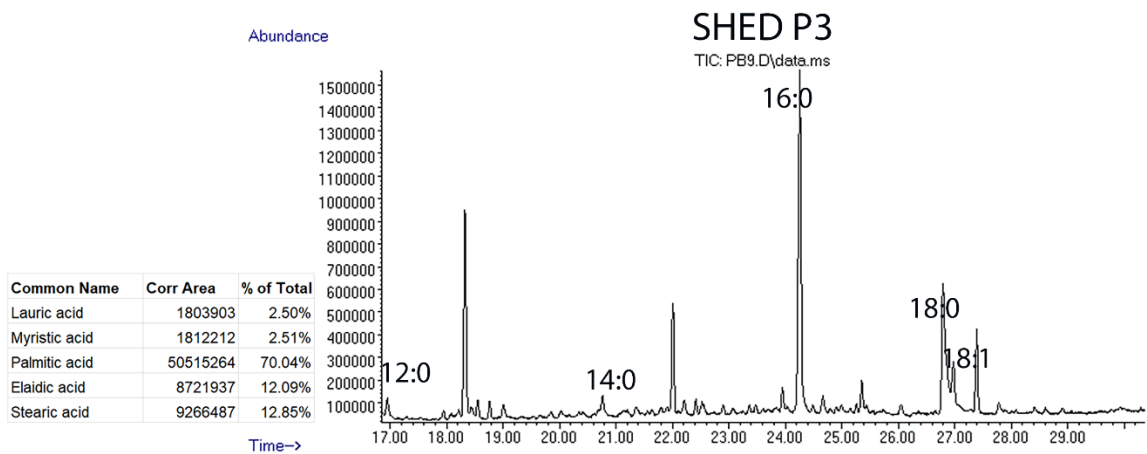


Figure S2. Representative chromatograms presenting the fatty acid composition assessed by GC-MS. The fatty acid content of SHED populations was analyzed at different passages (P3, P6, and P9) during their cultivation using GS-MS