

Supplementary information

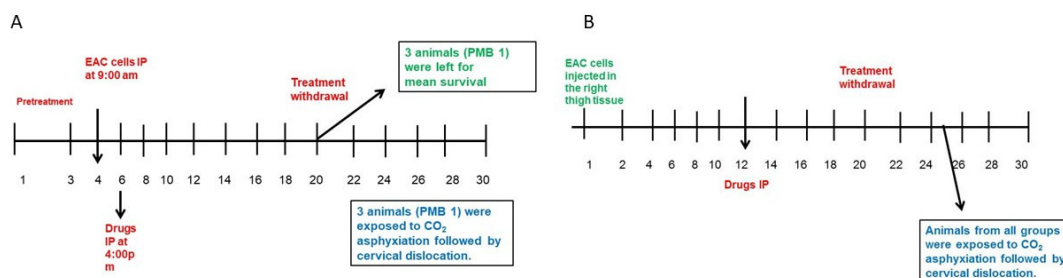


Figure S1A. Study design of EAC liquid tumor model in Swiss albino mice. **S1B:** Study design of EAC solid tumor model in Swiss albino mice.

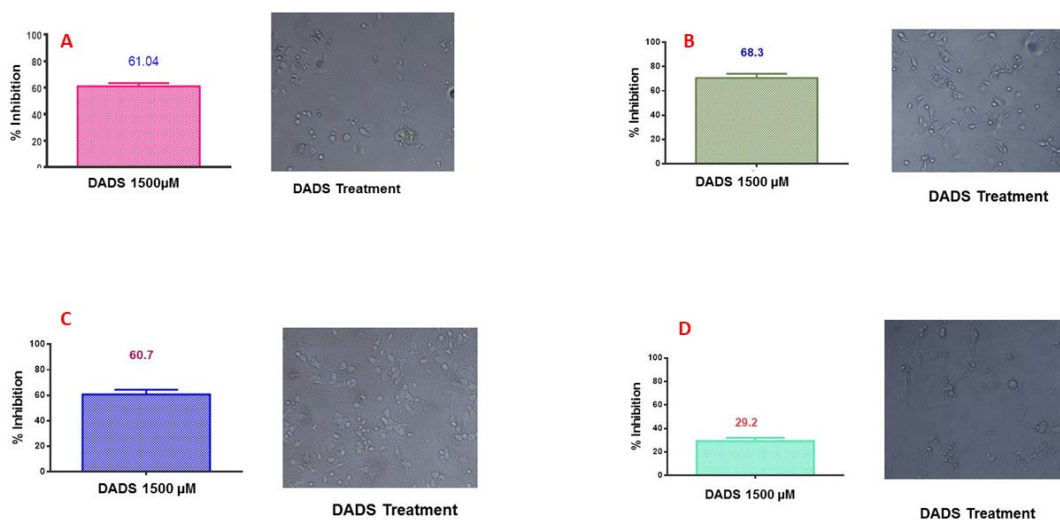


Figure S2. DADS (1500µM) decreased the viability of MDA-MB-468 (S2A), MDA-MB-231 (S2B), and MCF-7 (S2C) cells. DADS has also reduced the viability of normal cell line BEAS-2B (S2D).

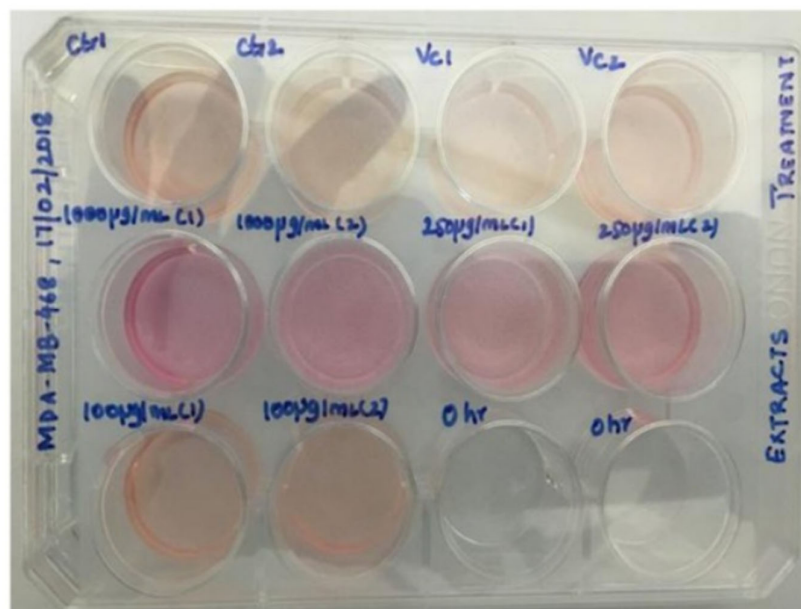


Figure S3. Cytostatic effect of the microbial extract on MDA MB-468 cell growth. MDA-MB-468 cells were treated with the increasing concentration of the microbial extract (100 µg/ml, 250 µg/ml and 1000µg/ml) for 48 hours in six well plates. The media color in the treatment group showed less consumption of nutrients as evidenced by pink color compared to control /VC wherein the medium is pale yellow in color.

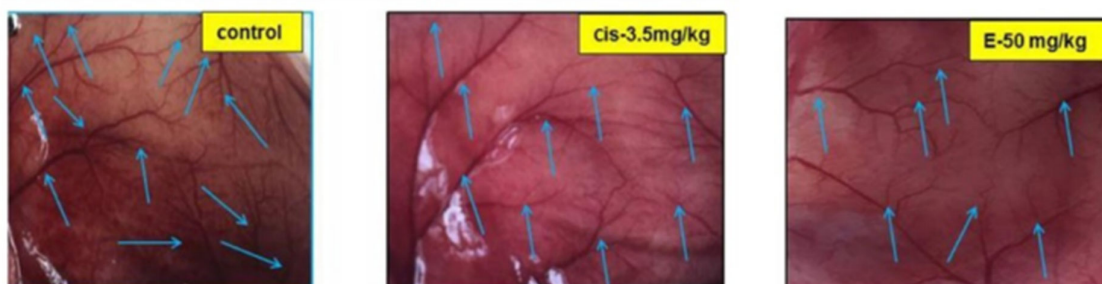


Figure S4. PMB1 reduced angiogenesis in mice. The effect of microbial extract on angiogenesis was examined in the peritoneum of EAC-xenografted mice. PMB1 inhibited the formation of blood vessels at the concentration of 50 mg/kg body weight.

List of Supplementary Tables:**Table S1.** EAC liquid tumor model study groups. Number of mice in each group = 5.

Group	Treatment
Normal	Untreated
Control	EAC
Standard (Positive Control)	EAC + Cisplatin 3.5 mg/kg
PMB1(High Dose)	EAC + PMB1 100mg/kg
PMB1(Low Dose)	EAC + PMB1 50mg/kg

Table S2. EAC solid tumor model study groups. Number of mice in each group = 5.

Group	Treatment
Normal	Untreated
Control	EAC
Standard (Positive Control)	EAC + Cisplatin 3.5 mg/kg
PMB1(High Dose)	EAC + PMB1 50mg/kg
PMB1(Low Dose)	EAC + PMB1 25mg/kg

Table S3. IC-50 values of microbial extracts PMB1 and PMB2 against BC cell lines and normal lung epithelial cell line BEAS-2B.

IC-50 values of pharmacological agents tested				
Inhibitor	MDA-MB-468	MDA-MB-231	MCF-7	BEAS-2B
PMB1($\mu\text{g/mL}$)	795	939.3	>2000	>2000
PMB2($\mu\text{g/mL}$)	>2000	>2000	>2000	>2000

Table S4. Average body weight of Swiss albino mice on the day of sacrifice.

Treatment	Dose	Average body weight on day 20
Normal	Untreated	22.6 ± 0.48
Control	EAC untreated	45.1 ± 2.46
Cisplatin	3.5 mg/kg	33.1 ± 0.64
PMB1	50 mg/kg	28.2 ± 1.24