

# Supplementary Materials

## Optimization of Mobile Phase Modifiers for Fast LC-MS-Based Untargeted Metabolomics and Lipidomics

Tomas Cajka \*, Jiri Hricko, Lucie Rudl Kulhava, Michaela Paucova, Michaela Novakova and Ondrej Kuda

Institute of Physiology of the Czech Academy of Sciences, Videnska 1083, 14200 Prague, Czech Republic

\* Correspondence: tomas.cajka@fgu.cas.cz

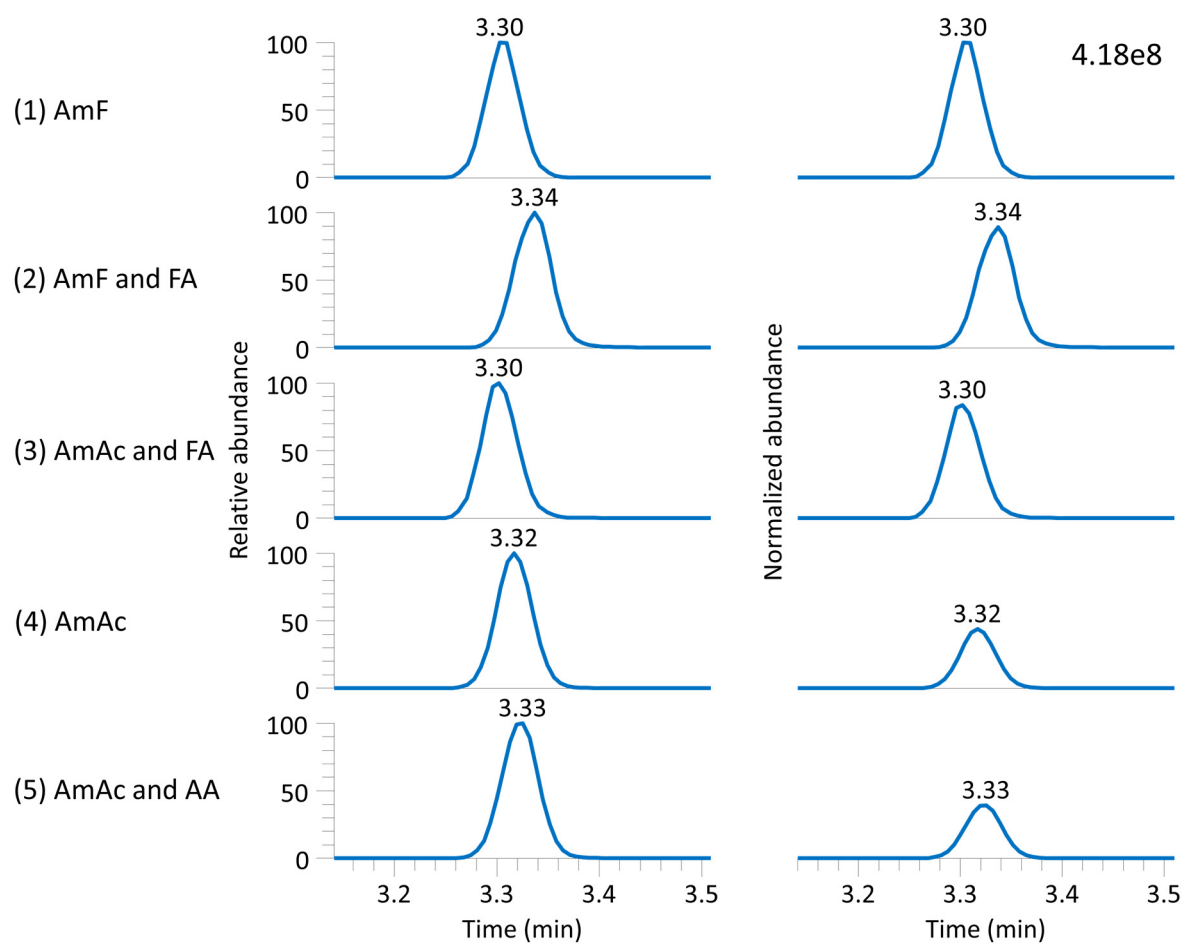
**Figure S1.** Examples of extracted ion chromatograms of different lipid classes. RPLC-ESI(+): PC 36:1, CE 18:2, cholesterol; RPLC-ESI(-): FA 18:2, CL 72:8, PA 34:3, PG 36:6.

**Figure S1.** Examples of extracted ion chromatograms of different lipid classes. RPLC-ESI(+): PC 36:1, CE 18:2, cholesterol; RPLC-ESI(-): FA 18:2, CL 72:8, PA 34:3, PG 36:6.

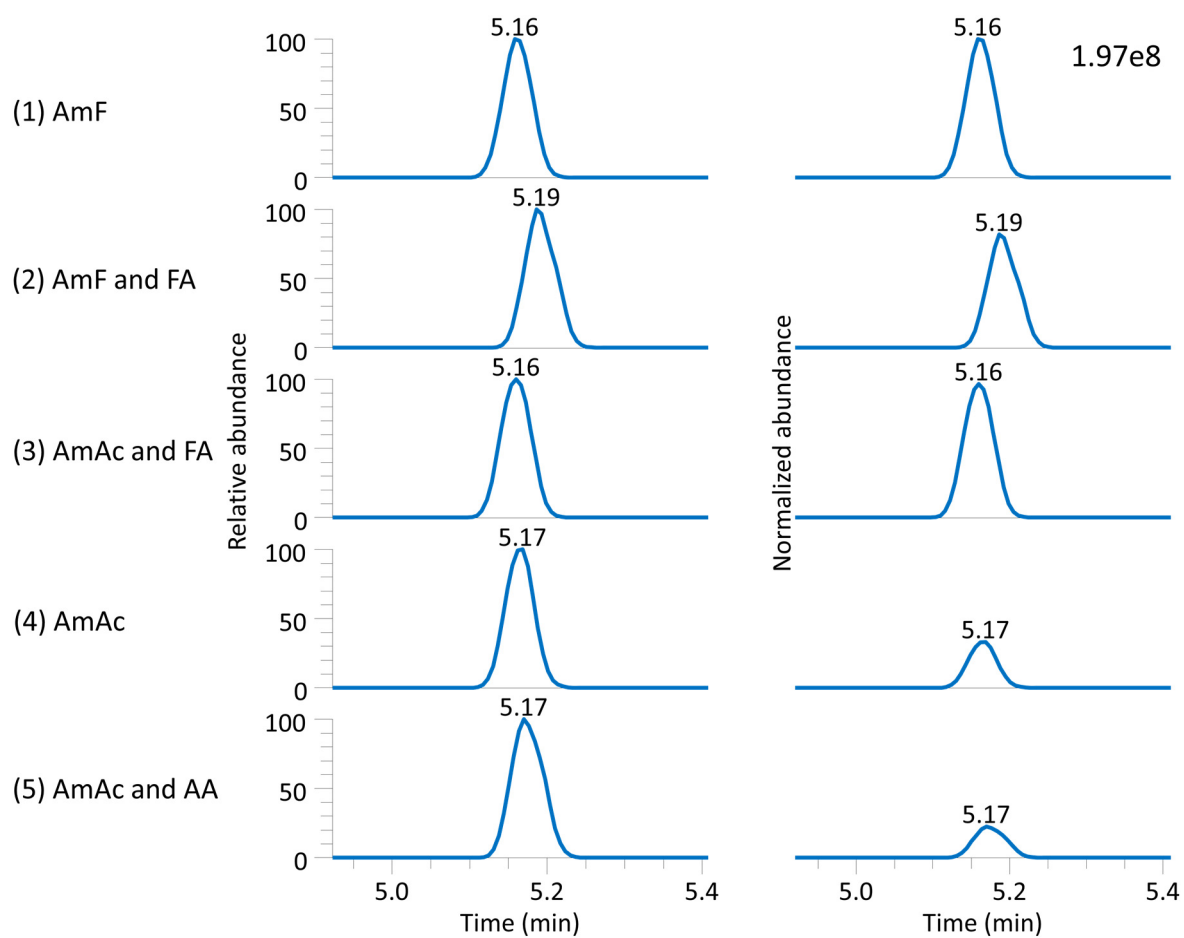
RPLC-ESI(+)

PC 36:1, PC 18:0\_18:1; [M+H]<sup>+</sup>

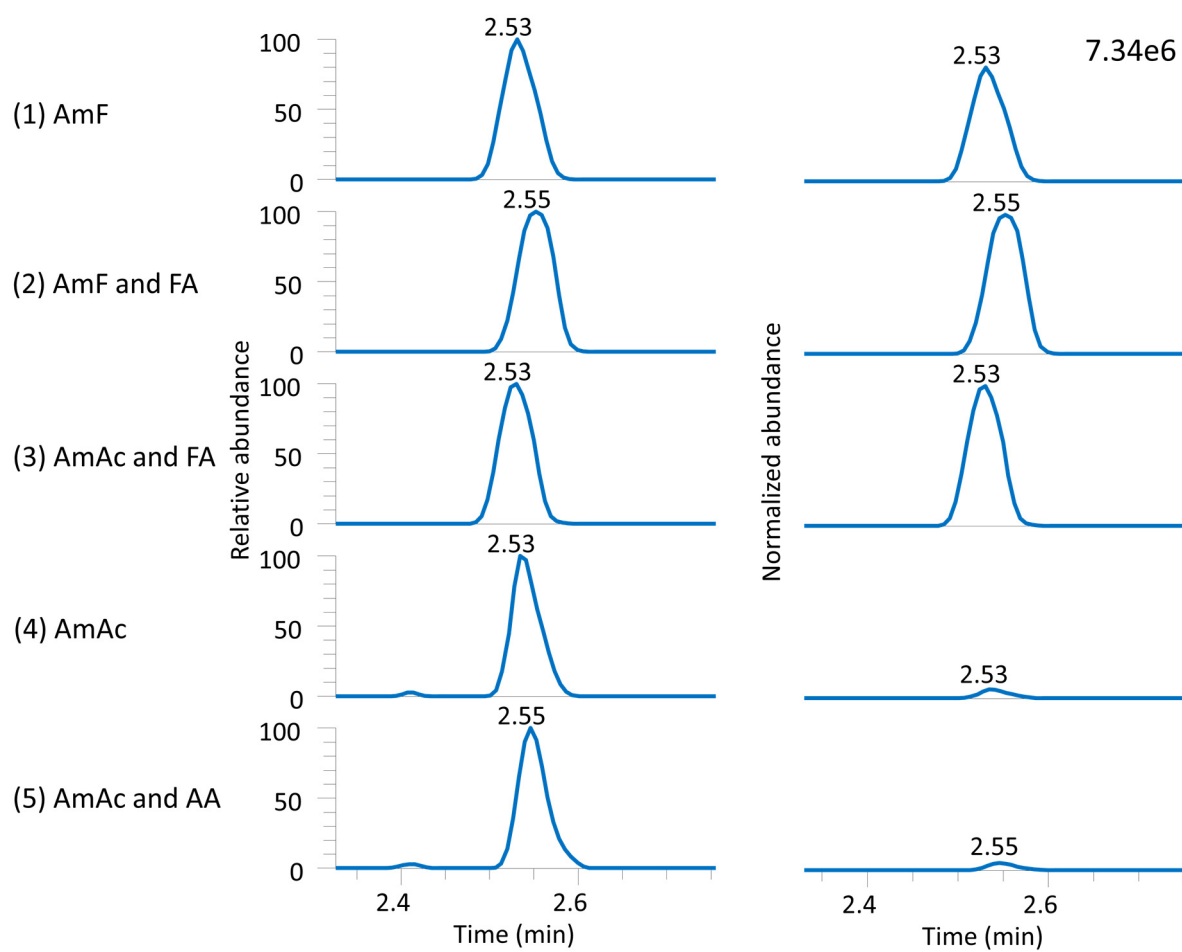
*m/z* 788.6163



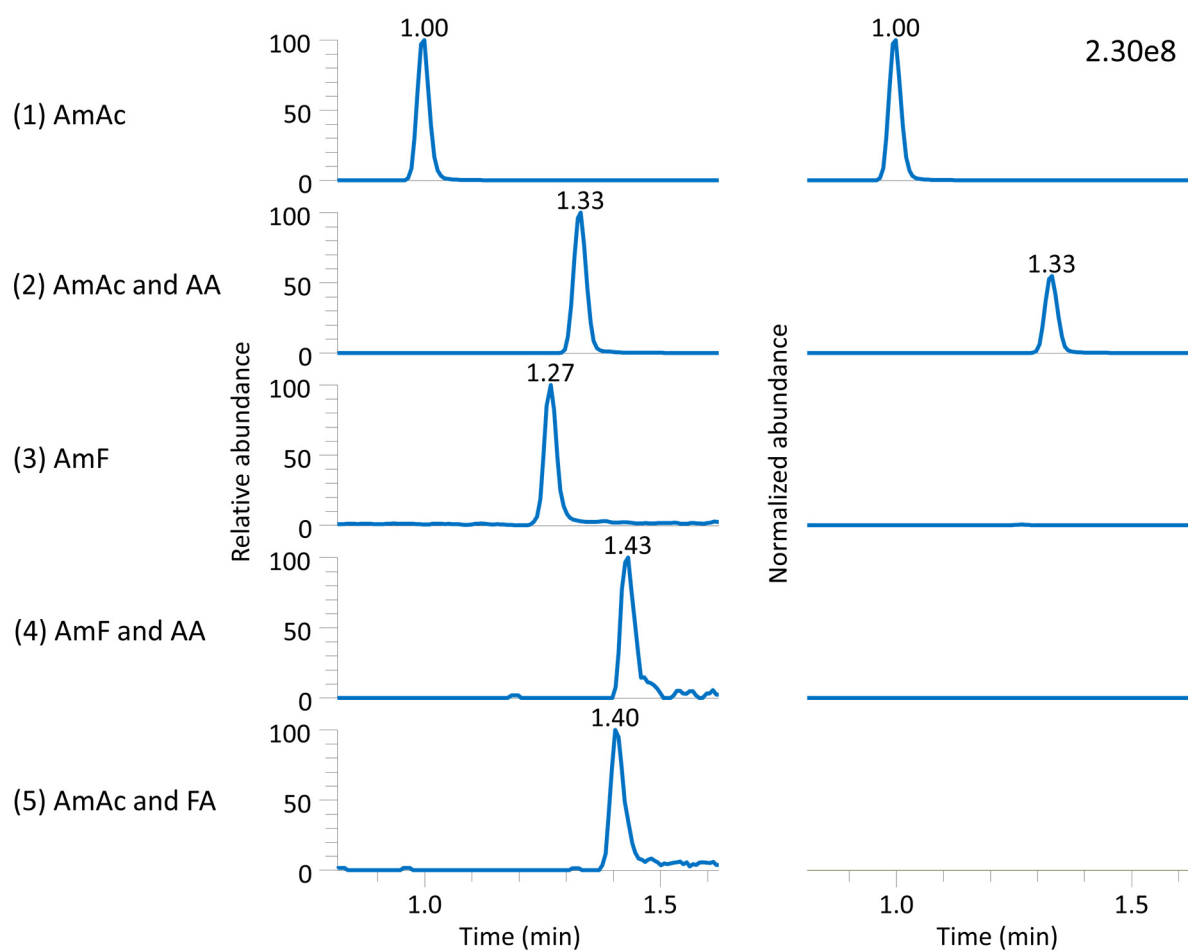
RPLC-ESI(+)  
CE 18:2; [M+NH<sub>4</sub>]<sup>+</sup>  
*m/z* 666.6184



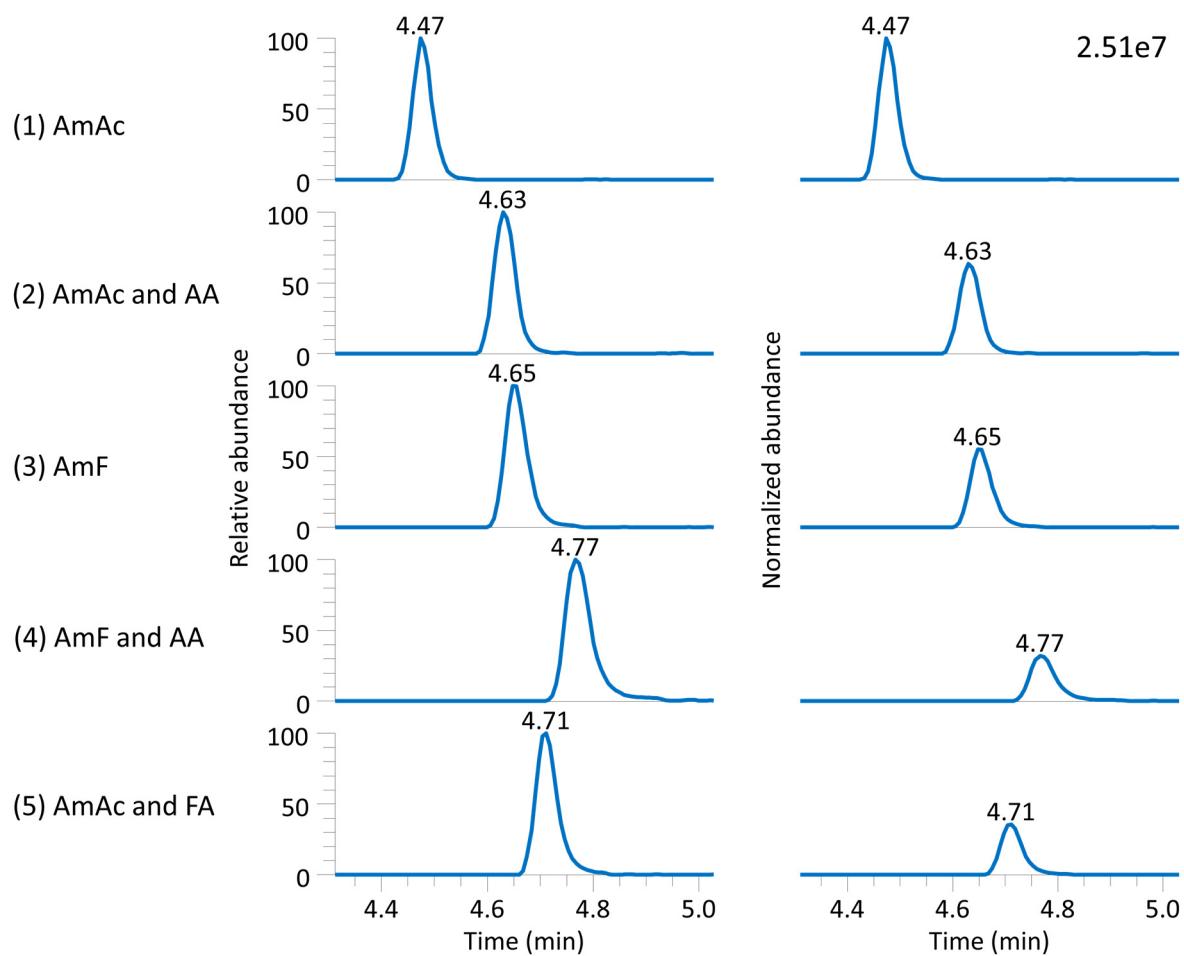
RPLC-ESI(+)  
Cholesterol;  $[M-H_2O+H]^+$   
 $m/z$  666.6184



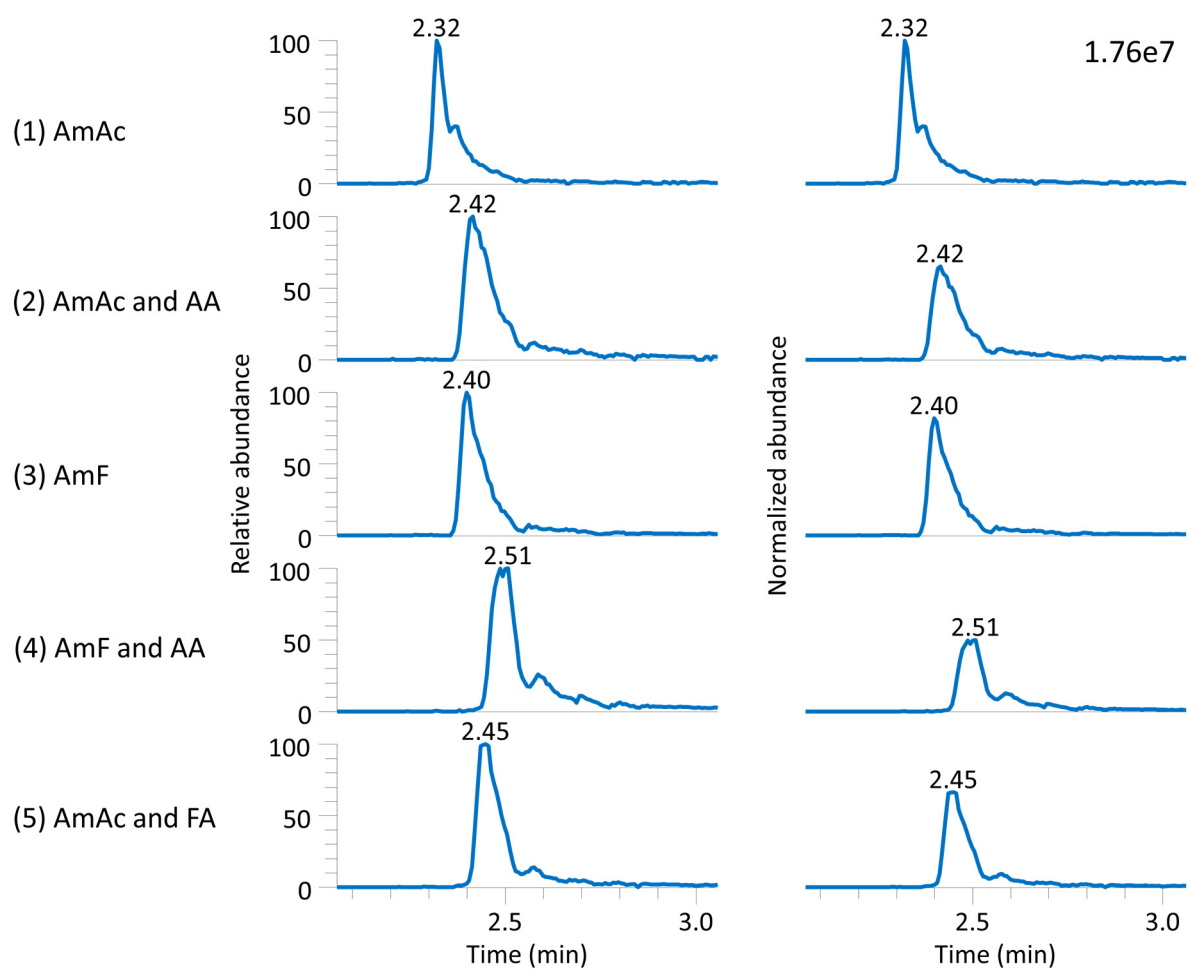
RPLC-ESI(-)  
FA 18:2; [M-H]<sup>-</sup>  
*m/z* 279.2329



RPLC-ESI(-)  
CL 72:8|CL 18:2\_18:2\_18:2\_18:2; [M-H]<sup>-</sup>  
*m/z* 1447.9650



RPLC-ESI(-)  
PA 34:3 | PA 16:0\_18:3; [M-H]<sup>-</sup>  
*m/z* 669.4501



RPLC-ESI(-)  
PG 36:6 | PG 18:3\_18:3; [M-H]<sup>-</sup>  
*m/z* 765.4712

