

Table S1. Primer sequences

Gene	Forward 5'-3'	Reverse 5'-3'	Accession no/source
<i>c-fos</i>	GTGCAGCACGGCTTCACCGA	TTGAGCTGCGCCGTTGGAGG	NM_205569.1
<i>bdnf</i>	GGCGAAGAGCGGACGAATATC	AAGGAGACCATTTCAGCAGGACAG	NM_131595.2
<i>htr1aa</i>	CAGAGCAGAGCAGCACAAAG	TGGTCTGAGAGTTCTGGTCTAATC	NM_001123321.1
<i>htr1b</i>	GTGTCGGTGCTCGTGATG	CAGCCAGATGTCGCAGATG	NM_001128709.1
<i>htr2b</i>	GCTGCTCATTCTTCTGGTCAT	GTTAGTGGCGTTCTGGAGTT	NM_001044743.1
<i>gabarapa</i>	AGGATCCACTTGAGGGCTGA	CTTCTTCGTGATGCTCCTGGT	NM_001013260.1 /
<i>gabaraph</i>	TGTAAACAACGTCATTCCCCCT	ATCTTCTTCGTGATGTTCTGGT	NM_001386387.1
<i>galn</i>	AAGGATACTCCCAGTGCAAGG	CTTCCTGCCAGTCCGTGTT	NM_001346239.1
<i>th1</i>	GACGGAAGATGATCGGAGACA	CCGCCATGTTCCGATTCT	NM_131149.1 /
<i>penka</i>	CTTTGAGCGCCTGTCTCGTG	TTCTAATGTGCAGGCCAGTGTG	NM_200083.2
<i>penkb</i>	TGGTGGCAGGAGTCTAAACG	TTGGACATCGCGGACATCAT	NM_182883.1
<i>ef1</i>	CTGGAGGCCAGCTCAAACAT	ATCAAGAAGAGTAGTACCGCTAGCATTAC	

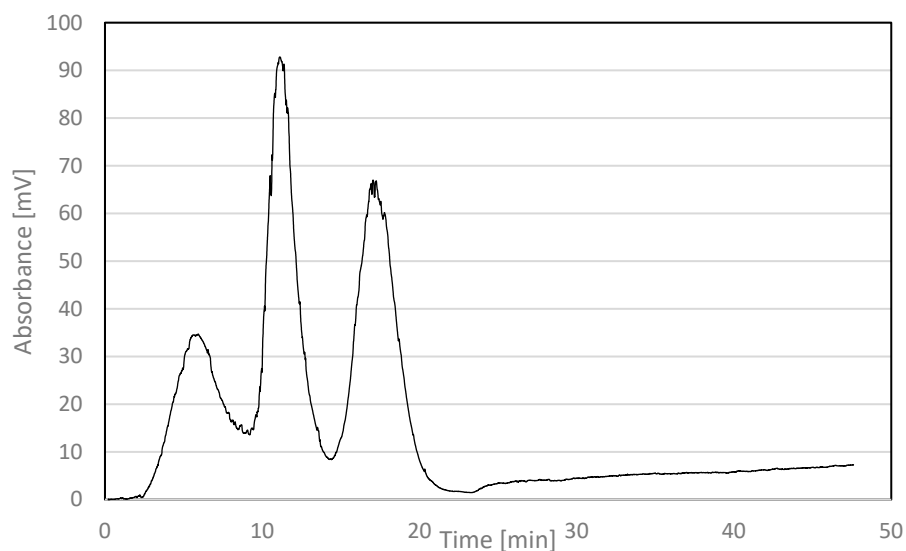


Figure S1. LLC chromatogram for the separation of halfordin from the methanol leaf extract of *H. kendack*. Operating conditions: Unit: CPC250; column volume 250 mL; solvent system *n*-hexane/ethyl acetate/methanol/water 3/1/3/1 (v/v/v/v); descending mode (lower phase as mobile phase); rotational speed 1700 rpm; flow rate 8 mL/min; sample 270 mg extract dissolved in 10 mL lower phase; injection volume 10 mL; UV 254 nm.