

Supplementary Materials

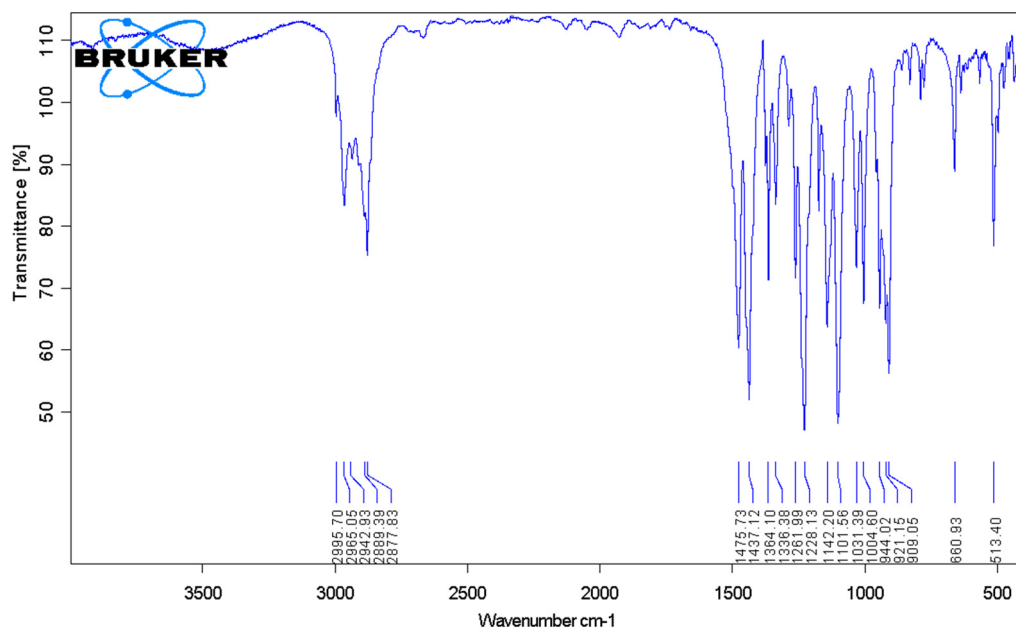


Figure S1. IR spectra of the Mn4 compound

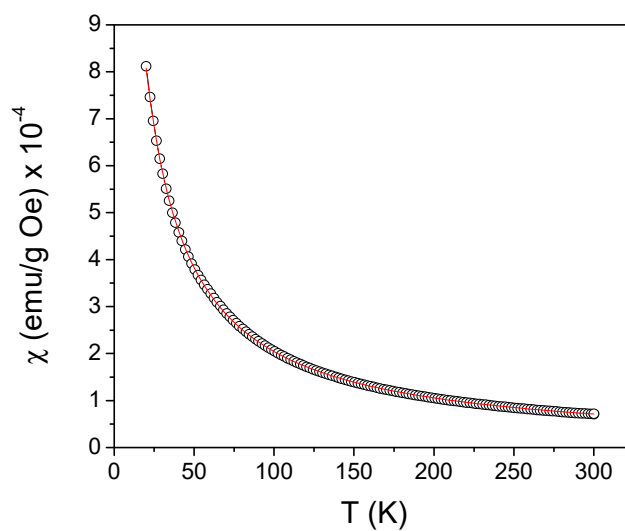


Figure S2. Mass susceptibility (χ) as a function of temperature (T) measured on the Mn1 compound, in $H_{\text{appl}} = 10$ kOe (open symbols). At $T = 300$ K, $\chi = (7.2 \pm 0.2) \times 10^{-5}$ emu/g Oe. The red line is the fitting curve to the Curie Weiss law with $\theta = (-7.0 \pm 0.3)$ K. From relation (2) reported in the main article, $\mu_{\text{eff}} = (5.9 \pm 0.2)$ BM.

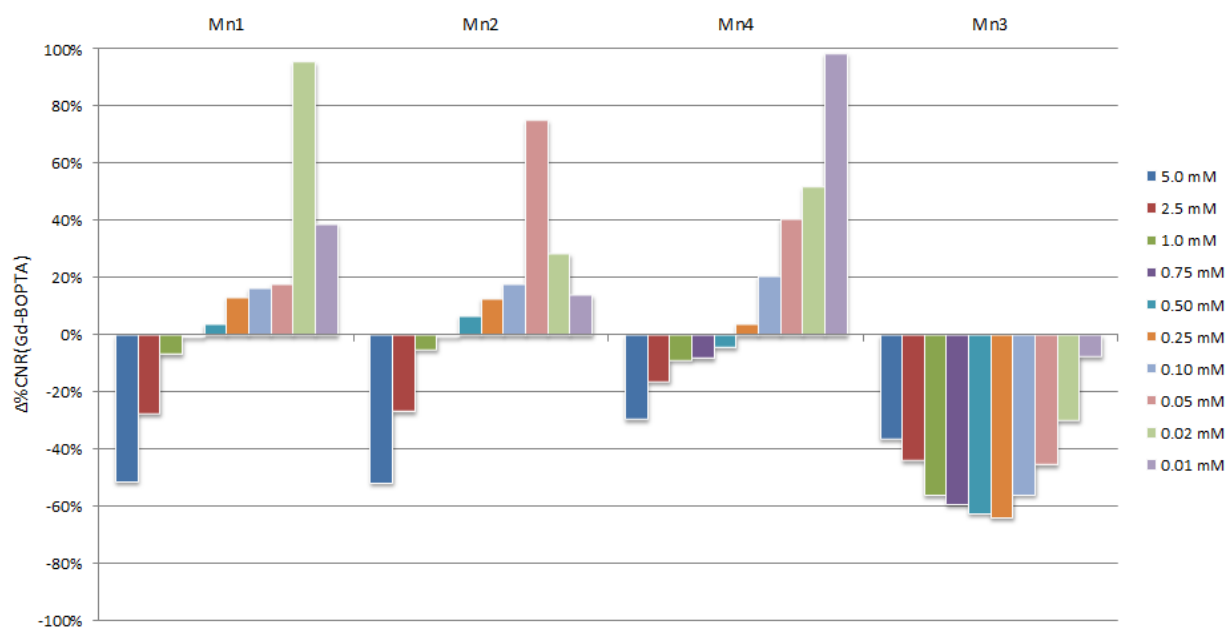


Figure S3. Variation of contrast to noise ratio (CNR) relative to Gd-BOPTA in the same concentration for Mn complexes represented in graphical format.