

Figure S1: Changes in gas concentrations over time.

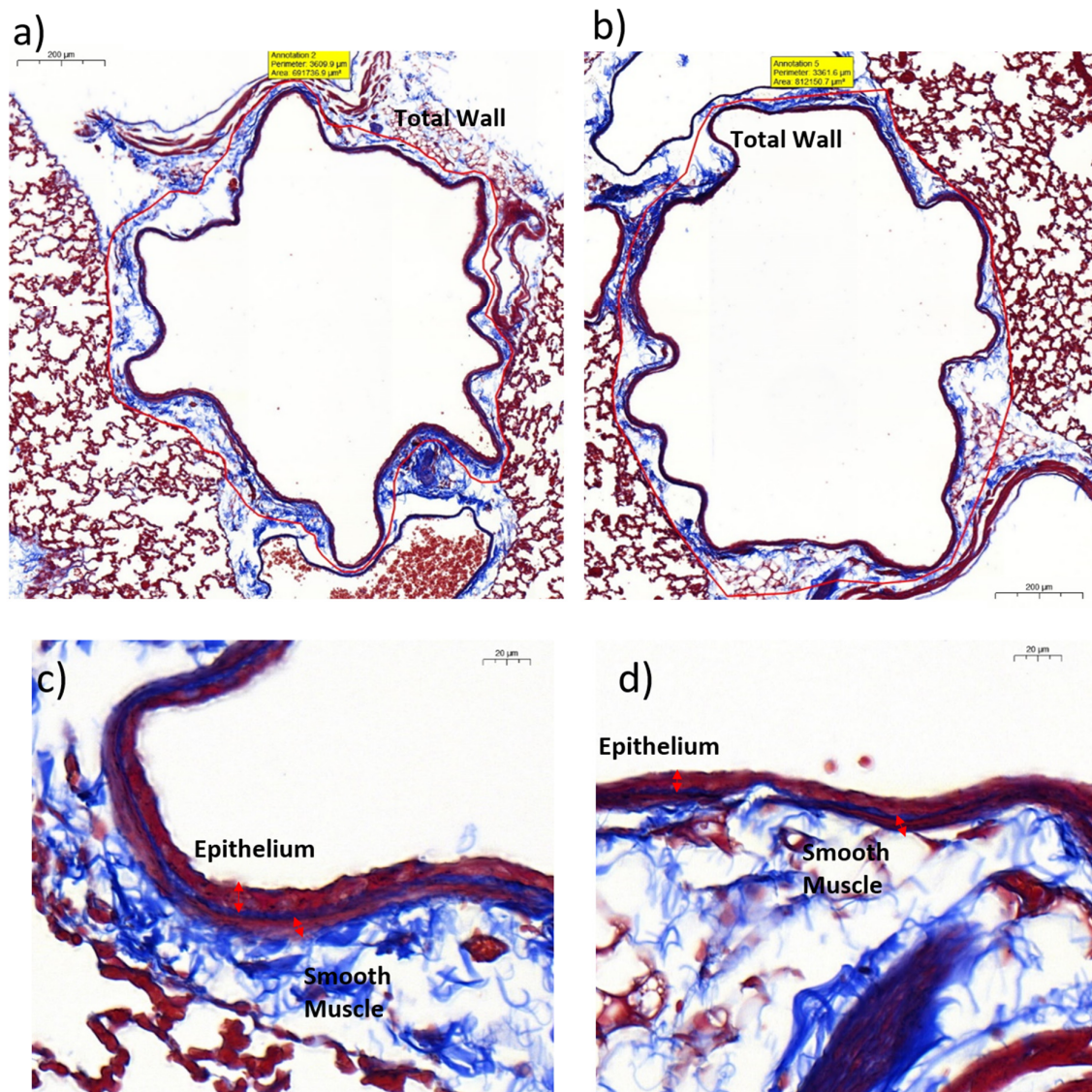


Figure S2: Representative images of airway sections stained with Masson's Trichrome. Images are taken from Air and ULSD exhaust exposed mice. (a) and (c) are whole and zoomed airway images of a representative Air exposed mouse while (b) and (d) are the same for an exhaust exposed mouse. The different airway measurements are outlined in red.