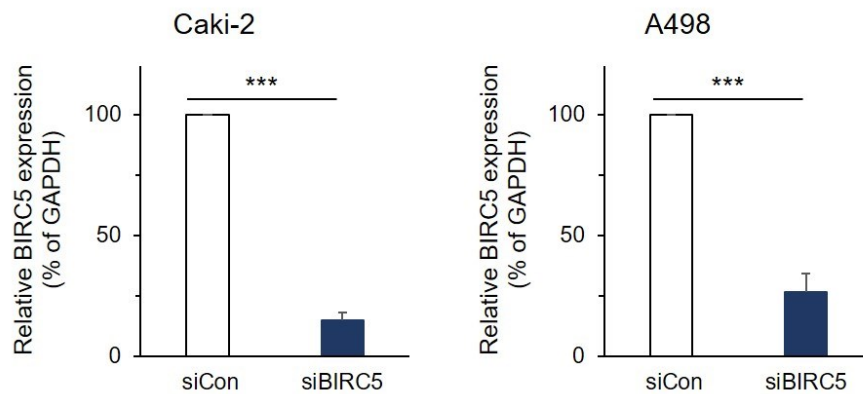


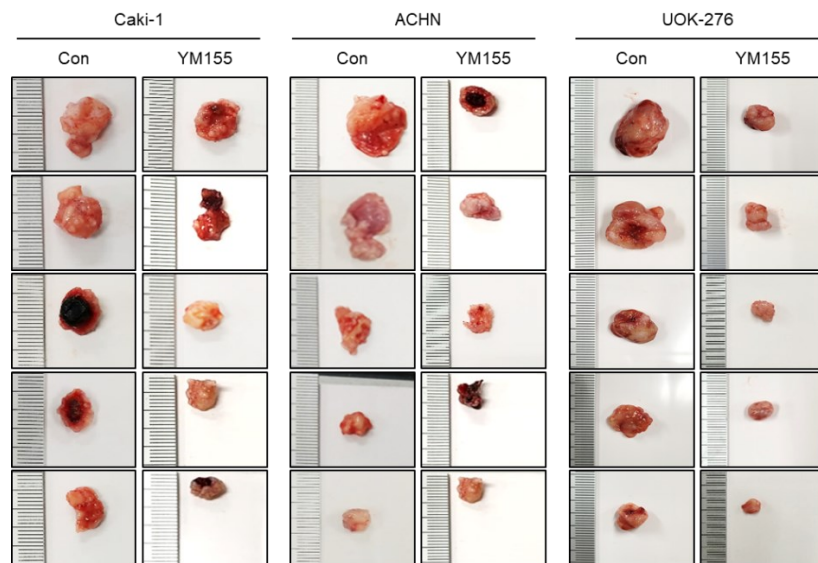
## Supplementary data

**Supplementary Table S1.** List of the primer sequences used for RT-PCR studies.

	Sequence (5'→3')
RT-GAPDH-f	GAG TCA ACG GAT TTG GTC GT
RT-GAPDH-r	TGG AAG ATG GTG ATG GGA TT
RT-BIRC5-f	GAC GAC CCC ATA GAG GAA CAT A
RT-BIRC5-r	TTT CCT TTG CAA TTT TGT TCT TG
RT-EP300-f	CGC TTT GTC TAC ACC TGC AA
RT-EP300-r	TGC TGG TTG TTG CTC TCA TC
RT-EZH2-f	GAC CTC TGT CTT ACT TGT GGA GC
RT-EZH2-r	CGT CAG ATG GTG CCA GCA ATA G
ChIP-BIRC5 promoter-f	CCA CCG CAT CTC TAC ATT CA
ChIP-BIRC5 promoter-r	TTT CCT TTG CAA TTT TGT TCT TG



**Supplementary Figure S1.** BIRC5 mRNA levels were assessed by qRT-PCR in a second ccRCC cell line, Caki-2, and a second pRCC cell line, A498, transfected with the indicated siRNAs. Results represent mean  $\pm$  SD of three independent experiments (\*\*p<0.01 compared to siCon, t-test).



**Supplementary Figure S2.** Representative images of xenografts in the control and YM155 treated groups injected with Caki-1, ACHN, and UOK-276 cells at the end of the experiment.