

Supplemental figures

FigS1:Original Western images used for preparing Figure.1E

Sample name:

Protein samples of Caco2 cells infected with 0.01moi SARS-CoV-2 at 12hpi, 24hpi and 36hpi

Target protein:

FHL2

MW:

32 KD

Lane: 4,5,6,7

Right to Left



Sample name:

Protein samples of Caco2 cells infected with 0.01moi SARS-CoV-2 at 12hpi, 24hpi and 36hpi

Target protein:

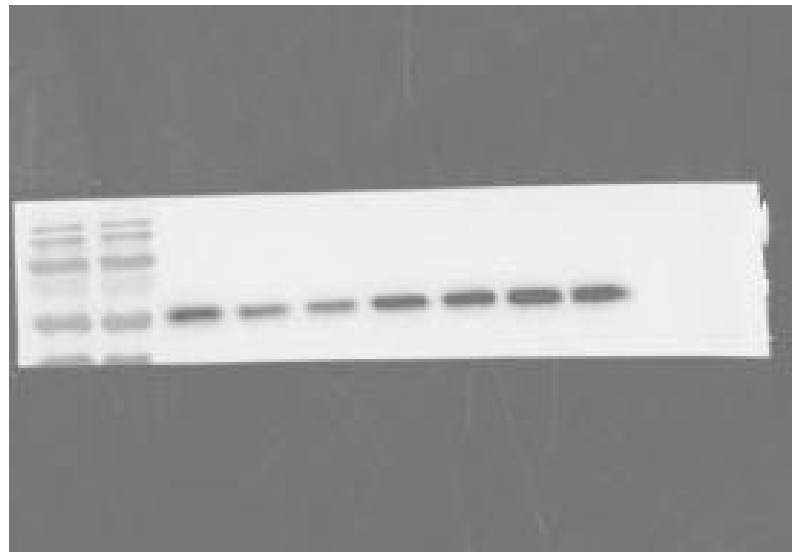
α -tubulin

MW:

50 KD

Lane: 4,5,6,7

Right to Left



FigS2:Original Western images used for preparing Figure.1G

Sample name:

Protein samples of
overexpressing FHL2 in
Caco2 cells

Target protein:

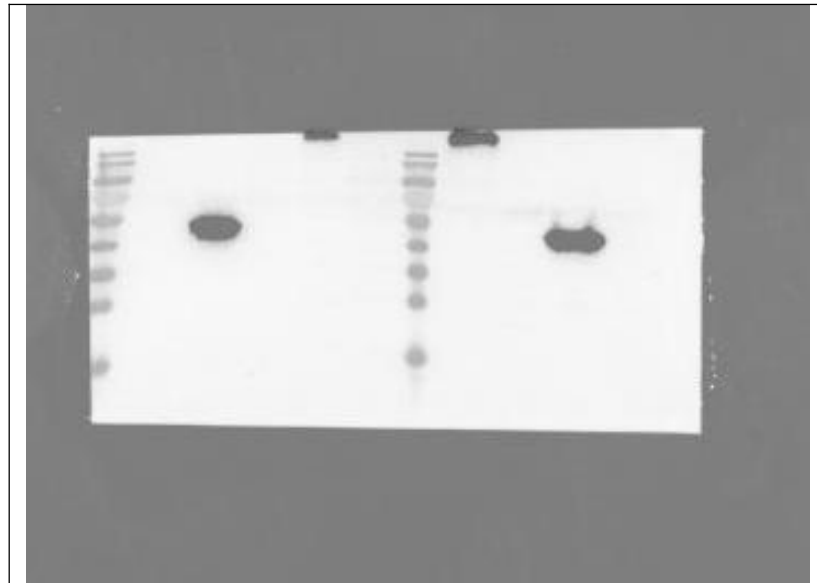
N

MW:

55 KD

Lane: 2,3

Left to Right



Sample name:

Protein samples of
overexpressing FHL2 in
Caco2 cells

Target protein:

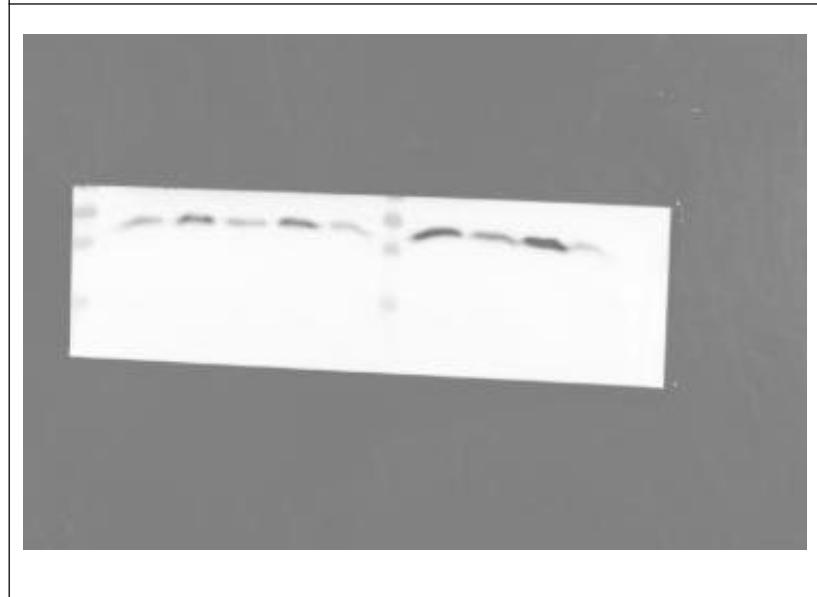
FHL2

MW:

32 KD

Lane: 2,3

Left to Right



Sample name:
Protein samples of
overexpressing FHL2 in

Caco2 cells

Target protein:

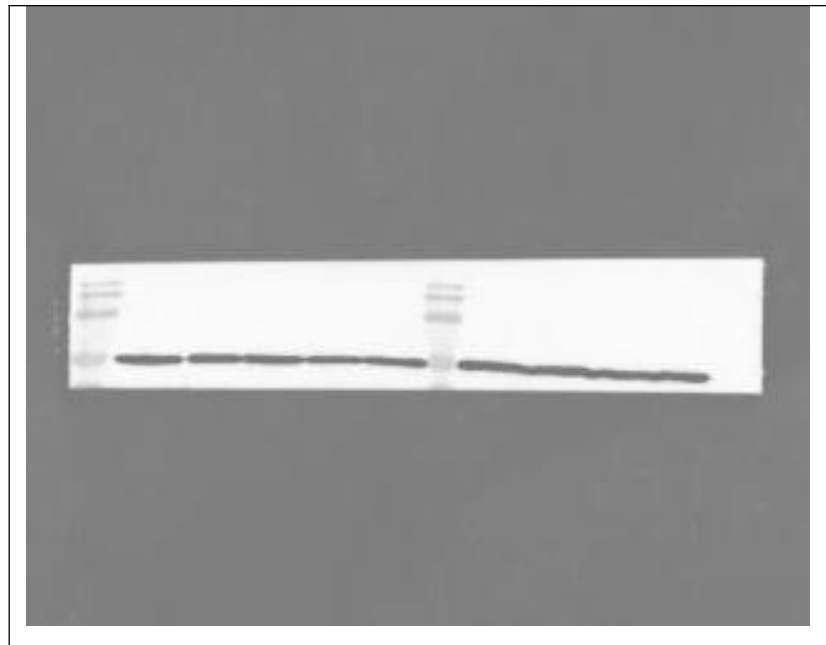
α -tubulin

MW:

50 KD

Lane: 2,3

Left to Right



FigS3:Original Western images used for preparing Figure.2A

Sample name:

Protein samples of
transfected with shRNA in

Caco2 cells

Target protein:

FHL2

MW:

32 KD



Sample name:

Protein samples of
transfected with shRNA in

Caco2 cells

Target protein:

α -tubulin

MW:

50 KD

Lane:1,2

Left to Right



FigS4:Original Western images used for preparing Figure.2B

Sample name:
Protein samples of
transfected with shRNA in
293T-ACE2 cells

Target protein:

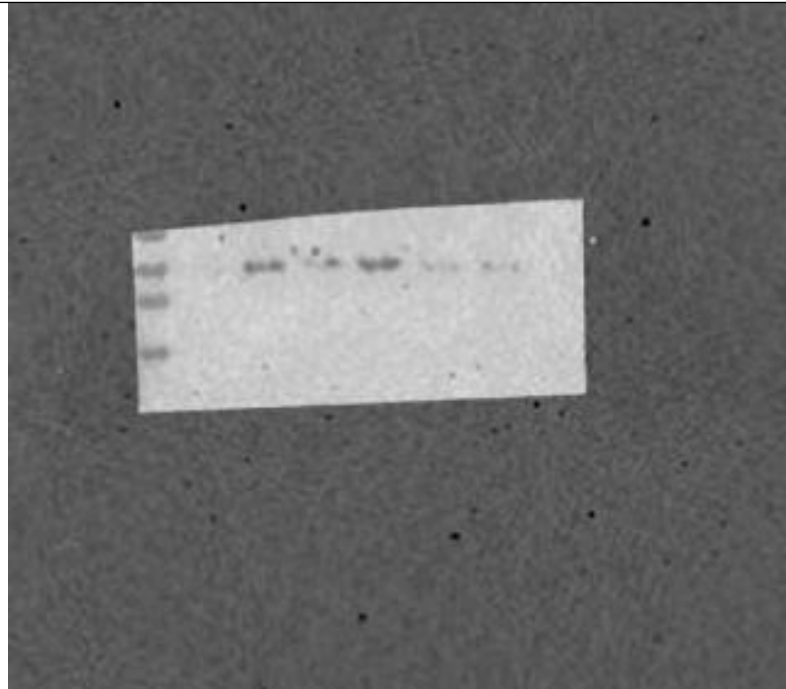
FHL2

MW:

32 KD

Lane:1,2

Left to Right



Sample name:
Protein samples of
transfected with shRNA in
293T-ACE2 cells

Target protein:

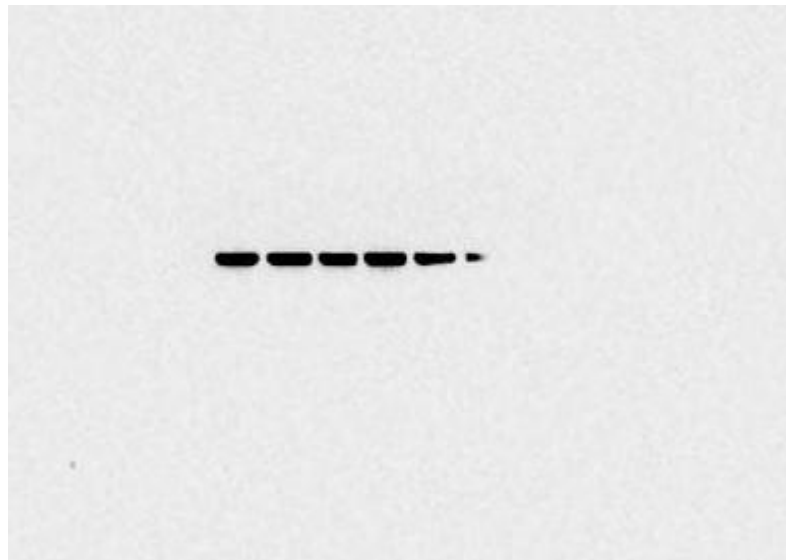
α -tubulin

MW:

50 KD

Lane:1,2

Left to Right



FigS5:Original Western images used for preparing Figure.2C

Sample name:

Protein samples of 0.01
MOI WT strain were
infected in FHL2
knockdown Caco2 cells
for 12 hours

Target protein:

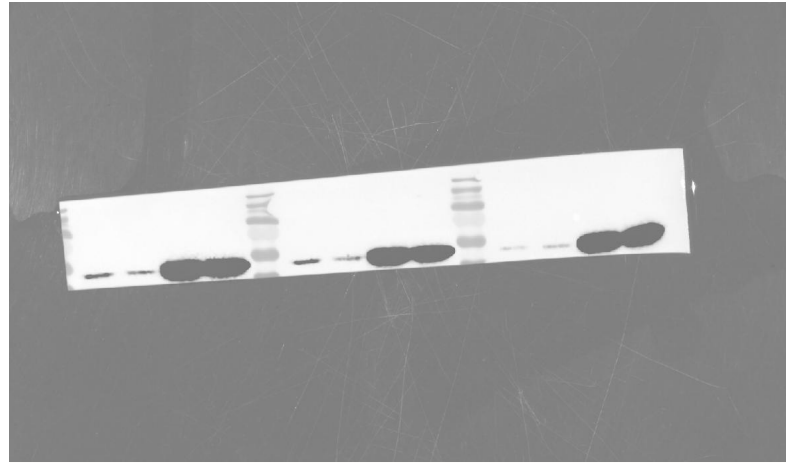
N

MW:

55 KD

Lane: 5,6

Left to Right



Sample name:

Protein samples of 0.01
MOI WT strain were
infected in FHL2
knockdown Caco2 cells
for 24 hours

Target protein:

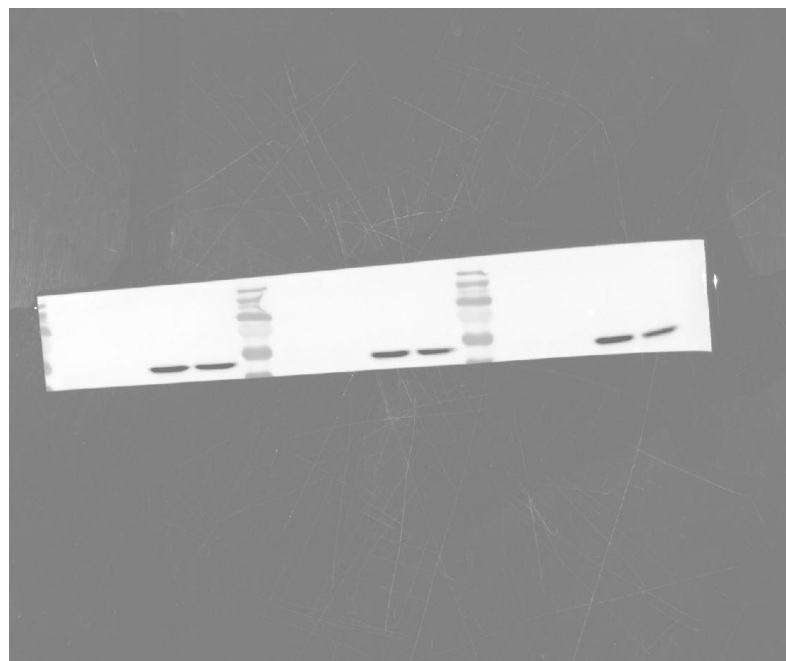
N

MW:

55 KD

Lane: 7,8

Left to Right



Sample name:

Protein samples of 0.01
MOI WT strain were
infected in FHL2
knockdown Caco2 cells
for 12 hours

Target protein:

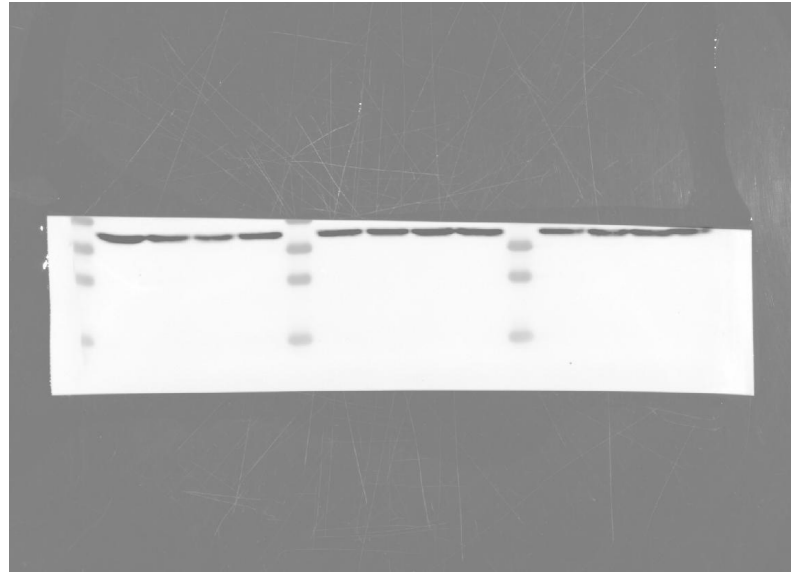
GAPDH

MW:

37 KD

Lane: 5,6

Left to Right



Sample name:

Protein samples of 0.01
MOI WT strain were
infected in FHL2
knockdown Caco2 cells
for 24 hours

Caco2 cells

Target protein:

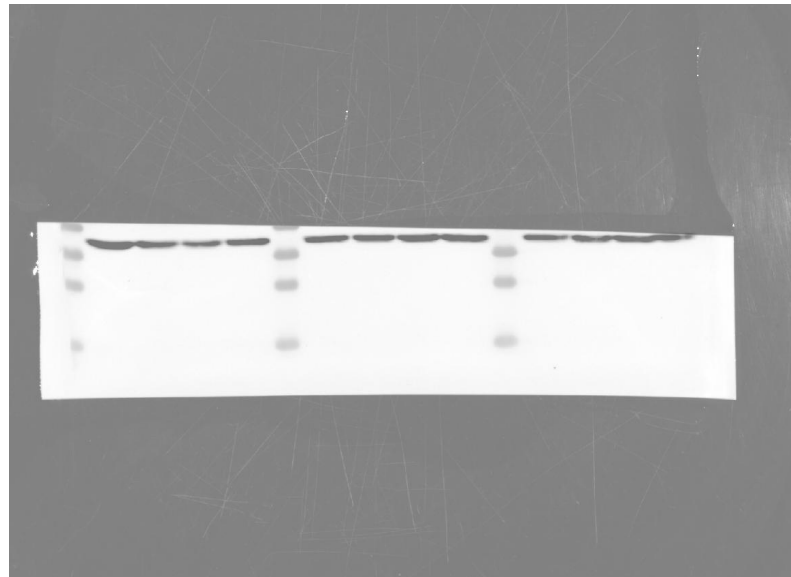
GAPDH

MW:

37 KD

Lane: 7,,8

Left to Right



Sample name:

Protein samples of 0.1
MOI WT strain were
infected in FHL2
knockdown Caco2 cells
for 12 hours

Target protein:

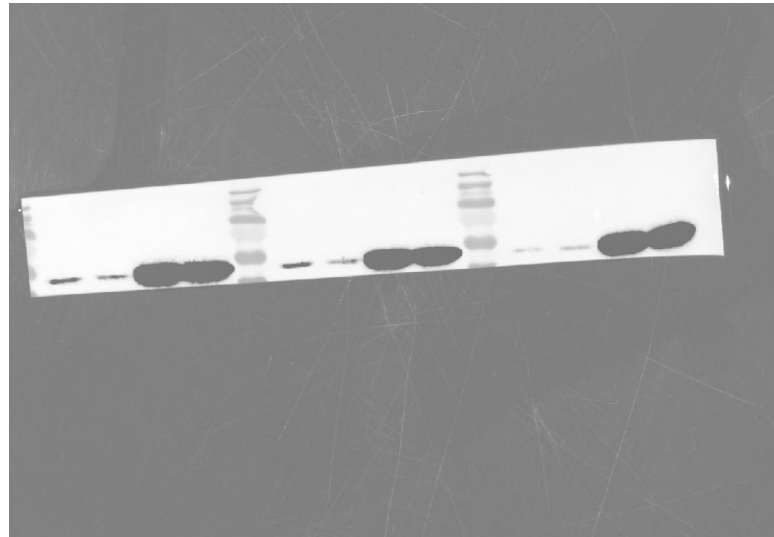
N

MW:

55 KD

Lane: 1,2

Left to Right



Sample name:

Protein samples of 0.1
MOI WT strain were
infected in FHL2
knockdown Caco2 cells
for 24 hours

Caco2 cells

Target protein:

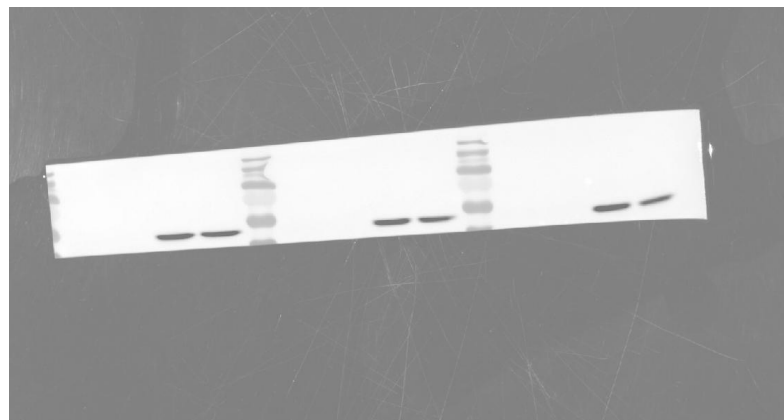
N

MW:

55 KD

Lane: 3,4

Left to Right



Sample name:

Protein samples of 0.1
MOI WT strain were
infected in FHL2
knockdown Caco2 cells
for 12 hours

Target protein:

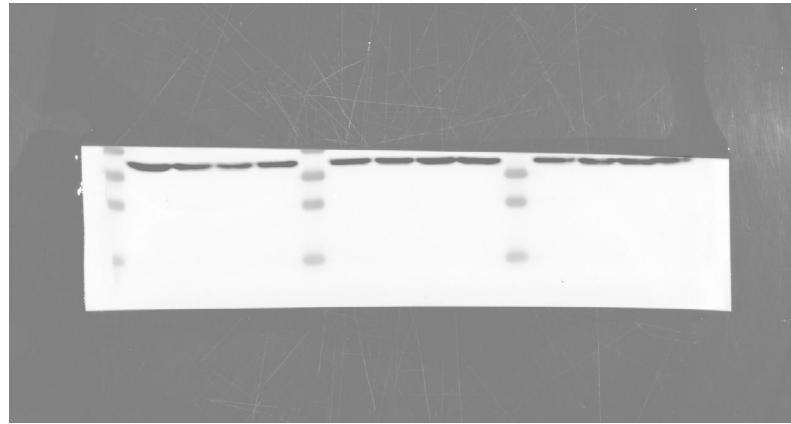
GAPDH

MW:

37 KD

Lane: 1,2

Left to Right



Sample name:

Protein samples of 0.1
MOI WT strain were
infected in FHL2
knockdown Caco2 cells
for 24 hours

Caco2 cells

Target protein:

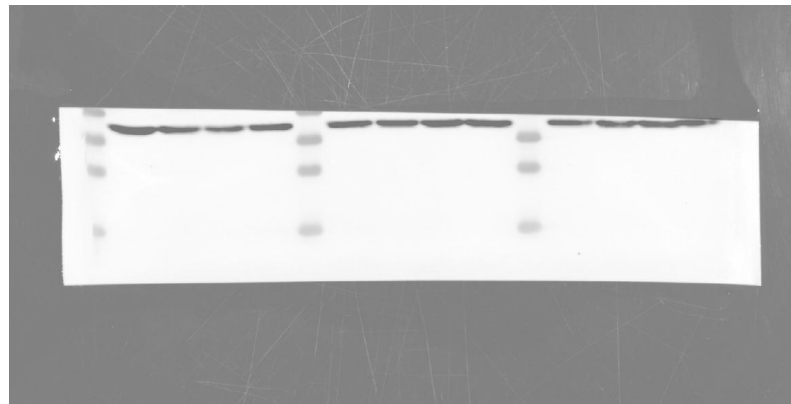
GAPDH

MW:

37 KD

Lane: 3,4

Left to Right



Sample name:

Protein samples of 0.01
MOI BA.1 strain were
infected in FHL2
knockdown Caco2 cells
for 12 hours

Target protein:

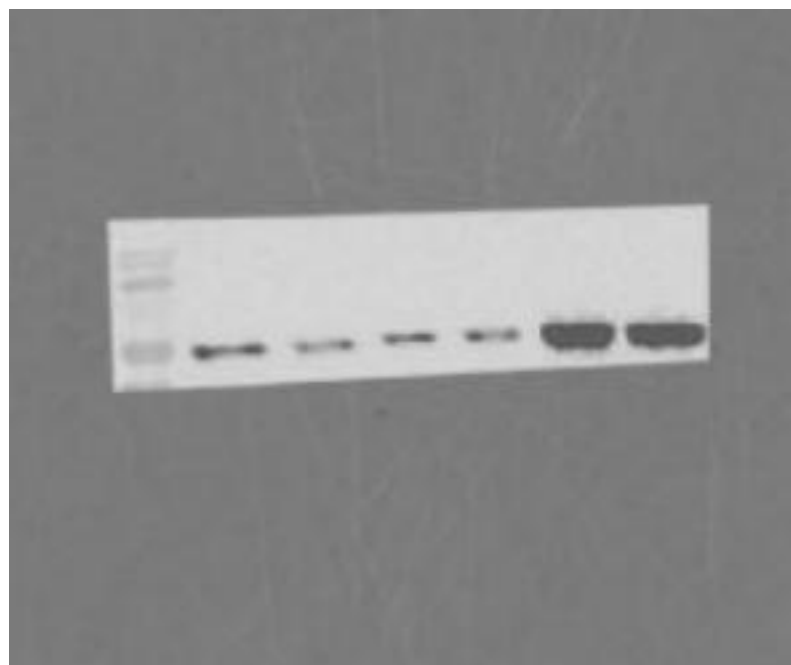
N

MW:

55 KD

Lane: 3,4

Left to Right



Sample name:

Protein samples of 0.01
MOI BA.1 strain were
infected in FHL2
knockdown Caco2 cells
for 24 hours

Target protein:

N

MW:

55 KD



Sample name:

Protein samples of 0.01
MOI BA.1 strain were
infected in FHL2
knockdown Caco2 cells
for 12 hours

Target protein:

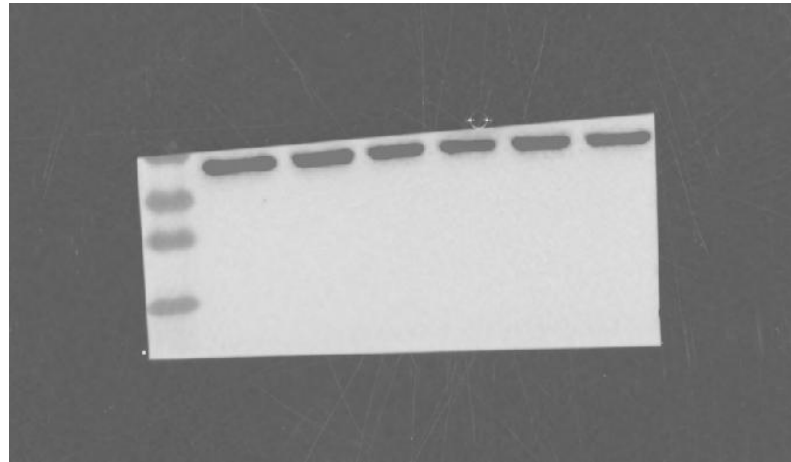
GAPDH

MW:

37 KD

Lane: 3,4

Left to Right



Sample name:

Protein samples of 0.01
MOI BA.1 strain were
infected in FHL2
knockdown Caco2 cells
for 24 hours

Target protein:

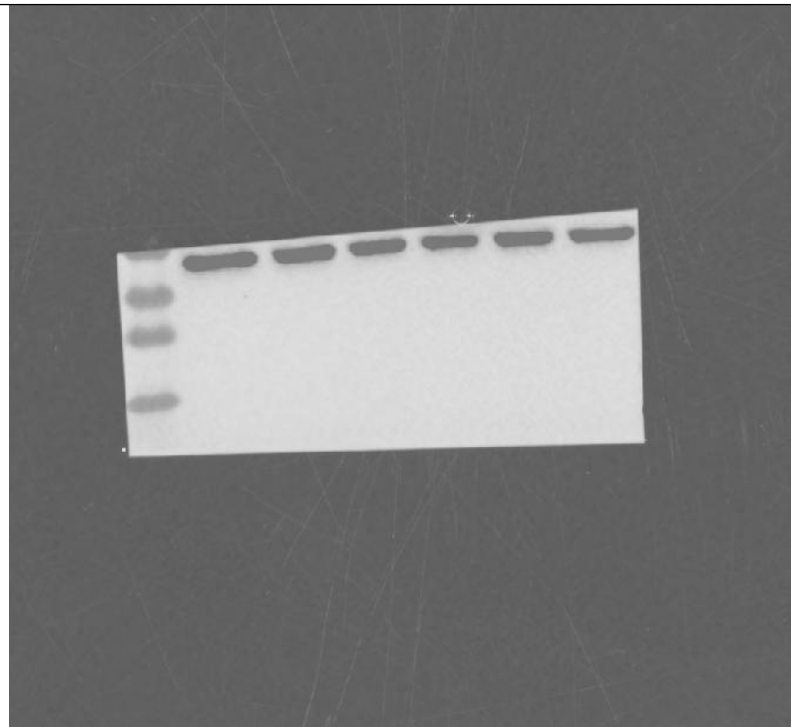
GAPDH

MW:

37 KD

Lane: 5,6

Left to Right



FigS6:Original Western images used for preparing Figure.2D

Sample name:

Protein samples of 0.01
MOI WT strain were
infected in FHL2
knockdown 293T-ACE2
cells for 12 hours

Target protein:

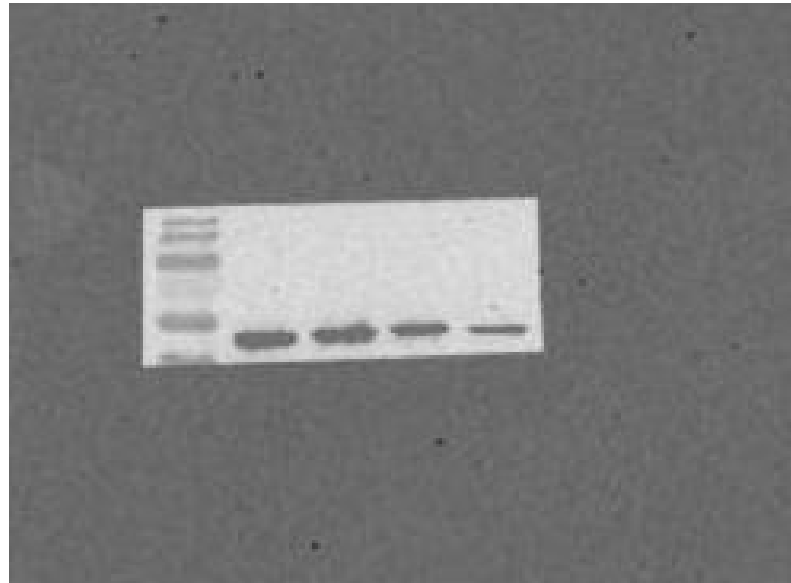
N

MW:

55 KD

Lane: 3,4

Left to Right



Sample name:

Protein samples of 0.01
MOI WT strain were
infected in FHL2
knockdown 293T-ACE2
cells for 24 hours

Target protein:

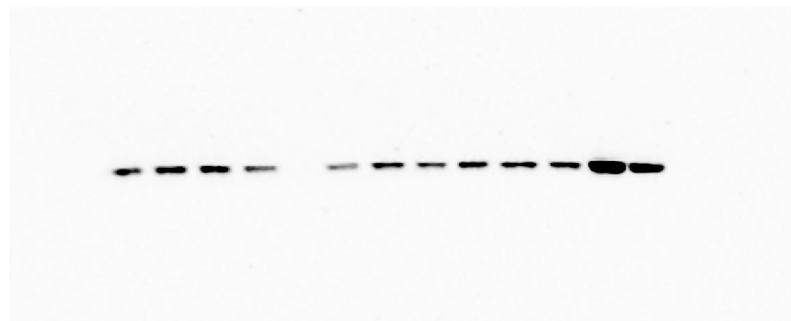
N

MW:

55 KD

Lane: 1,2

Right to Left



Sample name:

Protein samples of 0.01

MOI WT strain were

infected in FHL2

knockdown 293T-ACE2

cells for 12 hours

Target protein:

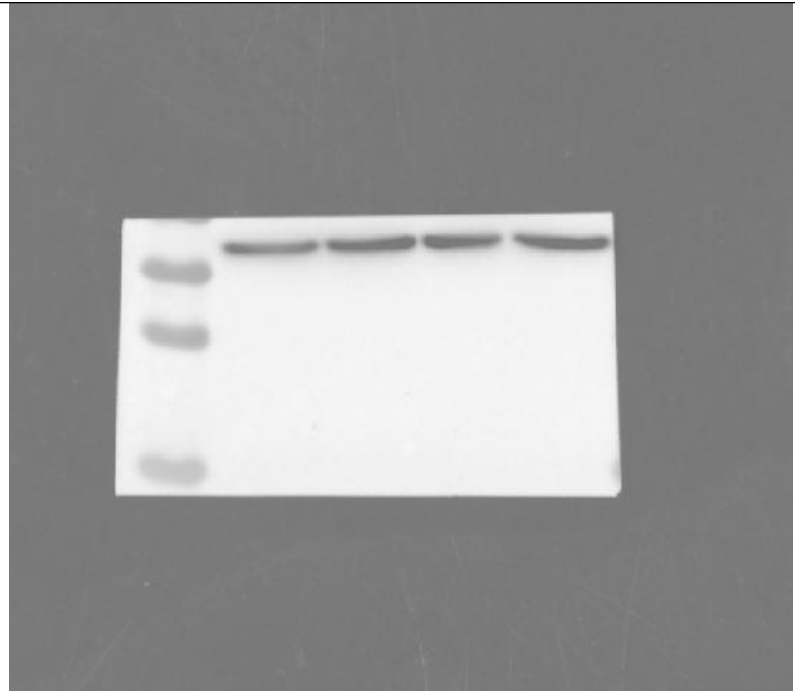
GAPDH

MW:

37 KD

Lane: 3,4

Left to Right



Sample name:

Protein samples of 0.01

MOI WT strain were

infected in FHL2

knockdown 293T-ACE2

cells for 24 hours

Target protein:

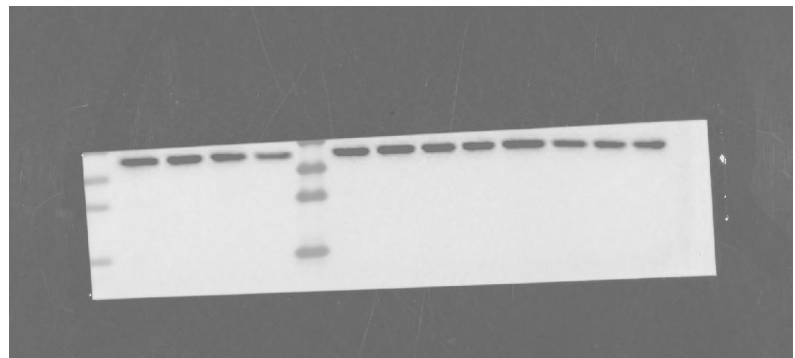
GAPDH

MW:

37 KD

Lane: 1,2

Right to Left



Sample name:

Protein samples of 0.01
MOI BA.1 strain were
infected in FHL2
knockdown 293T-ACE2
cells for 12 hours

Target protein:

N

MW:

55 KD

Lane: 1,2

Left to Right



Sample name:

Protein samples of 0.01
MOI BA.1 strain were
infected in FHL2
knockdown 293T-ACE2
cells for 24 hours

Target protein:

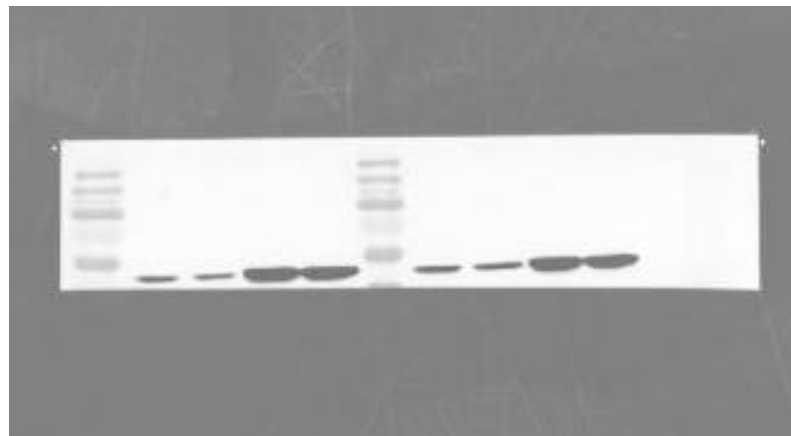
N

MW:

55 KD

Lane: 7,8

Left to Right



Sample name:

Protein samples of 0.01
MOI BA.1 strain were
infected in FHL2
knockdown 293T-ACE2
cells for 12 hours

Target protein:

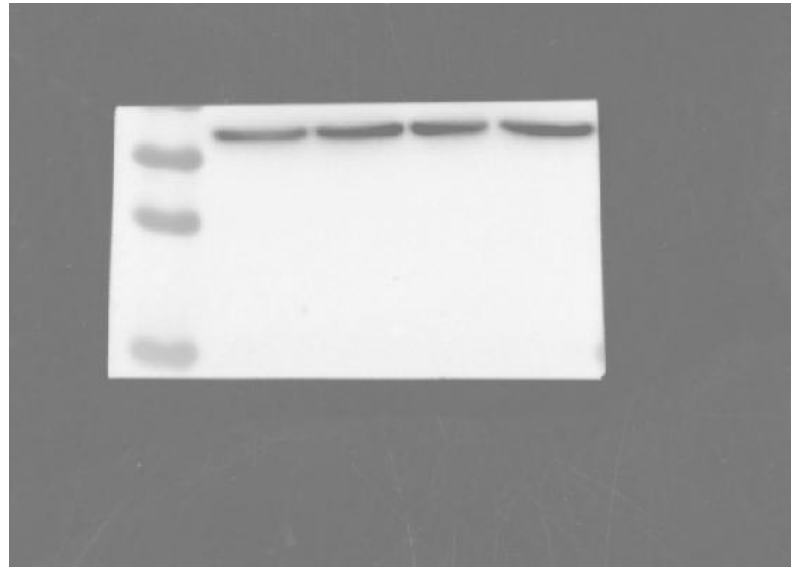
GAPDH

MW:

37 KD

Lane: 1,2

Left to Right



Sample name:

Protein samples of 0.01
MOI BA.1 strain were
infected in FHL2
knockdown 293T-ACE2
cells for 24 hours

Target protein:

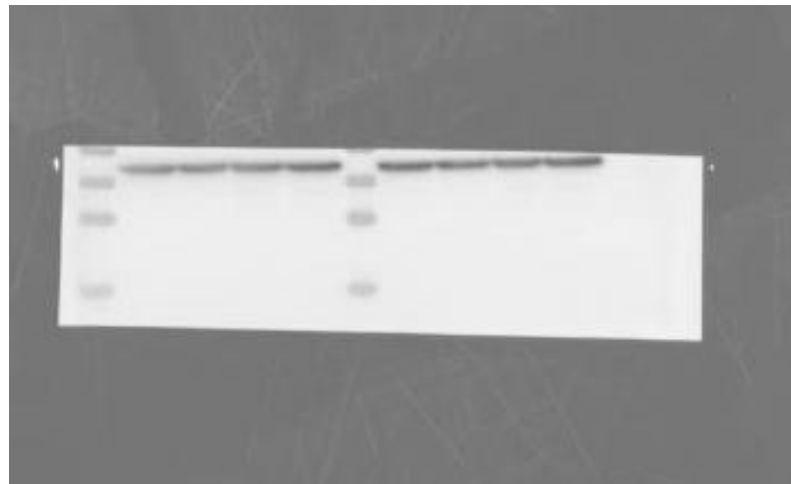
GAPDH

MW:

37 KD

Lane: 7,8

Left to Right



FigS7:Original Western images used for preparing Figure.3A

Sample name:

Protein samples of Caco2
cells transfected with
FHL2-his eukaryotic
expression plasmid

Target protein:

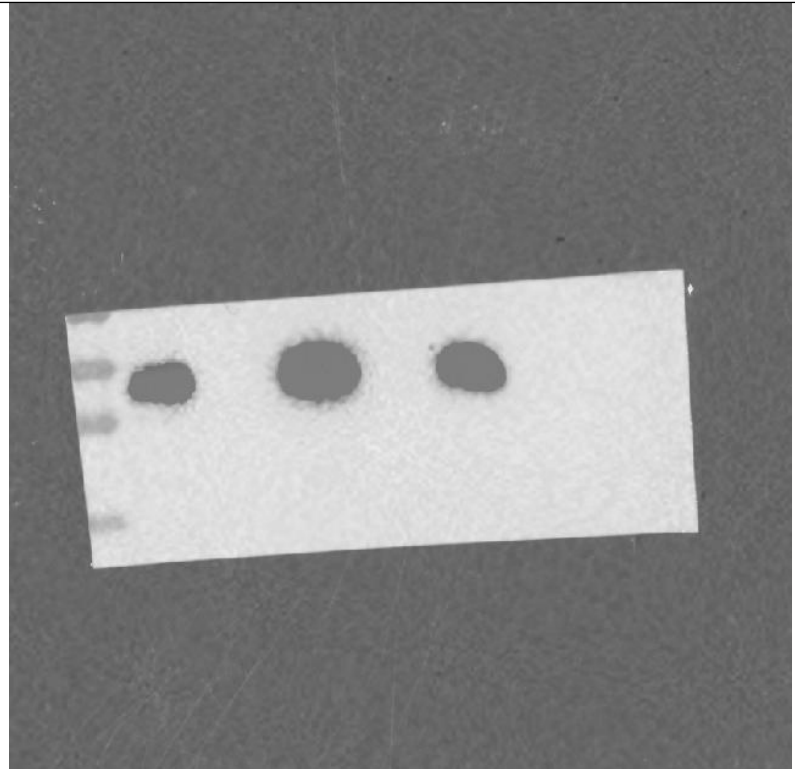
FHL2-his

MW:

32 KD

Lane: 5,6

Left to Right



Sample name:

Protein samples of Caco2
cells transfected with
FHL2-his eukaryotic
expression plasmid

Target protein:

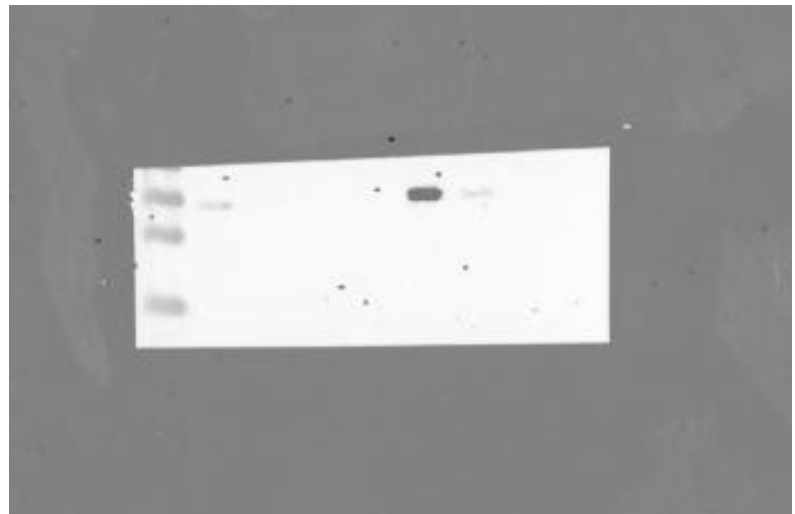
FHL2

MW:

32 KD

Lane: 5,6

Left to Right



Sample name:

Protein samples of Caco2
cells transfected with
FHL2-his eukaryotic
expression plasmid

Target protein:

α -tubulin

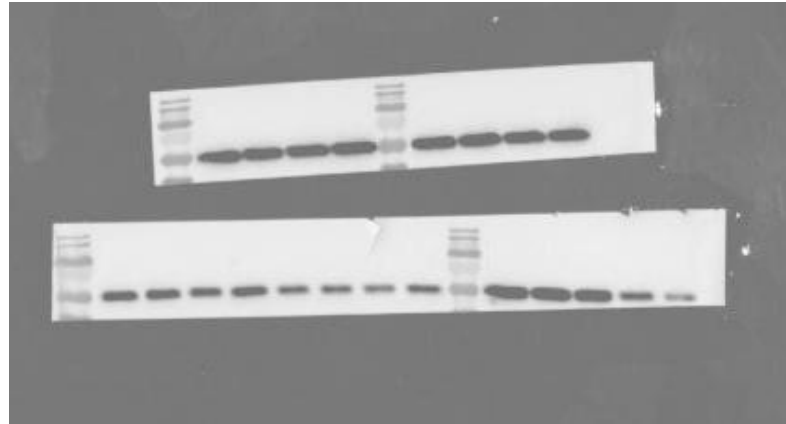
MW:

50 KD

Second row

Lane: 5,6

Left to Right



FigS8:Original Western images used for preparing Figure.3B

Sample name:

Protein samples of
293T-ACE2 cells transfected
with FHL2-his eukaryotic
expression plasmid

Target protein:

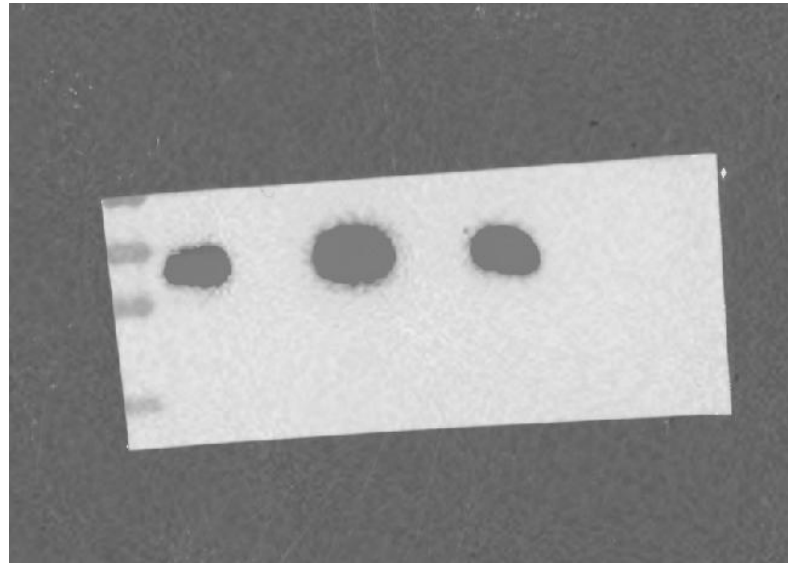
FHL2-his

MW:

32 KD

Lane: 1,2

Left to Right



Sample name:

Protein samples of
293T-ACE2 cells transfected
with FHL2-his eukaryotic
expression plasmid

Target protein:

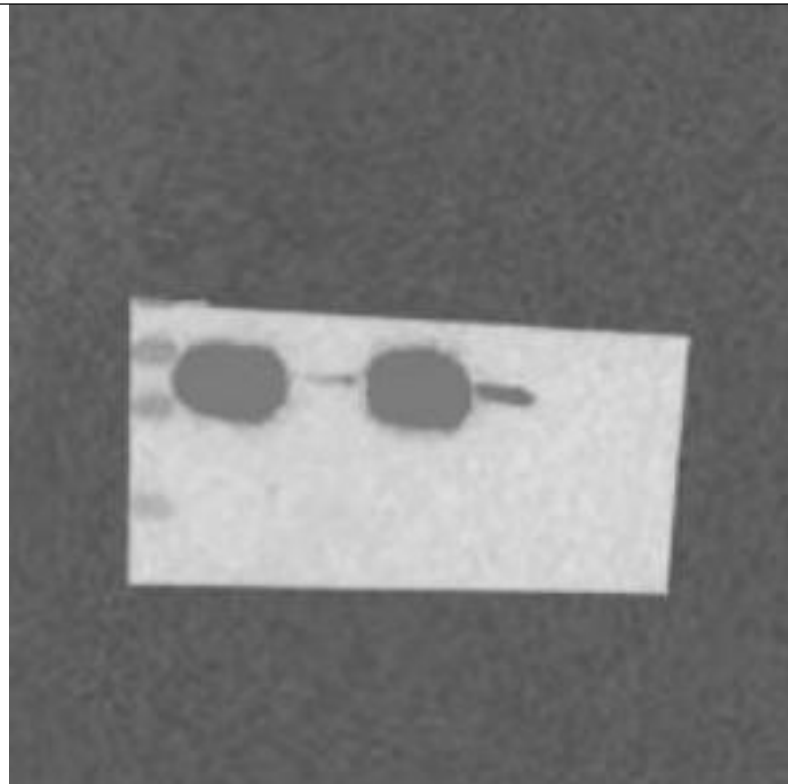
FHL2-his

MW:

32 KD

Lane: 3,4

Left to Right



Sample name:

Protein samples of
293T-ACE2 cells transfected
with FHL2-his eukaryotic
expression plasmid

Target protein:

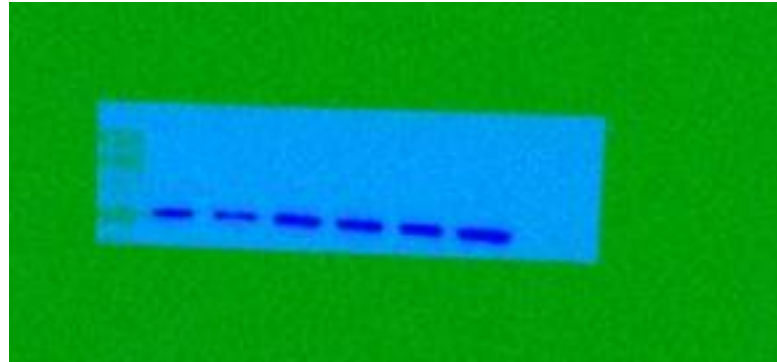
α -tubulin

MW:

50 KD

Lane: 1,2

Left to Right



Sample name:
Protein samples of
0.01MOI WT strain were
infected in FHL2
overexpressing Caco2 cells
for 12 hours

N

55 KD

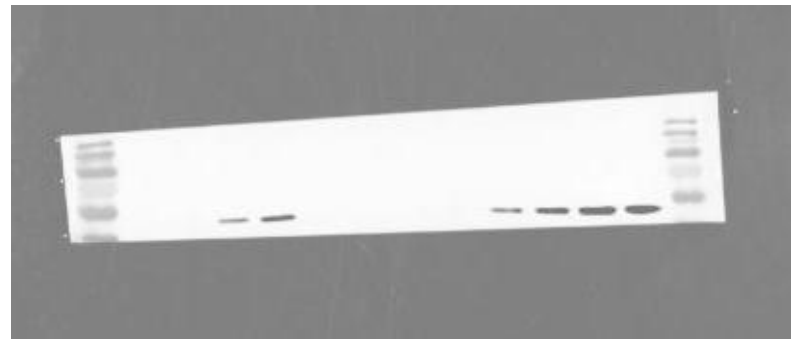
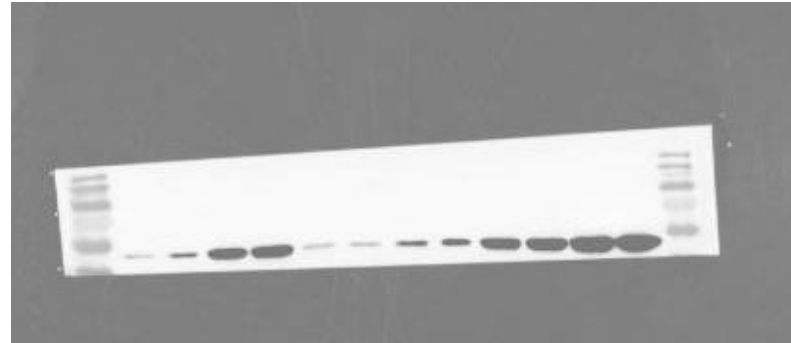
Left to Right

Protein samples of
0.01MOI WT strain were
infected in FHL2
overexpressing Caco2 cells
for 24 hours

N

55 KD

Left to Right



Sample name:

Protein samples of
0.01MOI WT strain were
infected in FHL2
overexpressing Caco2 cells
for 12 hours

Target protein:

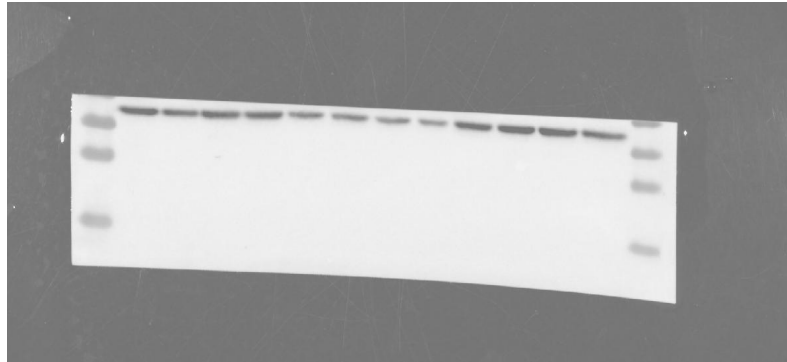
GAPDH

MW:

37 KD

Lane: 1,2

Left to Right



Sample name:

Protein samples of
0.01MOI WT strain were
infected in FHL2
overexpressing Caco2 cells
for 24 hours

Target protein:

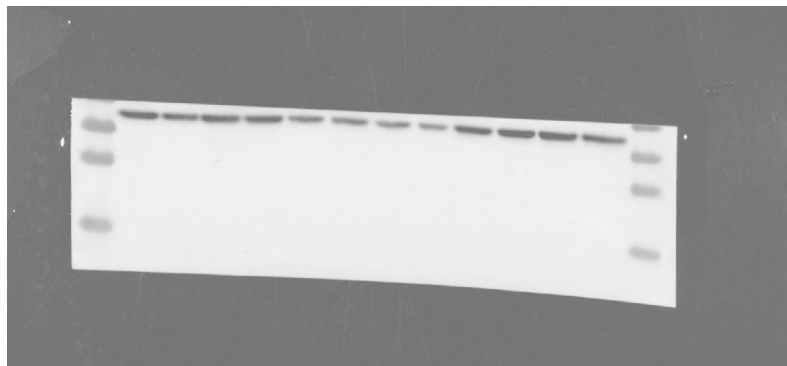
GAPDH

MW:

37 KD

Lane: 3,4

Left to Right



Sample name:

Protein samples of 0.1MOI
WT strain were infected in
FHL2 overexpressing
Caco2 cells for 12 hours

Target protein:

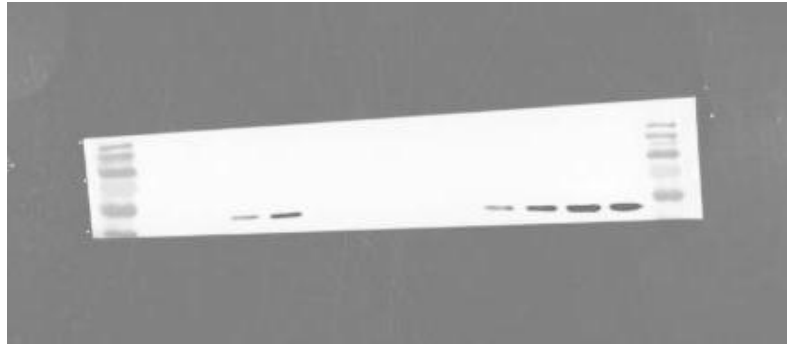
N

MW:

55 KD

Lane: 3,4

Right to Left



Sample name:

Protein samples of 0.1MOI
WT strain were infected in
FHL2 overexpressing
Caco2 cells for 24 hours

Target protein:

N

MW:

55 KD

Lane: 1,2

Right to Left



Sample name:

Protein samples of 0.1MOI
WT strain were infected in
FHL2 overexpressing
Caco2 cells for 12 hours

Target protein:

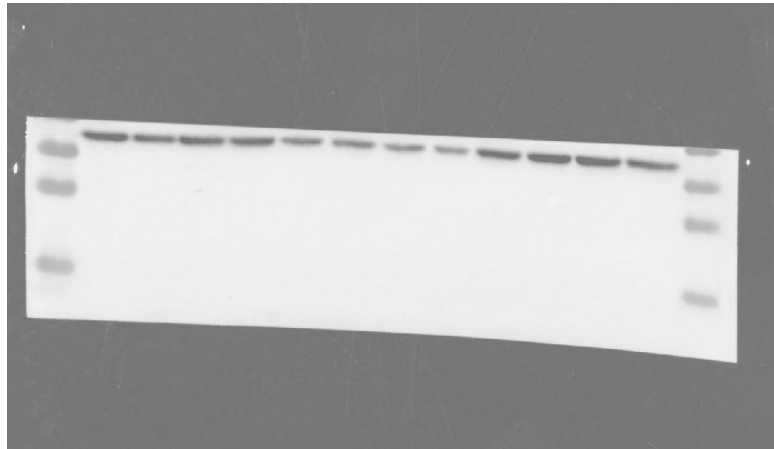
GAPDH

MW:

37 KD

Lane: 3,4

Right to Left



Sample name:

Protein samples of 0.1MOI
WT strain were infected in
FHL2 overexpressing
Caco2 cells for 24 hours

Target protein:

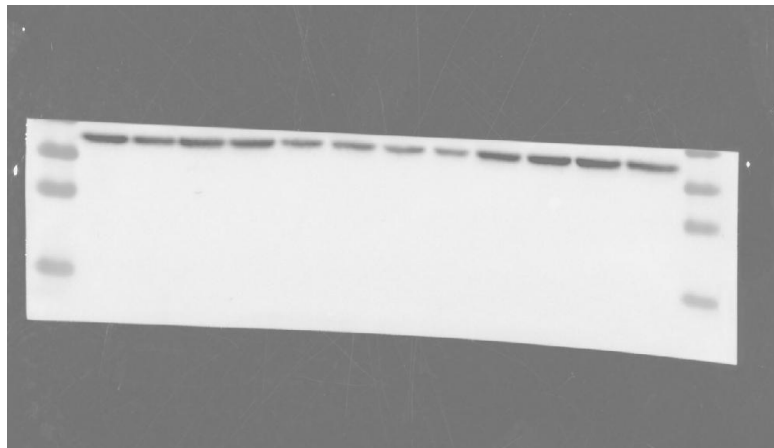
GAPDH

MW:

37 KD

Lane: 1,2

Right to Left



Sample name:

Protein samples of
0.01MOI BA.1 strain were
infected in FHL2
overexpressing Caco2 cells
for 12 hours

Target protein:

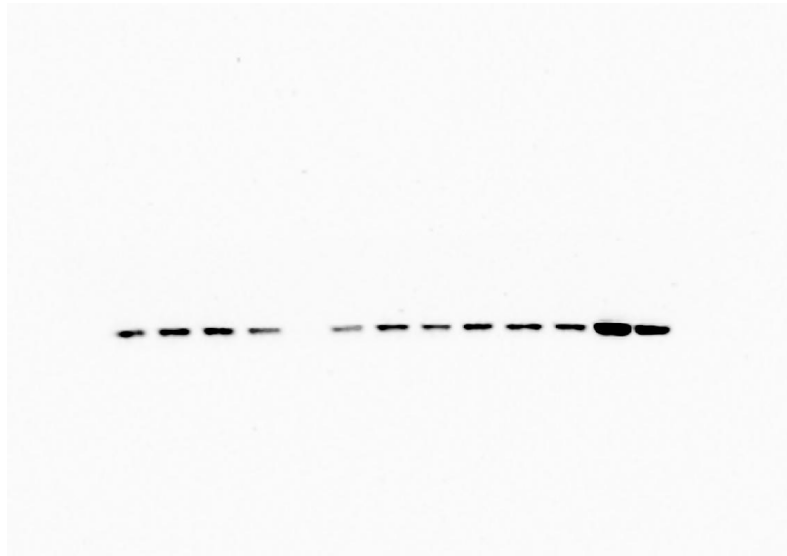
N

MW:

55 KD

Lane: 7,8

Right to Left



Sample name:

Protein samples of
0.01MOI BA.1 strain were
infected in FHL2
overexpressing Caco2 cells
for 24 hours

Target protein:

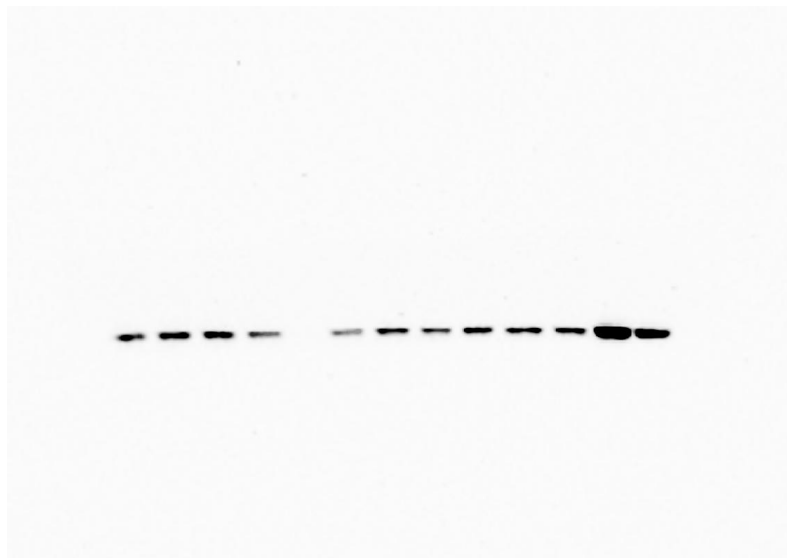
N

MW:

55 KD

Lane: 5,6

Right to Left



Sample name:

Protein samples of
0.01MOI BA.1 strain were
infected in FHL2
overexpressing Caco2 cells
for 12 hours

Target protein:

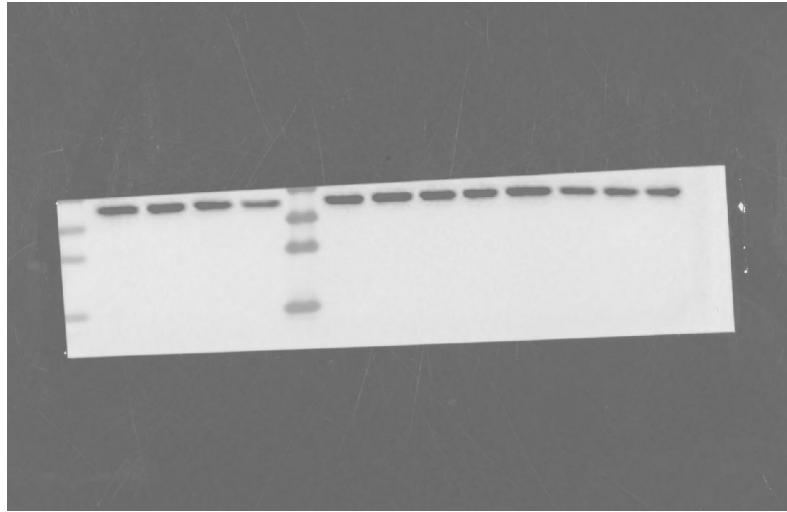
GAPDH

MW:

37 KD

Lane: 7,8

Right to Left



Sample name:

Protein samples of
0.01MOI BA.1 strain were
infected in FHL2
overexpressing Caco2 cells
for 24 hours

Target protein:

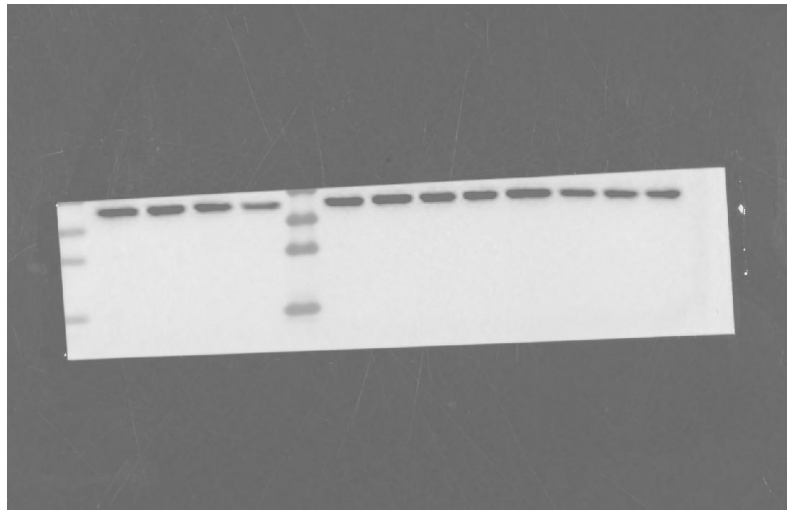
GAPDH

MW:

37 KD

Lane: 5,6

Right to Left



FigS10:Original Western images used for preparing Figure.3D

Sample name:

Protein samples of
0.01MOI WT strain were
infected in FHL2
overexpressing
293T-ACE2 cells for 12
hours

Target protein:

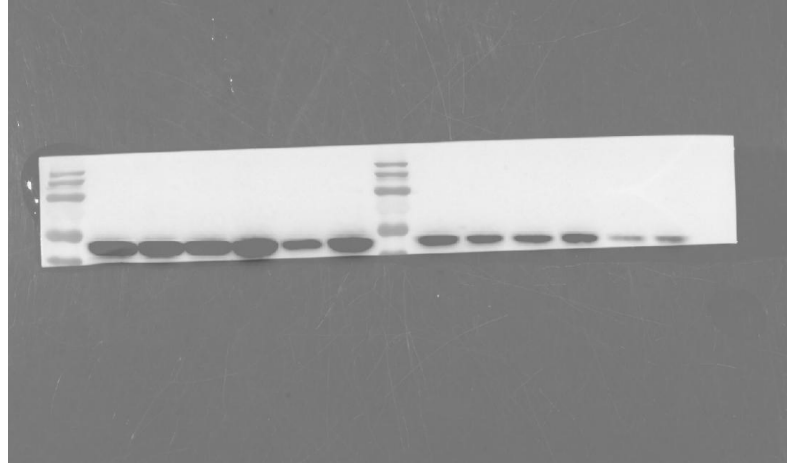
N

MW:

55 KD

Lane: 1,2

Right to Left



Sample name:

Protein samples of
0.01MOI WT strain were
infected in FHL2
overexpressing
293T-ACE2 cells for 24
hours

Target protein:

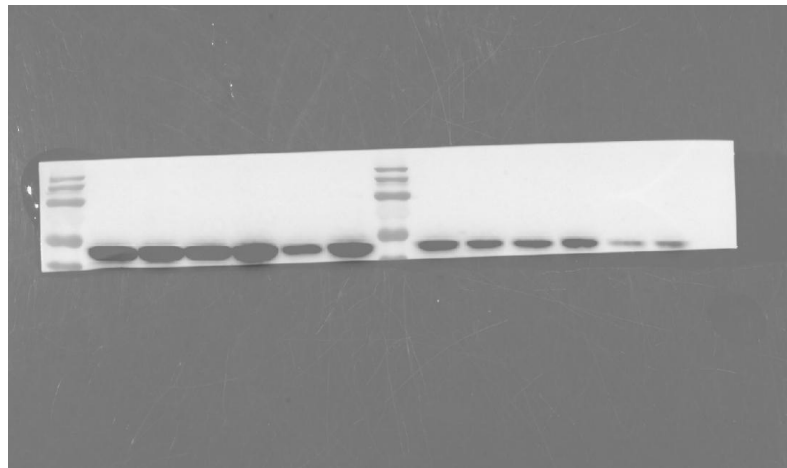
N

MW:

55 KD

Lane: 3,4

Right to Left



Sample name:

Protein samples of
0.01MOI WT strain were
infected in FHL2
overexpressing
293T-ACE2 cells for 12
hours

Target protein:

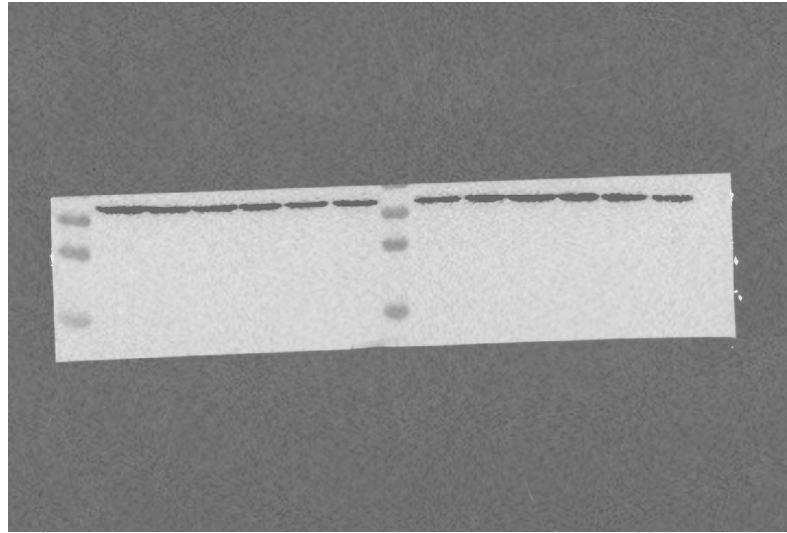
GAPDH

MW:

37 KD

Lane: 1,2

Right to Left



Sample name:

Protein samples of
0.01MOI WT strain were
infected in FHL2
overexpressing
293T-ACE2 cells for 24
hours

Target protein:

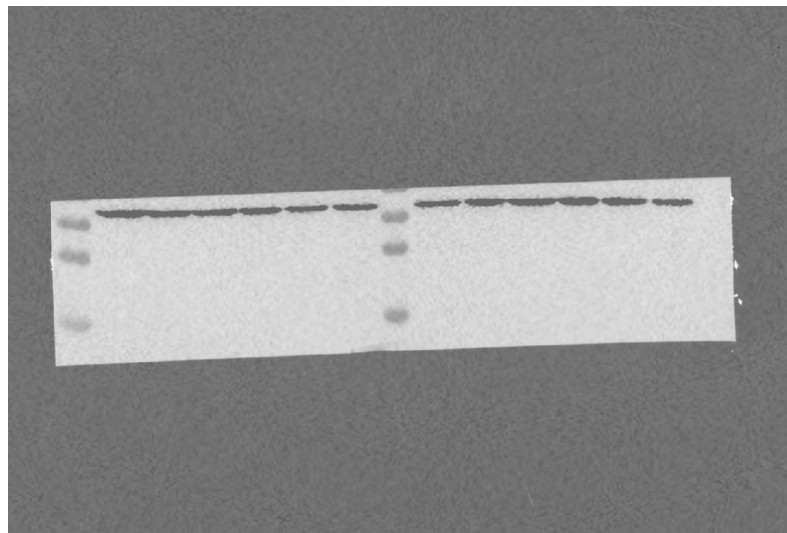
GAPDH

MW:

37 KD

Lane: 3,4

Right to Left



Sample name:

Protein samples of
0.01MOI BA.1 strain were
infected in FHL2
overexpressing
293T-ACE2 cells for 12
hours

Target protein:

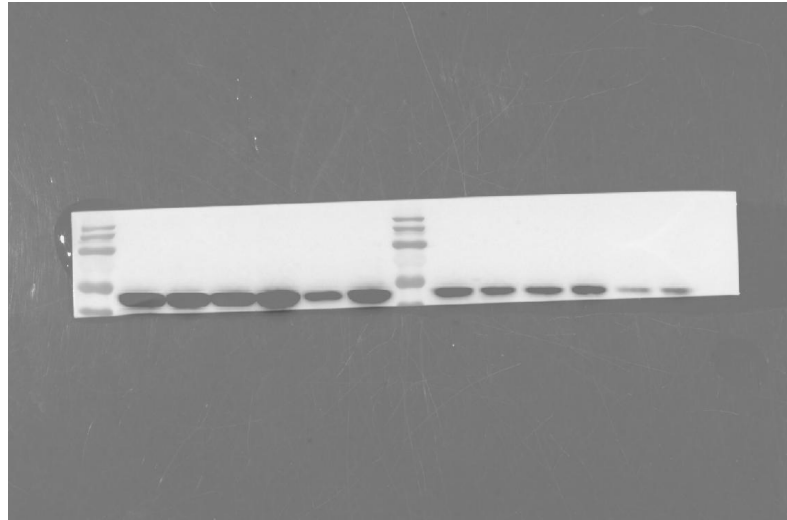
N

MW:

55 KD

Lane: 5,6

Left to Right



Sample name:

Protein samples of
0.01MOI BA.1 strain were
infected in FHL2
overexpressing
293T-ACE2 cells for 24
hours

Target protein:

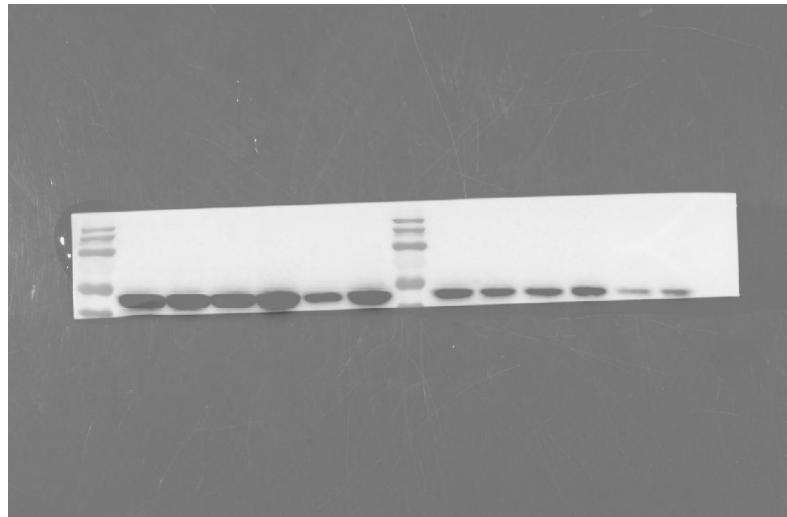
N

MW:

55 KD

Lane: 3,4

Left to Right



Sample name:

Protein samples of
0.01MOI BA.1 strain were
infected in FHL2
overexpressing
293T-ACE2 cells for 12
hours

Target protein:

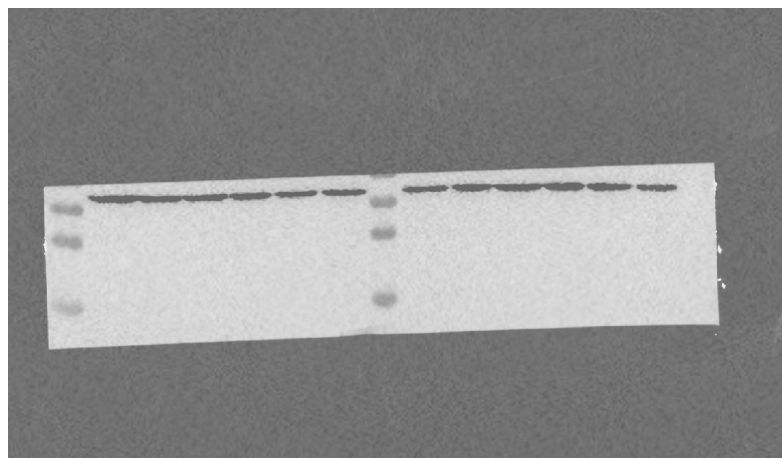
GAPDH

MW:

37 KD

Lane: 5,6

Left to Right



Sample name:

Protein samples of
0.01MOI BA.1 strain were
infected in FHL2
overexpressing
293T-ACE2 cells for 24
hours

Target protein:

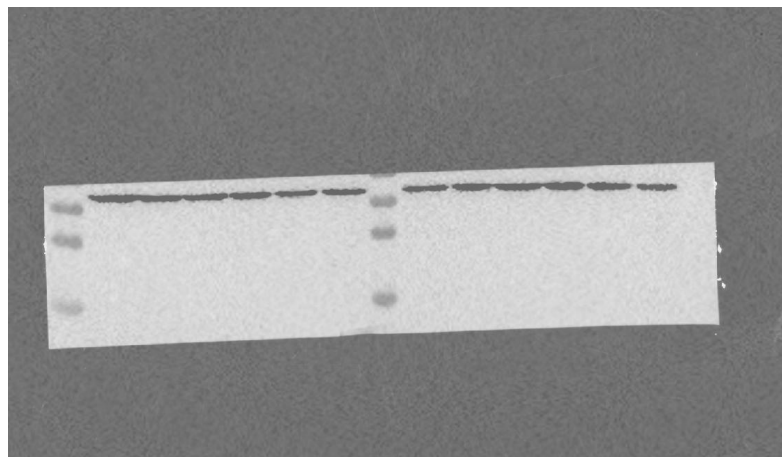
GAPDH

MW:

37 KD

Lane: 3,4

Left to Right



FigS11:Original Western images used for preparing Figure.3E

Sample name:

Protein samples of Caco2
cells transfected with
FHL2-his eukaryotic
expression plasmid (2 μ g,
1 μ g, 0.5 μ g, 0 μ g)

Target protein:

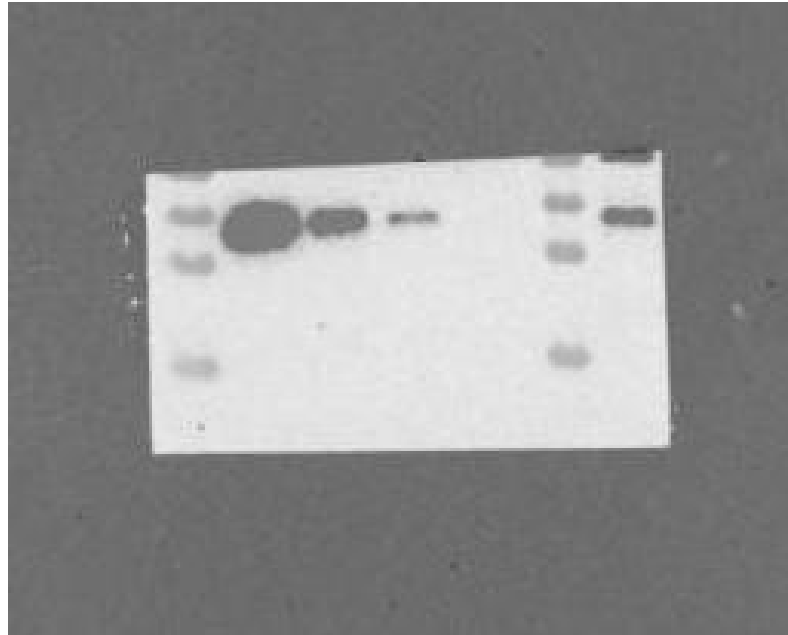
FHL2-his

MW:

32 KD

Lane: 1,2,3,4

Left to Right



Sample name:

Protein samples of Caco2
cells transfected with
FHL2-his eukaryotic
expression plasmid (2 μ g,
1 μ g, 0.5 μ g, 0 μ g)

Target protein:

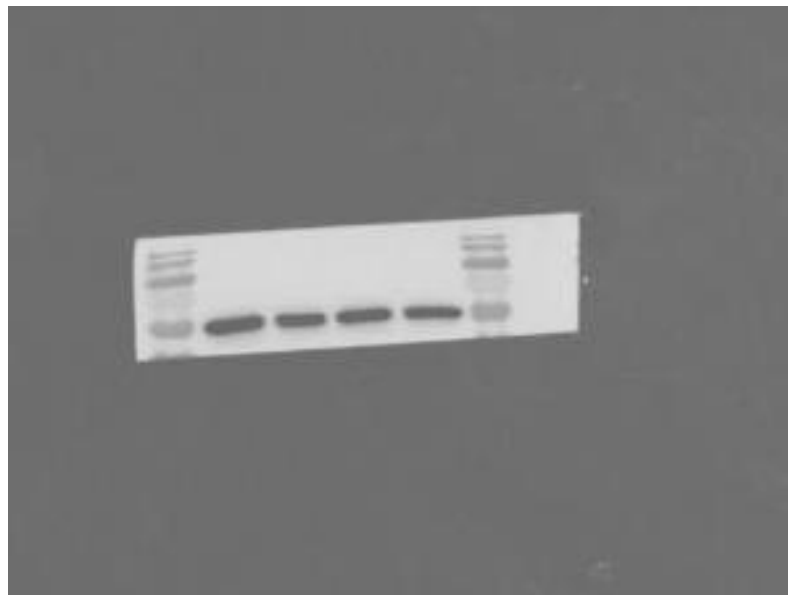
α -tubulin

MW:

50 KD

Lane: 1,2,3,4

Left to Right



Sample name:

Protein samples of
0.01MOI WT strain were
infected in FHL2
overexpressing
293T-ACE2 cells for 12
hours

Target protein:

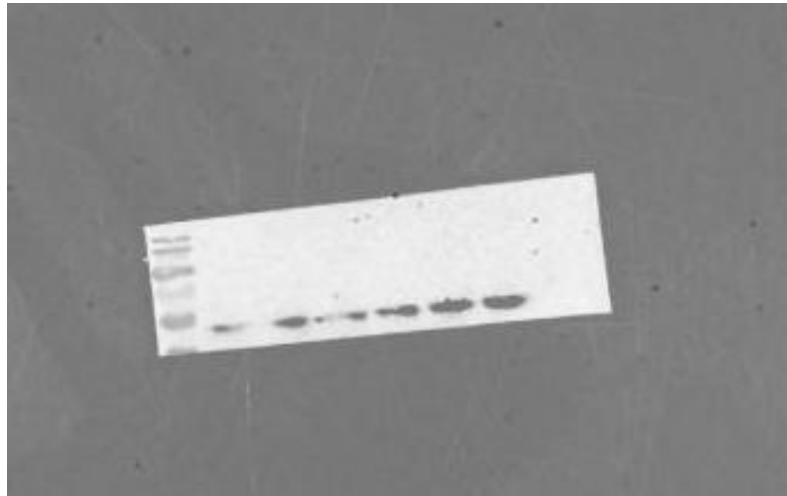
N

MW:

55 KD

Lane: 3,4,5,6

Left to Right



Sample name:

Protein samples of 0.1MOI
WT strain were infected in
FHL2 overexpressing
Caco2 cells for 12 hours

Target protein:

GAPDH

MW:

37 KD

Lane: 3,4,5,6

Left to Right



FigS12:Original Western images used for preparing Figure.5A

Sample name:

Protein samples of
transfected with shRNA in
Caco2 cells

Target protein:

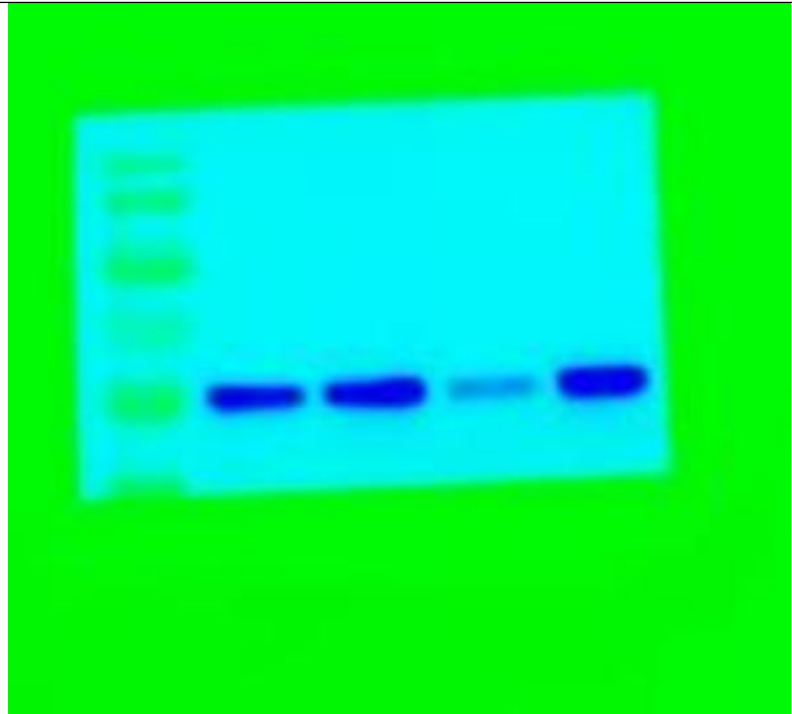
IRF-3

MW:

55 KD

Lane: 3,4

Left to Right



Sample name:

Protein samples of
transfected with shRNA in
Caco2 cells

Target protein:

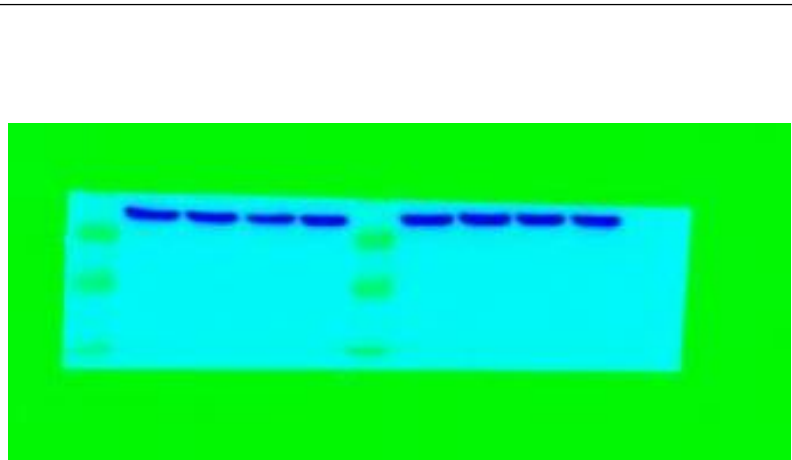
GAPDH

MW:

37 KD

Lane: 3,4

Left to Right



FigS13:Original Western images used for preparing Figure.5C

Sample name:

Protein samples of Caco2
cells transfected with
FHL2-his eukaryotic
expression plasmid

Target protein:

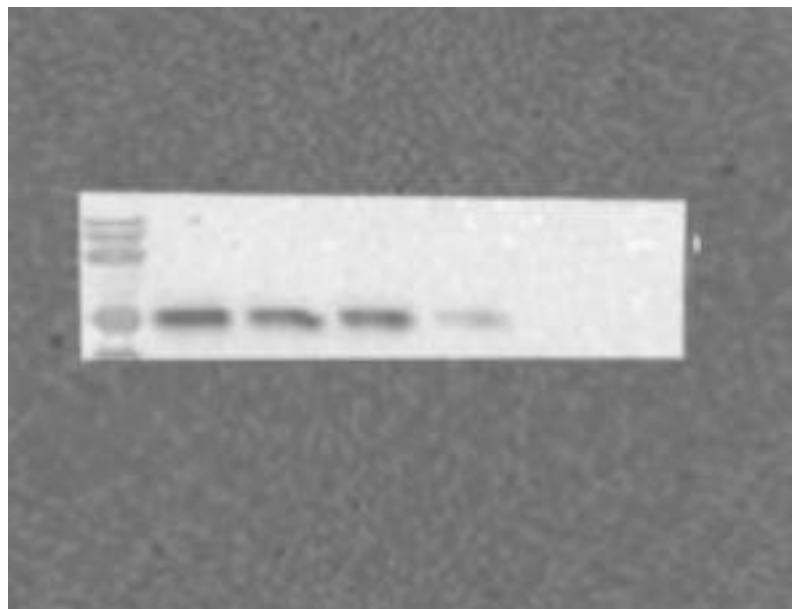
IRF-3

MW:

55 KD

Lane: 3,4

Left to Right



Sample name:

Protein samples of Caco2
cells transfected with
FHL2-his eukaryotic
expression plasmid

Target protein:

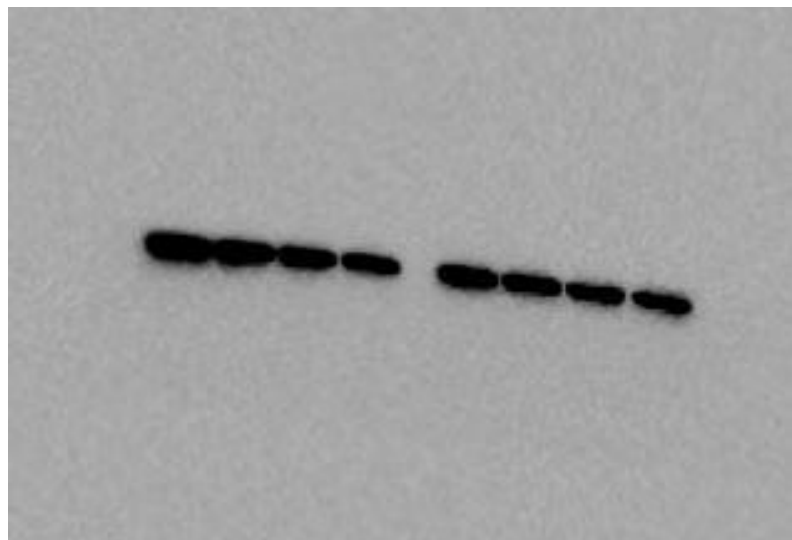
GAPDH

MW:

37 KD

Lane: 7,8

Left to Right



FigS14:Original Western images used for preparing Figure.5E

Sample name:

Protein samples of FHL2
overexpressing Caco2
cells stimulated by RNA
(Nuclei)

Target protein:

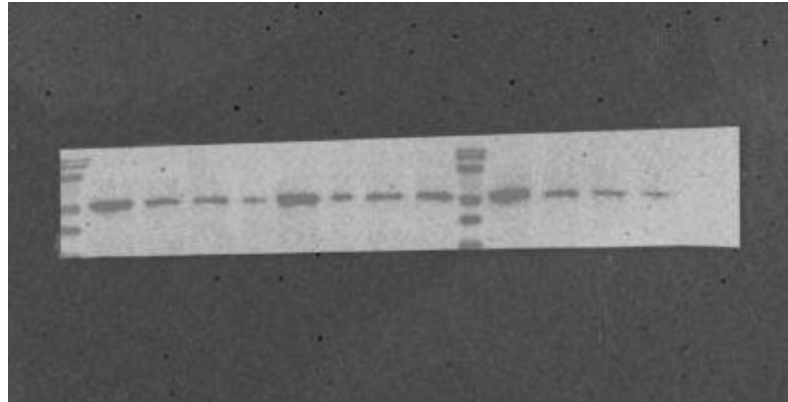
IRF-3

MW:

55 KD

Lane: 9,10,11,12

Left to Right



Sample name:

Protein samples of FHL2
overexpressing Caco2
cells stimulated by RNA
(Nuclei)

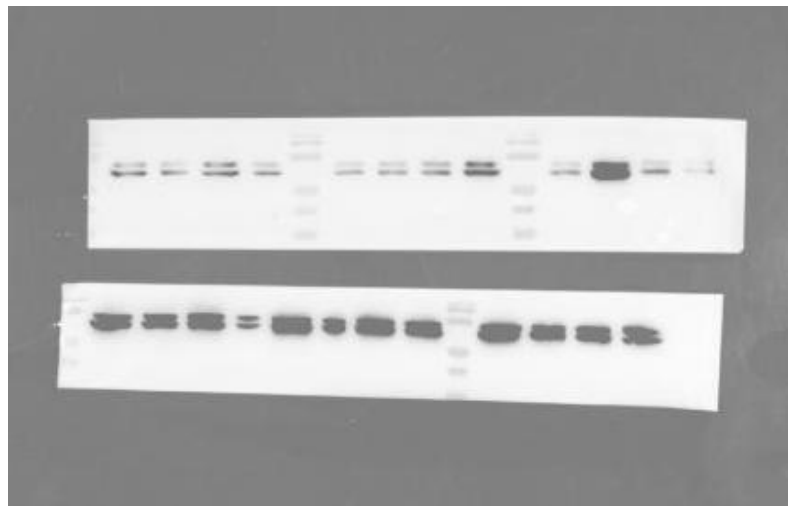
Target protein:

Lamin A/C

Second row

Lane: 9,10,11,12

Left to Right



Sample name:

Protein samples of FHL2
overexpressing Caco2
cells stimulated by RNA
(Cyto)

Target protein:

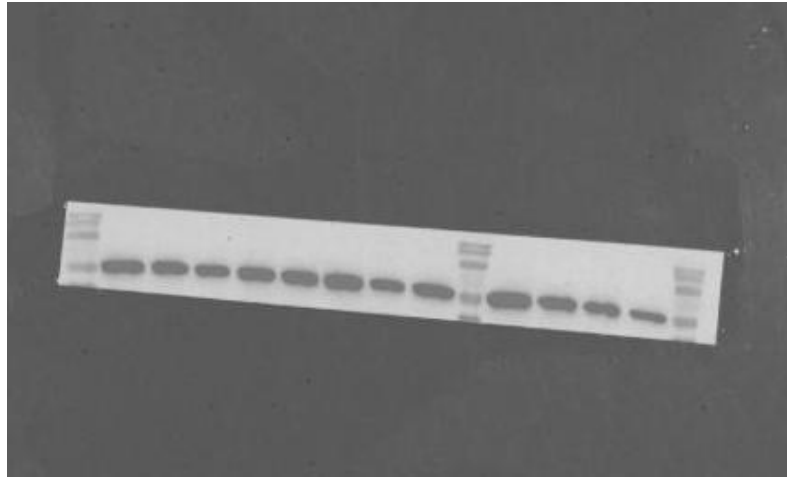
IRF-3

MW:

55 KD

Lane: 9,10,11,12

Left to Right



Sample name:

Protein samples of FHL2
overexpressing Caco2
cells stimulated by RNA
(Cyto)

Target protein:

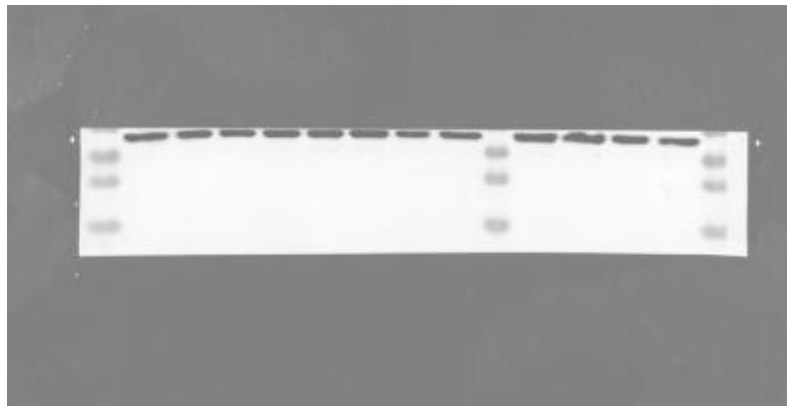
GAPDH

MW:

37 KD

Lane: 9,10,11,12

Left to Right



Sample name:

Protein samples of FHL2
overexpressing Caco2
cells stimulated by RNA
(Total)

Target protein:

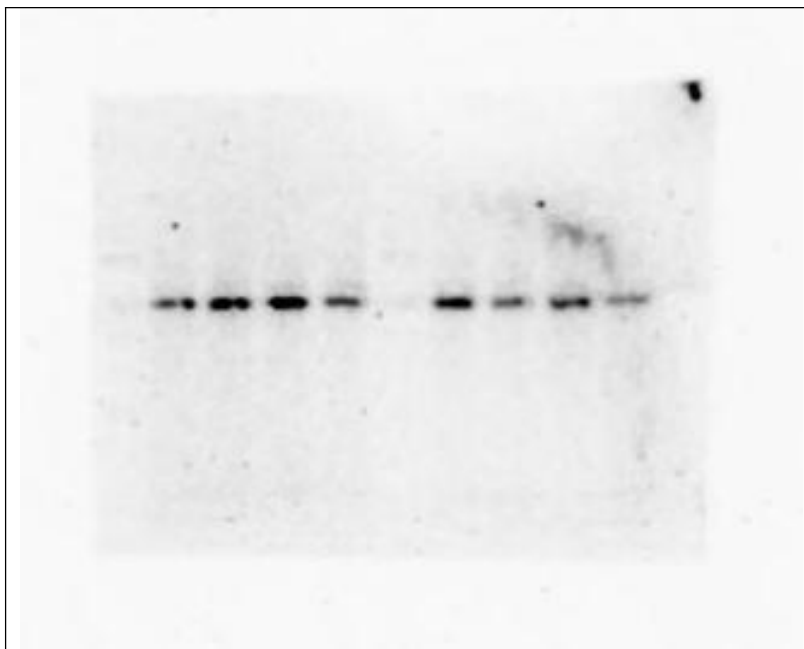
IRF-3

MW:

55 KD

Lane: 5,6,7,8

Left to Right



Sample name:

Protein samples of FHL2
overexpressing Caco2
cells stimulated by RNA
(Total)

Target protein:

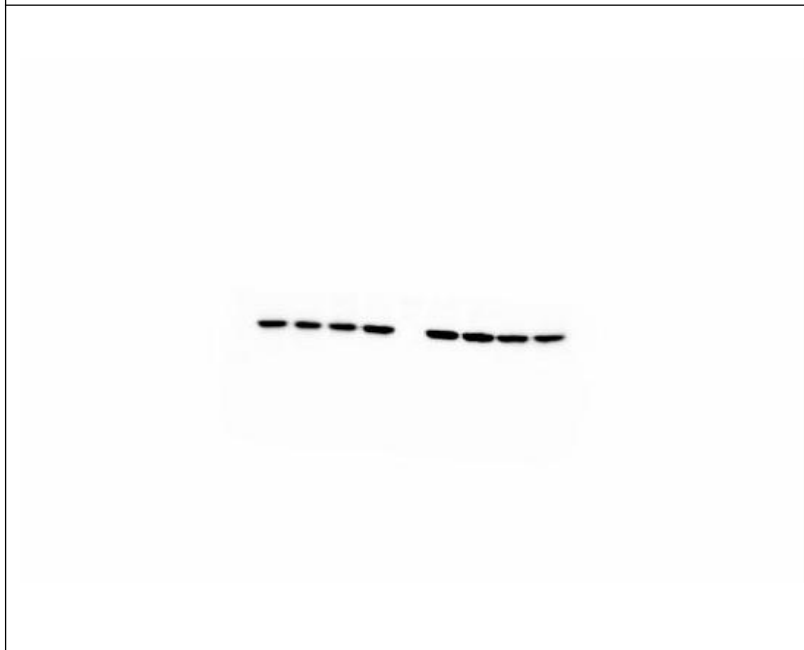
GAPDH

MW:

37 KD

Lane: 5,6,7,8

Left to Right



FigS15:Original Western images used for preparing Figure.5F

Sample name:

Protein samples of FHL2
overexpressing Caco2
cells stimulated by virus

Target protein:

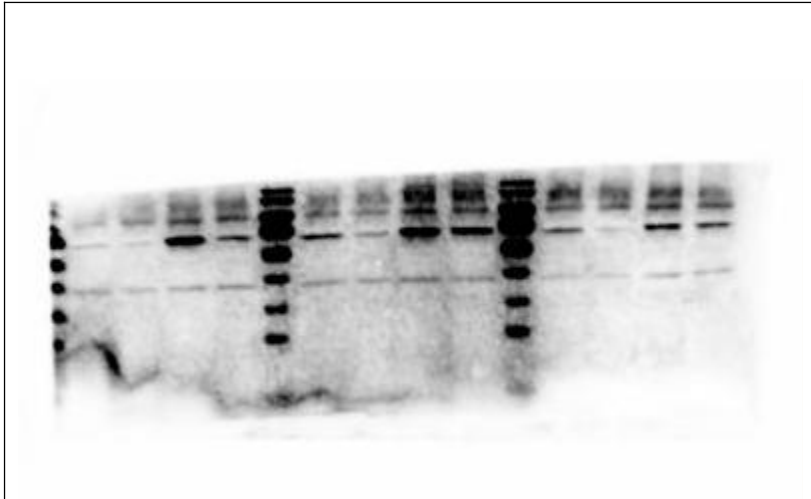
P-IRF-3

MW:

55 KD

Lane: 3,4,5,6

Right to Left



Sample name:

Protein samples of FHL2
overexpressing Caco2
cells stimulated by virus

Target protein:

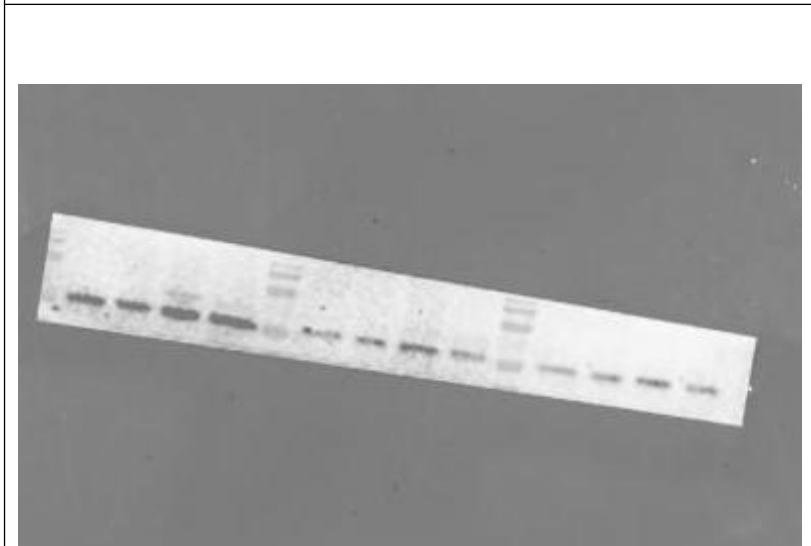
IRF-3

MW:

55 KD

Lane: 3,4,5,6

Right to Left



Sample name:

Protein samples of FHL2
overexpressing Caco2
cells stimulated by virus

Target protein:

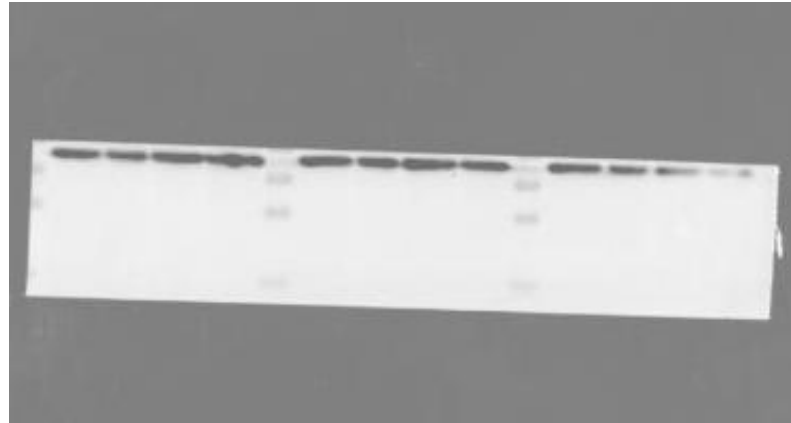
GAPDH

MW:

37 KD

Lane: 3,4,5,6

Right to Left



FigS16:Original Western images used for preparing Figure.5F

Sample name:

Protein samples of FHL2
knockdown Caco2 cells
stimulated by virus

Target protein:

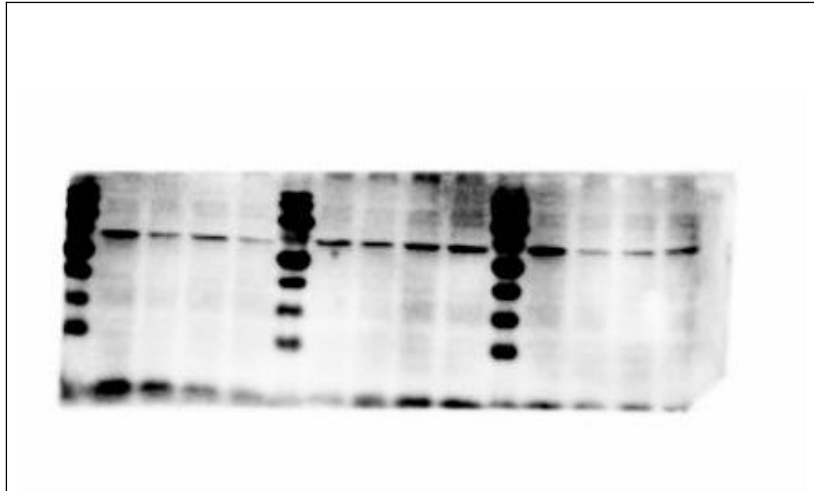
P-IRF-3

MW:

55 KD

Lane: 1,2,3,4

Left to Right



Sample name:

Protein samples of FHL2
knockdown Caco2 cells
stimulated by virus

Target protein:

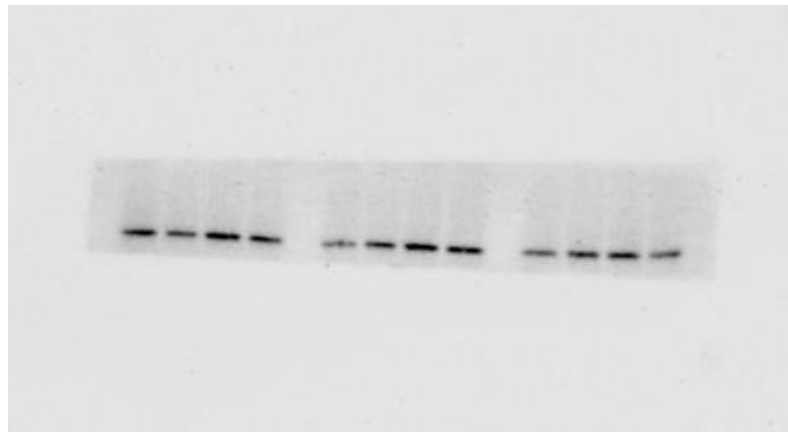
IRF-3

MW:

55 KD

Lane: 1,2,3,4

Left to Right



Sample name:

Protein samples of FHL2
knockdown Caco2 cells
stimulated by virus

Target protein:

GAPDH

MW:

37 KD

Lane: 1,2,3,4

Left to Right

