

[Supplementary data to *Int. J. Mol. Sci.*]

Promotion of Colitis in B-Cell-Deficient C57BL/6 Mice Infected with Enterotoxigenic *Bacteroides fragilis*

Minjeong Jo ^{1,2,†}, Soonjae Hwang ^{1,3,†}, Chang-Gun Lee ¹, Ju-Eun Hong ¹, Da-Hye Kang ¹, Sang-Hyeon Yoo ¹, Woo-Seung Kim ¹, Jung-Yoon Yoo ¹ and Ki-Jong Rhee ^{1,*}

¹ Department of Biomedical Laboratory Science, College of Software and Digital Healthcare Convergence, Yonsei University Mirae Campus, Wonju 26493, Republic of Korea; jominjeong@skku.edu (M.J.); soonjae@gachon.ac.kr (S.H.); cglee@yonsei.ac.kr (C.-G.L.); jehong@yonsei.ac.kr (J.-E.H.); loolzeo@gmail.com (D.-H.K.); yshyyb@yonsei.ac.kr (S.-H.Y.); redberry1245@yonsei.ac.kr (W.-S.K.); jy_yoo@yonsei.ac.kr (J.-Y.Y.)

² Department of Molecular Cell Biology, Sungkyunkwan University School of Medicine, Suwon 16419, Republic of Korea

³ Department of Biochemistry, Lee Gil Ya Cancer and Diabetes Institute, College of Medicine, Gachon University, Incheon 21999, Republic of Korea

* Correspondence: kjrhee@yonsei.ac.kr

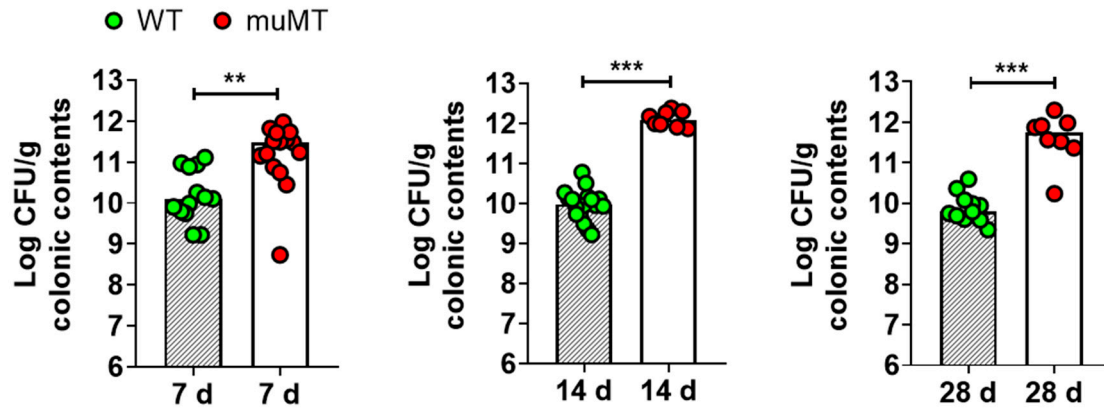
† These authors contributed equally.

Supplementary Figure S1. ETBF colonization in colon in ETBF-infected mice.

Supplementary Figure S2. Flow cytometry dot plot of mesenteric lymph nodes in mice.

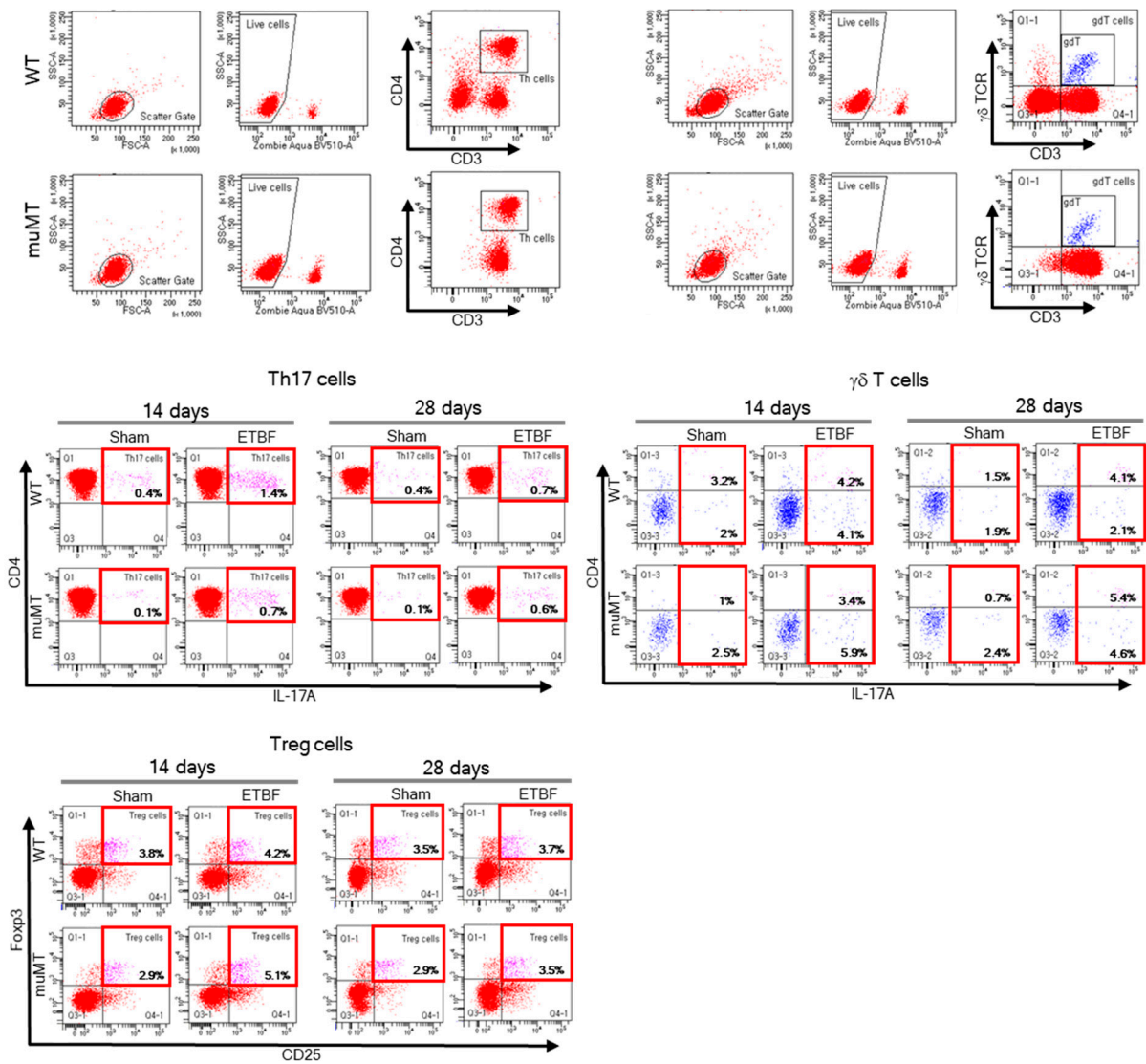
Supplementary Table S1. Histopathologic scoring of colon and ileum.

Supplementary Table S2. Probes for quantitative real-time PCR (TaqMan assay).



Supplementary Figure S1. ETBF colonization in colon of ETBF-infected mice.

Wild-type (WT) and muMT mice were infected with ETBF (1×10^9 CFU) for 28 days. ETBF colonization was assessed by bacterial culture of colonic contents at day 7, day 14 and day 28. $**p < 0.01$, $***p < 0.001$, Mann-Whitney test. Each dot represents one mouse. The bar graph represents median.



Supplementary Figure S2. Flow cytometric dot plot of mesenteric lymph nodes in mice.

WT and muMT mice were infected with ETBF (1×10^9 CFU) for day 14 or day 28. The proportion of Th17, IL-17A secreting $\gamma\delta$ T and Treg cells in the mesenteric lymph nodes was measured by flow cytometry. Representative flow cytometry dot plots are shown.

Supplementary Table S1. Histopathology scoring of colon and ileum

Tissue	Category	Description	Score
Colon, Ileum	Normal	Intact epithelium	0
		No crypt loss	
	Mild	85% < normal thickness of crypt length	1
		No infiltration of neutrophils	
		Involvement of the lamina propria	
		Crypt loss < 10%	
	Moderate	70% < normal thickness of crypt length ≤ 85%	2
		Mild infiltration of neutrophils	
		Involvement of the submucosa	
		10% ≤ crypt loss < 30%	
	Severe	50% ≤ normal thickness of crypt length < 70%	3
		Moderate infiltration of neutrophils	
		Transmural ulceration	
		30% < crypt loss	
		Normal thickness of crypt length < 50%	
		Severe infiltration of neutrophils	

Supplementary Table S2. Probes for qRT-PCR (TaqMan assay)

Gene symbol	Assay ID
<i>KC (Cxcl1)</i>	Mm04207460_m1
<i>Il-6</i>	Mm00446190_m1
<i>Il-17A</i>	Mm00439618_m1
<i>Il-1-β</i>	Mm00434228_m1
<i>Tnf-α</i>	Mm00443258_m1
<i>Nos2</i>	Mm00440502_m1
<i>GAPDH</i>	Mm99999915_g1
<i>GPR35</i>	Mm01973686_s1