

Figure S1 Effect of siMICALL2 on the invadopodia formation of HO-8910PM cells. (A) After transfection with siRNA and siMICALL2, HO-8910PM cells were stained with phalloidin (red), DAPI (blue), and cortactin (green). (B) Quantification of the percentage of cells with invadopodia and the number of invadopodia per cell. Scale: 2 μ m. ** P <0.01, *** P <0.001.

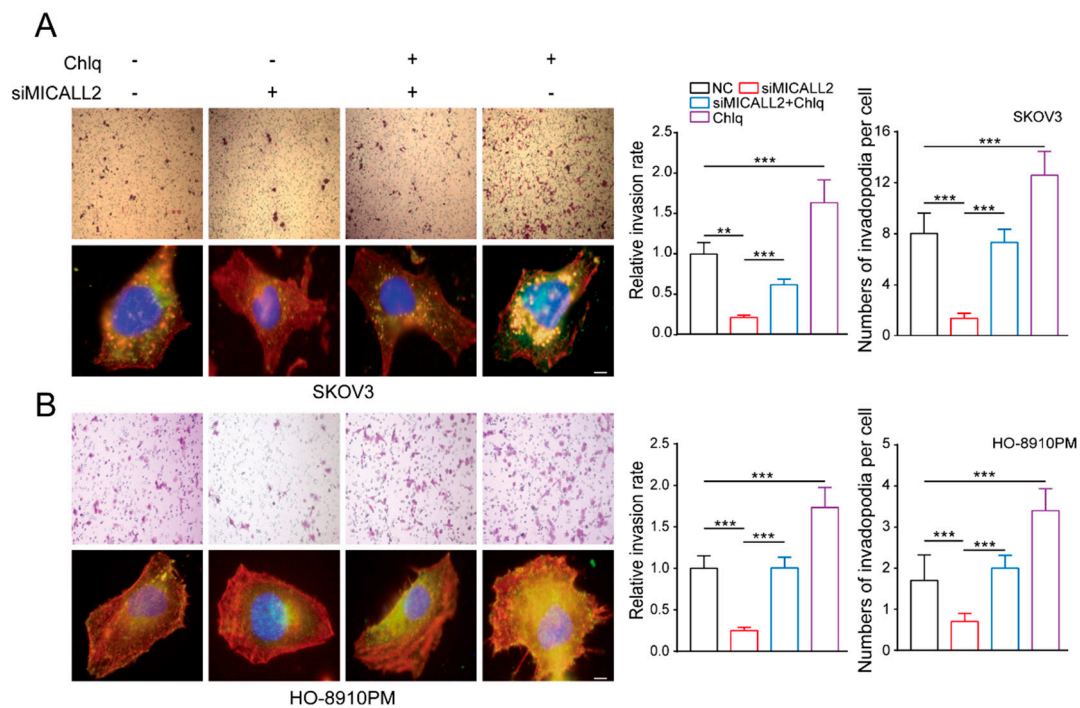


Figure S2 Effect of autophagy on the invasive ability of ovarian cancer cells. After the silencing of MICALL2, SKOV3 (A) and HO-8910PM cells (B) were pre-treated with Chlq (autophagy inhibitor). Subsequently, the invasive ability of cells and the number of invadopodia extensions in cells were determined. Scale: 2 μ m. *** P <0.001.

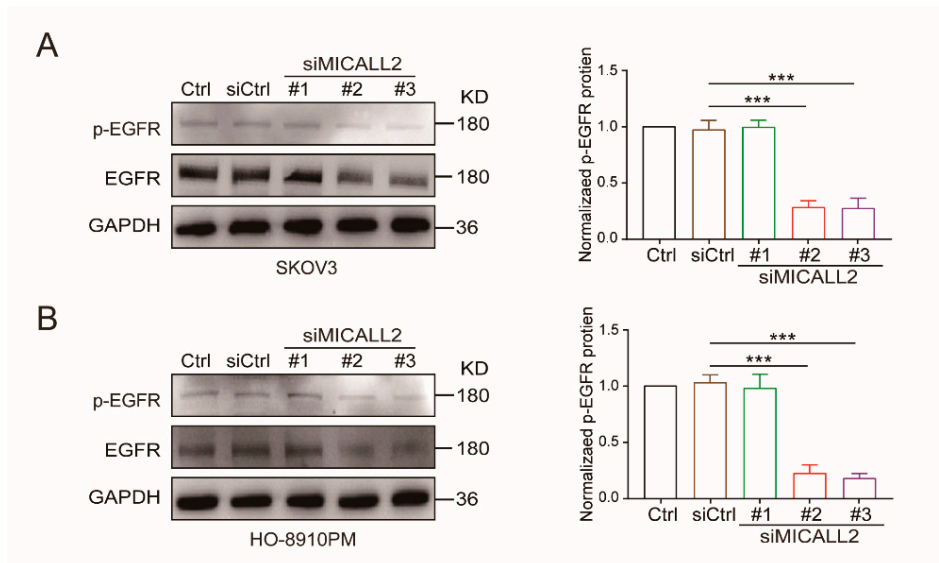


Figure S3 Effect of siMICALL2 on p-EGFR expression. (A, B) SKOV3 (A) and HO-8910PM (B) cells were transfected with control siRNA or siMICALL2. Subsequently, the levels of p-EGFR were detected by western blotting. *** $P < 0.001$.