

Supplementary Files

Table S1. Primer sequences.

Genes	Sequence (5'-3')	Length (bp)
<i>POU5F1-F</i>	GACAGGGGGAGGGGAGGAGCTAGG	24
<i>POU5F1-R</i>	CTTCCTCCAACCAGTTGCCCCAAAC	26
<i>ISL1-F</i>	AGATCAGCCTGCTTTTCAGC	20
<i>ISL1-R</i>	AGGACTGGCTAACCATGCTGT	21
<i>TNNT2-F</i>	ATGAGCGGGAGAAGGAGCGGCAGAAC	26
<i>TNNT2-R</i>	TCAATGGCCAGCACCTTCCTCCTCTC	26
<i>MYL2-F</i>	ACAGGGATGGCTTCATTGAC	20
<i>MYL2-R</i>	ATGCGTTGAGAATGGTTTCC	20
<i>MYH7-F</i>	ACATGCTGCTGATCACCAAC	20
<i>MYH7-R</i>	AAGCGTTATCAGTGGCCATG	20
<i>MYL7-F</i>	GGAGTTCAAAGAAGCCTTCAGC	22
<i>MYL7-R</i>	TCCTCTGGGACACTCACCTT	20
<i>MYH6-F</i>	TTCTCCGTGAAGGGATAACC	20
<i>MYH6-R</i>	CGTCTTCCCATTCTCGGTTTCAGC	24
<i>18s rRNA-F</i>	AGGAATTGACGGAAGGGCACCA	22
<i>18s rRNA-R</i>	GTGCAGCCCCGGACATCTAAG	21

¹ F: Forward

² R: Reverse

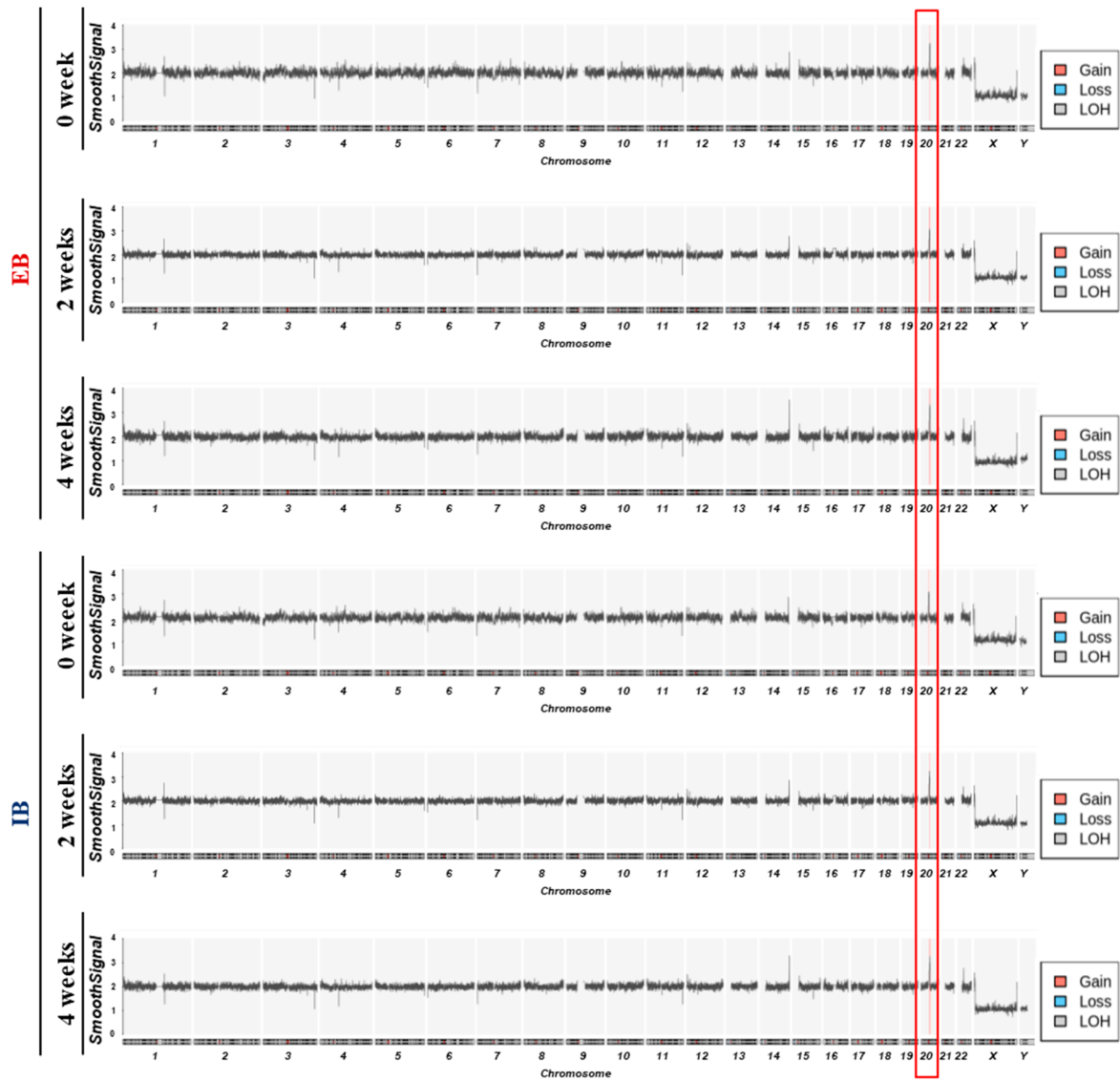
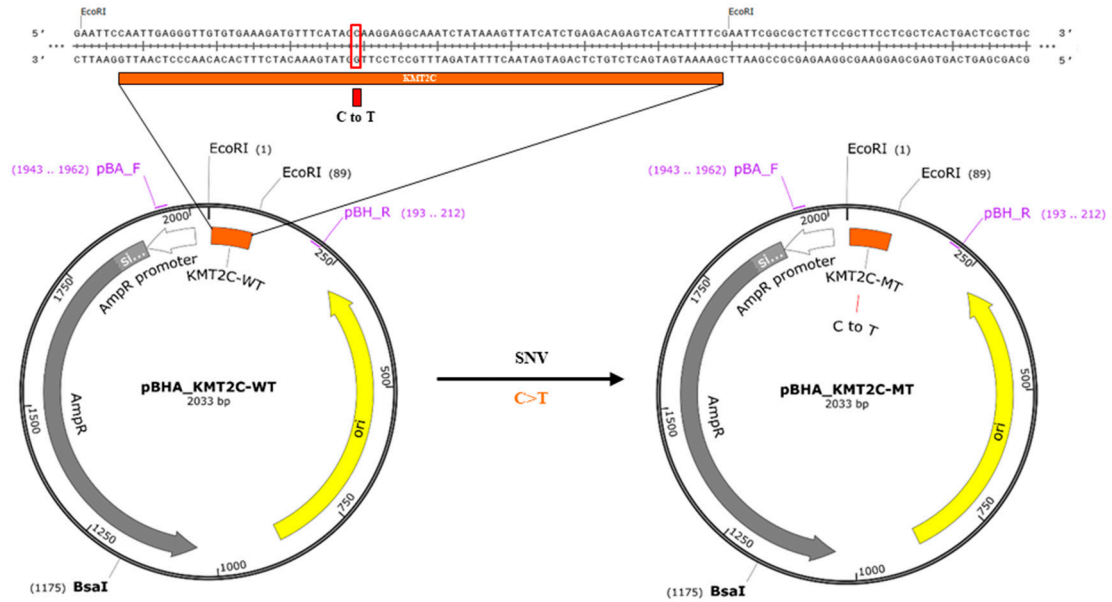


Figure S1. CytoscanHD chip analysis in hiPSC and hiPSC-CM.

(A) KMT2C



(B) BCOR

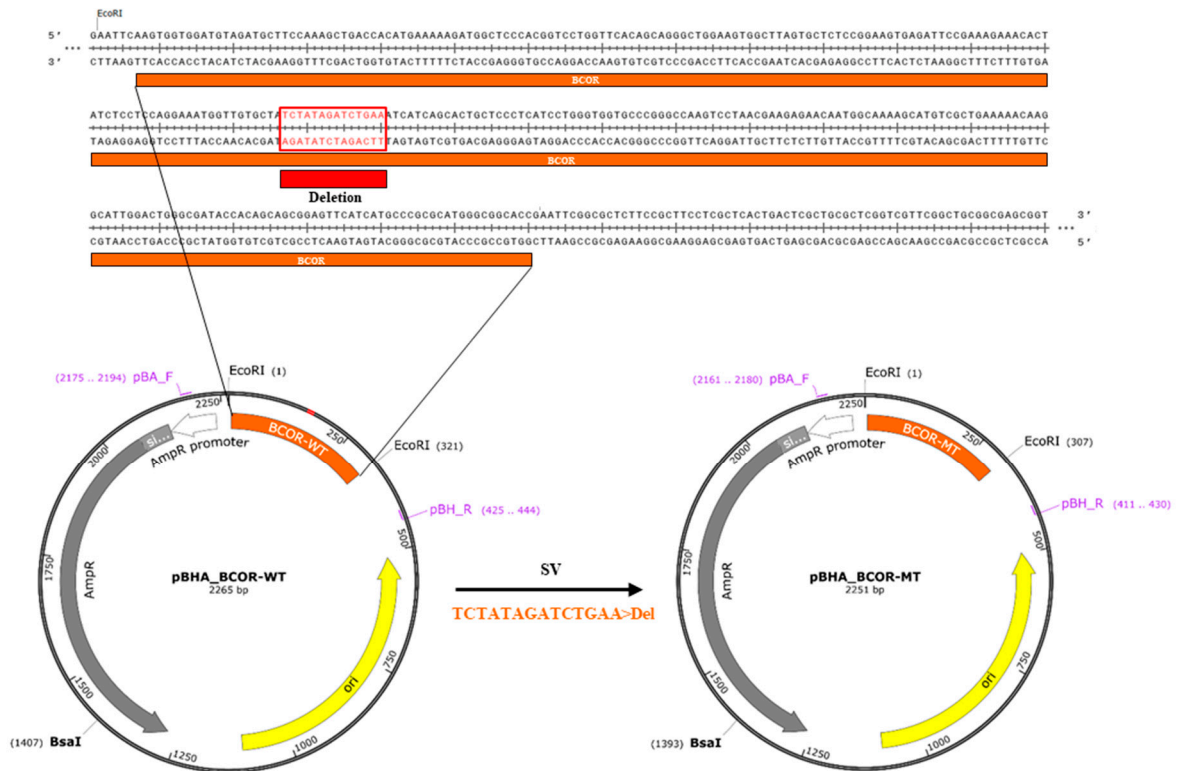
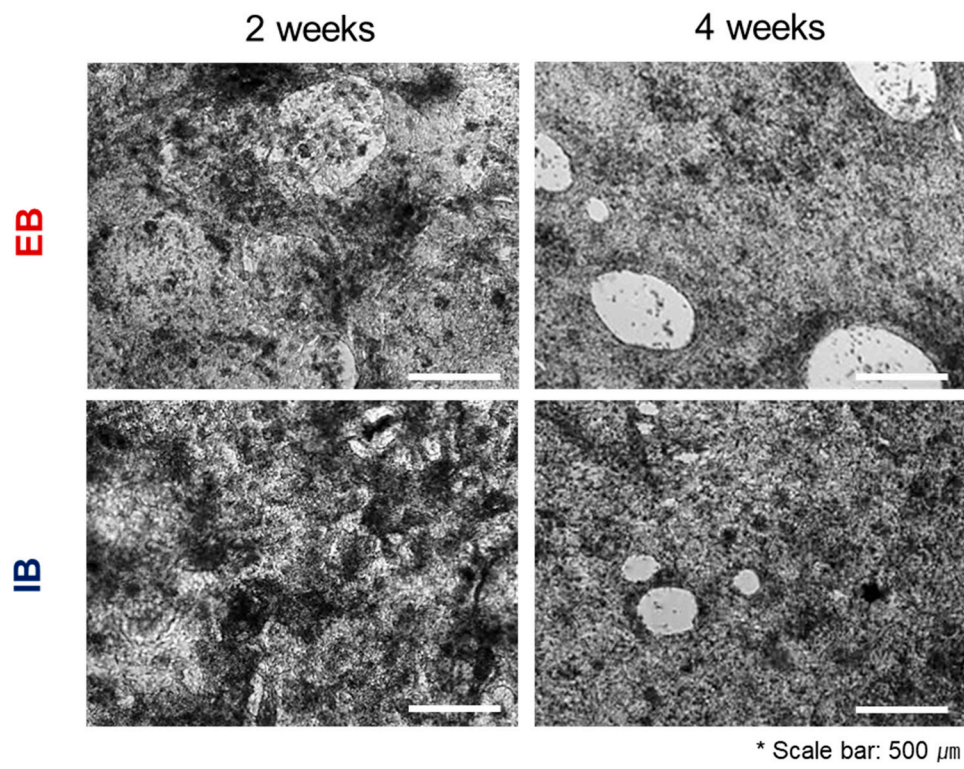


Figure S2. Plasmid vector cloning for control template design.



Video S1. Beating video of hiPSC-CM.