

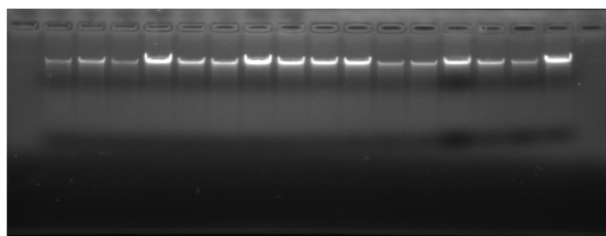
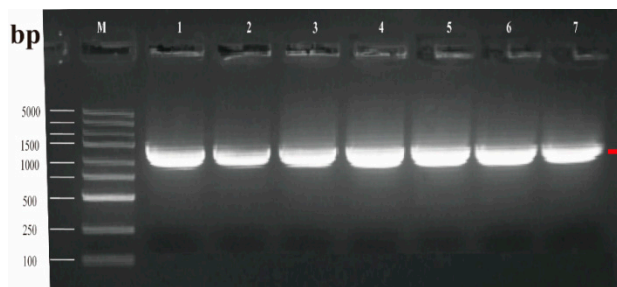
Supplementary Table S1: Primer Sequence

Gene name	Accession NO.	Sequence 5'-3'	Product Length
<i>PIK3R1</i>	XM_004016920.4	F: CCCACCATGACGAGAAGACT	116 bp
		R: GCCCTGTTTACTGCTTTCCC	
<i>PPARA</i>	XM_027968213.2	F: ATCGAGTGTAGGATCTGCGG	121 bp
		R: CGCATCTGTCATACACCAGC	
<i>GAPDH</i>	NM_001190390.1	F: CCATCTTCCAGGAGCGAGAT	137 bp
		R: TGGTCATAAGTCCCTCCACG	

Supplementary Table S2: Statistical analysis of IMF content

Sample	%Area	Mean	IntDen
STH	2.462	62.819	48014.94
STH	2.731	85.183	31832.84
STH	2.731	85.183	31832.84
STH	1.848	64.447	26144.59
STH	1.798	61.889	25955.27
STH	1.794	61.752	25867.58
SFK×STH	23.272	103.331	194767.3
SFK×STH	23.342	105.449	179256.5
SFK×STH	23.161	100.452	205817.5
SFK×STH	16.24	108.651	91621.73
SFK×STH	15.76	94.508	154686
SFK×STH	15.402	88.245	164132.4

Supplementary Figure S1: DNA Electrophoresis Detection Results of Sheep Blood Group

Supplementary Figure S2: PCR amplification products of *PIK3R1* gene

Supplementary Figure S3: Sanger sequencing peak of exon 7 DNA amplification fragment product
of sheep PIK3R1 gene

