

# **Stool Glycoproteomics Signatures of Pre-Cancerous Lesions and Colorectal Cancer**

## **-Supporting Information-**

Janine Soares <sup>1, 2, 3, #</sup> and Mariana Eiras <sup>1, #</sup>, Dylan Ferreira <sup>1, 2, 4, 5, 6</sup>, Daniela A. R. Santos <sup>1, 2, 7</sup>, Marta Relvas-Santos <sup>1, 2, 5, 6, 8</sup>, Beatriz Santos <sup>1</sup>, Martina Gonçalves <sup>1</sup>, Eduardo Ferreira <sup>1</sup>, Renata Vieira <sup>9</sup>, Luís Pedro Afonso <sup>1, 9</sup>, Lúcio Lara Santos <sup>1, 2, 10, 11, 12</sup>, Mário Dinis-Ribeiro <sup>7, 13, 14</sup>, Luís Lima <sup>1, \$</sup> and José Alexandre Ferreira <sup>1, 2, 11, \$ \*</sup>

<sup>1</sup> Experimental Pathology and Therapeutics Group, Research Center of IPO Porto (CI-IPOP)/RISE@CI-IPOP (Health Research Network), Portuguese Oncology Institute of Porto (IPO Porto), Porto Comprehensive Cancer Center Raquel Seruca (Porto.CCC Raquel Seruca), 4200-072 Porto, Portugal; <sup>2</sup> Institute of Biomedical Sciences Abel Salazar (ICBAS), University of Porto, 4050-313 Porto, Portugal ; <sup>3</sup> REQUIMTE-LAQV, Department of Chemistry, University of Aveiro, 3810-193, Aveiro, Portugal; <sup>4</sup> Center for Applied Medical Research (Centro de Investigación Médica Aplicada, CIMA), University of Navarra, 31008 Pamplona, Navarra, Spain; <sup>5</sup> i3S – Instituto de Investigação e Inovação em Saúde, Universidade do Porto, 4200-135 Porto, Portugal; <sup>6</sup> INEB-Instituto Nacional de Engenharia Biomédica, Universidade do Porto, 4200-135 Porto, Portugal ; <sup>7</sup> Faculty of Medicine (FMUP), University of Porto, 4200-072, Porto, Portugal; <sup>8</sup> REQUIMTE-LAQV, Department of Chemistry and Biochemistry, Faculty of Sciences, University of Porto, 4169-007, Porto, Portugal; <sup>9</sup> Department of Pathology, Portuguese Oncology Institute of Porto, Porto, Portugal; <sup>10</sup> FF-I3ID, University Fernando Pessoa, 4249-004, Porto, Portugal; <sup>11</sup> GlycoMatters Biotech, 4500-162, Espinho, Portugal; <sup>12</sup> Department of Surgical oncology, Portuguese Oncology Institute of Porto (IPO-Porto), 4200-072, Porto, Portugal; <sup>13</sup> Precancerous Lesions and Early Cancer Management Group, Research Center of IPO Porto (CI-IPOP)/Rise@CI-IPOP (Health Research Group), Portuguese Institute of Oncology of Porto (IPO Porto)/Porto Comprehensive Cancer Center Raquel Seruca (Porto.CCC Raquel Seruca), Porto, Portugal; <sup>14</sup> Department of Gastroenterology, Portuguese Oncology Institute of Porto, Porto, Portugal

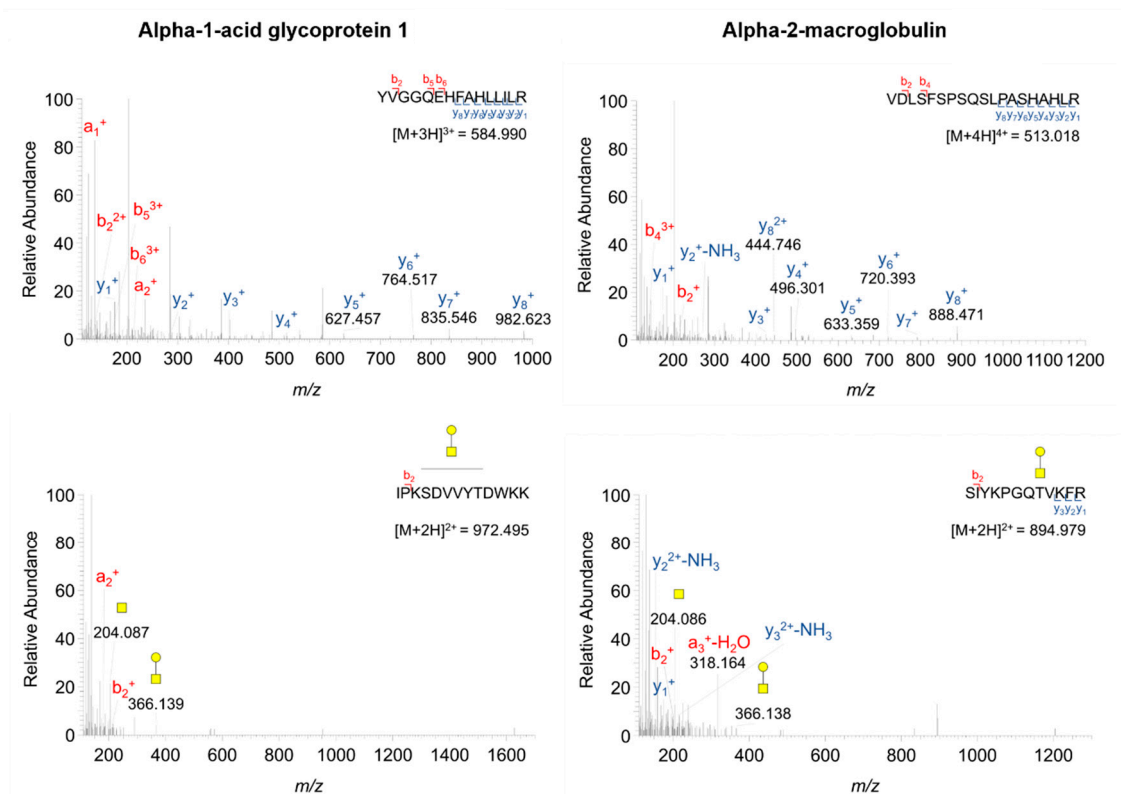
**Corresponding author:**

José Alexandre Ferreira (jose.a.ferreira@ipoporto.min-saude.pt)

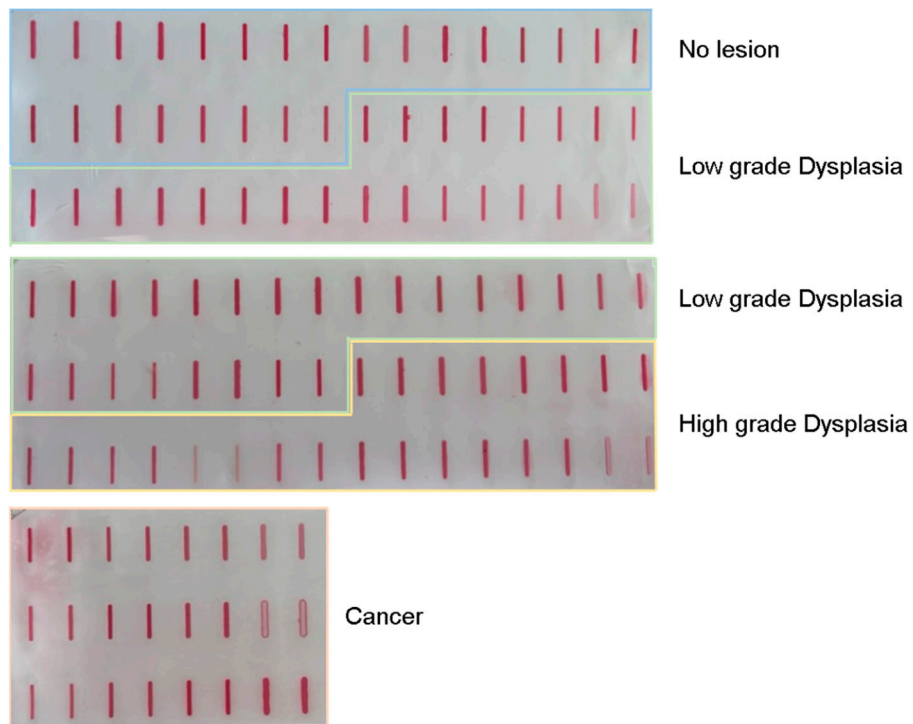
Experimental Pathology and Therapeutics Group, Research Centre, Portuguese

Oncology Institute of Porto, R. Dr. António Bernardino de Almeida 62, 4200-072 Porto, Portugal; Tel. +351 225084000 (ext. 5111).

**Keywords:** proteomics; glycoproteomics; colorectal cancer; stool



**Supplementary Figure S1.** MS/MS spectra for peptides not modified with glycosylation (top panel) and glycopeptides (bottom panel), supporting the expression of the glycoproteins alpha-1-acid glycoprotein 1 and alpha-2-macroglobulin in stool samples.



**Supplementary Figure S2.** Ponceau staining from stool sample' slot blot for T-antigen expression assertion.