

Figure S1. The TEM of colostrum and mature milk-derived EVs.

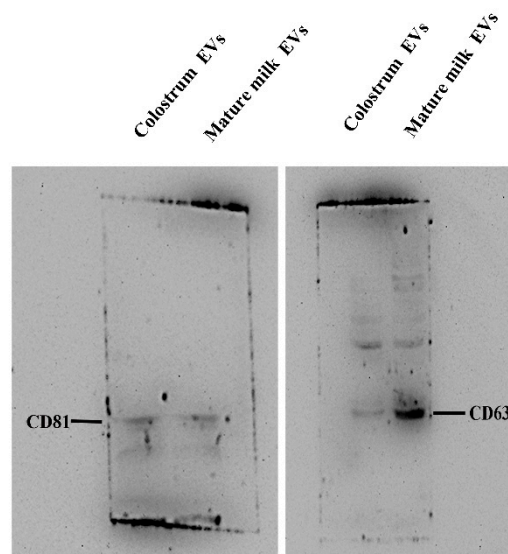


Figure S2. The colostrum and mature milk-derived EVs protein markers (CD81 and CD63) detected by Western blot.

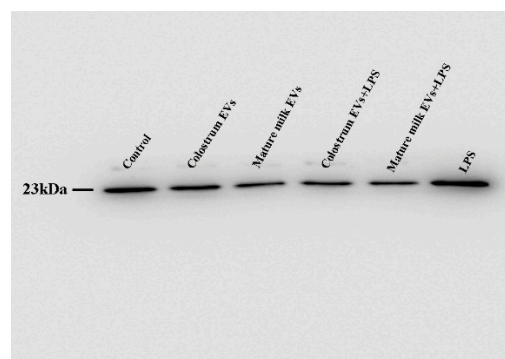


Figure S3. The Bax protein level in IEC-6 cells after colostrum EVs, mature milk EVs and LPS treatment detected by Western blot.

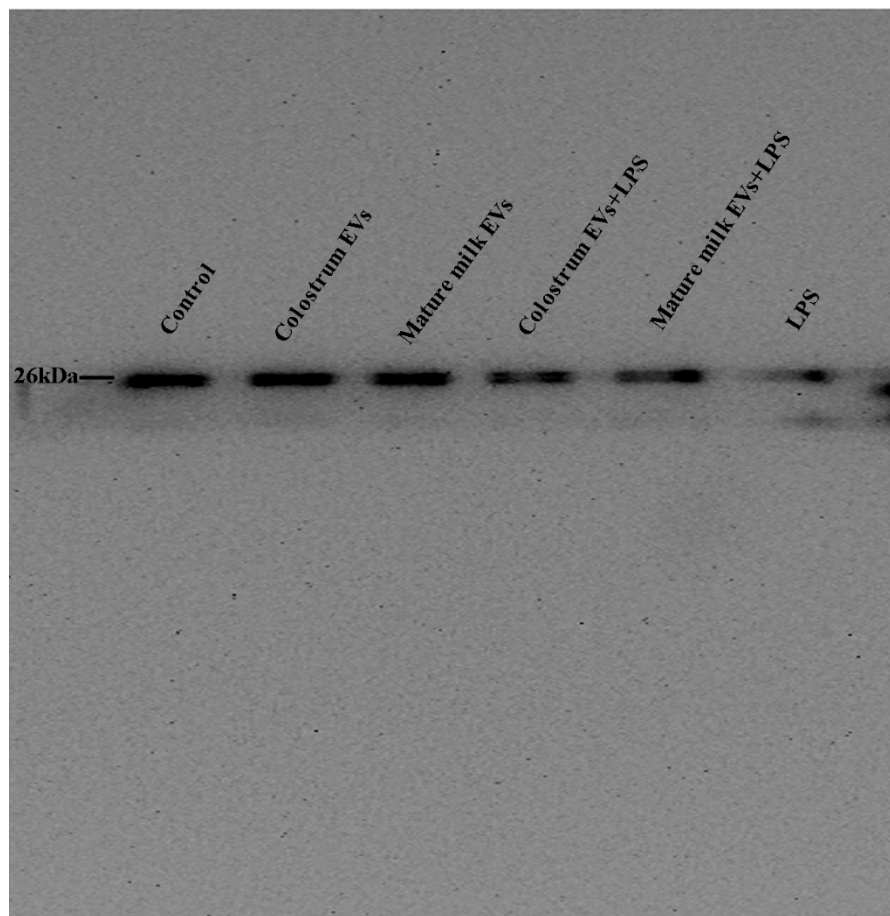


Figure S4. The Bcl2 protein level in IEC-6 cells after colostrum EVs, mature milk EVs and LPS treatment detected by Western blot.

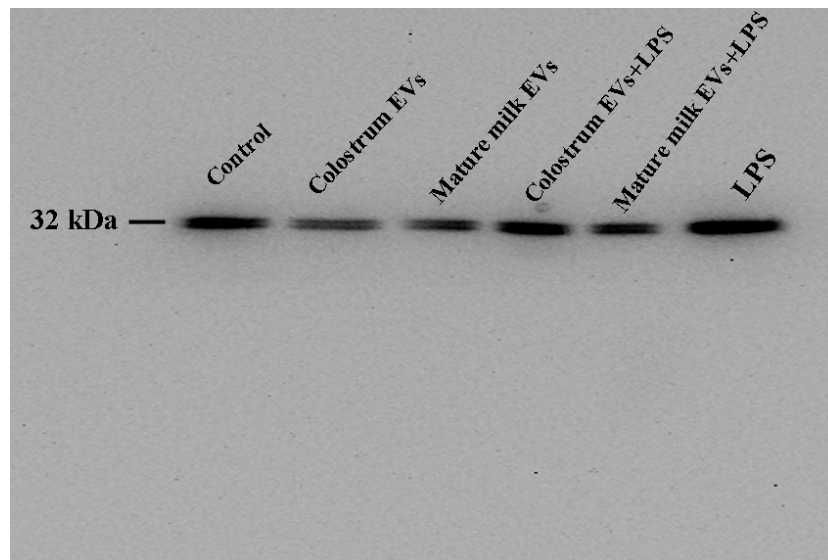


Figure S5. The Caspase-3 protein level in IEC-6 cells after colostrum EVs, mature milk EVs and LPS treatment detected by Western blot.

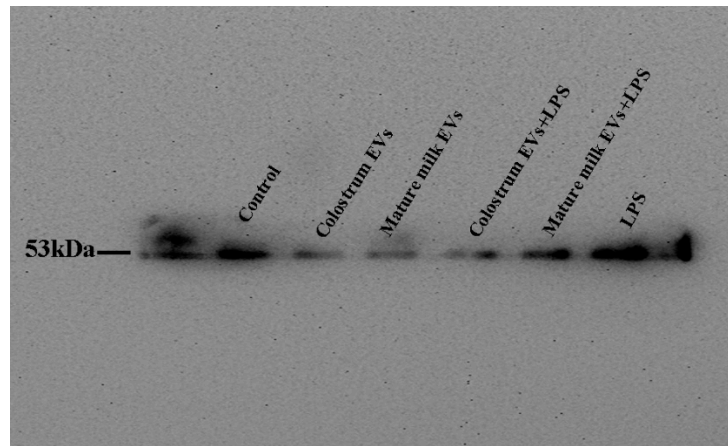


Figure S6. The P53 protein level in IEC-6 cells after colostrum EVs, mature milk EVs and LPS treatment detected by Western blot.

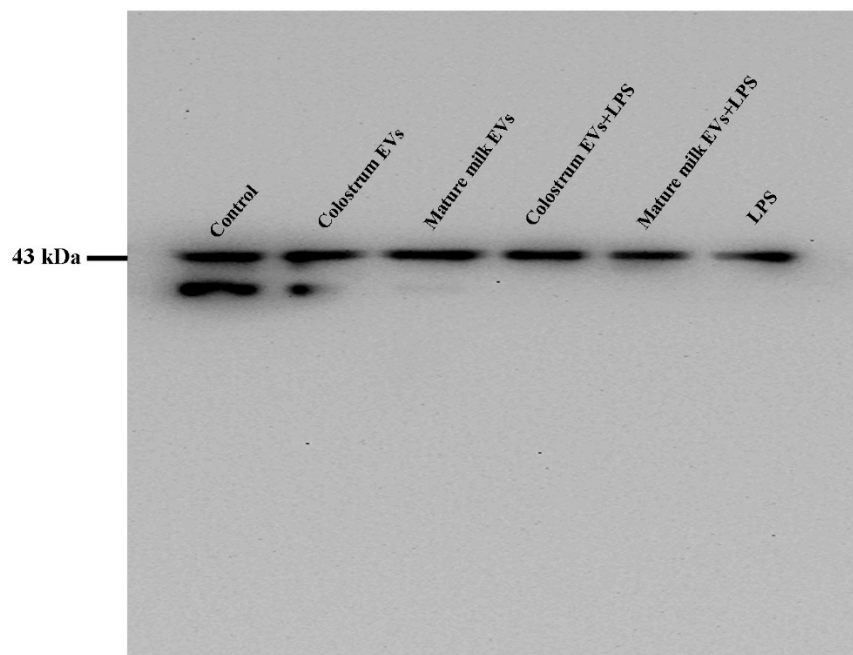


Figure S7. The β -actin protein level in IEC-6 cells after colostrum EVs, mature milk EVs and LPS treatment detected by Western blot.