

Table S1. List of samples obtained for the study.

Subspecies of <i>Ara militaris</i>	Locality	Tissue type	Number of specimens of ANMH	GenBank ID
<i>A. m. mexicanus</i>	Jalisco; Los Masos	Toe pads	SKIN105359	KT957217
<i>A. m. mexicanus</i>	Jalisco; Los Masos	Toe pads	SKIN105360	KT957209
<i>A. m. mexicanus</i>	Jalisco; Volcán de Colima	Toe pads	SKIN105361	KT957221
<i>A. m. mexicanus</i>	Jalisco; Volcán de Colima	Toe pads	SKIN105362	KT957222
<i>A. m. mexicanus</i>	Jalisco; Volcán de Colima	Toe pads	SKIN804990	KT957221
<i>A. m. mexicanus</i>	Jalisco; Volcán de Colima	Toe pads	SKIN105363	KT957218
<i>A. m. mexicanus</i>	Jalisco; Volcán de Colima	Toe pads	SKIN105364	KT957224
<i>A. m. mexicanus</i>	Jalisco; Volcán de Colima	Toe pads	SKIN105365	KT957226
<i>A. m. mexicanus</i>	Jalisco; Las Peñas	Toe pads	SKIN393338	KT957210
<i>A. m. mexicanus</i>	Jalisco; Las Peñas	Toe pads	SKIN393339	KT957214
<i>A. m. mexicanus</i>	Jalisco; Las Peñas	Toe pads	SKIN393340	KT957223
<i>A. m. mexicanus</i>	Jalisco; Las Peñas	Toe pads	SKIN393341	KT957219
<i>A. m. mexicanus</i>	Jalisco; Bahía Balderas	Toe pads	SKIN474241	KT957215
<i>A. m. mexicanus</i>	Jalisco; Bahía Balderas	Toe pads	SKIN474242	KT957216
<i>A. m. mexicanus</i>	Nayarit; Barranca del Oro	Toe pads	SKIN474243	KT957211
<i>A. m. mexicanus</i>	Nayarit; Barranca del Oro	Toe pads	SKIN474244	KT957212
<i>A. m. mexicanus</i>	Nayarit; Tuxpan	Toe pads	SKIN474245	KT957213
<i>A. m. mexicanus</i>	Nayarit; Tecuala	Toe pads	SKIN704427	KT957225
<i>A. m. mexicanus</i>	Sonora;	Feathers	ISOLMPSA1	KT957246

<i>A. m. mexicanus</i>	Álamos Sinaloa; Cósala	Feathers	ISOLMPNM1	KT957252
<i>A. m. mexicanus</i>	Sinaloa; Cósala	Feathers	ISOLMPNM2	KT957257
<i>A. m. mexicanus</i>	Sinaloa; Cósala	Feathers	ISOLMPNM11	KT957262
<i>A. m. mexicanus</i>	Sinaloa; Cósala	Feathers	ISOLMPNM16	KT957263
<i>A. m. mexicanus</i>	Sinaloa; Cósala	Feathers	ISOLMPNM12	KT957264
<i>A. m. mexicanus</i>	Sinaloa; Cósala	Feathers	ISOLMPNM23	KT957265
<i>A. m. mexicanus</i>	Sinaloa; Cósala	Feathers	ISOLMPNM14	KT957266
<i>A. m. mexicanus</i>	Sinaloa; Cósala	Feathers	ISOLMPNM19	KT957267
<i>A. m. mexicanus</i>	Sinaloa; Cósala	Feathers	ISOLMPNM10	KT957268
<i>A. m. mexicanus</i>	Sinaloa; Cósala	Feathers	ISOLMPNM3	KT957269
<i>A. m. mexicanus</i>	Sinaloa; Cósala	Feathers	ISOLMPNM22	KT957270
<i>A. m. mexicanus</i>	Sinaloa; Cósala	Feathers	ISOLMPNM6	KT957271
<i>A. m. mexicanus</i>	Sinaloa; Cósala	Feathers	ISOLMPNM15	KT957272
<i>A. m. mexicanus</i>	Sinaloa; Cósala	Feathers	ISOLMPNM18	KT957273
<i>A. m. mexicanus</i>	Sinaloa; Cósala	Feathers	ISOLMPNM20	KT957274
<i>A. m. mexicanus</i>	Sinaloa; Cósala	Feathers	ISOLMPNM5	KT957275
<i>A. m. mexicanus</i>	Nayarit; Mirador del Águila	Feathers	ISOLMPMA1	KT957249
<i>A. m. mexicanus</i>	Nayarit; Mirador del Águila	Feathers	ISOLMPMA2	KT957250
<i>A. m. mexicanus</i>	Nayarit; Mirador del Águila	Feathers	ISOLMPMA3	KT957253
<i>A. m. mexicanus</i>	Nayarit; Mirador del Águila	Feathers	ISOLMPMA4	KT957254
<i>A. m. mexicanus</i>	Nayarit; Mirador del Águila	Feathers	ISOLMPMA5	KT957258
<i>A. m. mexicanus</i>	Jalisco; Tuito	Feathers	ISOLMPET1	KT957255

<i>A. m. mexicanus</i>	Jalisco; Tuito	Feathers	ISOLMPET2	KT957256
<i>A. m. mexicanus</i>	Jalisco; Tuito	Feathers	ISOLMPET3	KT957260
<i>A. m. mexicanus</i>	Jalisco; Tuito	Feathers	ISOLMPET4	KT957261
<i>A. m. mexicanus</i>	Oaxaca; Tecomavaca	Feathers	ISOLMPST1	KT957247
<i>A. m. mexicanus</i>	Oaxaca; Tecomavaca	Feathers	ISOLMPST2	KT957248
<i>A. m. mexicanus</i>	Oaxaca; Tecomavaca	Feathers	ISOLMPST4	KT957251
<i>A. m. mexicanus</i>	Oaxaca; Tecomavaca	Feathers	ISOLMPST5	KT957259
<i>A. m. mexicanus</i>	Querétaro; Sotáno del Barro	Feathers	ISOLMGSB1	KT957241
<i>A. m. mexicanus</i>	Querétaro; Sotáno del Barro	Feathers	ISOLMGSB2	KT957243
<i>A. m. mexicanus</i>	Tamaulipas; El Cielo	Feathers	ISOLMGEC1	KT957242
<i>A. m. mexicanus</i>	Tamaulipas; El Cielo	Feathers	ISOLMGEC2	KT957244
<i>A. m. mexicanus</i>	Tamaulipas; El Cielo	Feathers	ISOLMGEC3	KT957245
<i>A. m. militaris</i>	Colombia; Santa Marta	Toe pads	SKIN474233	1864685
<i>A. m. militaris</i>	Colombia; Santa Marta	Toe pads	SKIN474234	1864685
<i>A. m. militaris</i>	Colombia; Bogotá	Toe pads	SKIN474240	1864685
<i>A. m. militaris</i>	Colombia; Bogotá	Toe pads	SKIN474235	1864685
<i>A. m. militaris</i>	Colombia; Bogotá	Toe pads	SKIN833892	1864685
<i>A. m. militaris</i>	Perú; Loreta	Toe pads	SKIN474236	1864685
<i>A. m. militaris</i>	Perú; Loreta	Toe pads	SKIN474237	1864685
<i>A. m. militaris</i>	Perú; Loreta	Toe pads	SKIN474238	1864685
<i>A. m. militaris</i>	Perú; Loreta	Toe pads	SKIN474239	1864685
<i>A. m. bolivianus</i>	Bolivia; Sara	Toe pads	SKIN474227	1864685
<i>A. m. bolivianus</i>	Bolivia; Sara	Toe pads	SKIN474228	1864685
<i>A. m. bolivianus</i>	Bolivia; Sara	Toe pads	SKIN474229	1864685
<i>A. m. bolivianus</i>	Bolivia; Sara	Toe pads	SKIN474230	1864685
<i>A. m. bolivianus</i>	Bolivia; Sara	Toe pads	SKIN474231	1864685
<i>A. m. bolivianus</i>	Bolivia; Sara	Toe pads	SKIN474232	1864685

AMNH = American Museum Natural History

A. m. mexicanus = Distributed in Mexico

A. m. militaris = Distributed in Venezuela, Colombia, Ecuador and Perú

A. m. bolivianus = Distributed in Bolivia and Argentina

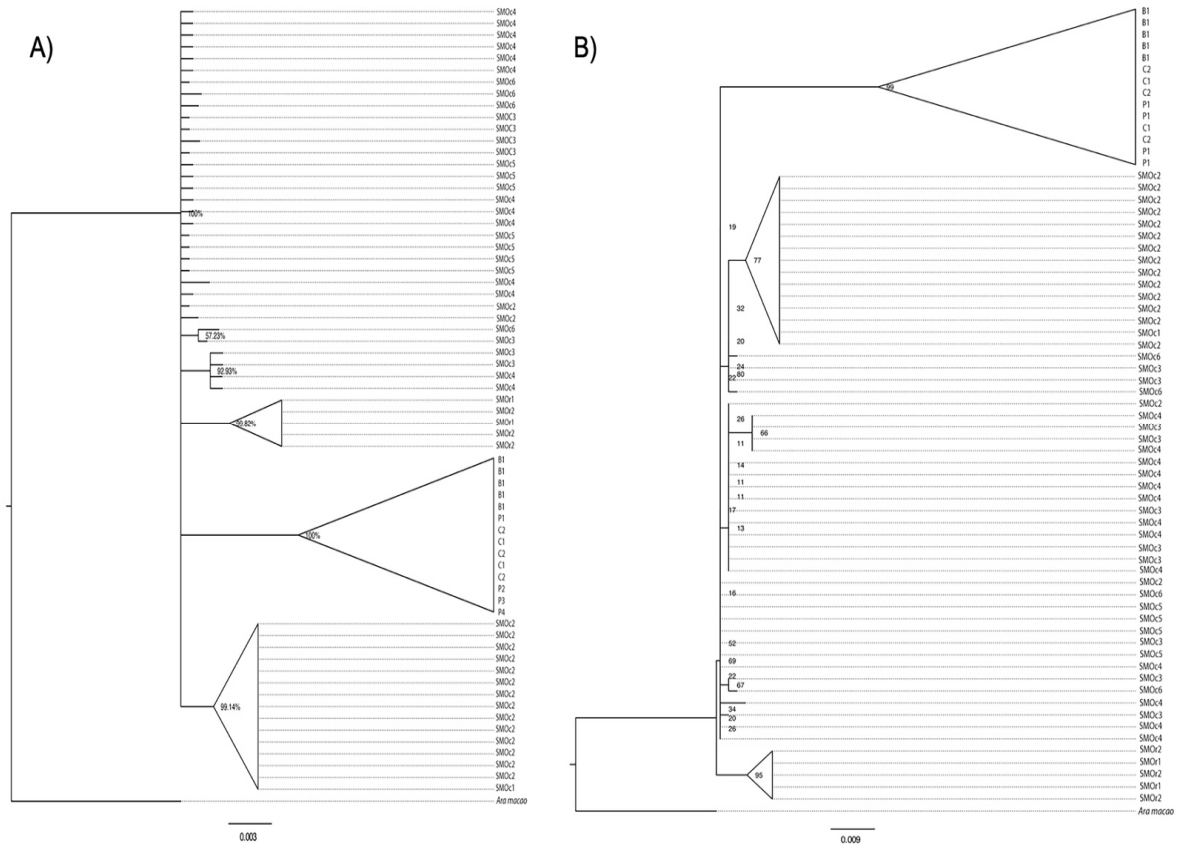


Figure S1. We constructed mtDNA phylogenetic trees based on a *Cyt-b* gene data set consisting of more than 300 base pairs, with a single outgroup species (*Ara macao*). **(A)** maximum likelihood (ML) approach and **(B)** The Bayesian inference (BI) approach were employed in our analysis, including 68 terminals and 582 positions. SMOc1 to 6 = Mexico-Sierra Madre Occidental/Sierra Madre del Sur, SMOs1 to 2 = Mexico-Sierra Madre Oriental. C1 to 2 = Colombia, P1 = Peru, and B1 = Bolivia.