

Supporting Information

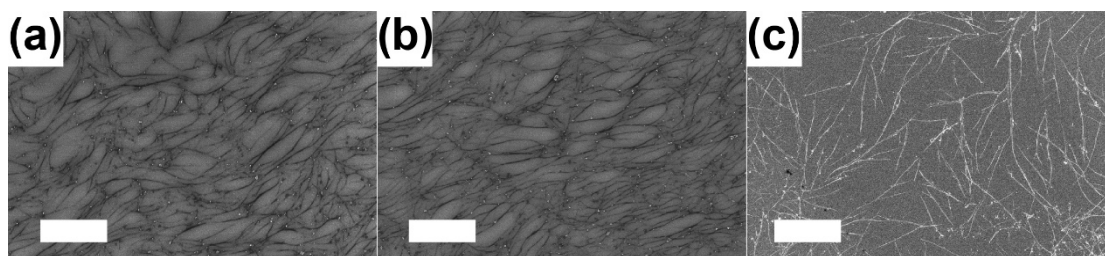


Figure S1. SEM images (scale bar, 2 μm) for P1-, P2-, and P3-SWCNTs.

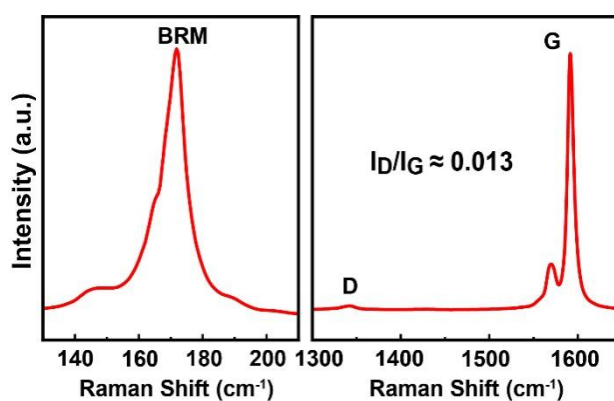


Figure S2. Raman spectrum for as-prepared P3-SWCNT film added with SDS.

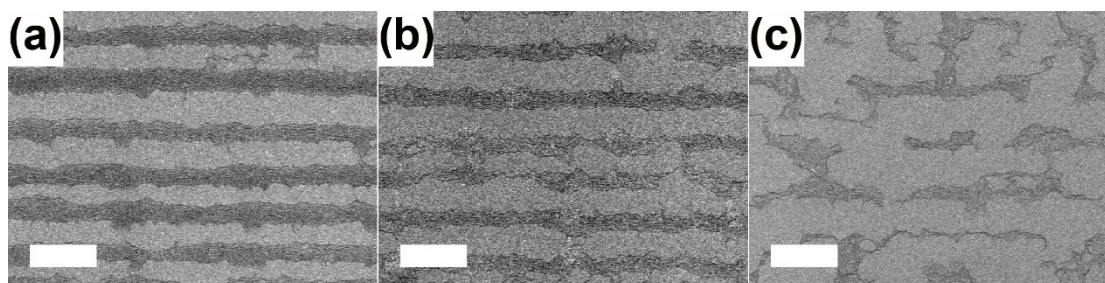


Figure S3. SEM images (scale bar, 10 μm) to illustrate the withdrawal speed effect for P3-SWCNT films at different withdrawal speeds (0.10, 0.15 and 0.20 μm/s), and with a fixed SWCNT concentration (~14 μg/ml) and under ambient conditions (~17 °C, RH=~50-70%).