

Fluorescent Imprinted Nanoparticles for Sensing of chlorogenic acid in coffee extracts

Anggy Lusanna Gutierrez-Ortíz¹, Veronica Vida¹, Matjaz Peterka², Jasmina Tušar², Federico Berti¹, Luciano Navarini³, Cristina Forzato^{1,*}

Supplementary Material

Calibration curves

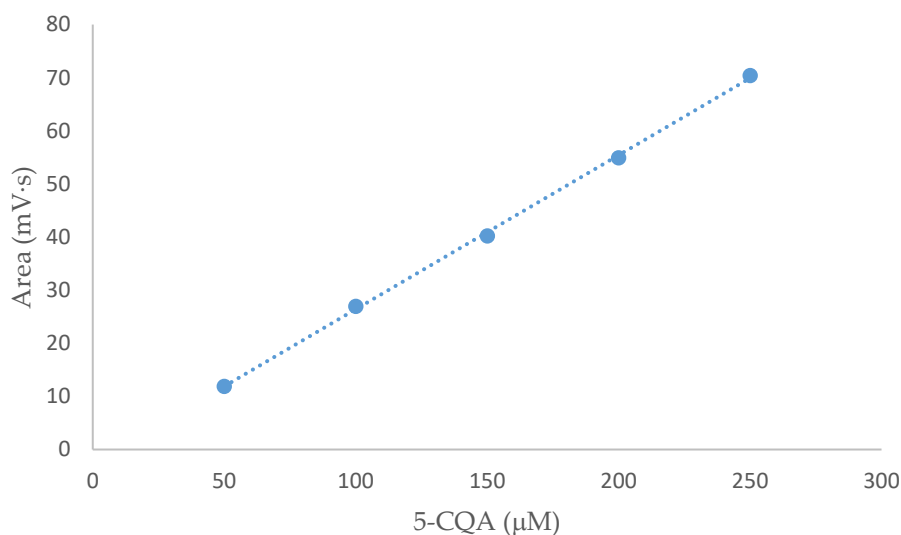


Figure S1. HPLC calibration for 5-CQA, average of triplicate measures. Linear regression for 5-CQA: r^2 0.999, slope 0.29, intc. 2.61. Linear regression for HT: r^2 0.997, slope 47.01, intc. -29.15

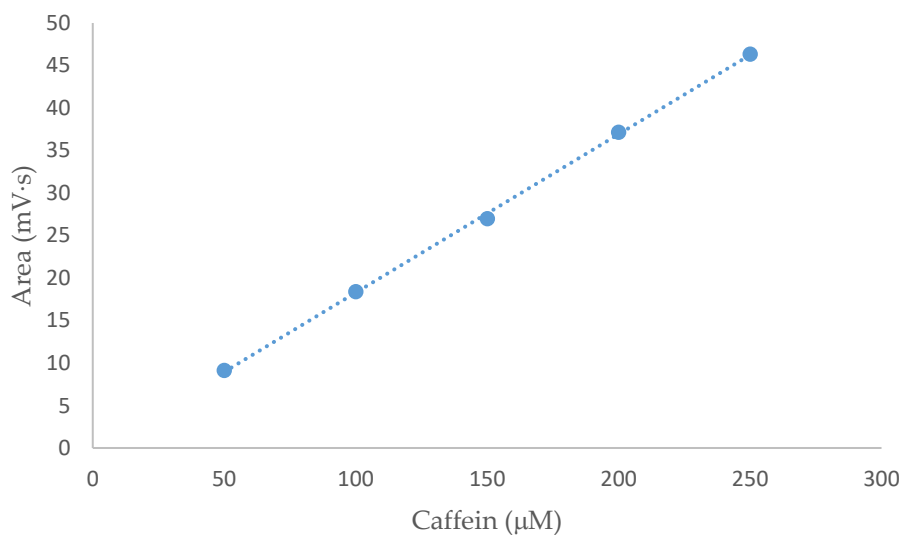


Figure S2. HPLC calibration for caffeine, average of triplicate measures. Linear regression: r^2 0.999, slope 0.19, intc. 0.37

Interactions of functional monomers with the targets: NMR titrations

In figures S3 – S7 are reported the most significant changes in the NMR spectra of 4VP and monomer 7 upon titration with increasing amount of 5-CQA leading to the most relevant effect.

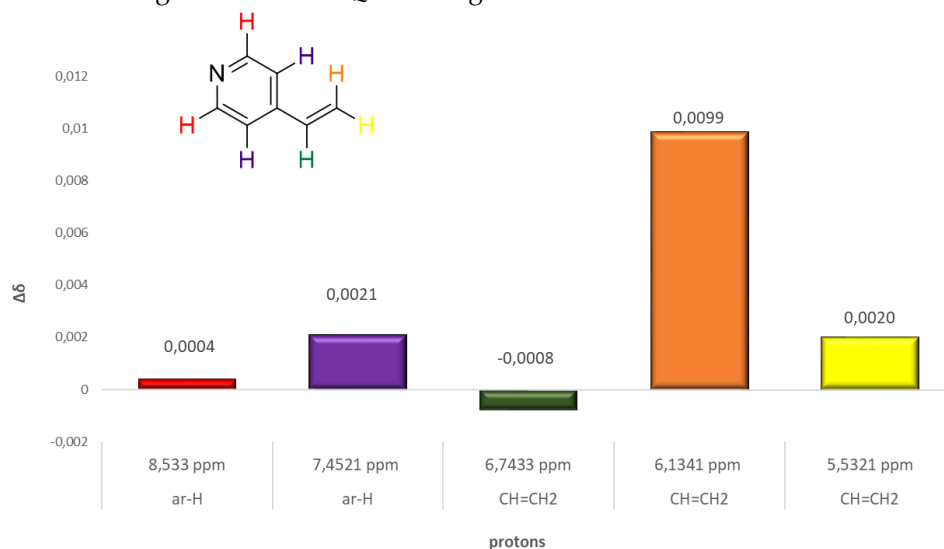


Figure S3. Histogram of the chemical shift variations in the ^1H -NMR spectrum of 4VP upon addition of 10 equivalents of 5-CQA

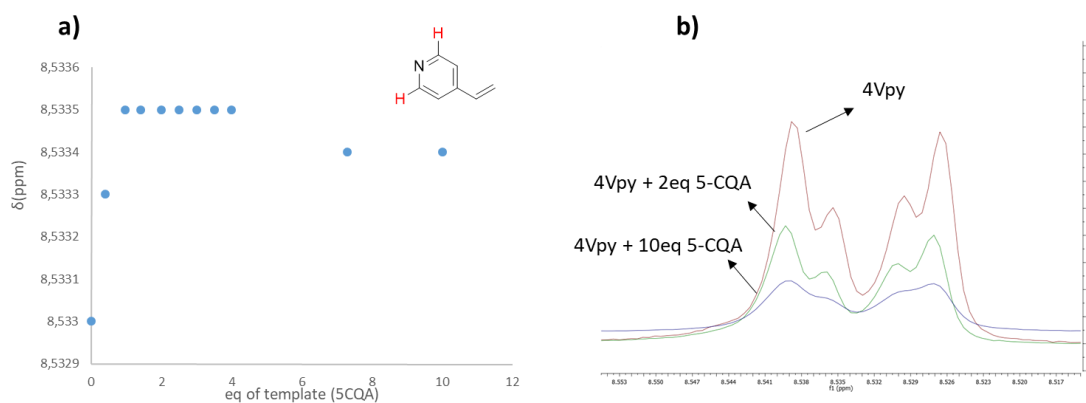


Figure S4. a) Chemical shift variation of aromatic proton of 4-vinylpyridine (4Vpy) upon interaction with template molecule (5-CQA). b) progressive shift of the proton aromatic protons adjacent to the nitrogen atom of the pyridine ring in the ^1H -NMR spectra. Pure 4Vpy (red), addition of 2eq of 5-CQA (green) and 10eq (blue).

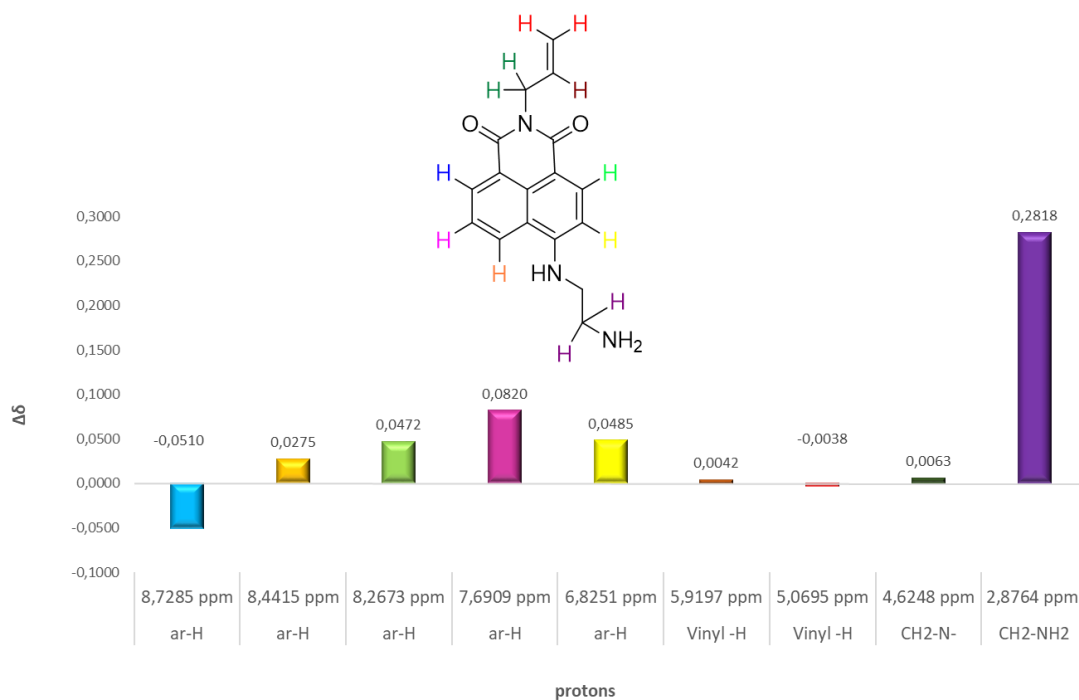


Figure S5. Histogram of the chemical shift variations in the ^1H -NMR spectrum of **7** upon progressive additions of 10eq of 5-CQA

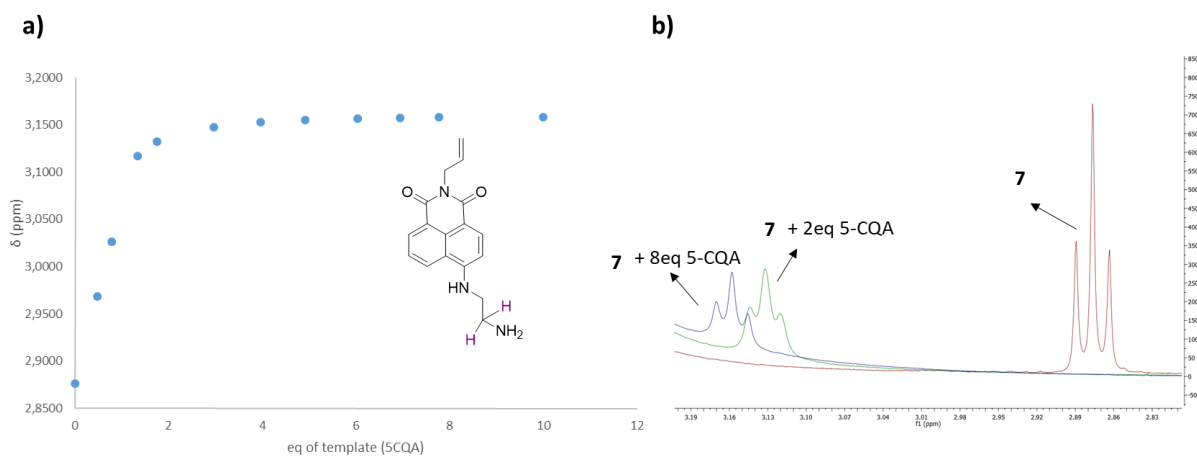


Figure S6. a) Chemical shift variation of CH_2NH_2 protons of monomer **7** upon interaction with 5-CQA; b) progressive shift of protons CH_2NH_2 in the ^1H -NMR spectra.

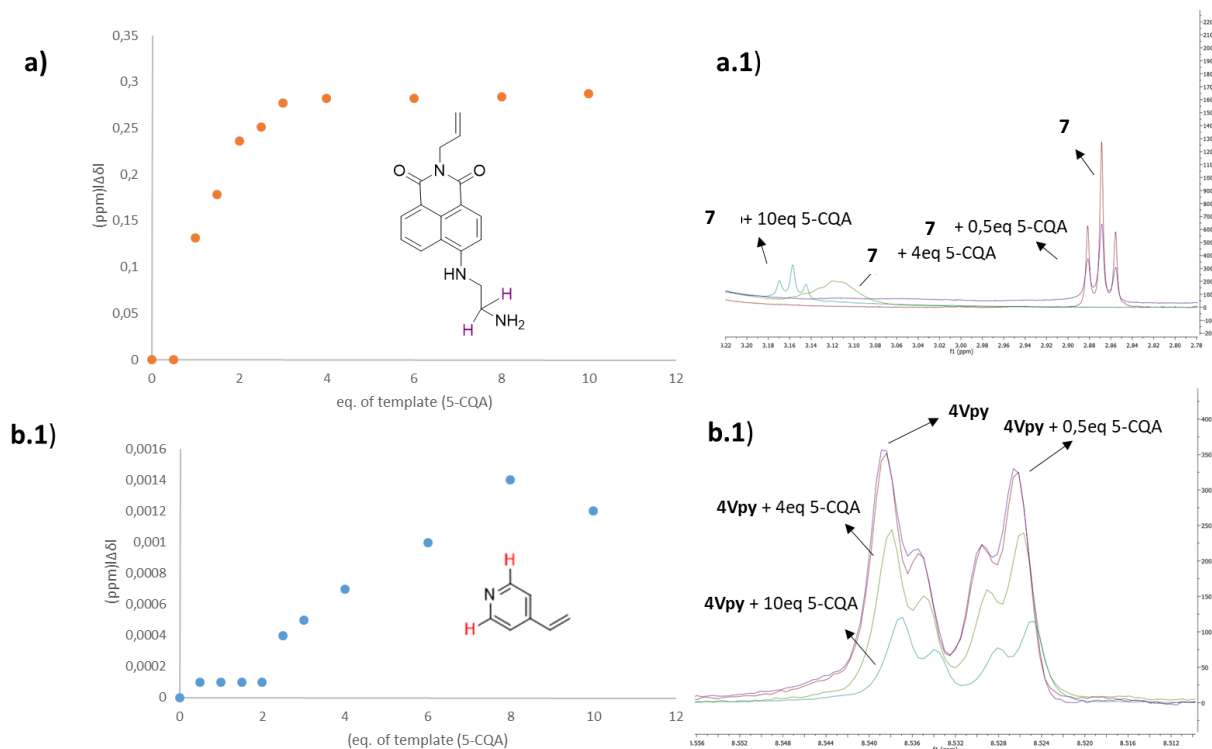


Figure S7: a) Chemical shift variation of CH_2NH_2 protons of monomer **7** upon interaction of a monomers mix with template molecule (5-CQA). **a.1)** progressive shift of the protons CH_2NH_2 in the ^1H -NMR spectra: **7** (red), addition of 0.5eq of 5-CQA (purple), 4eq (green) and 10q (blue). **b)** Chemical shift variation of aromatic proton of 4VP upon interaction of a mixture of monomers and the template molecule (5-CQA). **b.1)** progressive shift of the proton Ar-H in the ^1H -NMR spectra. 4VP (red), addition of 0.5eq of 5-CQA (purple), 4eq (green) and 10q (blue).

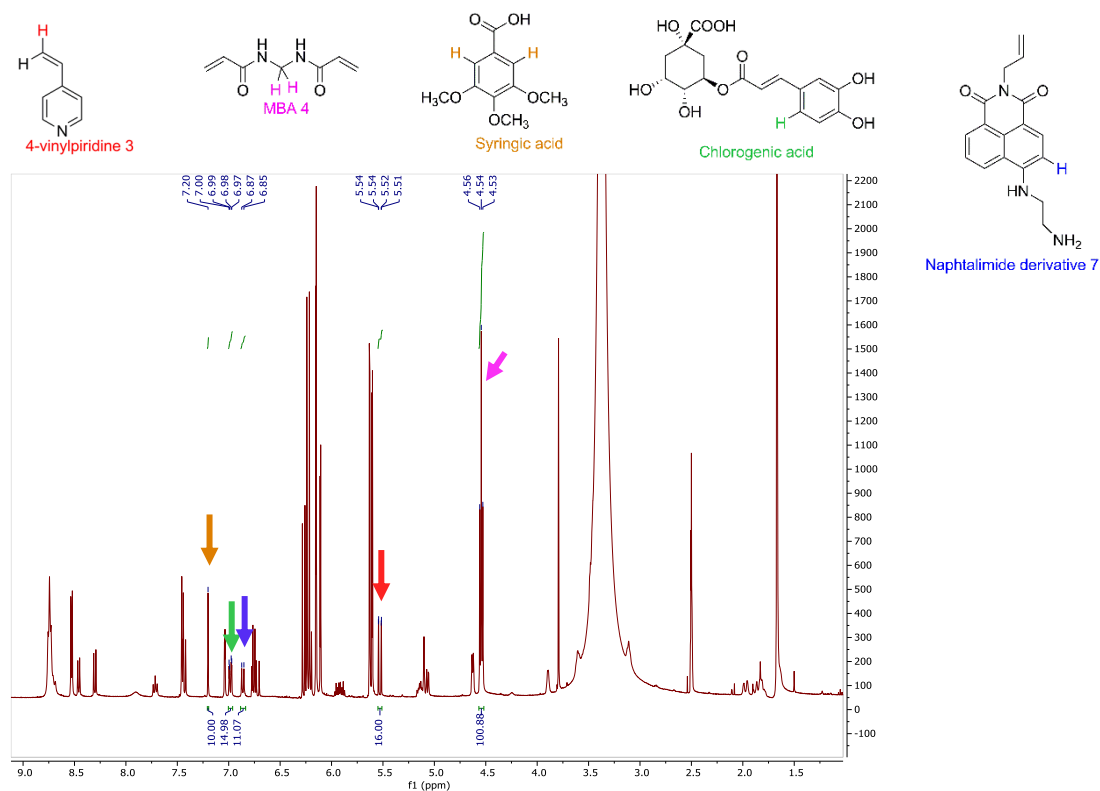


Figure S8: Mixture of monomers 4VP **3** and naphthalimide derivative **7**, cross-linker MBA **4**, syringic acid (internal standard) and 5-CQA in DMSO- d_6 before polymerization

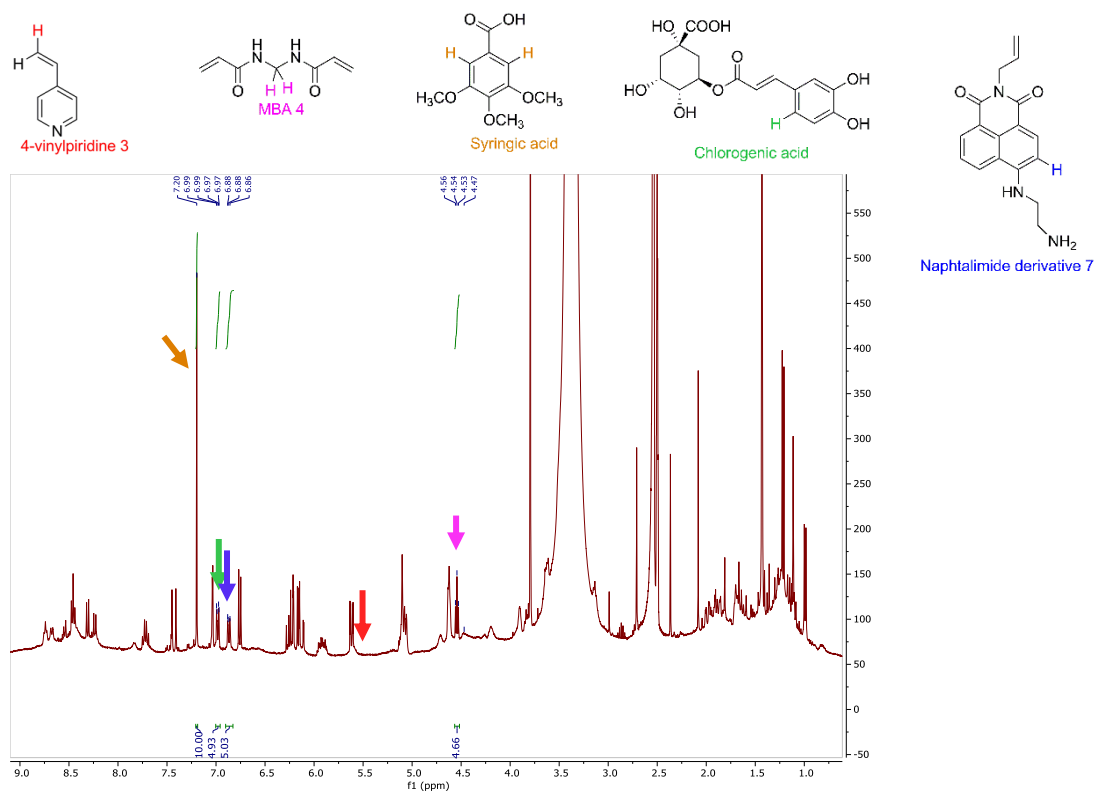


Figure S9: Mixture of monomers 4VP **3** and naphthalimide derivative **7**, cross-linker MBA **4**, syringic acid (internal standard) and 5-CQA in DMSO- d_6 after polymerization

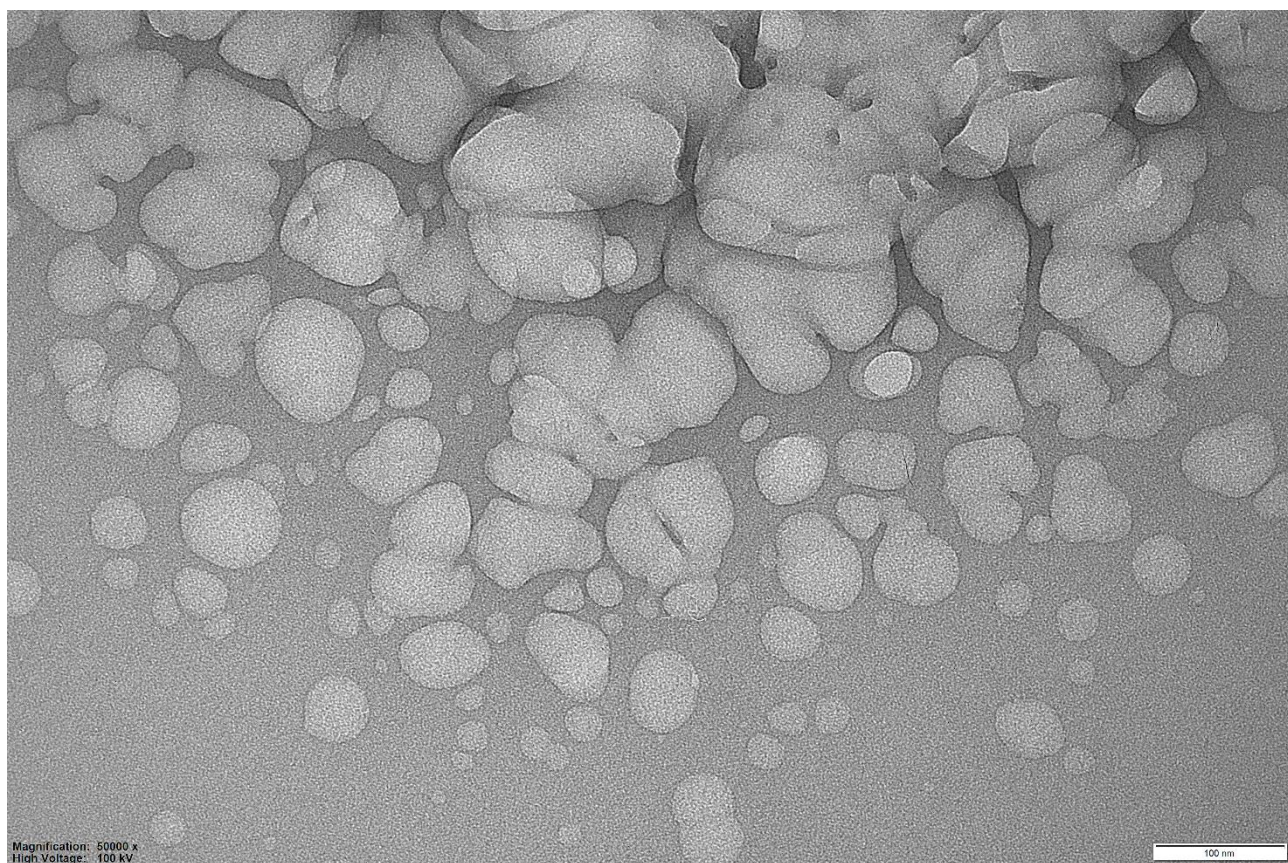


Figure S10: TEM image of fMIP03

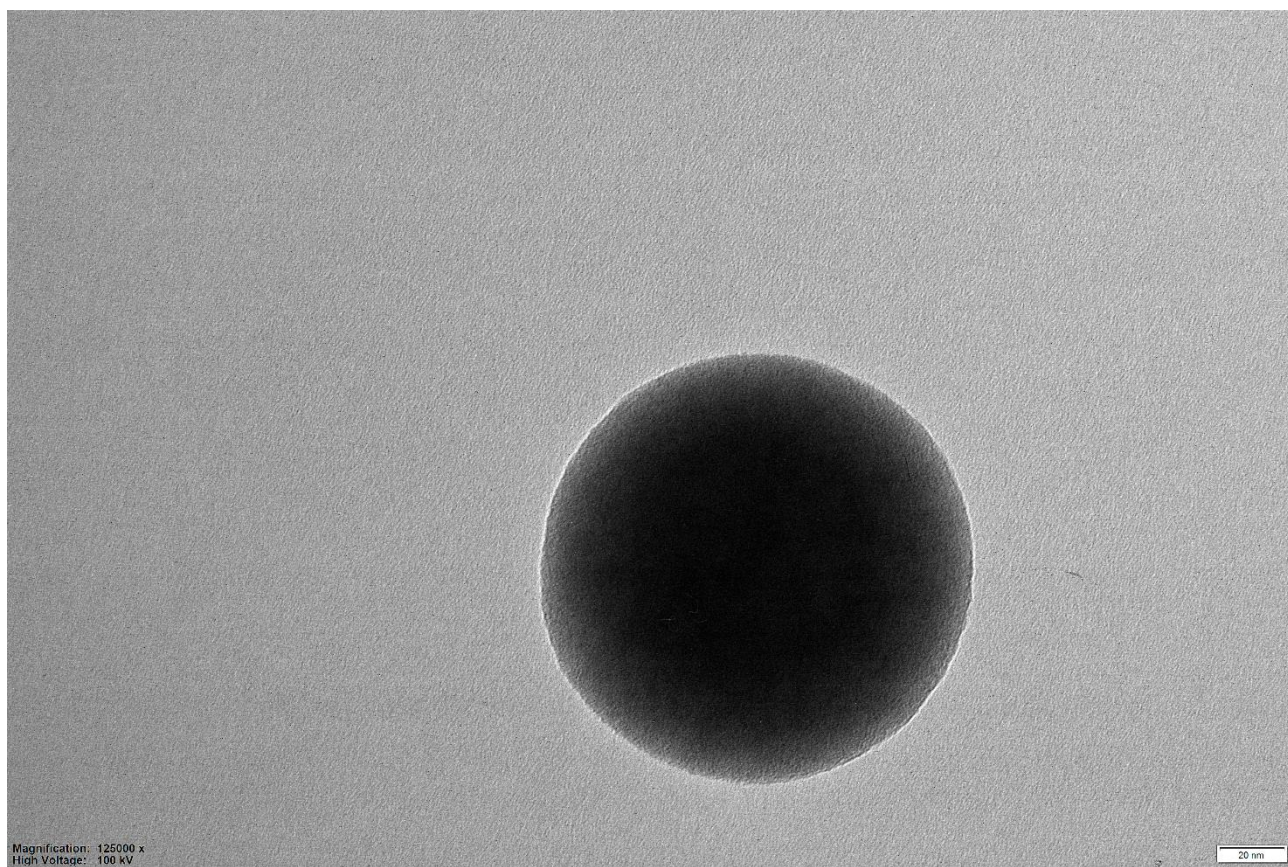


Figure S11: TEM image of fMIP03