

Supporting Information

A Direct Immunoassay Based on Surface-Enhanced Spectroscopy Using AuNP/PS-*b*-P2VP Nanocomposites

Moyra F. Vieira ^{1,2}, Ana Livia de Carvalho Bovolato ¹, Bruno G. da Fonseca ¹, Celly M. S. Izumi ²
and Alexandre G. Brolo ^{1,*}

¹ Department of Chemistry and Center for Advanced Materials and Related Technologies, University of Victoria, P.O. Box 3065, Victoria, BC V8W 3V6, Canada

² Departamento de Química, Instituto de Ciências Exatas, Universidade Federal de Juiz de Fora, Campus Universitário s/n, CEP, Juiz de Fora 36036-900, Brazil

* Correspondence: agbrolo@uvic.ca

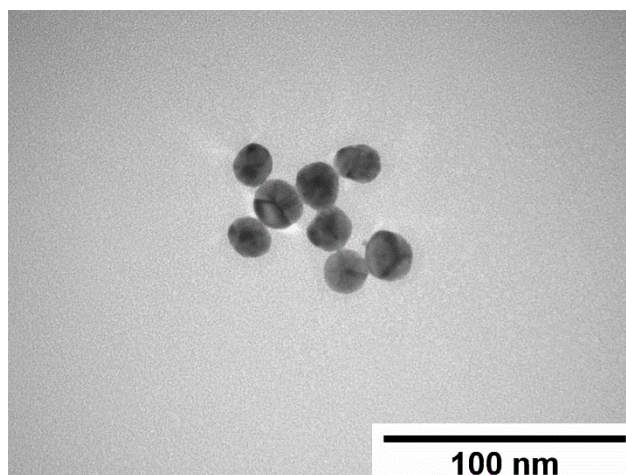


Figure S1. TEM image of the synthesized citrate stabilized gold NPs.

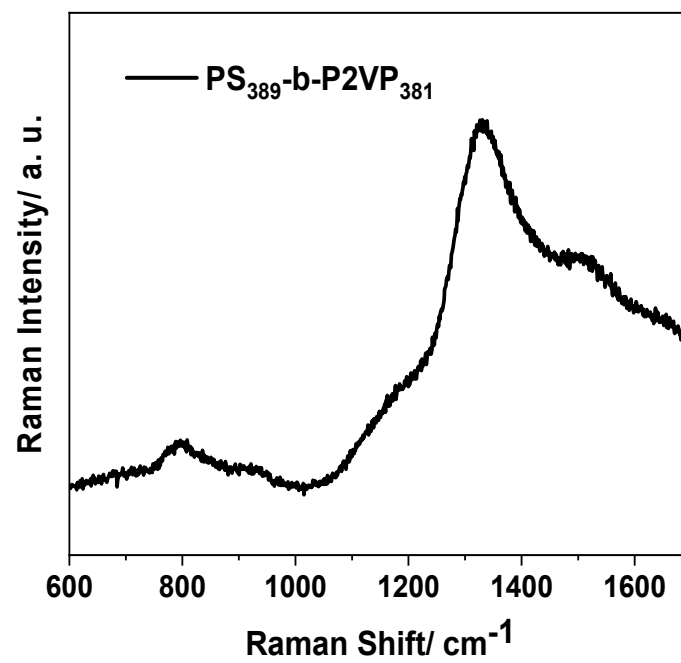


Figure S2. Raman spectra of the $\text{PS}_{1250}\text{-b-P2VP}_{1285}$ thin film.

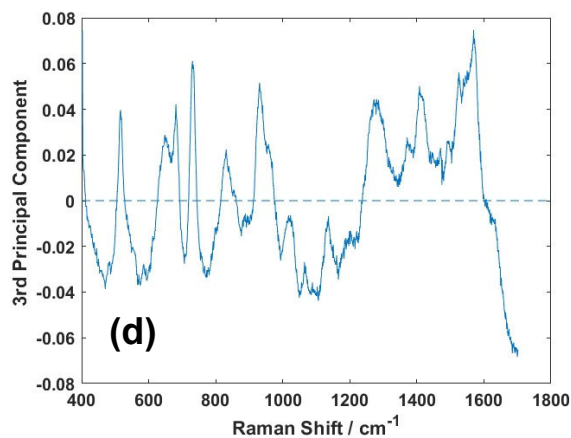
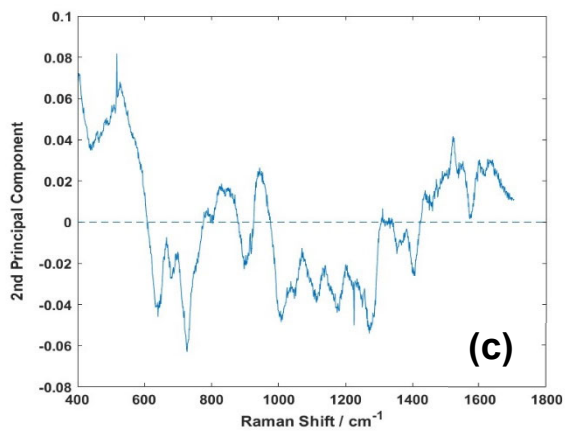
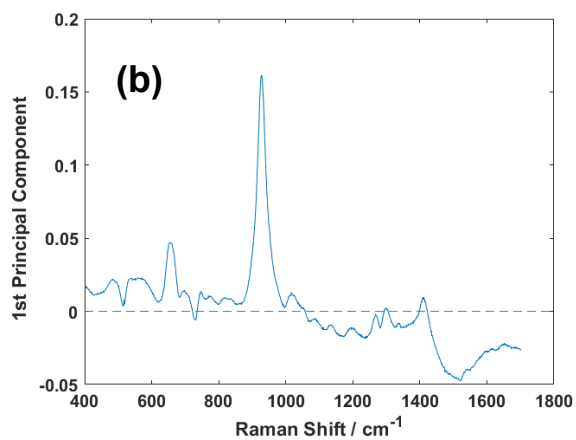
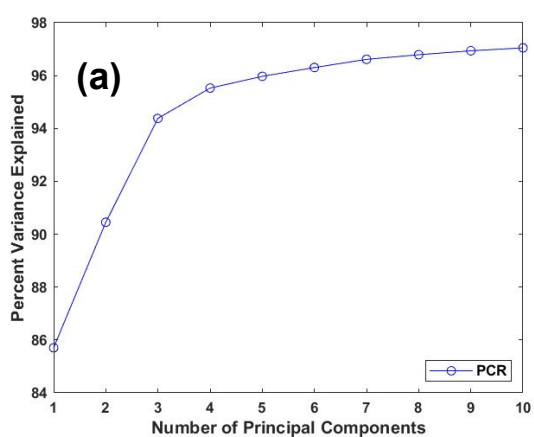


Figure S3. PCA of functionalization steps and IgG detection: (a) Explained Variation, (b) 1st principal component score, (c) 2nd principal component score, (d) 3rd principal component score.

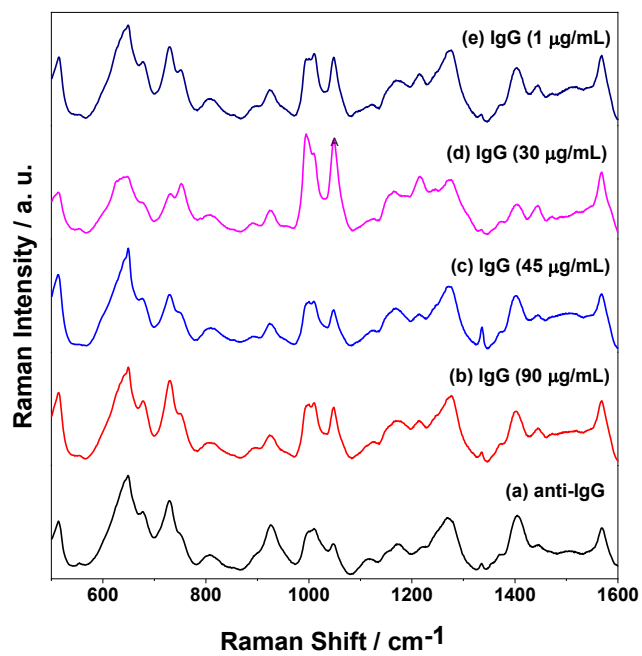


Figure S4. Average SERS spectra different concentrations of IgG (from 1 to 90 $\mu\text{g/mL}$).

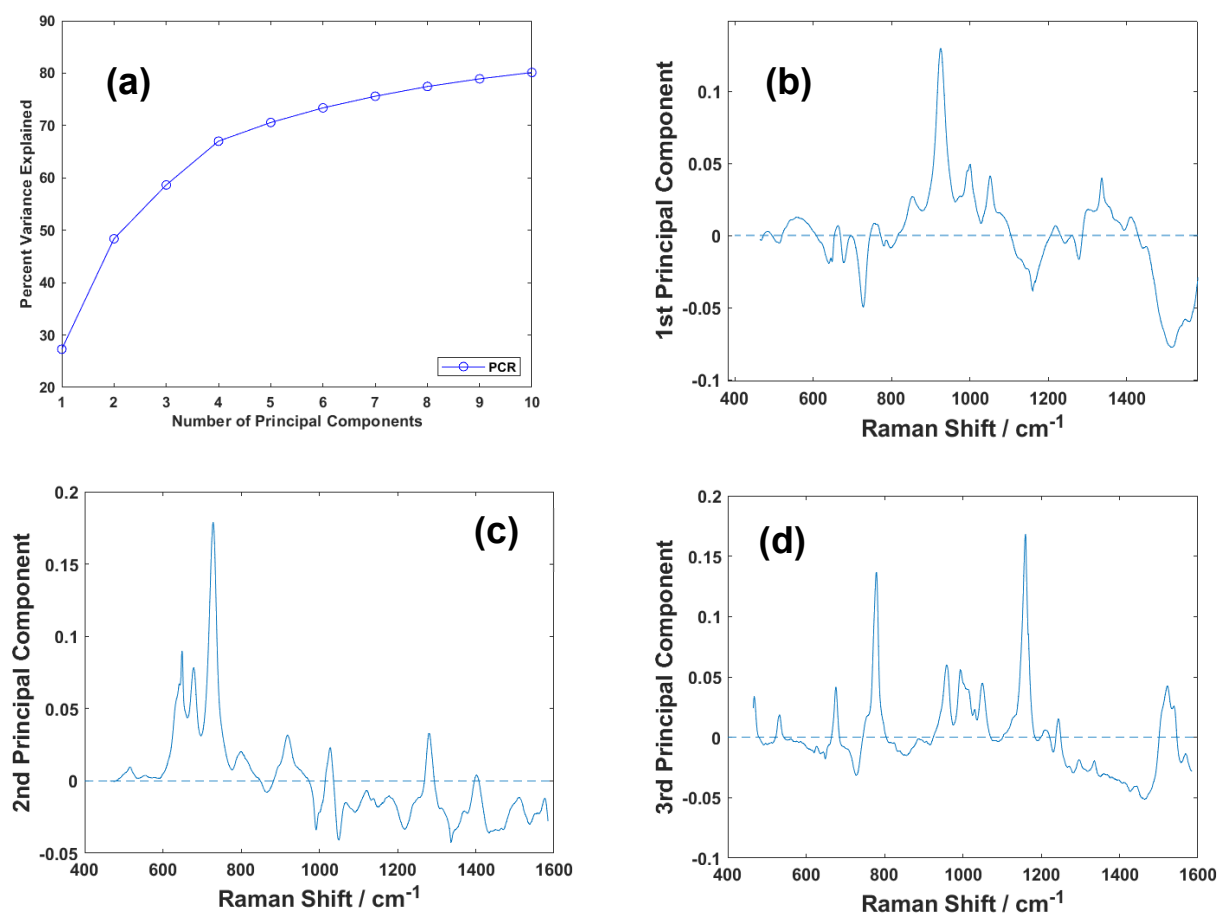


Figure S5. PCA of direct ATP immunoassay: (a) Explained Variation, (b) 1st principal component score, (c) 2nd principal component score, (d) 3rd principal component score.