

Activation of the dormant secondary metabolite production by introducing gentamicin-resistance in a marine-derived *Penicillium purpurogenum* G59

Yun-Jing Chai, Cheng-Bin Cui *, Chang-Wei Li, Chang-Jing Wu, Cong-Kui Tian and Wei Hua

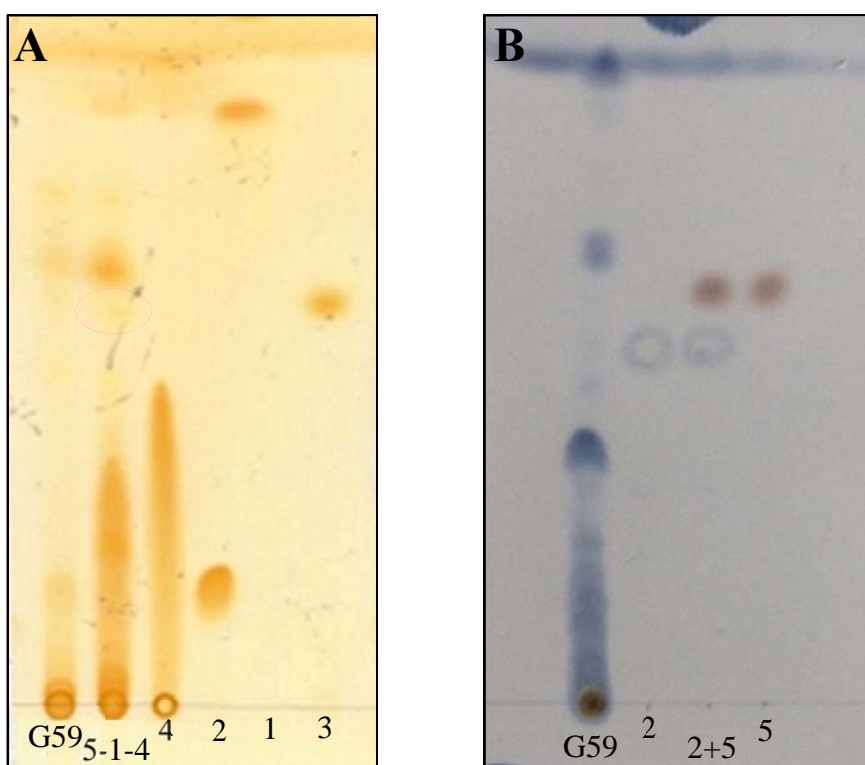
Prof. Dr. C.-B. Cui, Beijing Institute of Pharmacology and Toxicology, 27 Tai-Ping Road, Haidian District, Beijing 100850, China. E-mail: cuicb@sohu.com, cuicb@126.com; Tel./Fax.: +86-10-6821- 1656.

Supplementary Data S2 – TLC and HPLC Analysis for Compounds 1-7

Contents of Supplementary Data S2

1. TLC analysis for compounds 1–4 and for 2 and 5page S2-1
2. HPLC analysis for compounds 1, 2 and 4–7 page S2-1
 - 2.1. HPLC analysis for 1 by comparison with G59 extractpage S2-2
 - 2.2. HPLC analysis for 2 by comparison with G59 extractpage S2-3
 - 2.3. HPLC analysis for 4 by comparison with G59 extractpage S2-5
 - 2.4. HPLC analysis for 5 by comparison with G59 extractpage S2-7
 - 2.5. HPLC analysis for 6 by comparison with G59 extractpage S2-9
 - 2.6. HPLC analysis for 7 by comparison with G59 extractpage S2-11

1. TLC analysis for compounds 1–4 and for 2 and 5



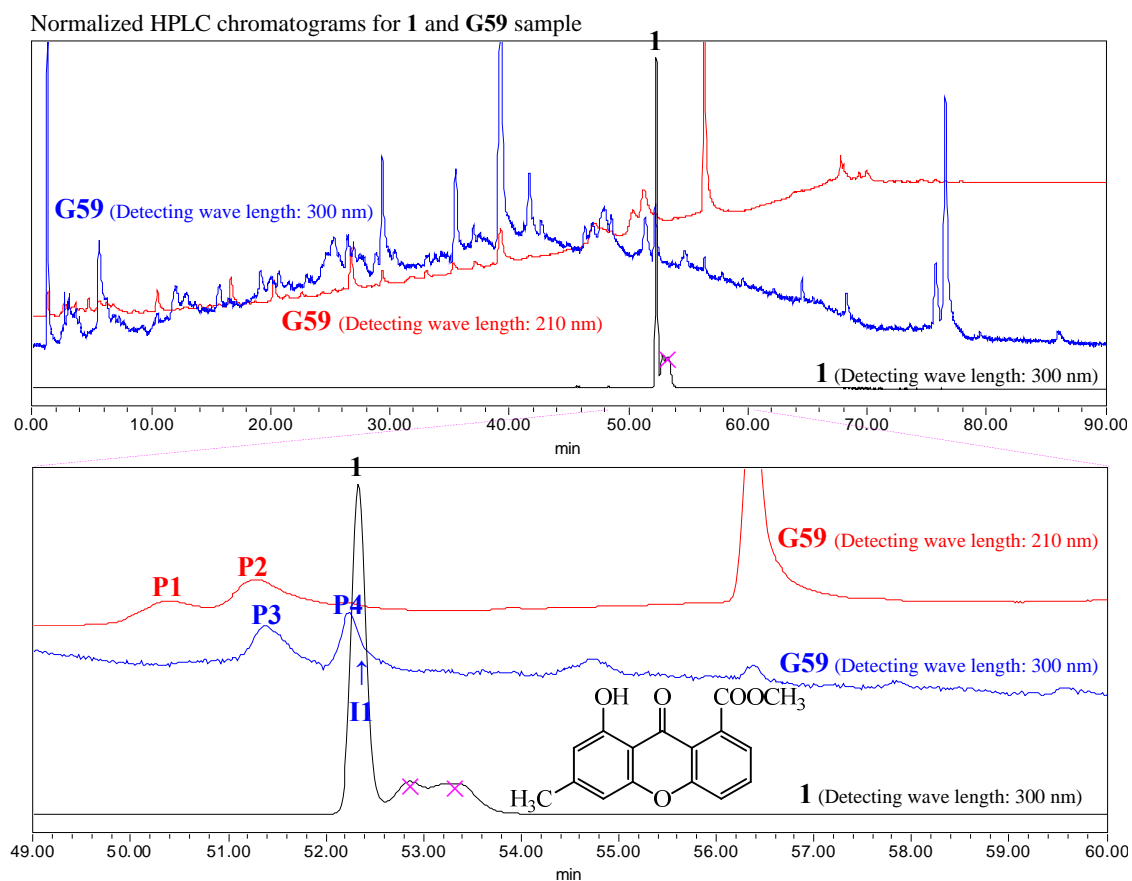
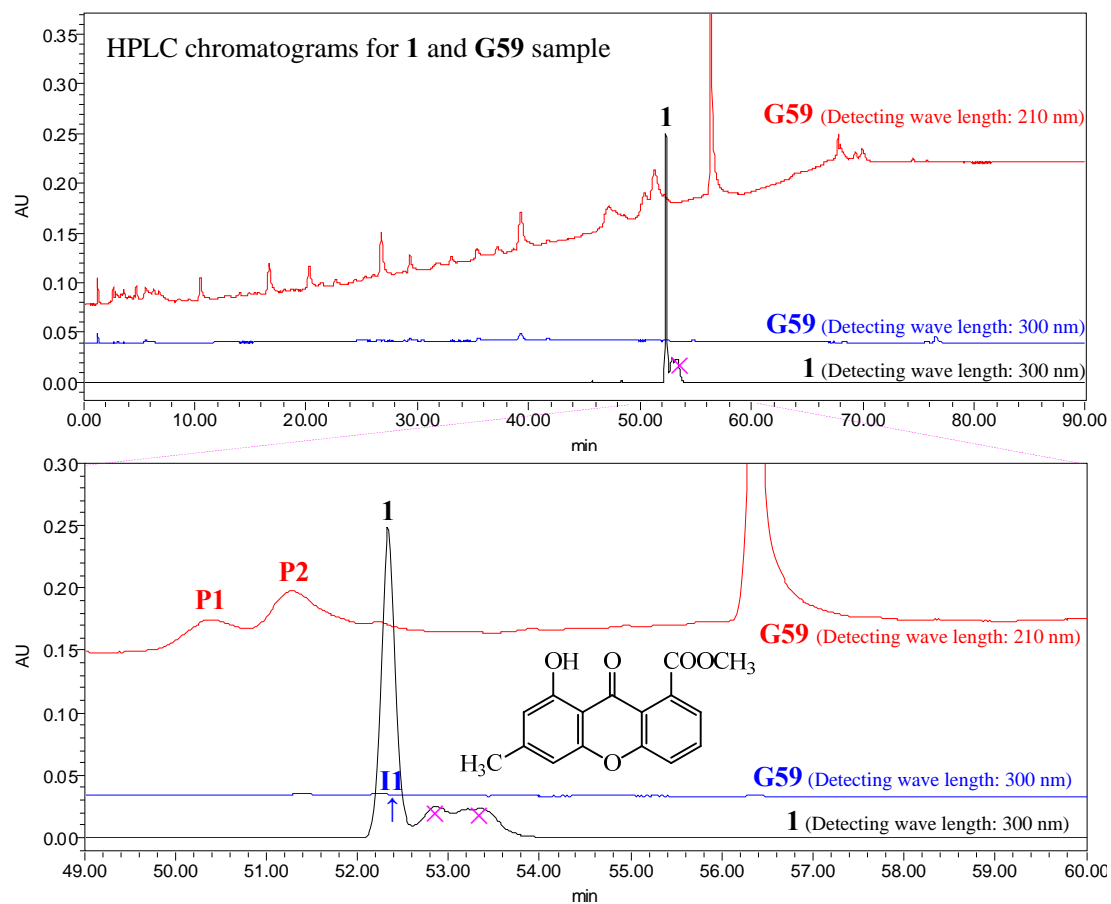
Silica Gel GF254 Plate TLC Chromatograms for Compounds 1–5

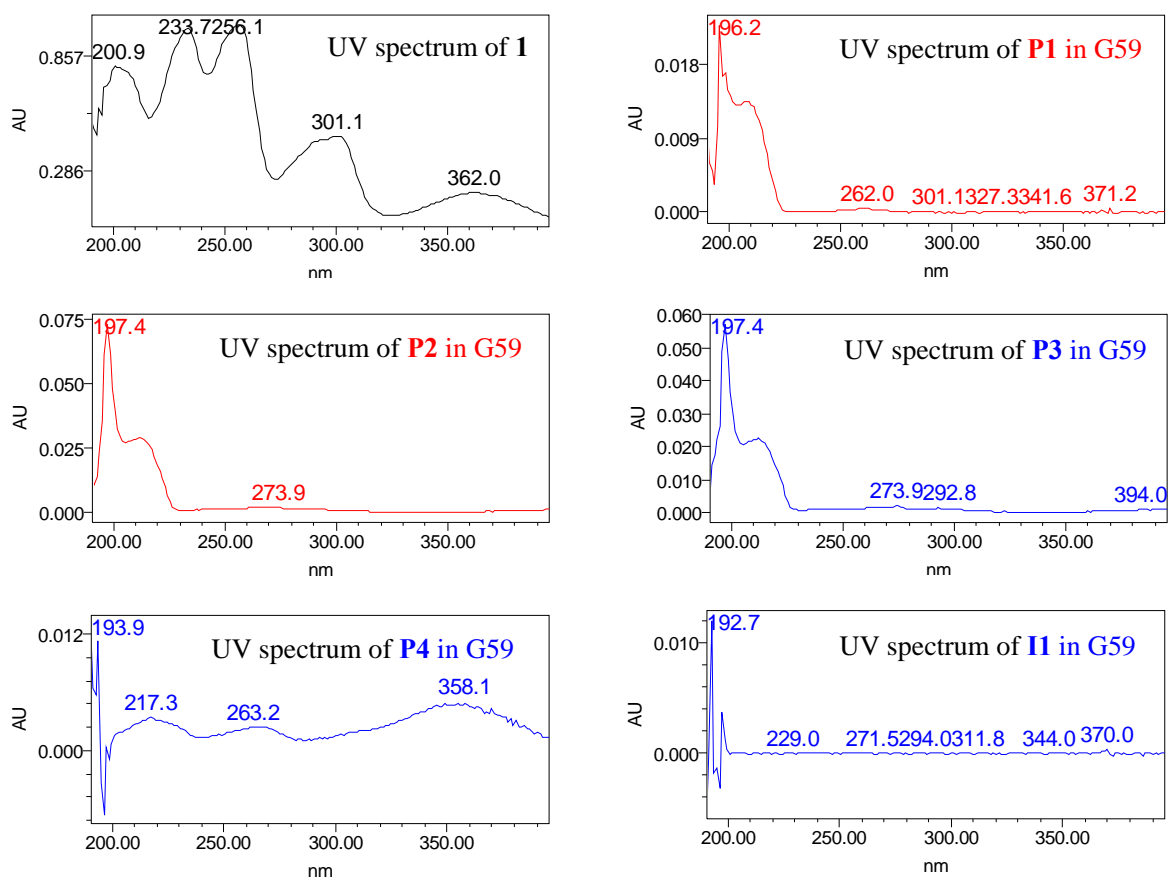
Developing solvent: A, CH₂Cl₂–Acetone 5:1; B, CHCl₃–MeOH 30:1

Detecting reagent: A, I (iodine); B, Vaughan's reagent

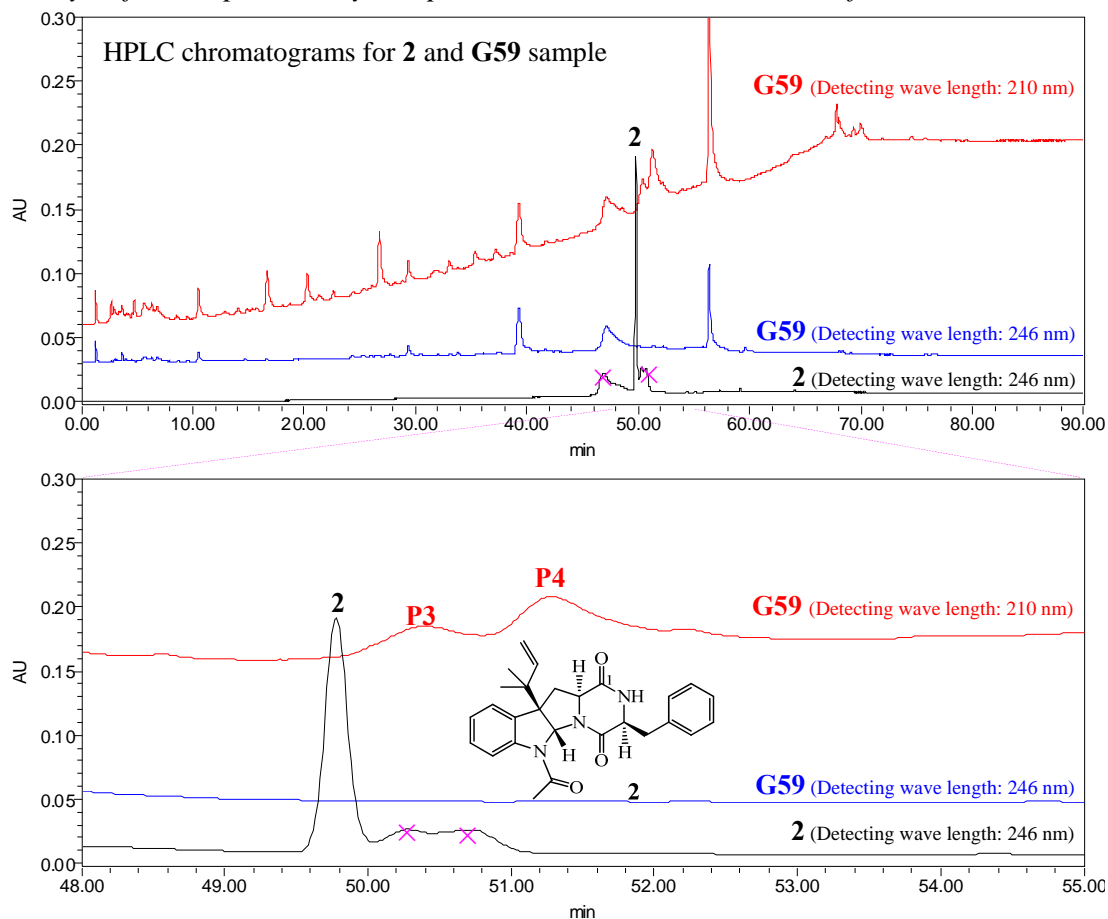
2. HPLC analysis for compounds 1, 2 and 4–7

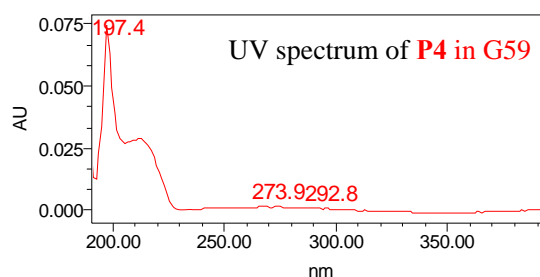
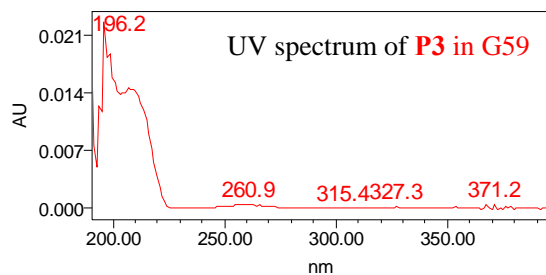
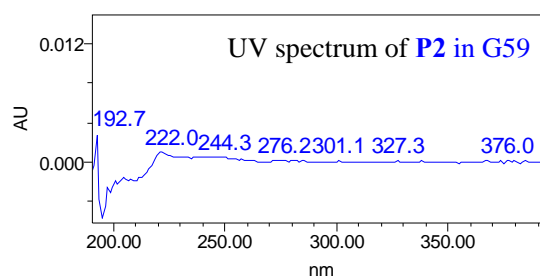
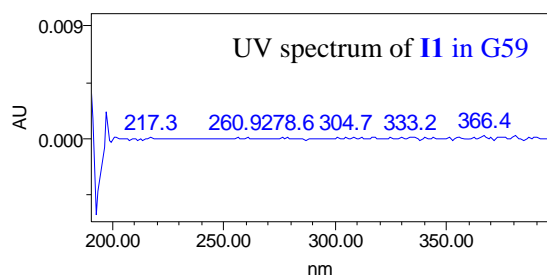
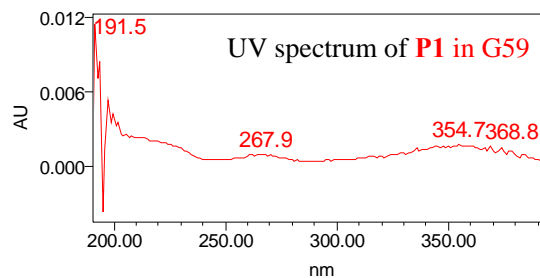
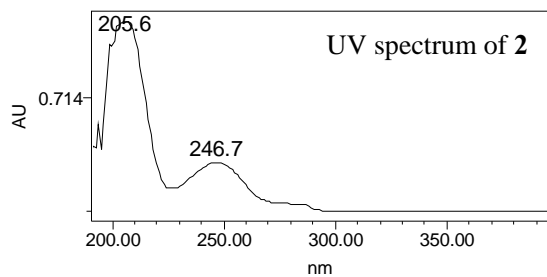
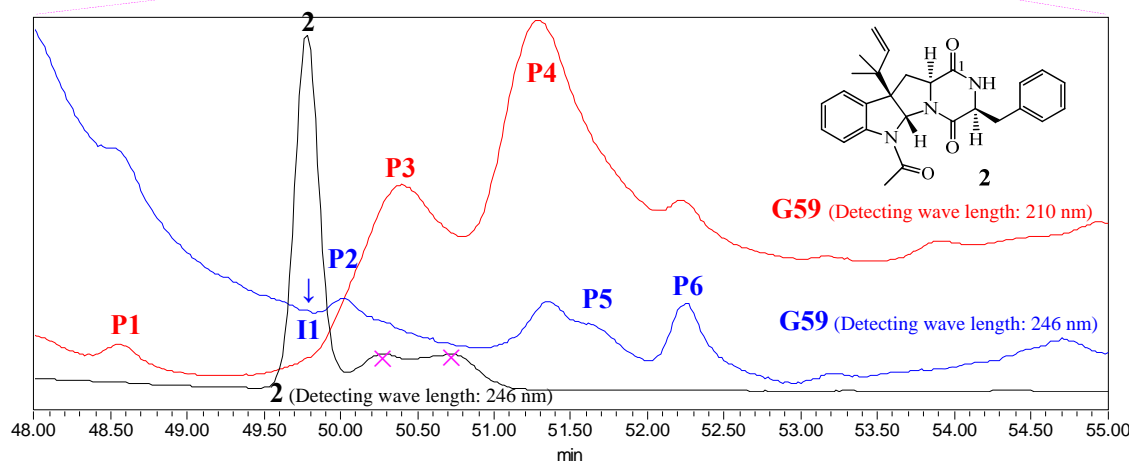
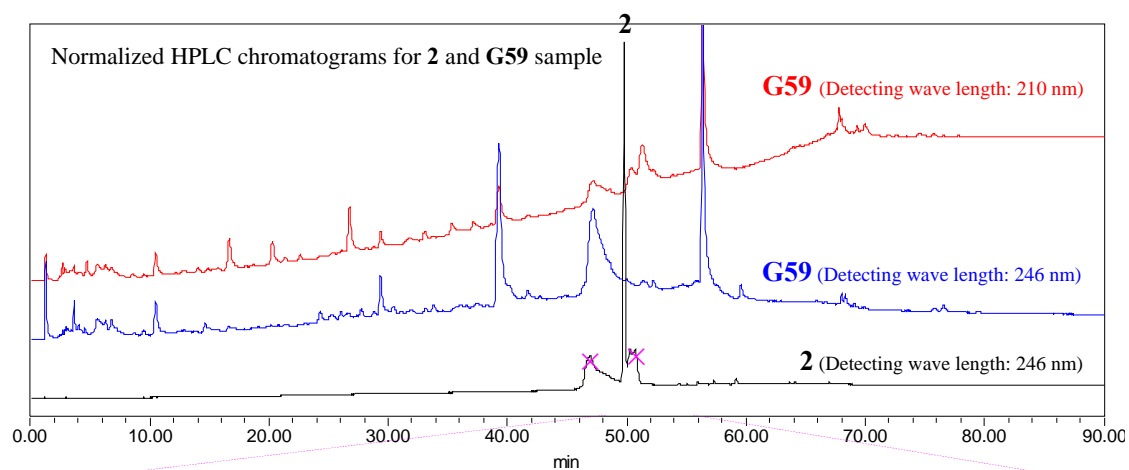
2.1 HPLC analysis for compound **1** by comparison with the EtOAc extract of G59 culture

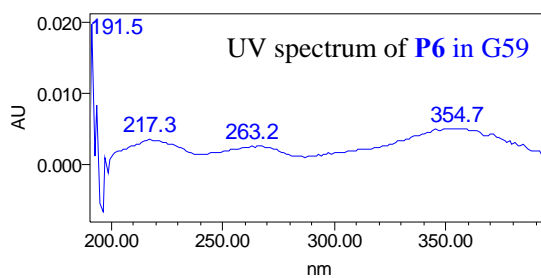
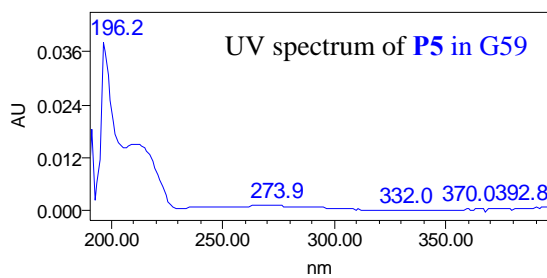




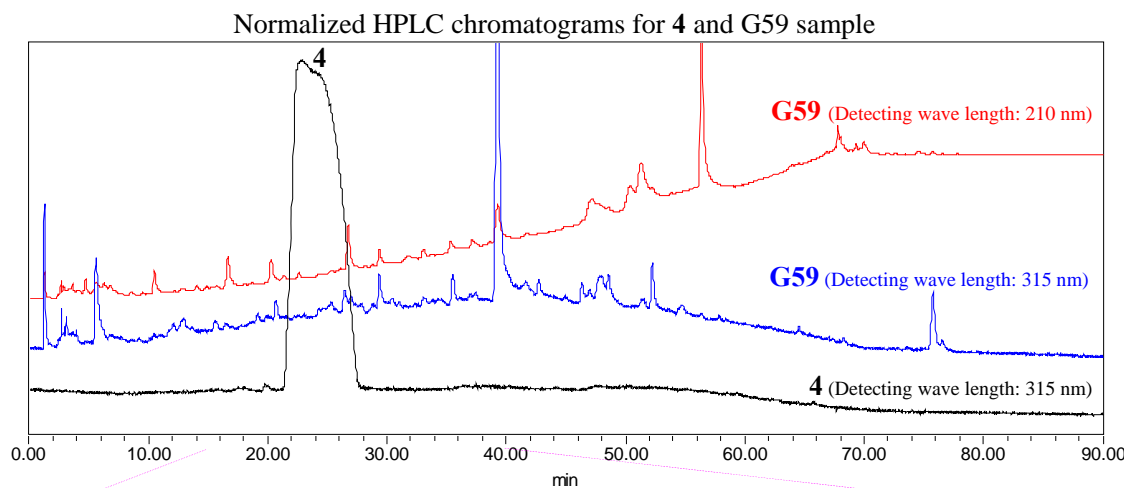
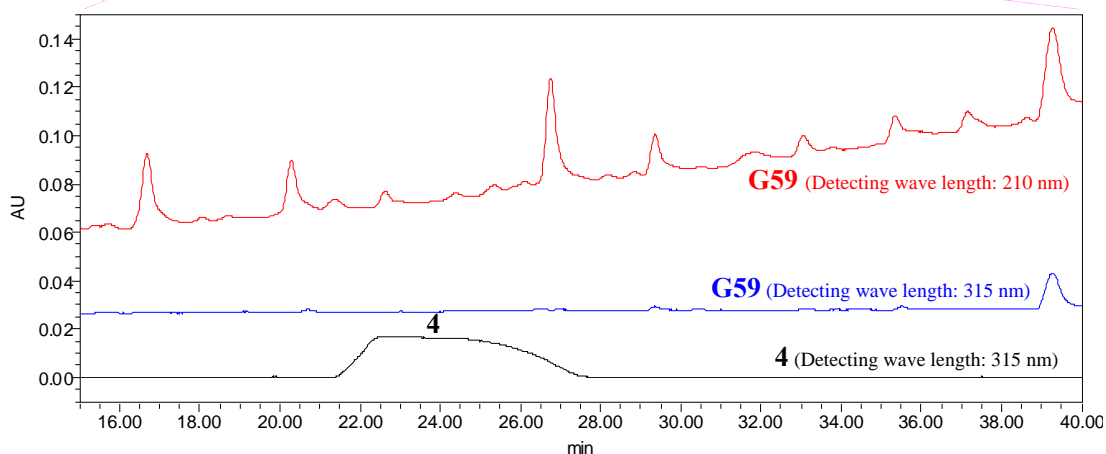
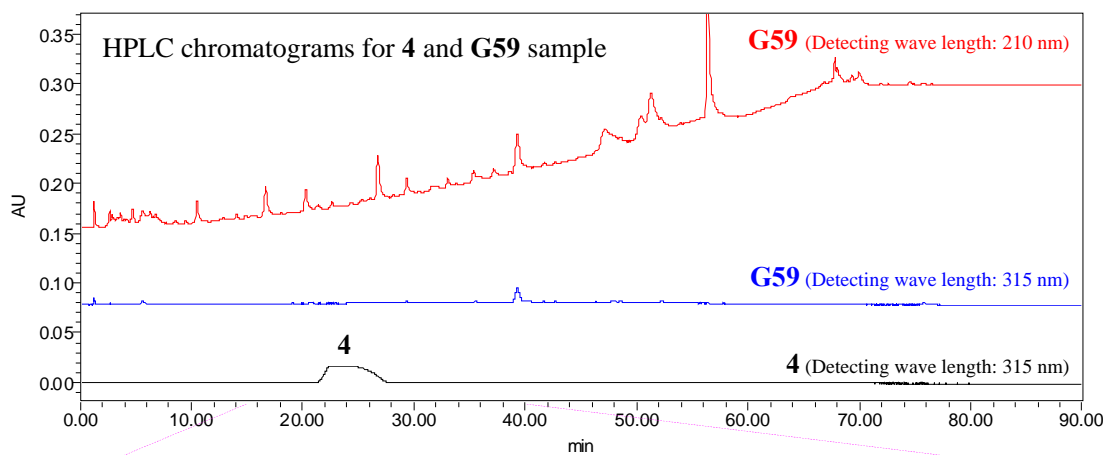
2.2 HPLC analysis for compound **2** by comparison with the EtOAc extract of G59 culture





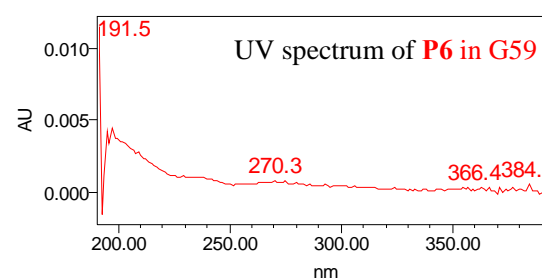
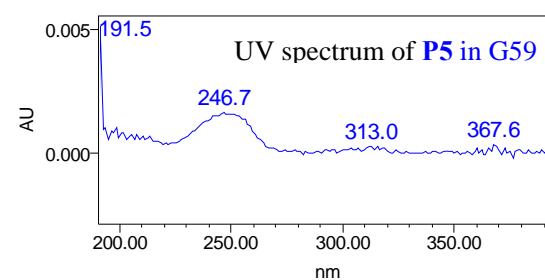
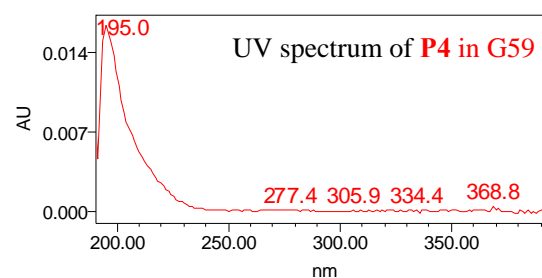
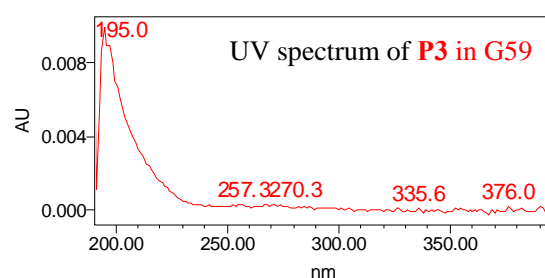
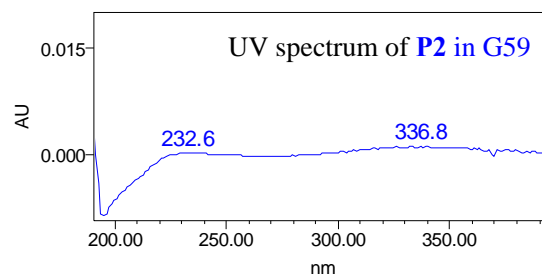
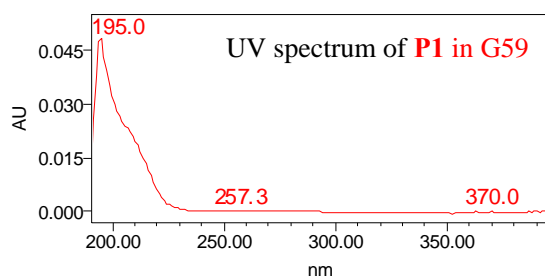
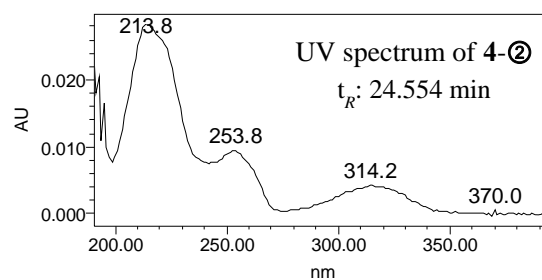
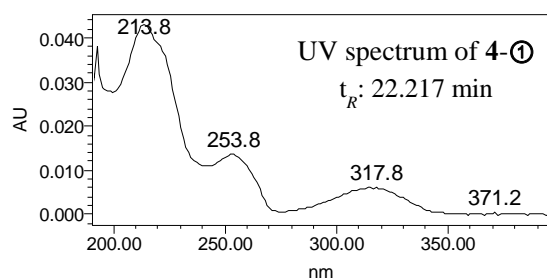
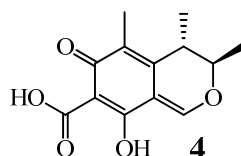
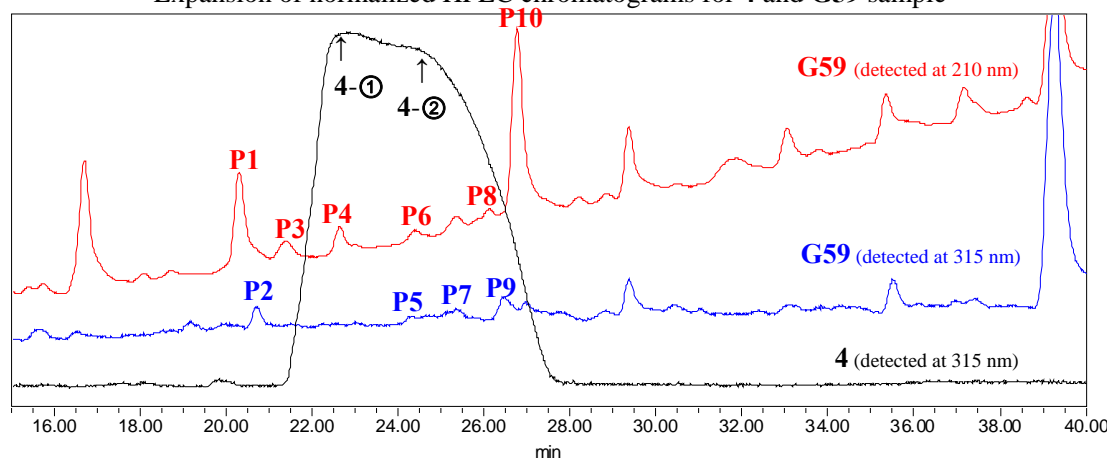


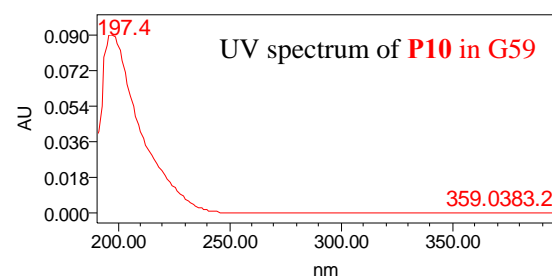
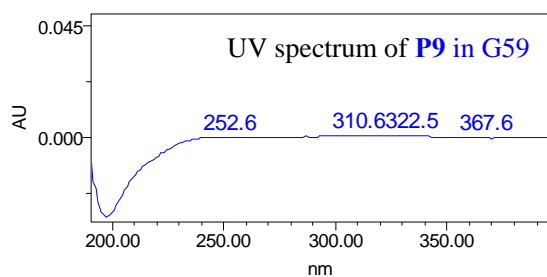
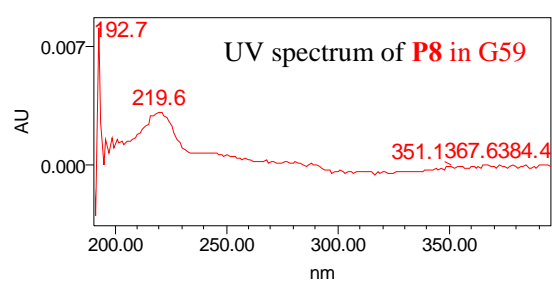
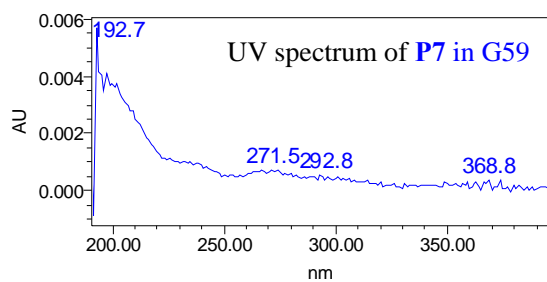
2.3 HPLC analysis for compound **4** by comparison with the EtOAc extract of G59 culture



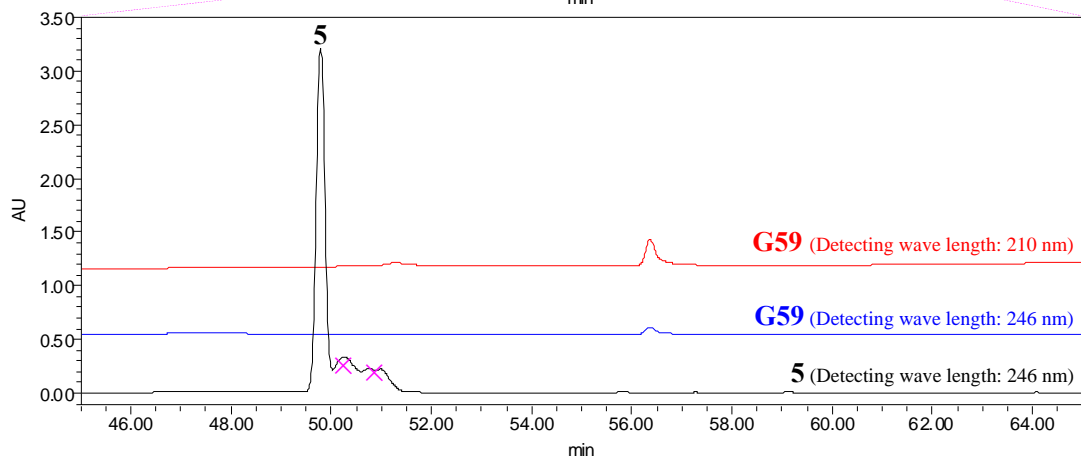
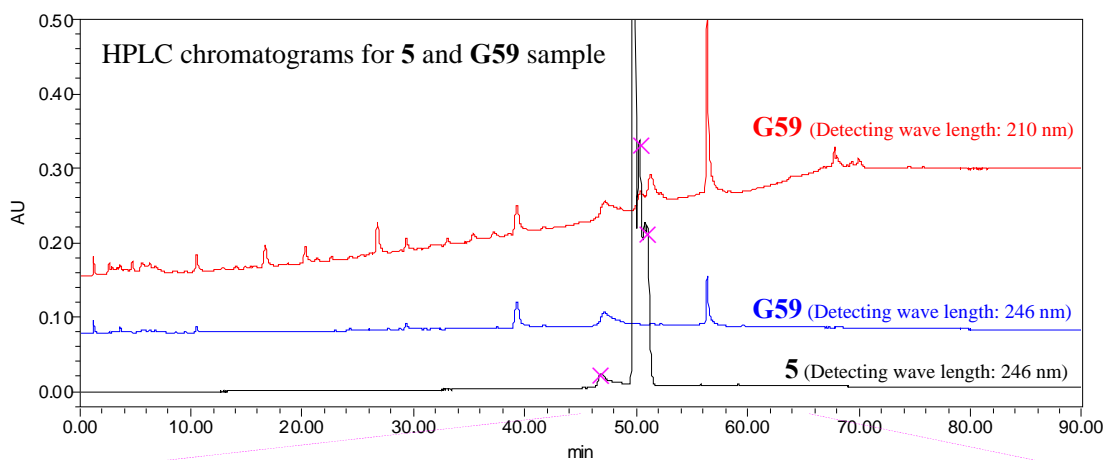
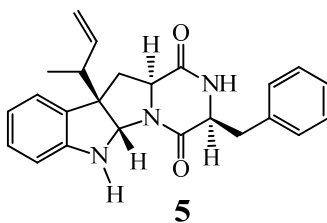
Expanded chromatograms see in next page

Expansion of normalized HPLC chromatograms for **4** and **G59** sample

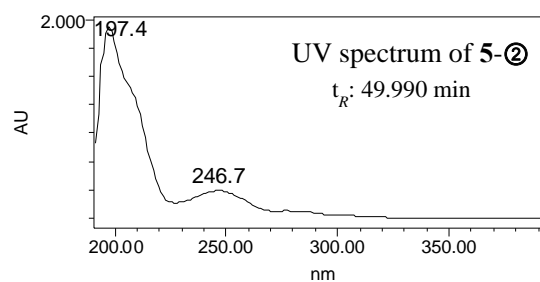
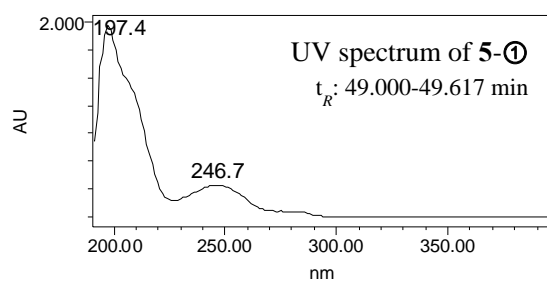
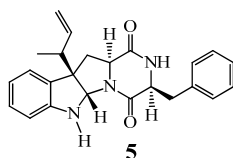
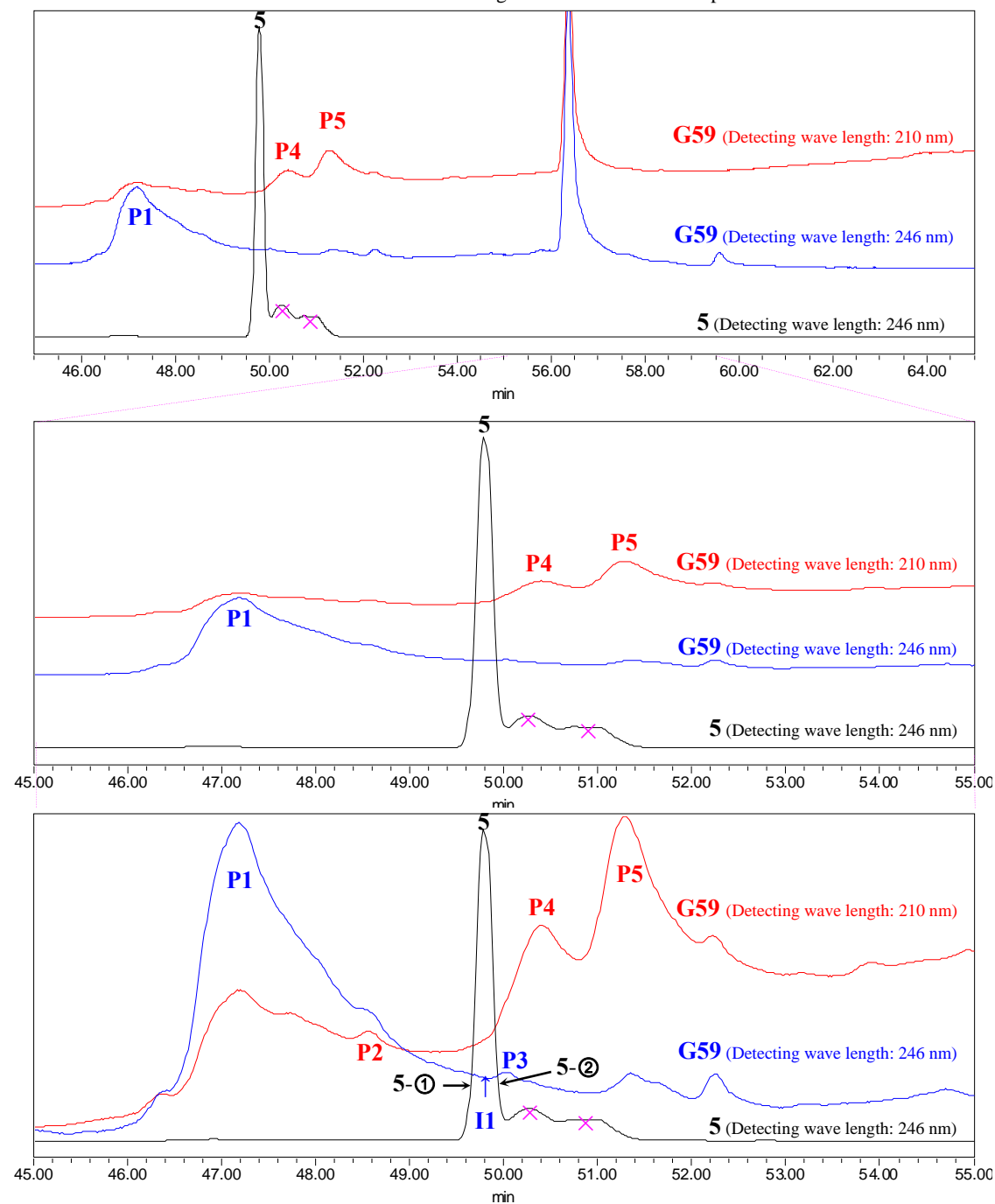


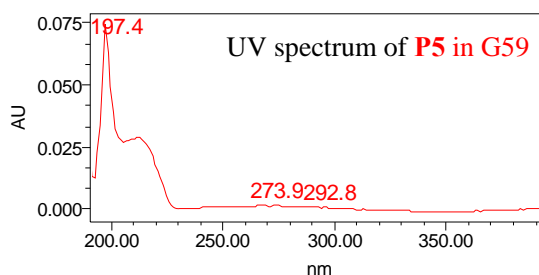
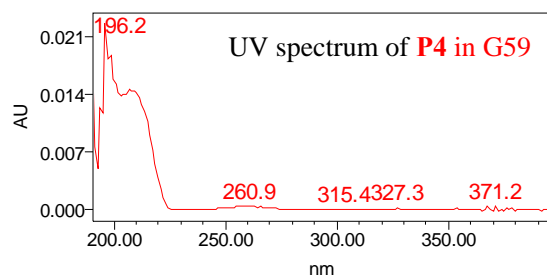
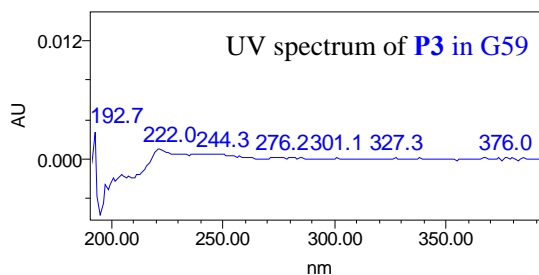
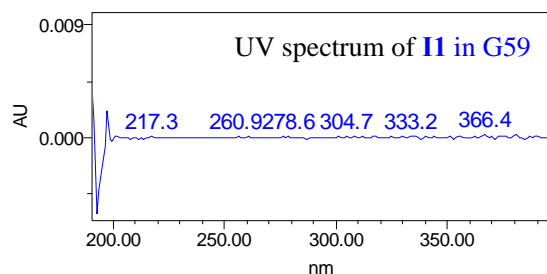
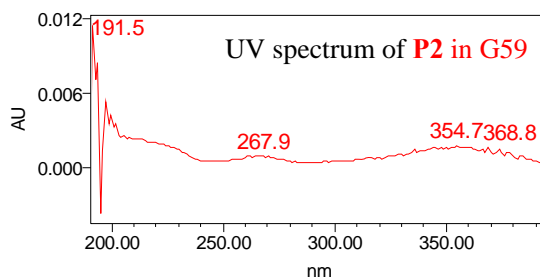
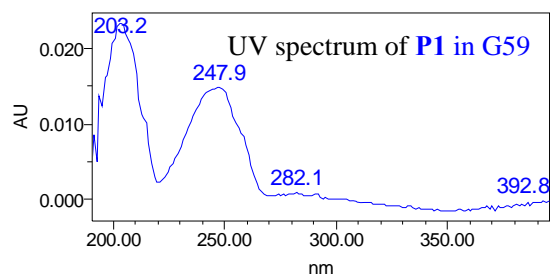


2.4 HPLC analysis for compound **5** by comparison with the EtOAc extract of G59 culture

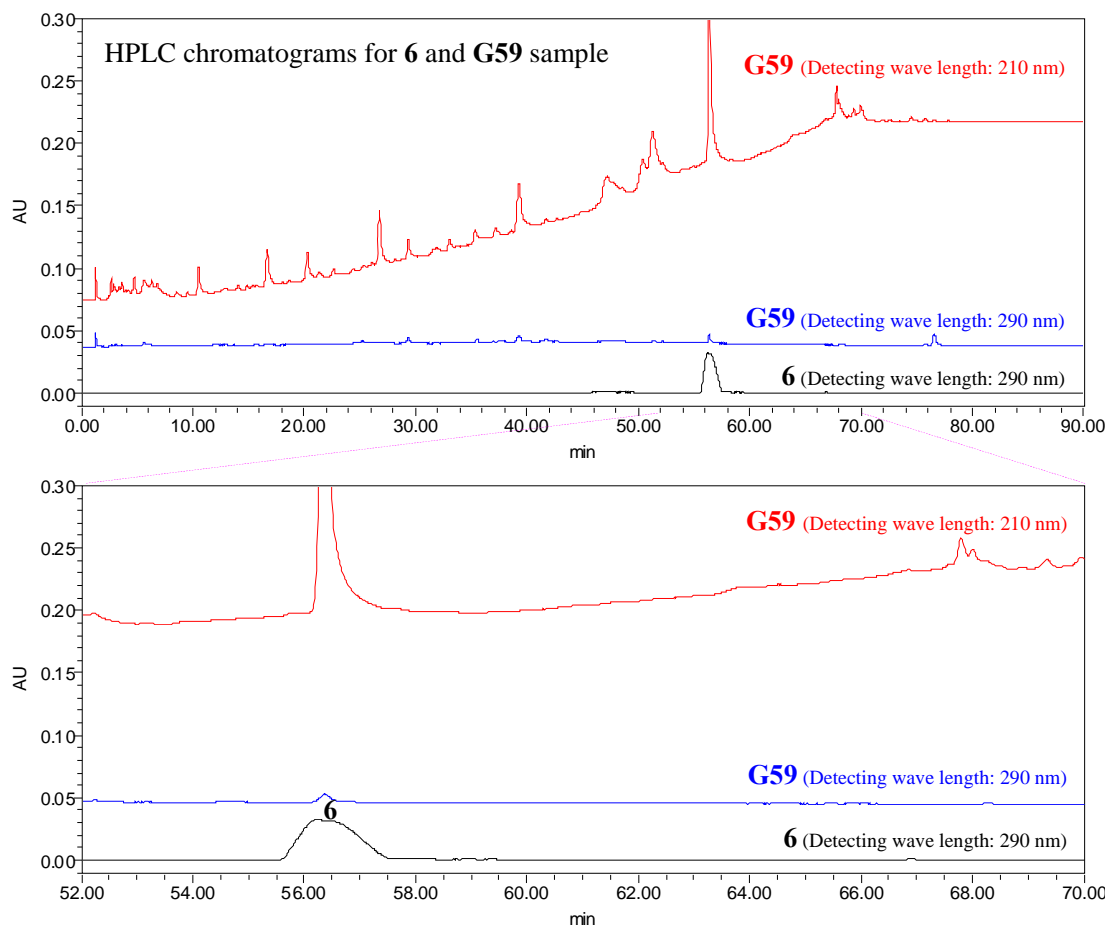


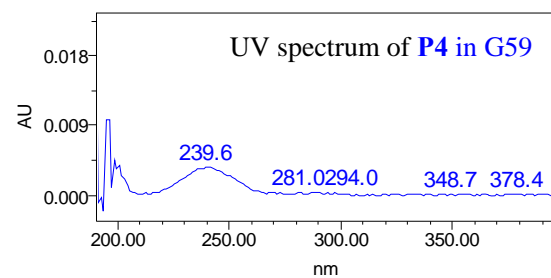
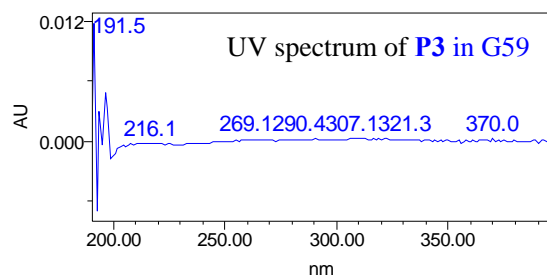
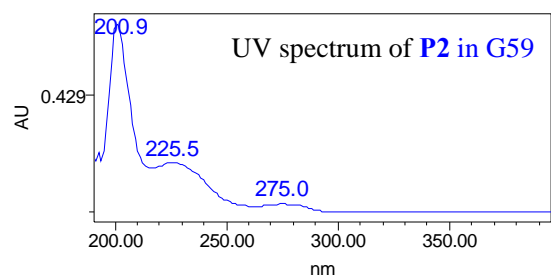
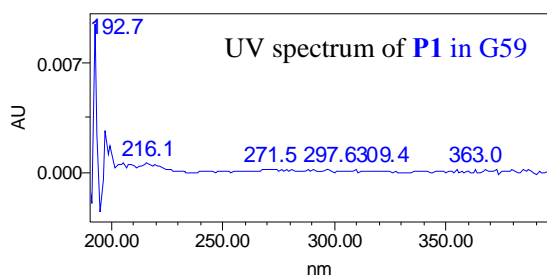
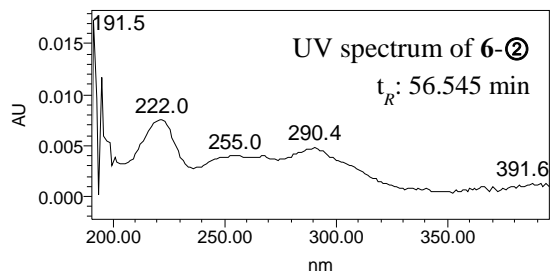
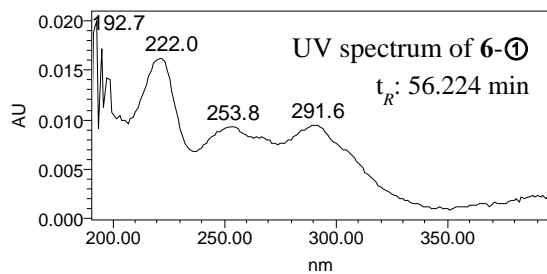
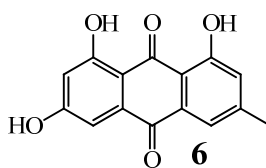
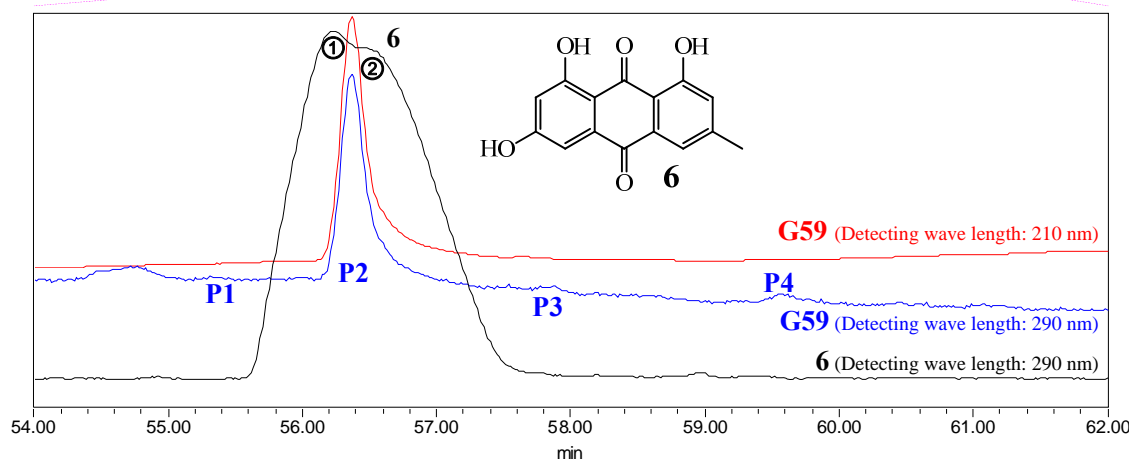
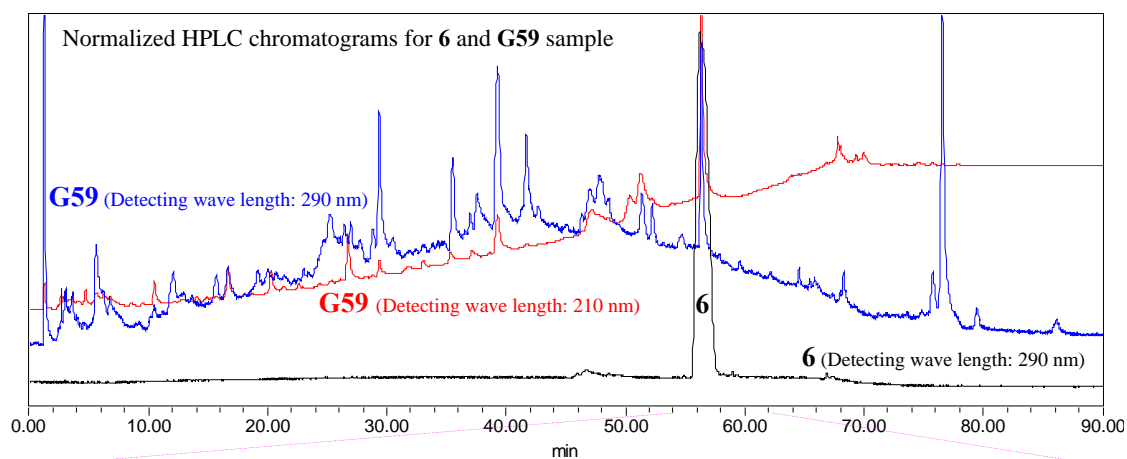
Normalized HPLC chromatograms for **5** and **G59** sample



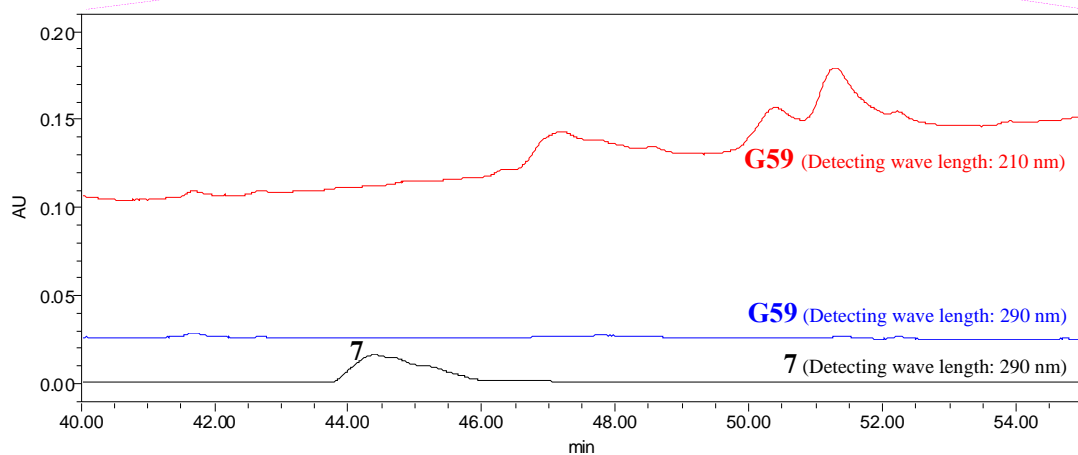
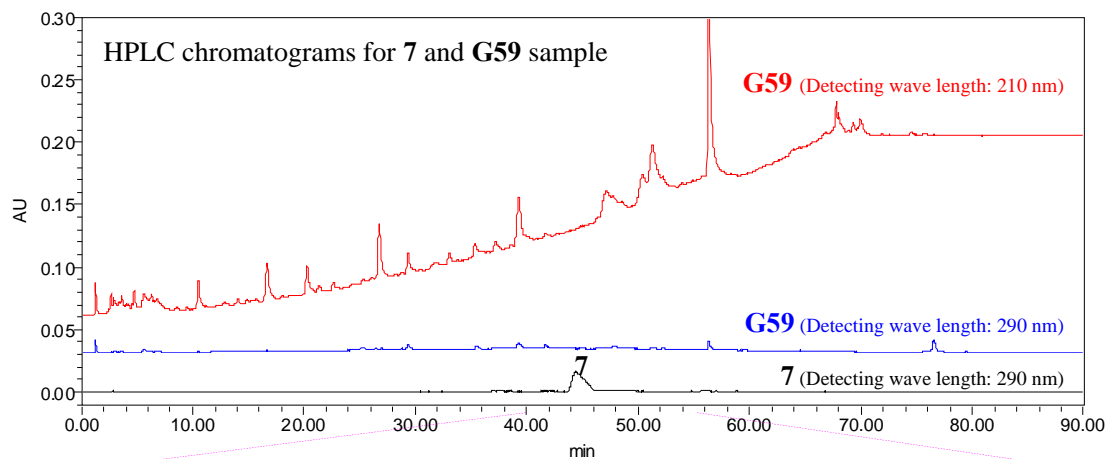


2.5 HPLC analysis for compound **6** by comparison with the EtOAc extract of G59 culture

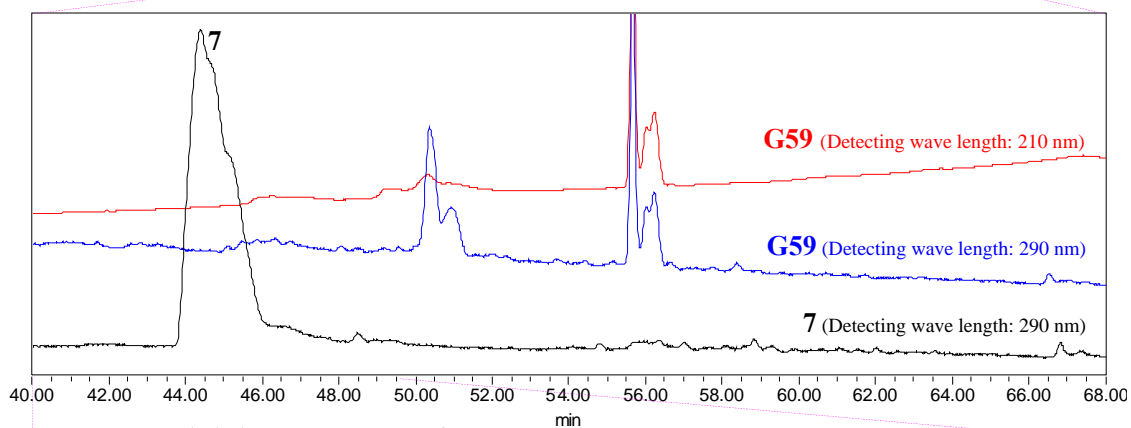
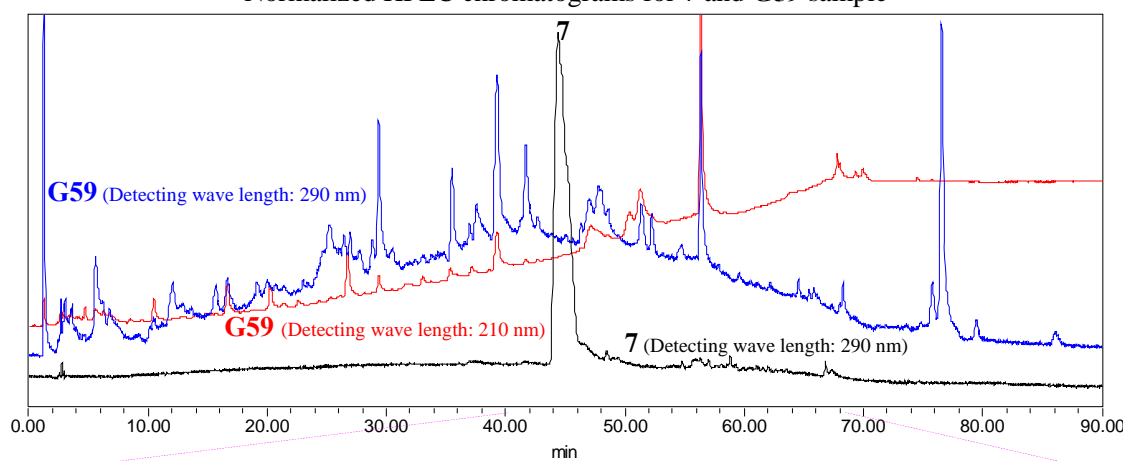




2.6 HPLC analysis for compound **7** by comparison with the EtOAc extract of G59 culture



Normalized HPLC chromatograms for **7** and G59 sample



Expanded chromatograms see in next page

Expansion of normalized HPLC chromatograms for **7** and **G59** sample

