

Figure S1: Scanning electron micrographs of the Au substrates coated with a polydopamine (pDA layer), a pDA layer plus polyurethane (PU), and a pDA layer plus the CyanoCoating. The residual debris on the CyanoCoating were identified as calcium and magnesium salt crystals using energy dispersive X-ray spectroscopy (EDS), and are most probably remains from the *Cyanothece*'s culture medium (scale bars - 20 μm).

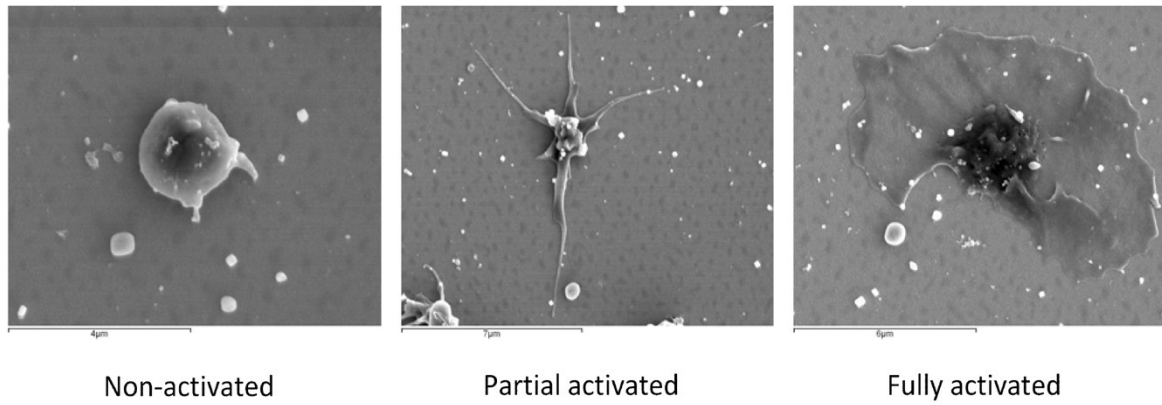


Figure S2: Representative SEM micrographs of platelets adhered to polyurethane (PU) and categorized by activation state: Non-activated, Partially activated and Fully activated (scale bars: A - 4 μm , B - 7 μm , C - 6 μm).



Figure S3: Schematic representation of samples characterized in this study: gold substrates coated with **(A)** a polydopamine (pDA) layer, **(B)** a pDA layer plus polyurethane and **(C)** a pDA layer plus CyanoCoating.