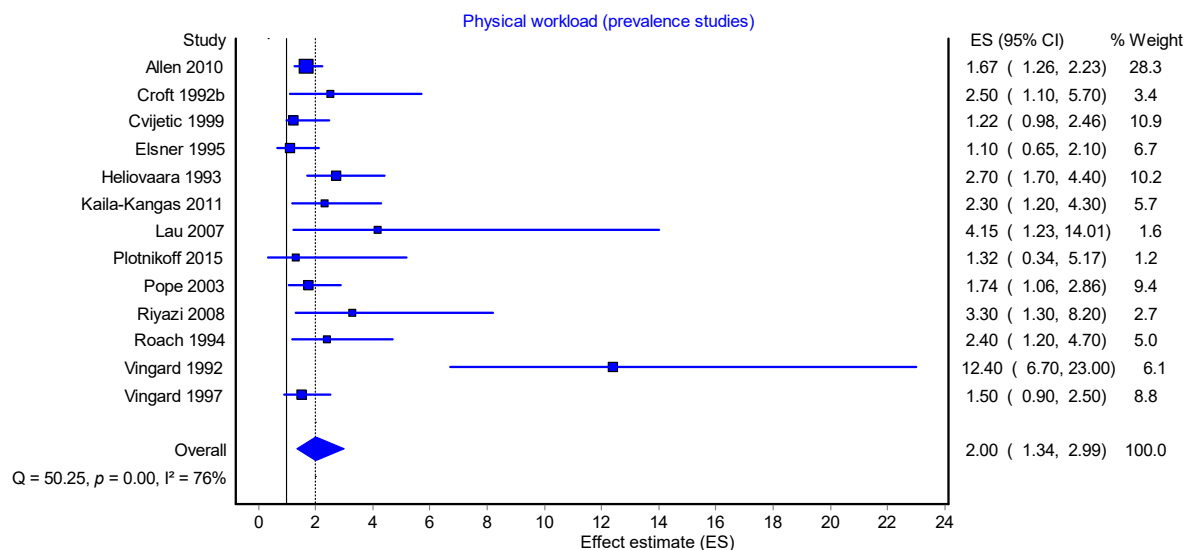


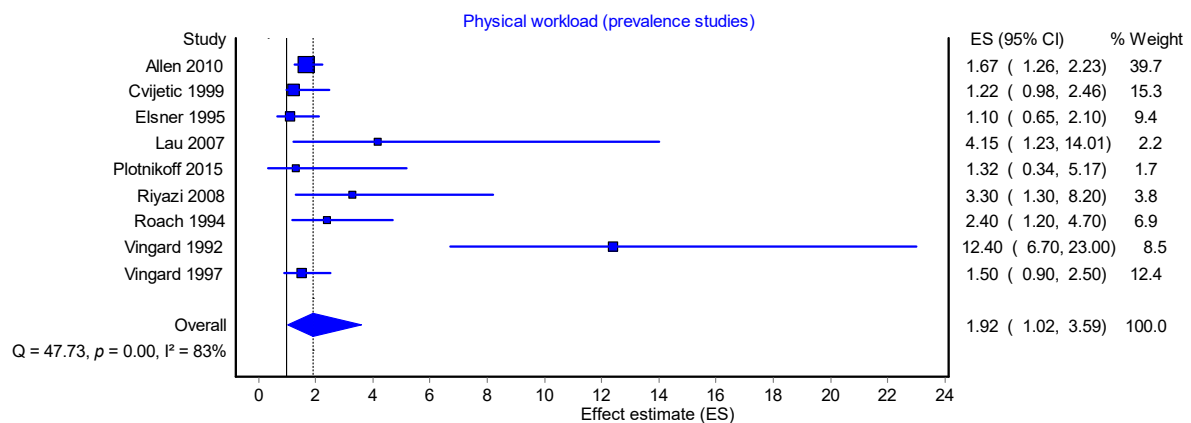
File S2. Forest plots of all meta-analyses carried out for Table 4 (all studies)

Heavy lifting/load handling and hip osteoarthritis (see Table 4)

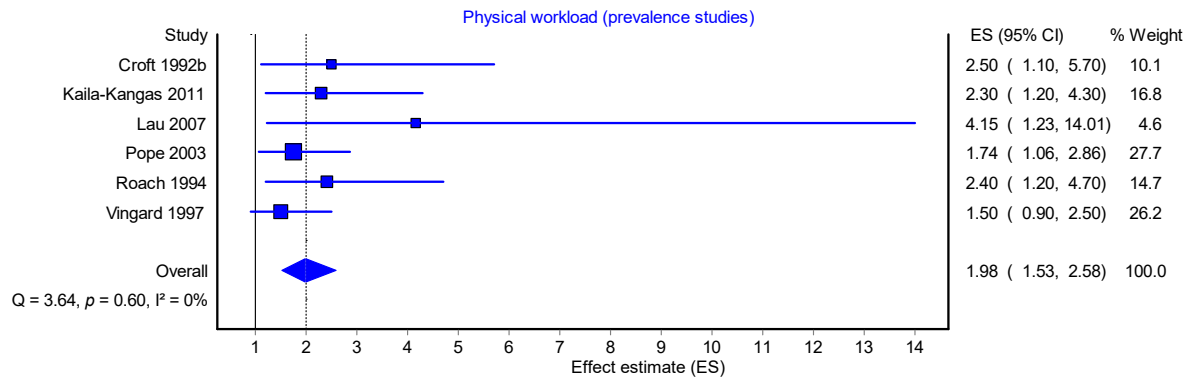
a. All prevalence studies, n=13



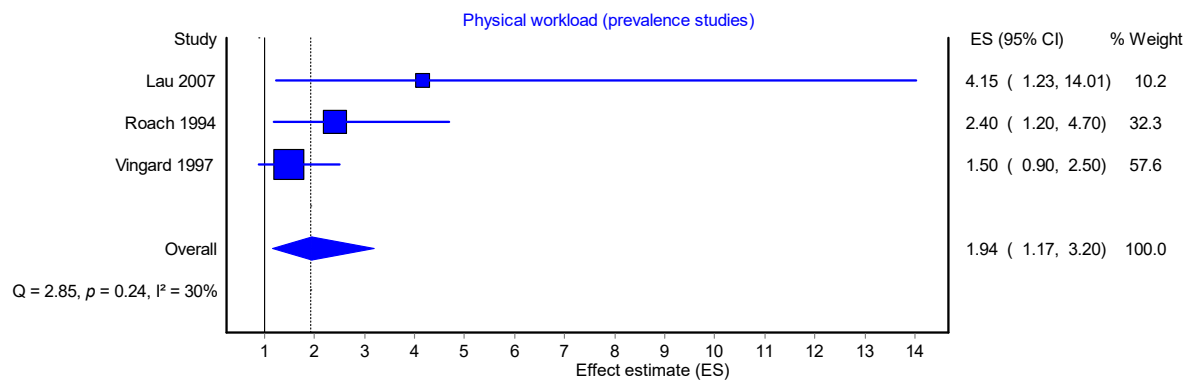
b. Prevalence studies, ExpoScore=all, DiagScore=3, n=9



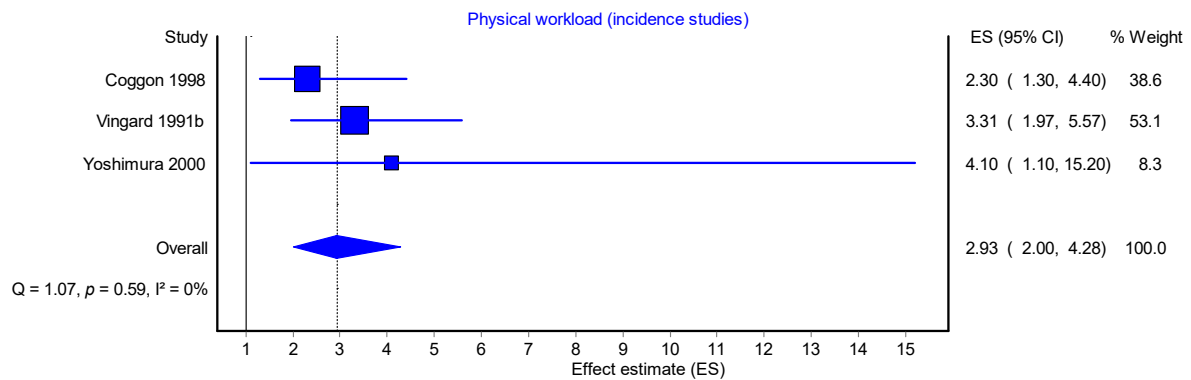
c. Prevalence studies, ExpoScore \geq 3, DiagScore=all, n=6)



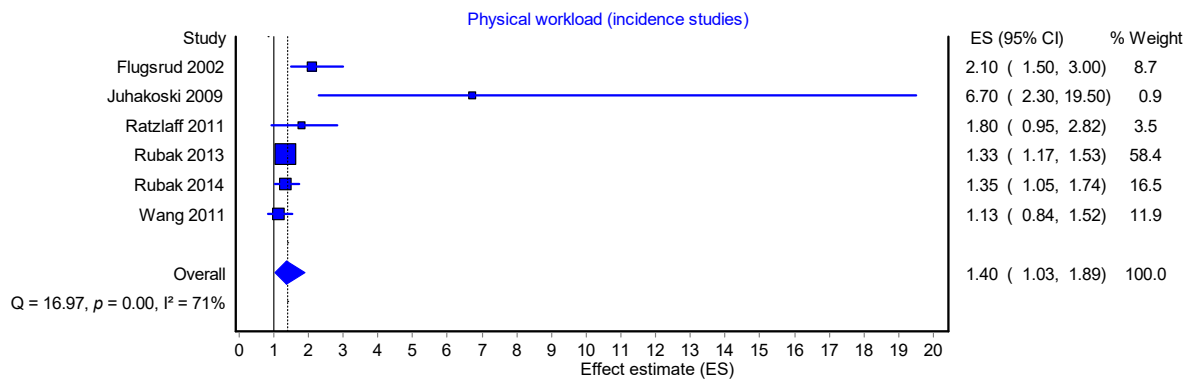
d. Prevalence studies, ExpoScore \geq 3, DiagScore=3, n=3)



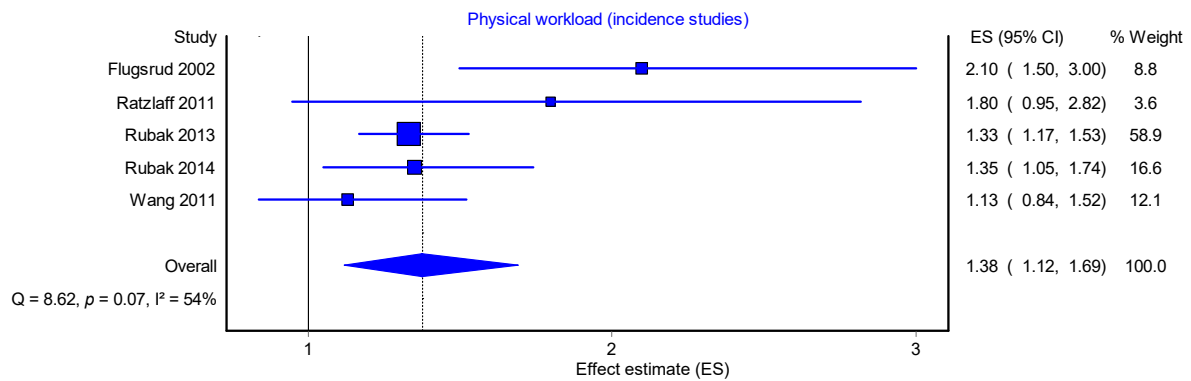
e. All case-control studies, n=3



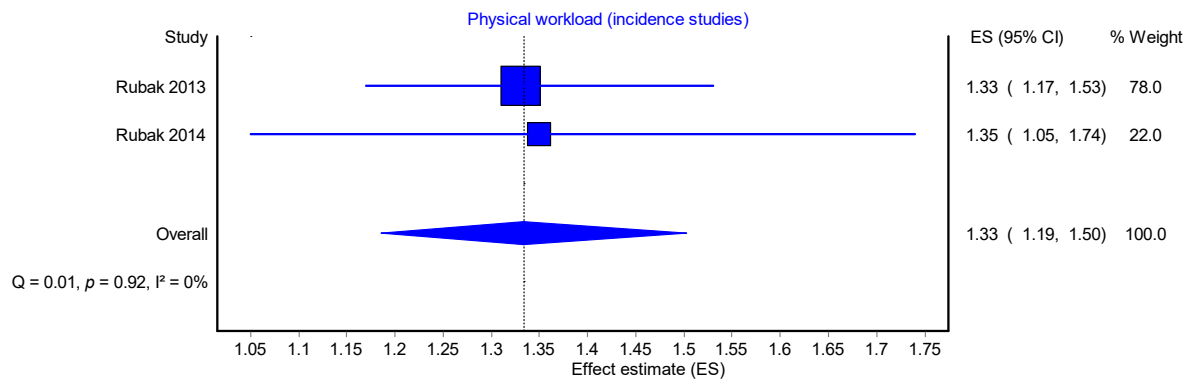
f. All cohort studies, n=6



g. Cohort studies, ExpoScore=all, DiagScore=3, n=5

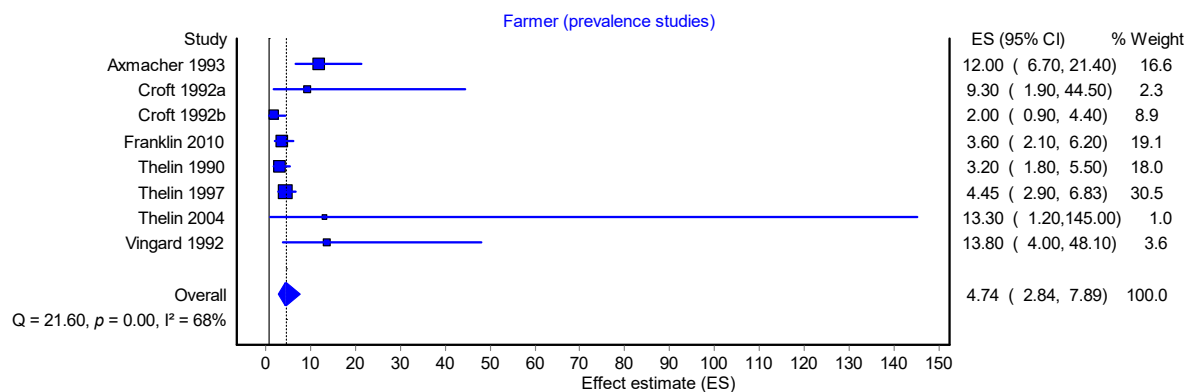


h. Cohort studies, ExpoScore \geq 3, DiagScore=3, n=2

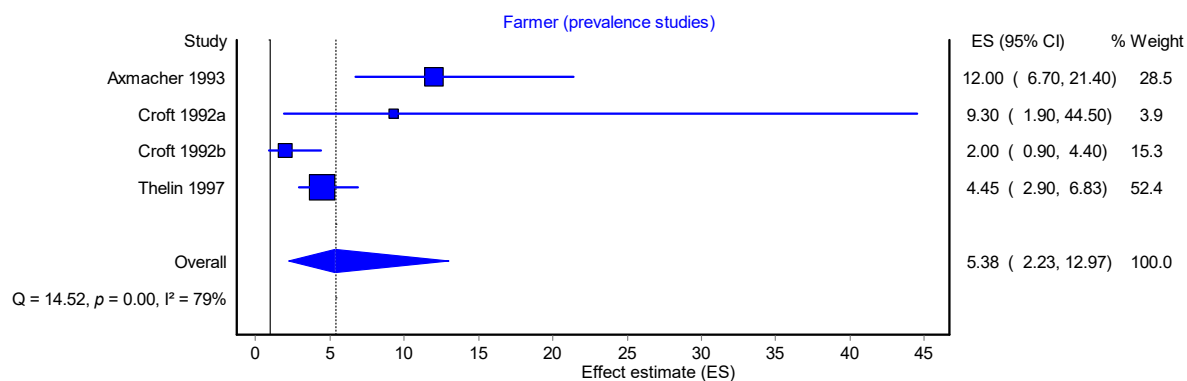


Farming and hip osteoarthritis (see Table 4)

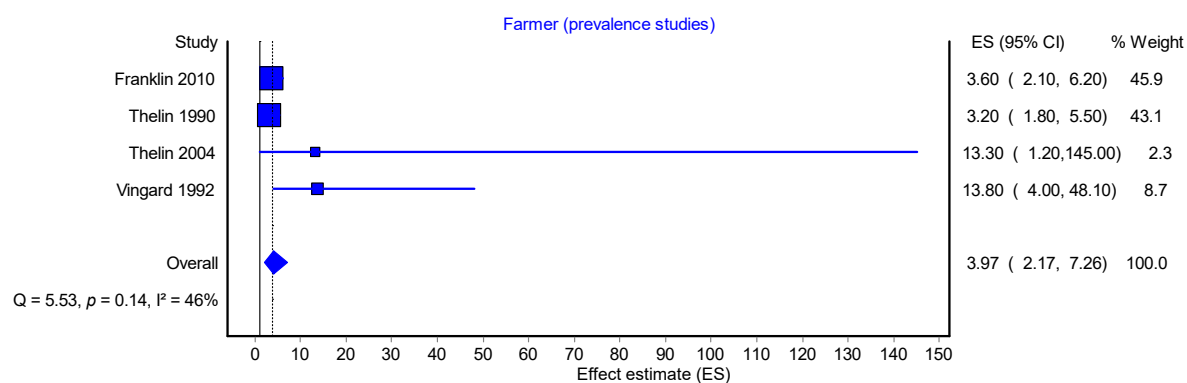
a. All prevalence studies, n=8



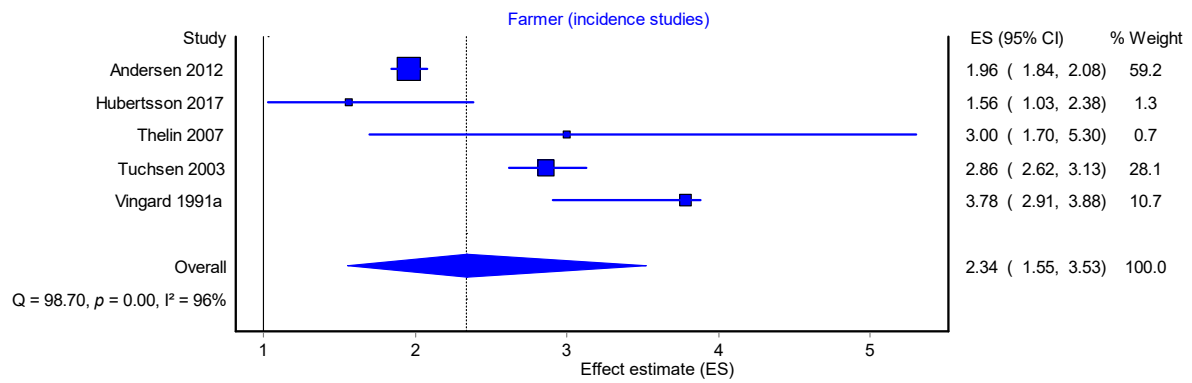
b. Prevalence studies, ExpoScore=1-2, DiagScore=1-2, n=4



c. Prevalence studies, ExpoScore=1-2, DiagScore=3, n=4



d. All cohort studies, n=5



e. Cohort studies, DiagScore=3, n=4

