

5. Supplementary Information

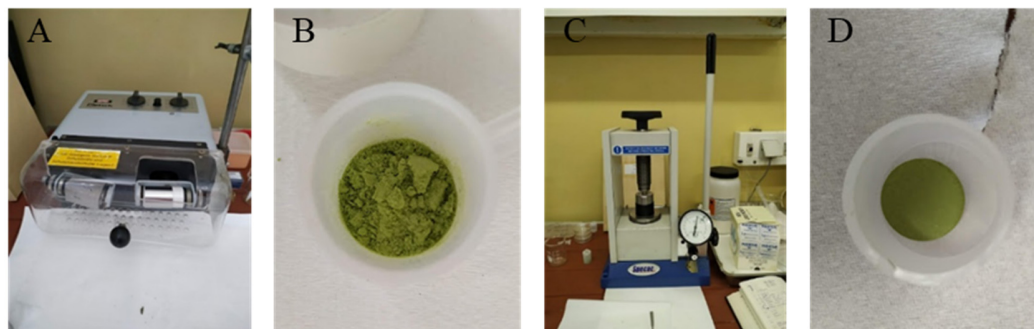


Figure S1. Procedure for preparation of pellets: (A) used ball mill RETSCH, (B) homogenised powder of lichen sample, (C) used Pelletiser SPECAC, and (D) pellet of a lichen sample.

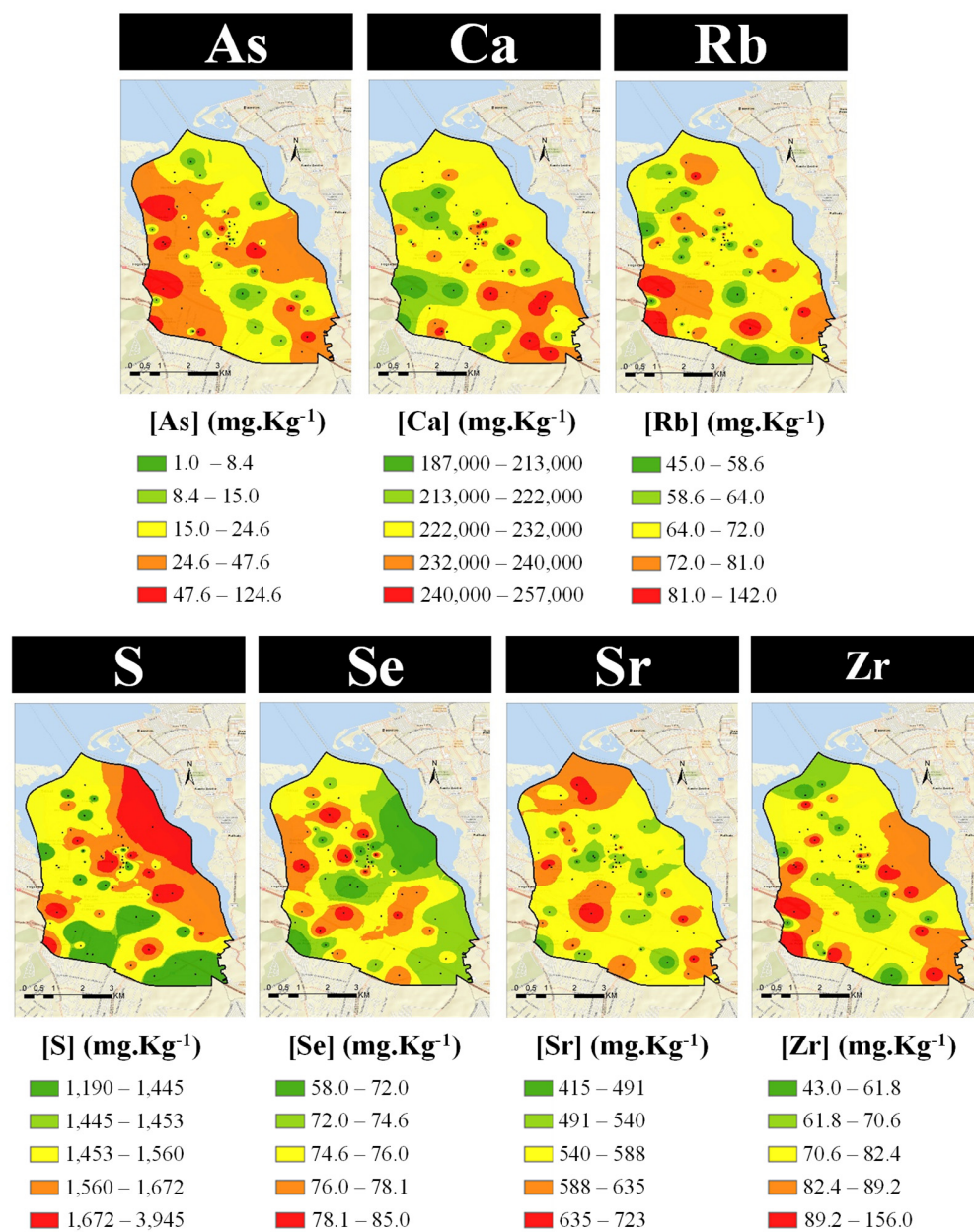


Figure S2. Spatial distribution of elements without a specific identified source.

Table S1. Reference values of soil composition (in mg.Kg⁻¹) defined by Mason and Moore [42], used for the calculation of the Enrichment factors.

Element	Mean crustal concentration (mg.Kg ⁻¹)
Al	81300
As	1.8
Br	2.5
Ca	36300
Co	25
Cr	100
Cu	55
Fe	50000
K	25900
Mg	20900
Mn	950
Pb	13
Rb	90
S	260
Se	0.05
Si	277200
Sr	375
Ti	4400
Zn	70
Zr	165