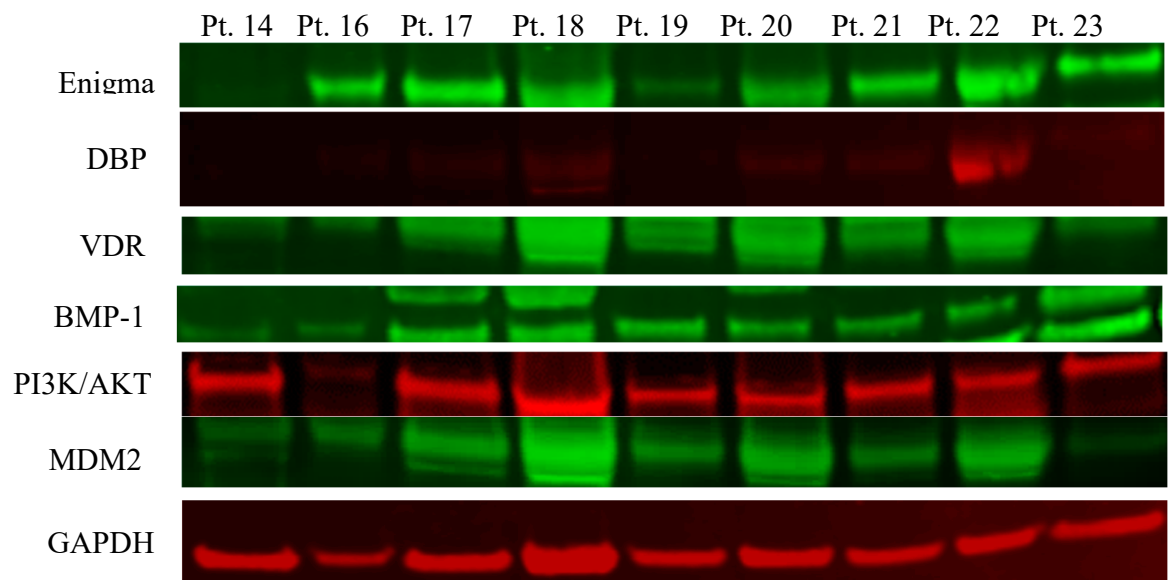
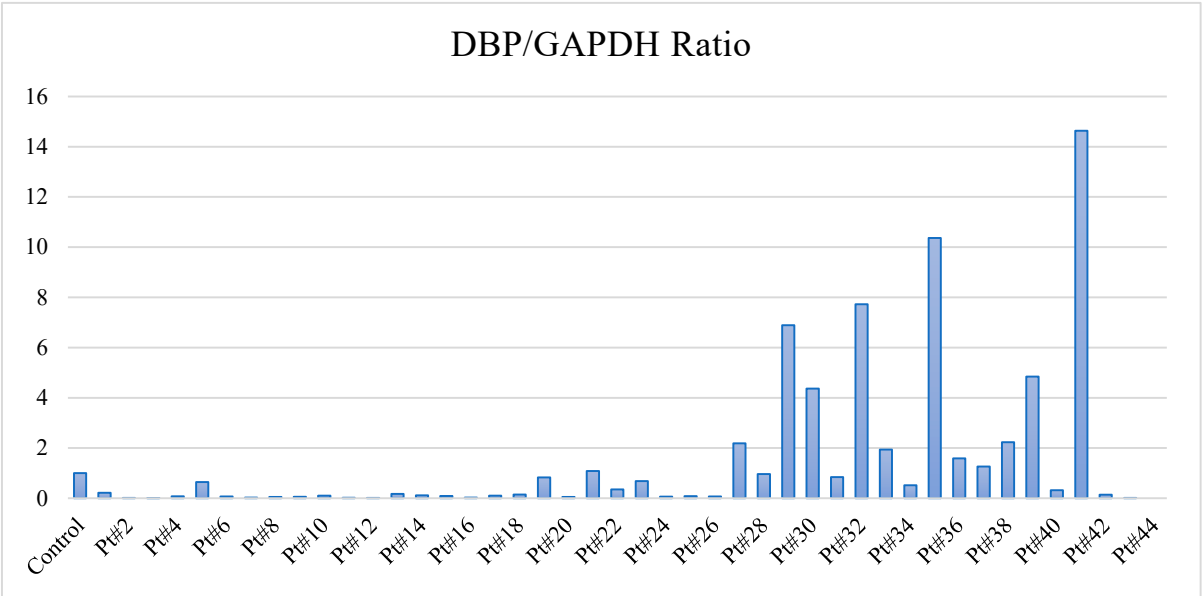


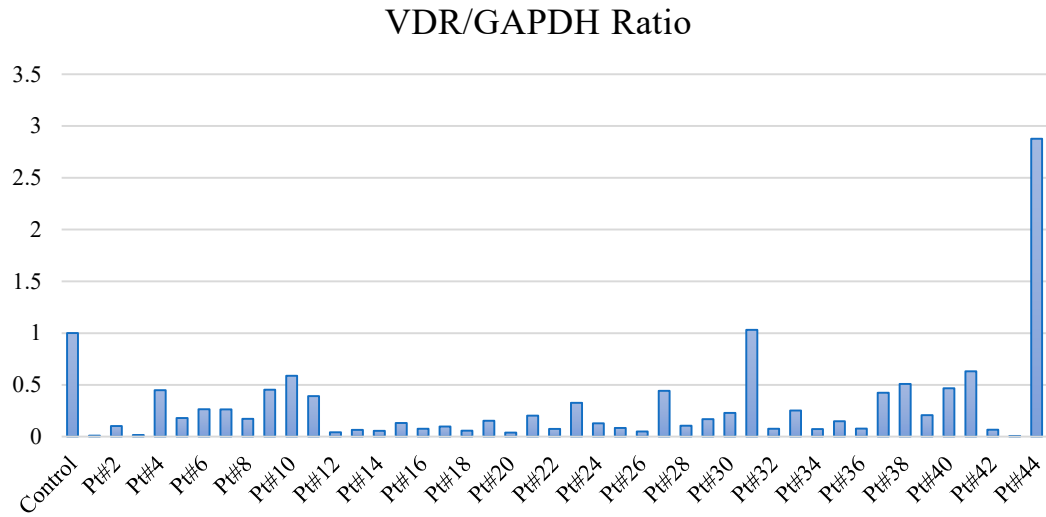
Supplemental Figures:



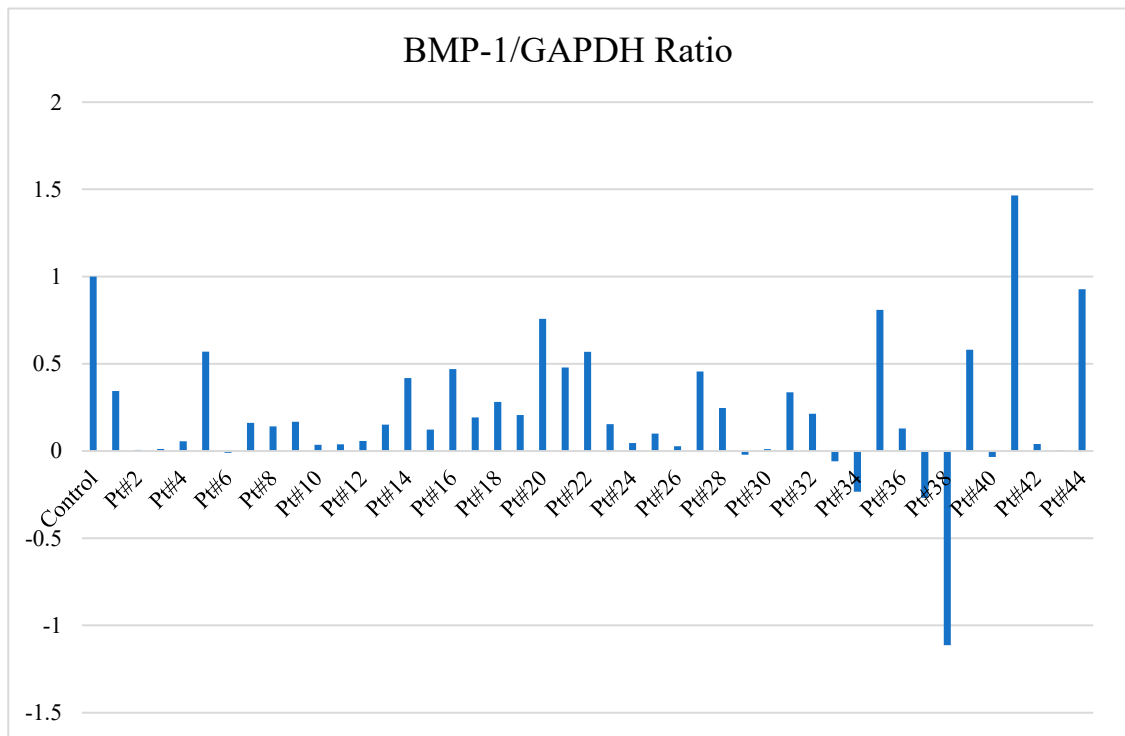
Supplemental Figure S1A. Western blotting of representative samples of 9 patients probed with Enigma (55 kDa), BMP-1 (80-100 kDa), DBP (52-58 kDa), VDR (48-55), PI3K/AKT (56 kDa), MDM2 (75-85 kDa), and GAPDH (37 kDa) antibodies (n=44 tissue samples). Pt, patient.



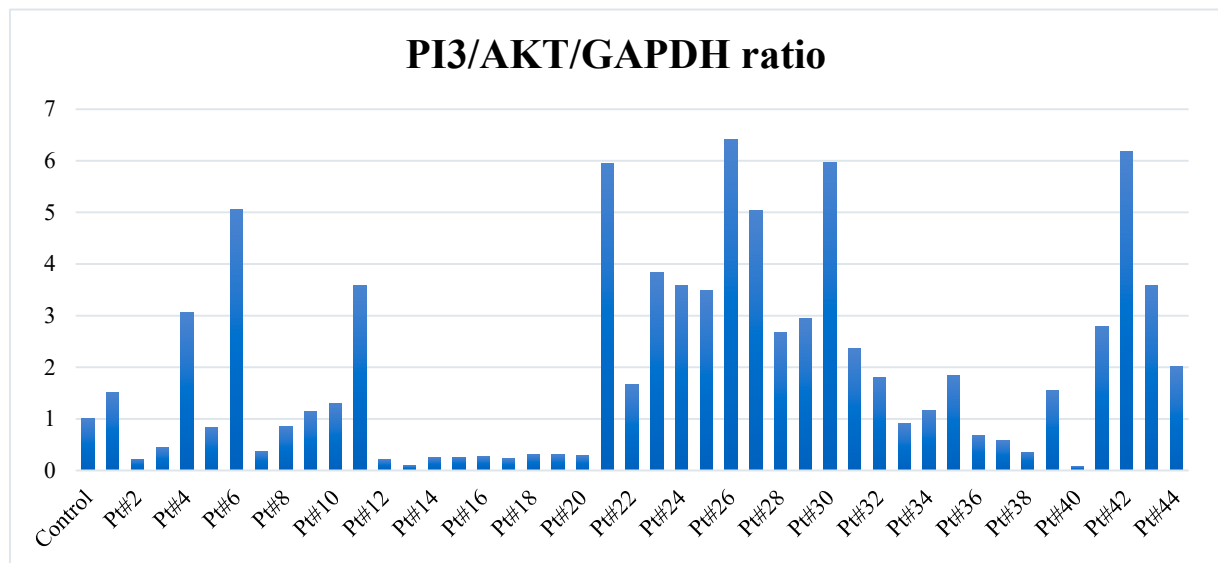
Supplemental Figure S1B. Densitometric analysis of western blot images using LICOR image software. The DBP/GAPDH ratio was calculated from the raw data in 44 patients.



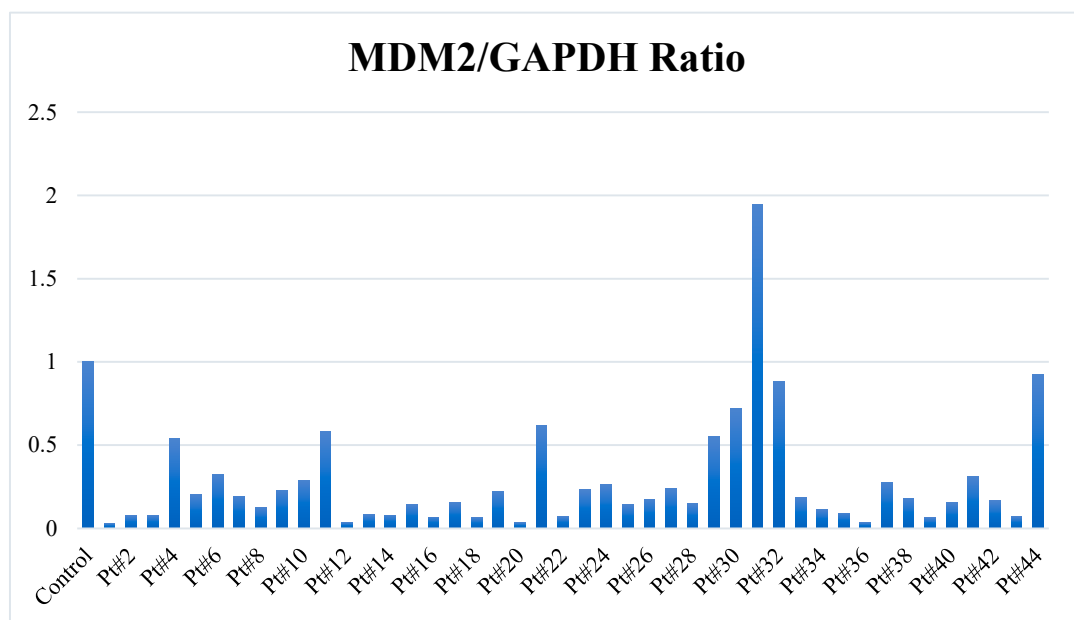
Supplemental Figure S1C. Densitometric analysis of western blot images using LICOR image software. The VDR/GAPDH ratio was calculated from the raw data in 44 patients.



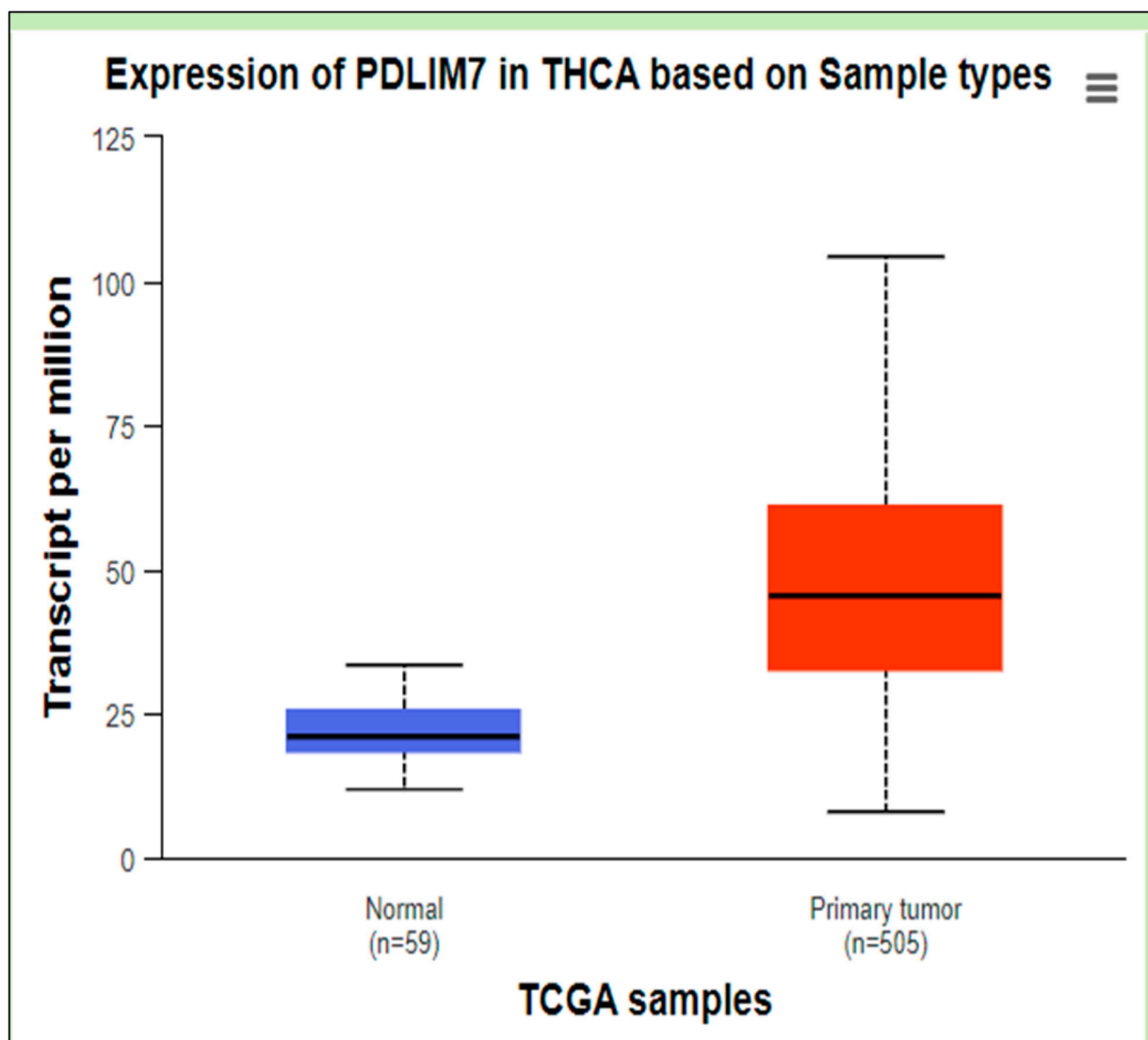
Supplemental Figure S1D. Densitometric analysis of western blot images using LICOR image software. The BMP-1/GAPDH ratio was calculated from the raw data in 44 patients.



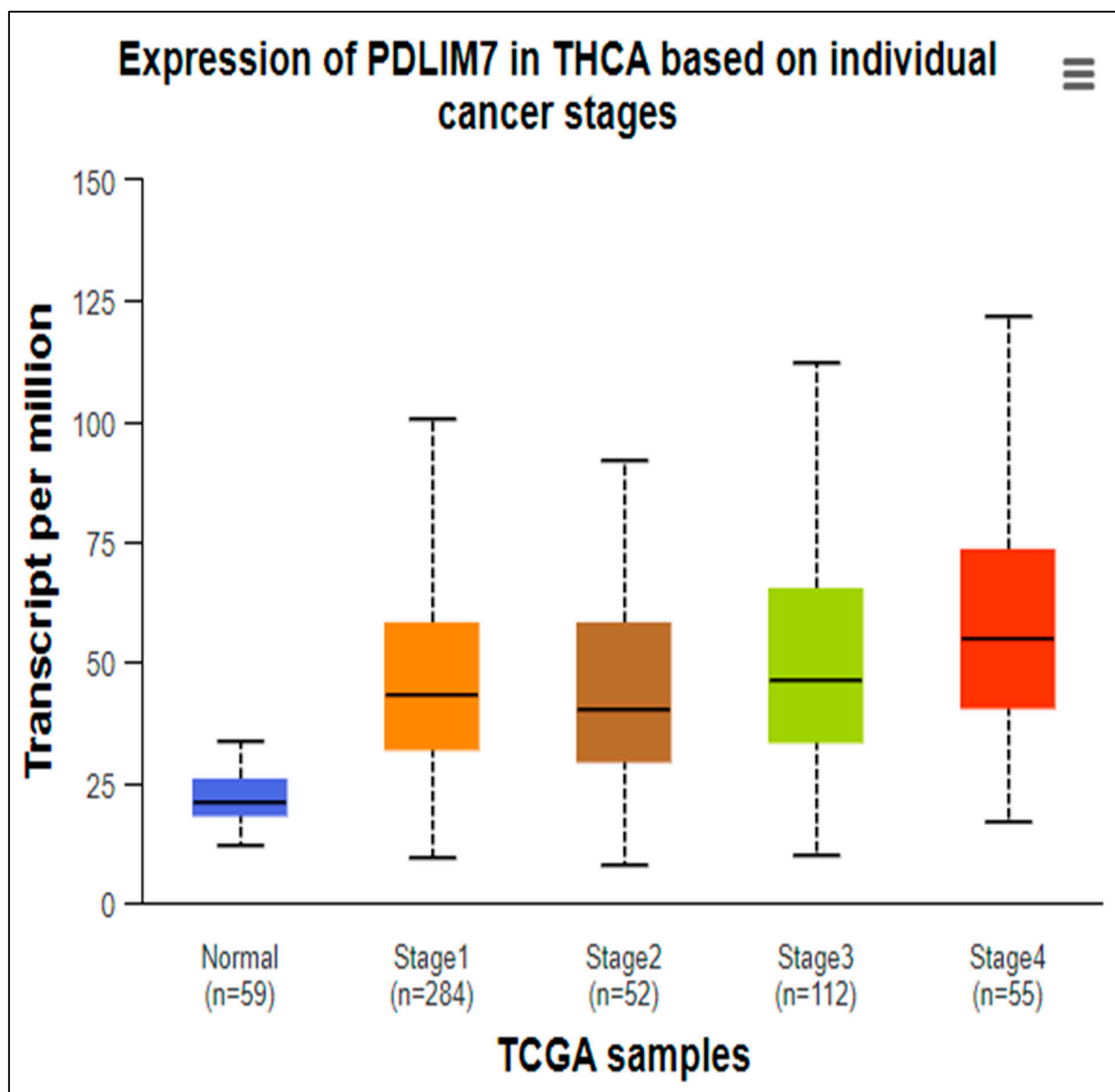
Supplemental Figure S1E. Densitometric analysis of western blot images using LICOR image software. The PI3K/AKT/GAPDH ratio was calculated from the raw data in 44 patients.



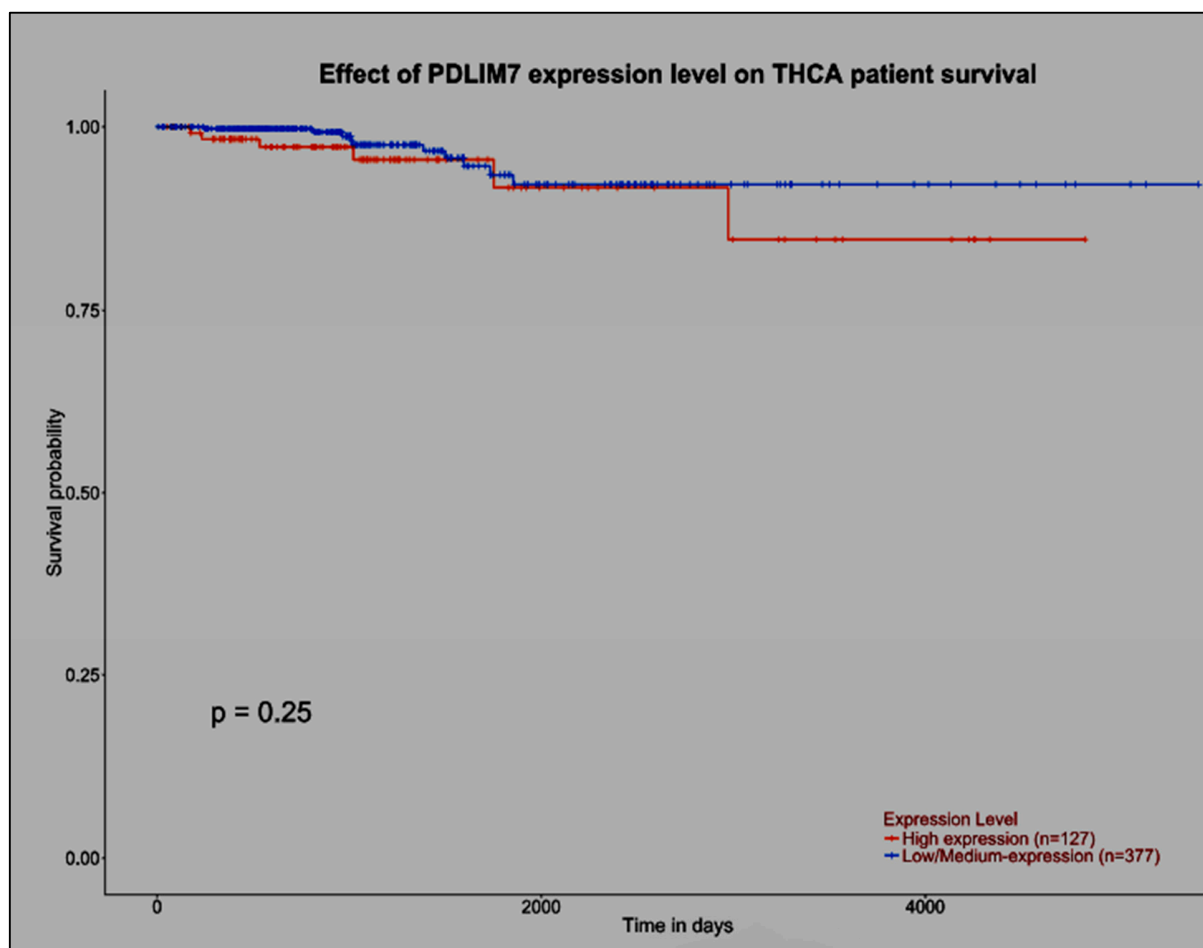
Supplemental Figure S1F. Densitometric analysis of western blot images using LICOR image software. The MDM2/GAPDH ratio was calculated from the raw data in 44 patients.



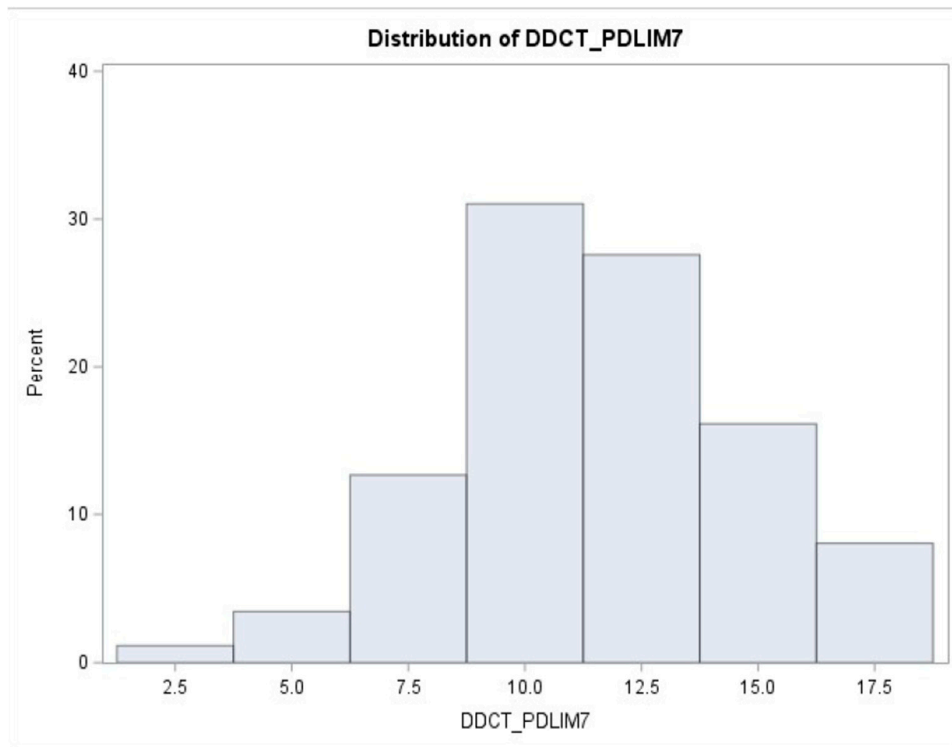
Supplemental Figure S2A. TCGA analysis of PDLIM7 gene expression in normal (n=59) versus primary tumor (n=505).



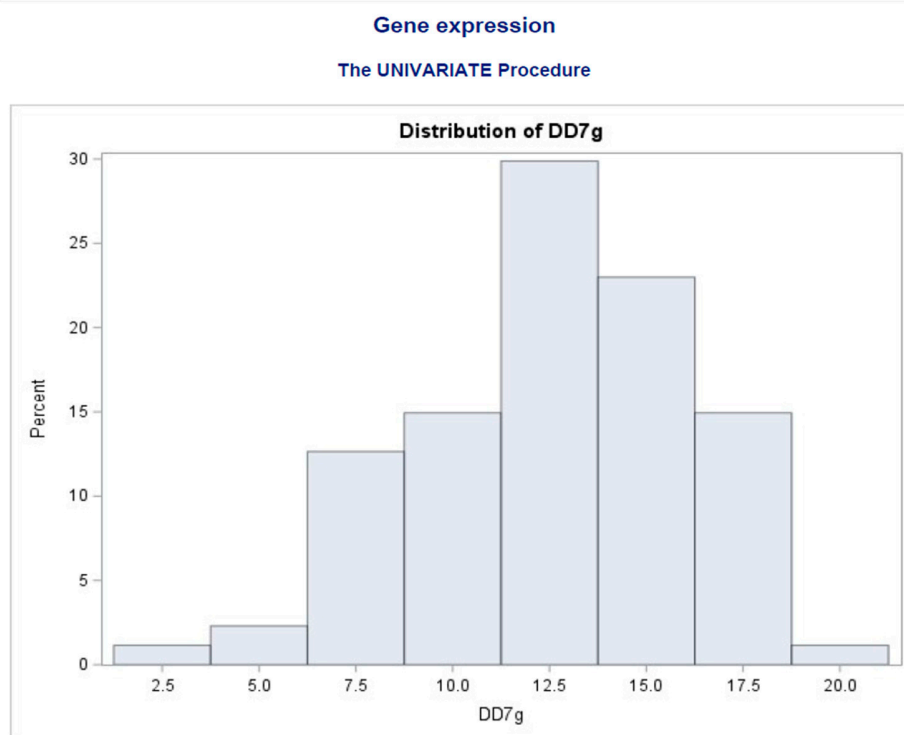
Supplemental Figure S2B. TCGA analysis of PDLIM7 gene expression in normal (n=59) versus Stage 1(n=284), Stage 2(n=52), Stage 3(n=112), and Stage 4 (n=55).



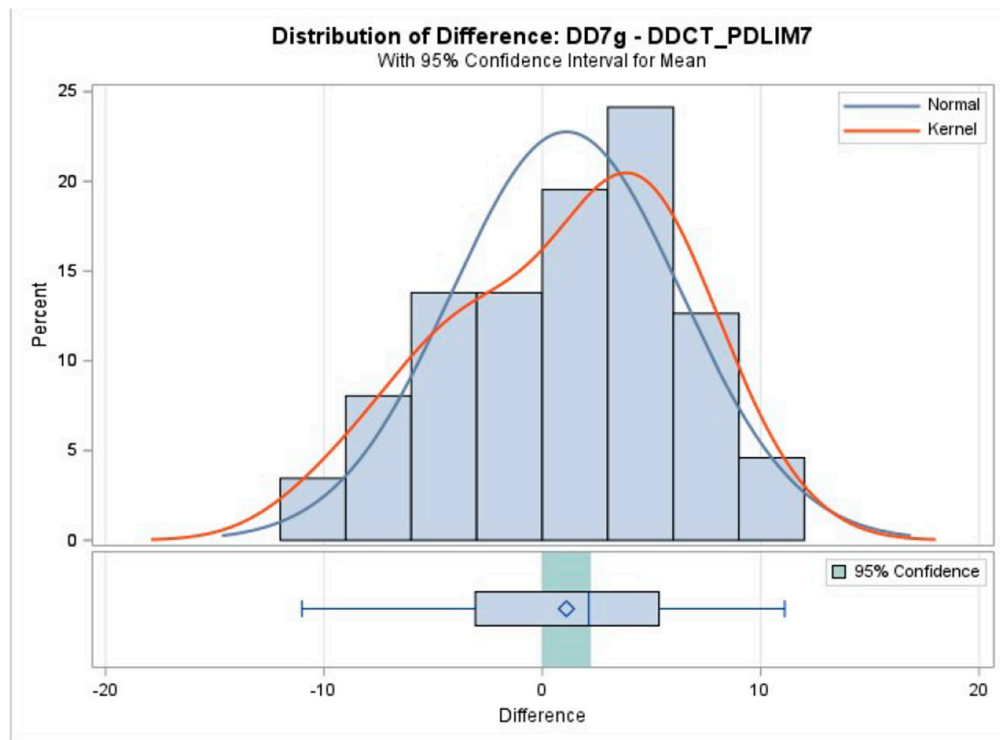
Supplemental Figure S2C. TCGA analysis of PDLIM7 gene expression on patient's survival (high expression, $n=127$), (low expression, $n=377$).



Supplemental Figure S3A. Histogram of PDLIM-7 gene expression



Supplemental Figure S3B. Histogram of let-7 gene expression.



Supplemental Figure S3C. Histogram showing the difference between both gene expressions.