

Article

Trends in Data Centre Energy Consumption under the European Code of Conduct for Data Centre Energy Efficiency

Maria Avgerinou, Paolo Bertoldi and Luca Castellazzi *

European Commission, Joint Research Centre (JRC), Directorate C-Energy, Transport and Climate, Via E. Fermi 2749, I-21027 Ispra (VA), Italy; mar.avgerinou90@gmail.com (M.A.); paolo.bertoldi@ec.europa.eu (P.B.)

* Correspondence: luca.castellazzi@ec.europa.eu; Tel.: +39-0332-78-9977

Received: 4 August 2017; Accepted: 19 September 2017; Published: 22 September 2017

Abstract: Climate change is recognised as one of the key challenges humankind is facing. The Information and Communication Technology (ICT) sector including data centres generates up to 2% of the global CO₂ emissions, a number on par to the aviation sector contribution, and data centres are estimated to have the fastest growing carbon footprint from across the whole ICT sector, mainly due to technological advances such as the cloud computing and the rapid growth of the use of Internet services. There are no recent estimations of the total energy consumption of the European data centre and of their energy efficiency. The aim of this paper is to evaluate, analyse and present the current trends in energy consumption and efficiency in data centres in the European Union using the data submitted by companies participating in the European Code of Conduct for Data Centre Energy Efficiency programme, a voluntary initiative created in 2008 in response to the increasing energy consumption in data centres and the need to reduce the related environmental, economic and energy supply security impacts. The analysis shows that the average Power Usage Effectiveness (PUE) of the facilities participating in the programme is declining year after year. This confirms that voluntary approaches could be effective in addressing climate and energy issue.

Keywords: Data Centre Energy Efficiency; PUE; voluntary agreements; energy efficiency policies

1. Introduction

Climate change is recognised as one of the key challenges humankind is facing. The recent international Paris agreement aims at limiting the temperature increase to no more than 2 °C compared to the period before the industrial revolution [1]. Among the measures to mitigate the impact of climate change, energy efficiency is highlighted as a key component [2]. In addition to mitigation of CO₂ emissions, energy efficiency will reduce the energy consumption compared to a “business as usual” approach and therefore contributes to the security of energy supplies and to the competitiveness of business [3]. Energy efficiency is a key part of the European energy policies and the 2020 and 2030 energy and climate targets include a specific part for energy efficiency [4]. In the EU, as well as in other major economies, policies and measures have been introduced to improve energy efficiency in every sector of the economy, including ICT and data centres [5].

According to Rong et al. [6], data centres are computer warehouses that store large amounts of data that meet the daily transaction processing needs of different businesses. They contain servers for the collection of data and network infrastructure for the utilisation and storage of the data. Data centres usually run 24/7 all year round [7], and they are very energy intensive with typical power densities of 538–2153 W/m² that sometimes can reach up to 10 KW/m² [8]. High energy consumption can be attributed primarily to the IT demands and cooling equipment, as well as lighting, power distribution and other requirements. The cooling system alone may account for up to 40% in average of the energy

demands of a data centre [9,10], with the most efficient systems using 24% of the total energy and the least efficient 61% [10]. The power is distributed to chillers, cooling towers and water pumps [9]. Water chillers are the most energy-consuming since they supply chilled water to the cooling coil in order to keep the indoor temperature low enough to remove the heat emitted by the servers and other equipment [9].

The ICT (Information and Communication Technology) sector including data centres generates up to 2% of the global CO₂ emissions, a number on par to the aviation sector contribution [11,12], and data centres are estimated to have the fastest growing carbon footprint from across the whole ICT sector [12]. The energy consumption in the ICT sector has increased exponentially over the last years, mainly due to technological advances such as the cloud computing and the rapid growth of the use of Internet services [2]. In general, the information technology (IT) sector nowadays consumes approximately 7% of the global electricity, and it is forecasted that the share will rise up to 13% by 2030 [13]. Real-time video streaming, online gaming as well as mobile devices already account for 60% of all data traffic, and it is predicted that this will rise to 80% by 2020 [14]. The data centre (DC) sector in particular is estimated to account for 1.4% of the global electricity consumption (1.1–1.5% for 2011 specifically [6,15]), and the compound annual growth rate (CAGR) of this consumption in the period between 2007 and 2012 has been estimated as 4.4%, much higher than the projected 2.1% increase in global demand from 2012 to 2040 [16].

Table 1 shows the total energy consumption in data centres over different years from a European, American and global perspective. It must be noted that Van Heddeghem [17] calculated the global consumption taking into consideration Koomey's methodological approach (12% annual growth) [15] albeit including orphaned servers (servers that use electricity but not delivering services). However, thus far, there is little evidence to support the data centre energy consumption estimations, especially those that include the infrastructure energy as well. This is mainly due to the lack of energy use monitoring, changing technologies and growing densities and, finally, rare disclosure of the companies' energy data [12].

Table 1. Energy consumption estimations and projections in TWh from a European, American and Global perspective.

Consumption (TWh)	Reporting Year	Reference
EU consumption		
18.3	2000	Koomey [15]
41.3	2005	Koomey [15] and Whitehead [12]
56	2007	Bertoldi [18]
72.5	2010	Whitehead [12]
104	2020	Bertoldi [18]
US consumption		
91	2013	Ni [10]
140	2020	Ni [10]
Global consumption		
216	2007	Van Heddeghem [17]
269	2012	Van Heddeghem [17]

Data centres have been designed to allow operational and capacity changes and expansions and in conjunction with the fact that many of them run redundant power and cooling systems to provide better reliability, the energy consumption inefficiency is quite high [14,19]. However, there is no appropriate legislative framework and policies to limit the negative impact of data centres' energy consumption to CO₂ emissions.

There are European policy actions for buildings such as the 2010 European Energy Performance of Building Directive (EPBD) [20] which imposes on the EU Member States to adopt minimum efficiency requirements for buildings based on cost-optimality in their building codes. In addition to that Directive, there is an agreement between the EU and the US on the shared use of the Energy Star

labelling programme, whose equipment is available in Europe and promoted by public authorities and their procurement practices. Furthermore, the Eco-design Directive introduces minimum efficiency standards for energy related equipment such as refrigerators, lamps, washing machines, television, etc. [14].

Thus, even though the Directive covers individual equipment that is used in data centres, the overall efficiency of the facility is not guaranteed [14]. Generally, there are no European policies that introduce specific mandatory efficiency requirements for data centres.

There are no recent estimations of the total energy consumption of the European data centre or of their energy efficiency. There are not many studies that investigate the energy performance and efficiency of data centres based on real data, and the existing ones have used much smaller datasets, estimations or are solely based on Koomey's research in 2008 [21]. Ni and Bai presented a review of different reports investigating the air conditioning energy performance of 100 data centres. Indicatively, one of the reports included in the review assessed 44 data centres around the world and presented an average Power Usage Effectiveness (PUE) of 2.29, whereas a second one assessed 23 facilities in Singapore of average PUE 2.07 [10].

The aim of this paper is to evaluate, analyse and present the current trends in energy efficiency in data centres in the European Union using the data submitted by companies participating in the European Code of Conduct for Data Centre Energy Efficiency initiative.

The paper is organised as follow. Firstly, the Code of Conduct for Data Center programme is presented in Section 2. Then, in Section 3, the methodology is described. Section 4 reports the main findings and results. Finally, Section 5 presents the conclusion and the future work.

2. European Code of Conduct for Data Centre Energy Efficiency

To address complex energy efficiency issues, policy makers can establish either mandatory regulations or voluntary agreements. However, there are sectors that are especially difficult to regulate with many decision makers involved, thus the voluntary approach is generally preferred, especially between public authorities and private enterprises [22].

The Codes of Conduct (CoC) are European voluntary programmes for the ICT sector that have been introduced since 2000. Currently, there are four CoC for ICT products in place: External Power Supplies, Digital TV Systems, Broadband Equipment and UPS. All the aforementioned Codes set specific efficiency requirements for specific products on a voluntary basis, but once a company participates, they have to meet the performance levels and report the energy consumption of their products annually. The fifth and most recent CoC for Data Centres employs the same strategy [14]; however, it is not possible to set a minimum efficiency requirement for data centres, given the diversity of data centres and the different level of responsibilities; for example, some companies are only responsible for the infrastructure, while others are responsible for the IT equipment selection and operation [14]. Therefore, it was decided that the key criteria for the Data Centre CoC was to ask participating companies to monitor their energy consumption and to adopt a set of established best practices [19].

The EU Data Centre Code of Conduct is a voluntary initiative created in 2008 to limit the increase in energy consumption in data centres and thus to reduce the environmental, economic and energy security impacts [23]. It is managed by the Joint Research Centre (JRC), the European Commission's in-house science service. The aim is to inform data centre operators and owners to reduce energy consumption in a cost-effective manner and without hampering the critical function of data centres. In addition, it provides the platform to bring together European stakeholders to discuss and agree voluntary actions which will improve energy efficiency following European conditions such as the climate and energy markets regulations [19].

The energy saving focus of the CoC covers the IT load, related to the IT equipment consumption in the facility, and the Facilities load, related to the mechanical and electrical systems that support the IT electrical load [19]. Every year, data centres that have adopted innovative technologies to improve their

energy efficiency and have demonstrated outstanding improvements are given the Code of Conduct Data Centre Award. The criteria for the winners are the reduced need for mechanical cooling of the data centre for most of the time and raised indoor temperature. These are among the most important measures to improve efficiency and reduce energy consumption.

The core of the programme is a registration form, signed by the Participant, through which they commit to conduct an initial energy audit to identify the major energy saving opportunities, prepare and submit an action plan and implement this plan according to the agreed timetable. Energy consumption must be monitored regularly to see overtime progress in the energy efficiency indicator related to the data centre. All Participants have the obligation to continuously monitor energy consumption and adopt energy management in order to look for continuous improvement in energy efficiency [24]. One of the key objectives of the CoC is that each participant benchmark their efficiency overtime, using the CoC metric in order to produce evidence of continuous improvement in efficiency.

Each applicant completes a Reporting Form for each data centre; this form contains information about the data centre technical characteristics such as the capacity, size and construction year, energy and IT consumption data and the Best Practices that are already in place or that will be implemented in the near future. At least one-month measurements of energy consumption and IT data should be submitted for the extrapolation of the annual consumption of the facility [24].

As stated in the CoC guidelines [19], the facility energy shall be measured at the utility for a stand-alone data centre, or the data centre sub meter. IT energy consumption is measured at the UPS outputs, excluding Computer Room Air Conditioning (CRAC) units, etc. In addition to the energy consumption, optional reporting criteria are also included in the reporting form such as meters on individual parts of the data centre such as the chiller systems and the CRAC units. In addition, meters allowing the efficiency devices to be measured such as power to and from the UPS system [19].

3. Methodology

3.1. Data Collection

The data used for the analysis were taken from the registration forms submitted by the companies applying for the participant status. The registration form contains the following information:

- Building information: type of data centre, type of building, floor area, year of construction and location.
- Operation: rated IT load, temperature and relative humidity (RH) set points and mechanical system type.
- IT Measurement: total IT plug energy from UPS/PDU meter in KWh, along with the start and end dates of the meter readings.
- Electricity data: electricity consumption in KWh, along with the start and end dates of the meter readings.
- Best practices that are implemented in the facility, and reasons of the non-implementation of the mandatory practices, if any.

As for the economiser and the mechanical system type, it is described in the best practices tab in the spread sheet.

As for the type of data centre, the user may choose the appropriate option from a drop down list that appears in the spread sheet as follows [25]:

1. Traditional enterprise: processes data requirements for data centre owner
2. On demand enterprise: processes and expands data processing capacity, when needed, for numerous customers (this would include batch processing and manufacturing type data processing facilities)
3. Telecom: telecom switching centre
4. High performance computing: scientific and high density data processing

5. Hosting: sells data processing services to numerous customers
6. Internet: provides high capacity processing for large numbers of web clients
7. Hybrid: combination of two or more of the above

In addition, the type of building can be either stand-alone or enclosed into a larger building. At present the Code of Conduct does not cover DC water consumption. This aspect will be considered in the future, together with an analysis of DC geographical distribution and/or climatic zones.

After the construction of the database containing all the above information for each data centre, simple spread sheet analysis was used to identify the average values and the correlation between the variables.

Up to December 2016, 325 data centres have applied for the Participant status, the great majority of them are located in Europe. In the present paper, the analysis was applied to a reduced sample of 289 data centres that have been approved and have submitted complete energy data so far. In total, there are over 120 different organisations participating with one or multiple facilities each from all over Europe and some from the US. All data are confidential and are only used for research purposes.

The map below (Figure 1) depicts the distribution of the participating European data centres. The facilities located in the US and Mauritius have been omitted. In the map it is observed that the places with the greater data centre densities are the London, Amsterdam, Frankfurt, Paris and Milan areas and their surroundings, where in fact, the largest data centre markets in Europe are based.

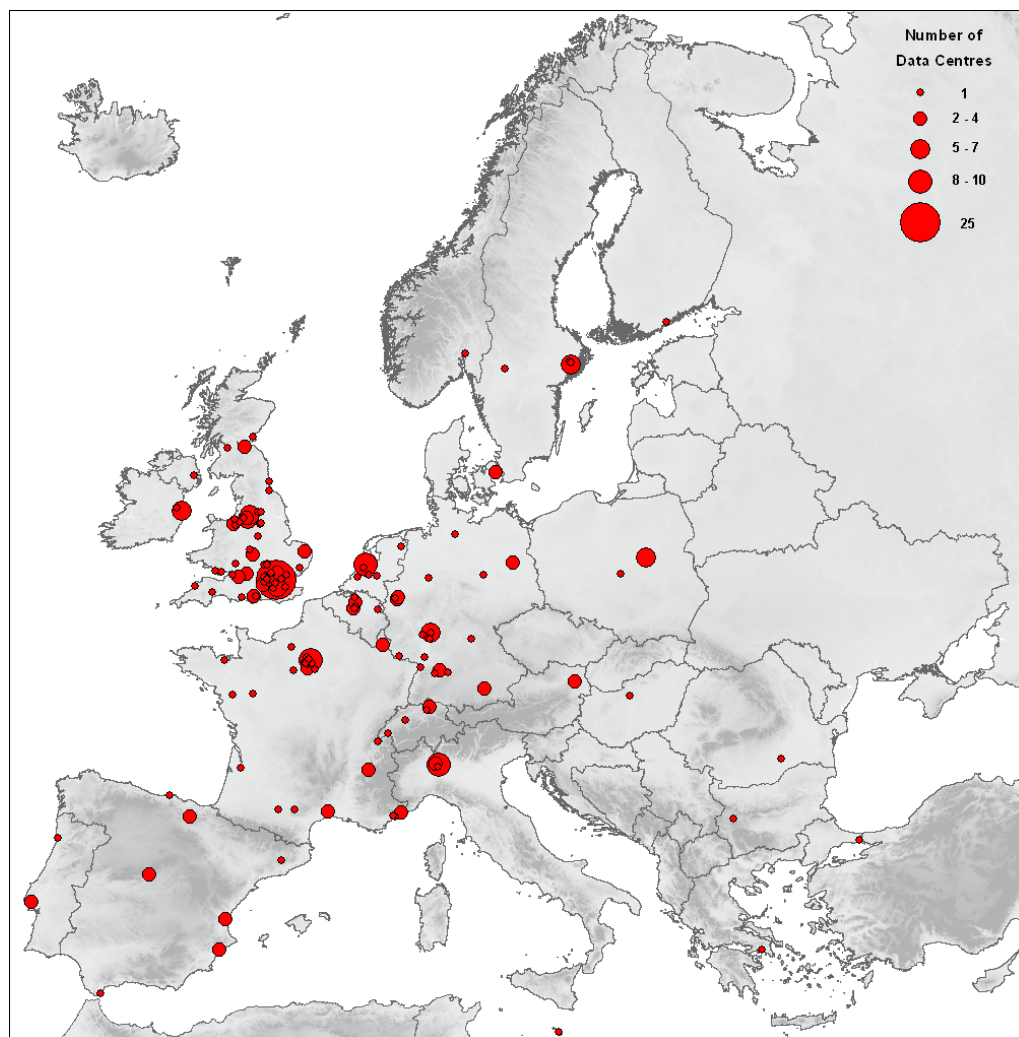


Figure 1. Geographical distribution of the data centres participating in the Code of Conduct (CoC).

3.2. Metrics

Several industry and research organisations proposed different metrics to assess energy performance of data centres and their operating costs (e.g., the “life time of servers” [26]). The European CoC measures the Data Centre efficiency by using the Power Usage Effectiveness metric (PUE) introduced by The Green Grid in 2007 [27], and adopted by the industry as the standard choice. Even though the development of other metrics that better describe the overall environmental performance of data centres are under discussion [28], the PUE is intended to help operators understand a data centre’s efficiency and reduce energy consumption. It is defined as the ratio of total data centre input power to the power used by the IT equipment.

$$\text{PUE} = \frac{\text{Total Facility Power}}{\text{IT Equipment Power}}$$

The higher the PUE value is the lower the efficiency of the facility as more “overhead” energy is consumed for powering the electrical load. The ideal PUE value is 1 which indicates the maximum attainable efficiency with no overhead energy. This is not attainable at present due to the consumption of electricity by UPS, fans, pumps, transformers, lighting and other auxiliary equipment in addition to the consuming IT load [29]. The PUE is defined in the recent international standard ISO/IEC 30134-2:2016 [30]. Characteristically, Koomey estimated a range of global PUE values from 1.25 to 3.75 with an average on 1.92, based on the EPA’s (Environmental Protection Agency) Energy Star programme survey on 61 data centres in 2010 [15]. In addition to that, Uptime Institute published a survey in 2013 estimating the average PUE based on self-reporting participants to be 1.65, a much improved performance comparing to 1.89 in 2011 and 2.1 in 2007 [31].

The total data centre energy is measured from the point where it is purchased; this includes the electricity, chilled water, gas, fuel oil and other purchases made from a utility. Electricity generated on-site from renewable energy sources is also included in the total. As for the IT load, it should be measured in the output of the Power Distribution Unit (PDU), or at a minimum at the output of the Uninterruptible Power Supply (UPS) [32]. PUE is used by the industry as a standard practice to compare DC as it gives a rough idea of energy efficiency, although, as stated Salomon et al. [33], it should be used basically to determine the effects of different design and operational decisions within a specific facility and to assess trends in an individual DC over time.

4. Results and Analysis

4.1. Findings

As shown in Table 2, with the average statistical results of our study, the average PUE of the all approved sites is 1.80. All of them have submitted their electricity consumption and IT data, reported either on an annual or monthly basis (all the DC analysed have as input only electricity). In many cases, the energy entries do not cover the required 12-month reporting period, so the annual consumption was extrapolated based on the available data in order to calculate the PUE. Comparing to the previous analysis presented by Bertoldi in 2014 [14], the total reported annual electricity consumption has risen by 0.5 TWh reflecting the larger number of data centres participating in the programme. The average floor area of the facilities as well as the average rated IT load has not changed significantly, indicating a general homogeneity of the sites throughout the reporting years. Interestingly, the average annual electricity consumption has decreased by more than 700 MWh, suggesting the adoption of better practices and more energy efficient systems.

Table 2. Average data of reported facilities.

Total Dataset	289 Data Centres Which Have Reported the Data
Total annual electricity consumption	3,735,735 MWh
Average DC floor area	2616 m ²
Average rated IT load	1956 kW
Average annual electricity consumption	13,684 MWh
Average annual IT consumption	7871 MWh
Average PUE	1.80
Average high temp set point	25 °C
Average low temp set point	19.5 °C
Average high RH set point	59% RH
Average low RH set point	35% RH

As for the temperature and relative humidity (RH) set points, they have not changed greatly comparing to the 2014 analysis; the temperature set point range has become slightly wider, whereas the relative humidity window is now narrower. However, it was impossible to correlate those changes with the average PUE. In a future research, it would be interesting to monitor if the data centre operators comply with the ASHRAE thermal guidelines for higher operating temperatures within the facility.

Figure 2 depicts the distribution of the PUE values, excluding the outliers; these are PUE values less than 1.0 and over 3.0. A value less than 1.0 is impossible and indicates higher IT consumption than the overall energy consumption of the facility, therefore incorrect data. On the other hand, values over 3.00, even though considered outliers to maintain cohesion in the dataset, may indicate newly-constructed facilities or old data centres with inadequately implemented or not yet in place energy efficient technologies and management. Therefore, the PUE values of 268 facilities were taken into consideration. There were 12 outliers in total: three incorrect entries with PUE < 1, and nine entries with PUE > 3. The remaining nine entries were reporting incorrectly, either with missing data or in a wrong way, for example energy and IT data from different reporting periods.

Overall, most of the facilities have reported an average PUE of 1.6–1.8, followed by the 1.8–2.0 range. In addition, there are four sites that reported excellent efficiencies between 1.1 and 1.2. All four of them are located in the UK and Northern Europe, and were constructed between 1986 and 2012. There does not seem to be a pattern, since all facilities have different technical and operational characteristic such as data centre type, size, capacity, and economizer systems.

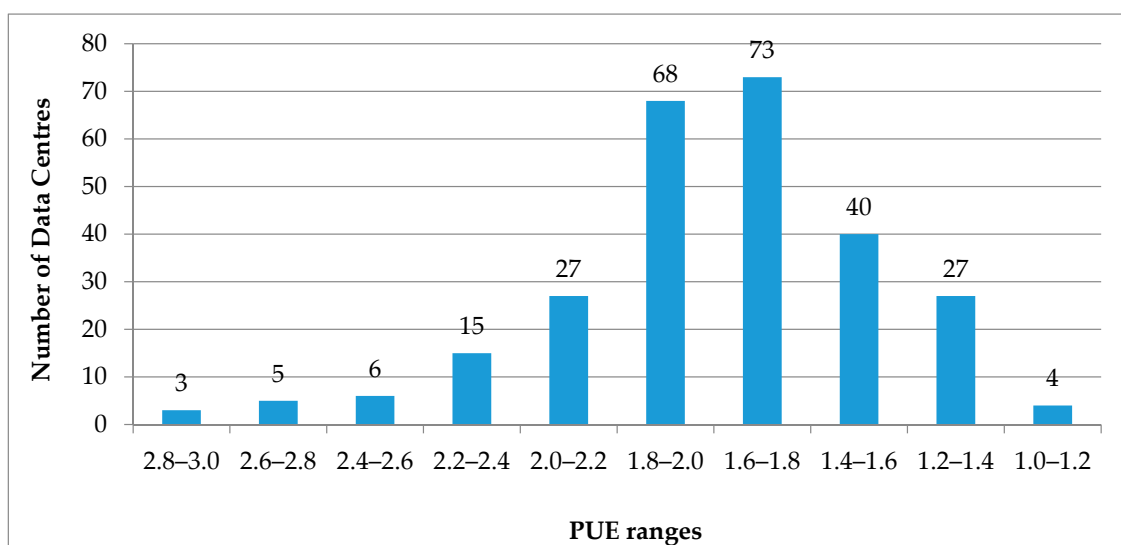
**Figure 2.** Number of Data Centres per Power Usage Effectiveness (PUE) range.

Figure 3 illustrates the fluctuations of the average PUE annual estimations throughout the reporting years, from 2009 when the first data centres were approved and submitted their energy data until the time of writing, end of 2016. The chart also shows the range of values that were calculated for each year.

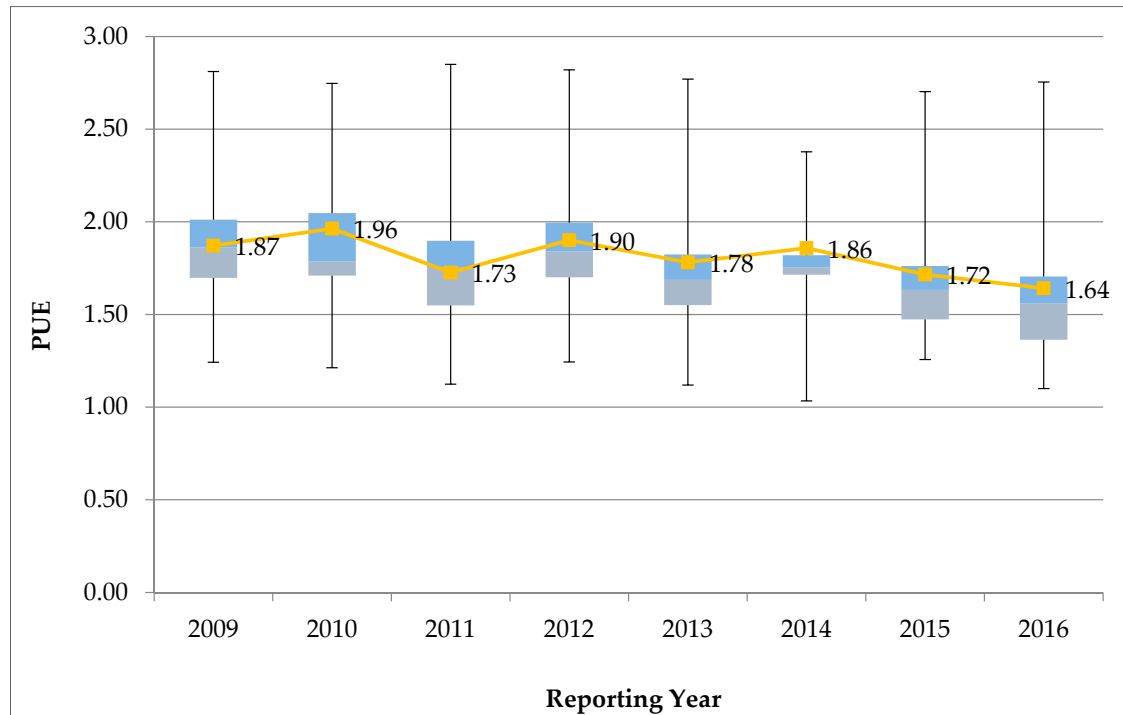


Figure 3. Average PUE per reporting year.

There is a clear declining trend ranging from the 1.96 which is the higher average PUE in 2010 to 1.64 in 2016. However, not all facilities have submitted reliable energy data, so the average PUE was estimated taking into account a slightly reduced sample of data centres. To be precise, out of the approved data centres, there were very few that submitted contradicting energy data, and these were not taken into account for the PUE calculation. It is noteworthy that all the average PUE values throughout the years are less than 2.00. All data are self-reported by the site operators, and, in some cases, there are either missing figures or figures that indicate a PUE less than 1, which is impossible by definition according to [28,30,32]. The declining PUE trend can be attributed to more efficient and advanced cooling technologies and will be investigated in comparison to the types of economisers used and other parameters such as the location of the data centres. Figures 4–6 below demonstrate the correlation between average PUE and the data centre size, age of the facility and IT capacity, respectively.

More than half of the data centres participating in the CoC contain server room between 1000 and 5000 m², each and can be classified as medium sized. However, the statistical analysis shows (see Figure 4) that the medium sized sites perform slightly worse than the smaller or bigger facilities, reaching a PUE value of 1.84, comparing 1.77 of the other size categories.

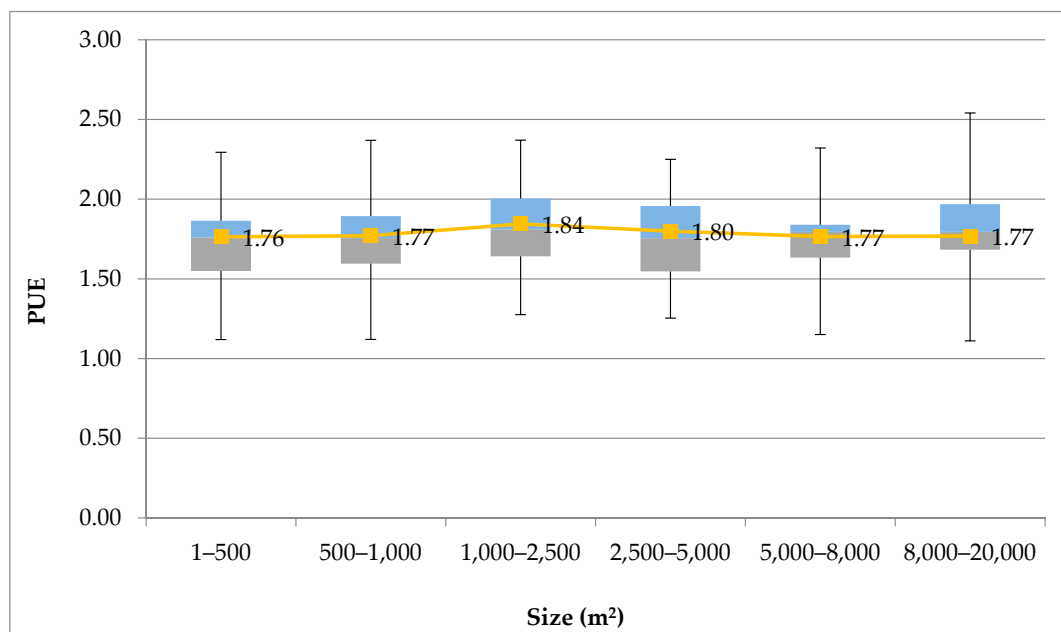


Figure 4. Average PUE for different size classifications.

In addition, as indicated in Figure 5, the facilities that were built between 2005 and 2010 appear to be more efficient, comparing to older buildings or even those build within the last five-year period that show an important decline in efficiency. It is interesting to note that most of the participating facilities fall under this age category. The low PUE values of the older data centres are not statistically reliable due to the very small number of facilities that were constructed during that period. Since the 1980s, the PUE has improved due to the energy efficiency measures.

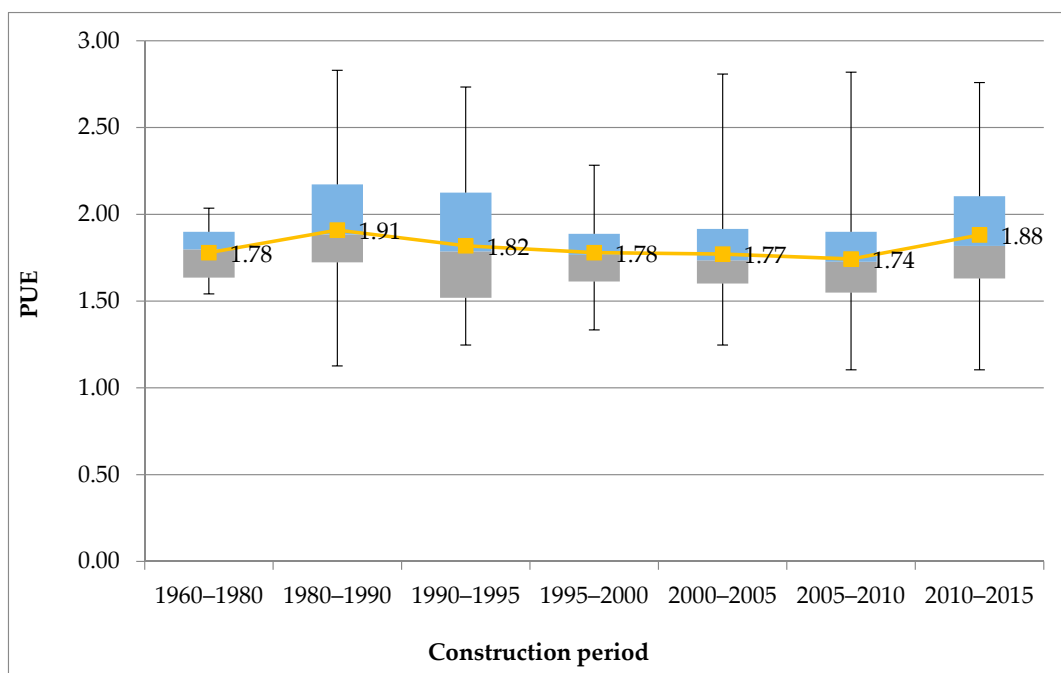


Figure 5. Average PUE per different construction periods.

Finally, IT rated load is the peak power that can be provided to the IT equipment, measured in kW. The analysis shows that sites with 5–10 MW IT rated load appear to perform better than the rest, followed by the 0.1–0.3 MW sites. However, the intense fluctuations suggest that the IT capacity has no actual impact on the efficiency of the facility.

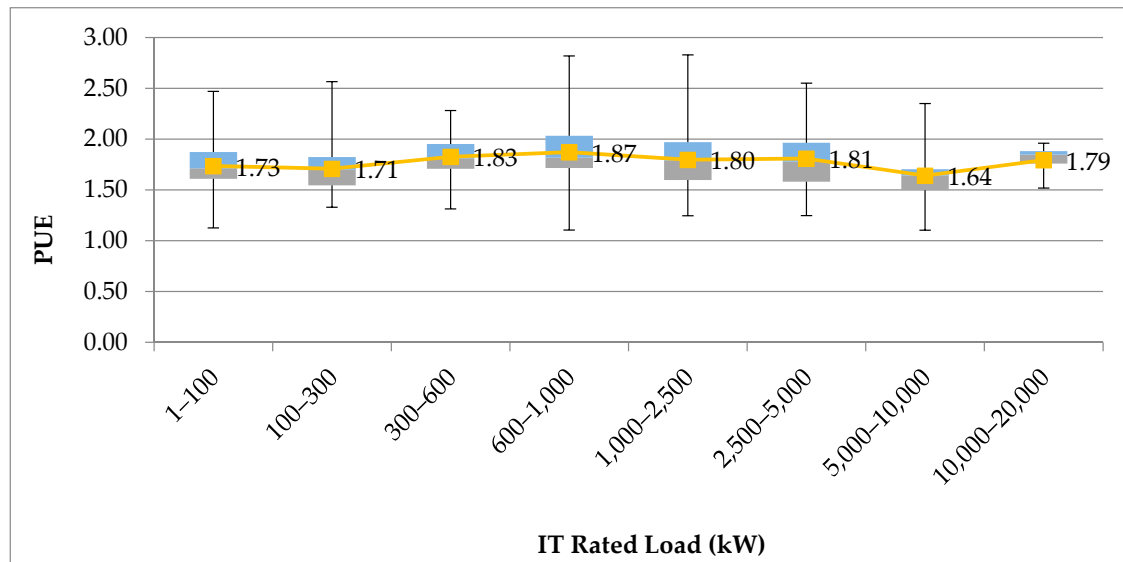


Figure 6. Average PUE values for different IT rated load classifications (kW).

4.2. Sector Distribution Analysis

The Code of Conduct distinguishes between seven different types of data centres [25], as already described in Section 3.1: traditional enterprise, on demand enterprise, telecom switching centre, high performance computing, hosting, internet providers and hybrid DC (combination of two or more types).

Figure 7 illustrates the distribution of the data centres by the types of sectors. It is observed that more than one third of the reporting facilities belong to the Traditional Enterprise type. In this type of business model, the ownership of the facility, IT equipment and software systems are common [7]. The hosting sector comes second followed by the hybrid. In a hosting type of facility, the ownership and the IT equipment is common but the software systems are run by others [7]. In addition, the majority of the data centres (approximately 61%) are stand-alone facilities.

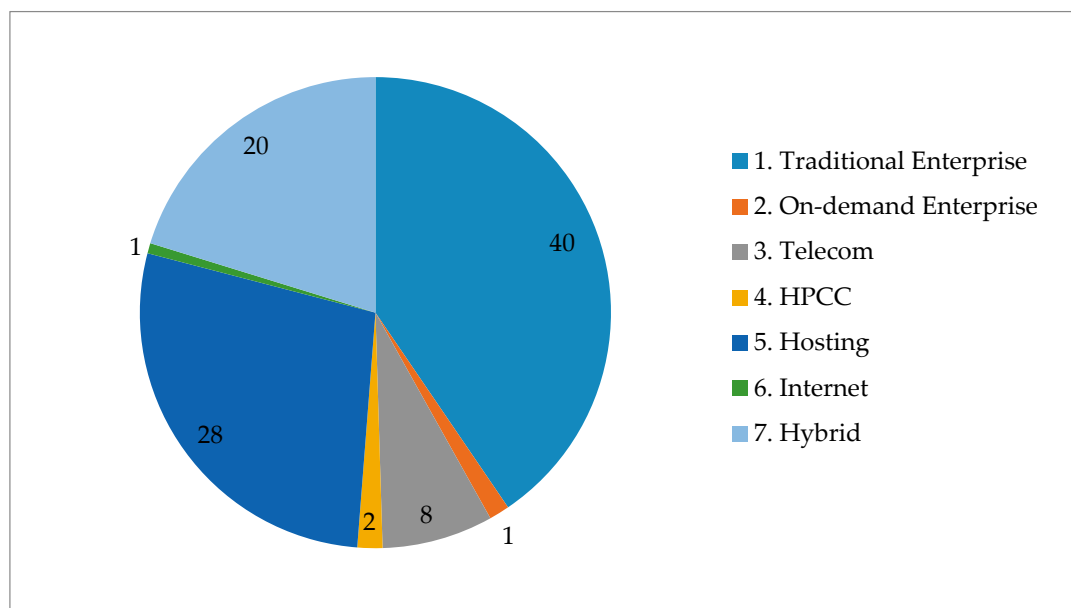


Figure 7. Percentage of each of the seven different sectors.

4.3. Geographical Distribution Analysis

Weather parameters such as the ambient temperature and relative humidity can have a significant impact on the energy consumption. A data centre located in an area with high temperatures and humidity is expected to consume more energy, as the cooling system will be working harder to maintain stable operating conditions within the facility. Table 3 shows the distribution of the data centres of our database in Europe by geographical location. The results were split into five different zones: The Nordic zone, the UK and Ireland zone, the Northern/Central European zone, the Southern European/Mediterranean zone and finally the Non-European zone. The last one is not assessed against the others or included further into the analysis, since the available data are not adequate and comparable.

The Nordic countries and the countries of Continental Europe appear to be the most efficient in terms of power effectiveness. This can be explained by the advanced technological progress in the sector as well as by the cold climate conditions that reduce the cooling energy demands of the facilities. The Nordic market, comprising Norway, Sweden, Denmark, Finland and Iceland, takes advantage of the plentiful renewable energy sources such as hydropower and thermal power [34].

On the other hand, the data centres located in countries of the European South have an average PUE value of 2.0, a figure that can be attributed to the warmer and humid climate.

The countries in Northern and Central Europe achieve low PUE values similar to the Nordic countries. Considering that three out of the four biggest data centre markets are located in Frankfurt, Paris and Netherlands, and the high number of sites in the Central European category, there are more data to support this assumption comparing to the lower number of sites in Scandinavia and Mediterranean countries. Finally, London is the biggest data centre market in Europe and Dublin is one of the newly emerging markets, with many US companies building data centres there. This fact explains the high number of data centres in that zone.

Table 3. Geographical zoning with temperature and relative humidity average data.

Geographical Zones	Countries	Temperature Range (°C)	RH Range (%)	Average PUE	Number of Data Centres
Nordic countries	Denmark, Finland, Norway, Sweden	18–26	20–80	1.71	13
UK and Republic of Ireland	England, Scotland, Wales, Northern Ireland, Republic of Ireland.	17–30	8–80	1.83	116
Northern/Central Europe	Austria, Belgium, France, Germany, Hungary, Luxembourg, The Netherlands, Portugal, Poland, Switzerland	14–28	16–75	1.72	122
Southern Europe/Mediterranean	Gibraltar, Greece, Italy, Malta, Spain, Turkey, Monaco, Romania, Bulgaria	16–26	20–80	2.00	30
Non EU	Republic of Mauritius, US	-	-	-	5

Depoorter et al. [35] claim that the ideal climate zones are the mixed-humid and warm-marine zones, in comparison to zones with lower dew point temperatures such as the very cold or cold dry zones, since the power and water consumed by the humidification system in sites in such locations are not insignificant. A specific analysis, normalising the DC efficiencies (PUE) in relation to their location climatic conditions (e.g., Degree Days), will be conducted in a future study in order to quantify the impact this geographical factor on DC energy consumption.

4.4. Free Cooling Technologies

Free cooling, also known as economizer cycle, takes advantage of the outside dry and cool climate conditions in order to reduce cooling costs through the refrigeration compressor workload reduction required to operate the chillers [9]. When the ambient temperature is sufficiently lower than the facility temperature, the heat naturally flows to the outside without the use of vapour-compression refrigeration system, offering significant energy savings [30]. Economised cooling can be retrofitted to some facilities. Where refrigeration plant can be reduced in size (or eliminated), operating and capital costs are reduced, including that of supporting electrical infrastructure [36]. Generally, the air-side economizers are used in data centres located in places with cold and dry weather conditions but are not suitable for hot and humid areas [9].

Newcombe et al. [37] present the four prevailing types of free cooling technologies that operate in the facilities, either individually or, more often, combined. These are also described in the CoC Best Practices supplementary document [23] that is discussed in Section 4.5.

- Direct Air (DA) free cooling: External air is used to cool the facility. Refrigeration systems are present to deal with humidity and high external temperatures if necessary. Exhaust air is re-circulated and mixed with intake air to control supply air temperature and humidity.
- Indirect Air (IA) free cooling: Re-circulated air within the facility is primarily passed through an air to air heat exchanger against external air (may have adiabatic cooling) to remove heat to the atmosphere.
- Direct Water (DW) free cooling: Chilled water cooled by the external ambient air via a free cooling coil. This may be achieved by dry coolers or by evaporative assistance through spray onto the dry coolers.
- Indirect Water (IW) free cooling: Chilled water is cooled by the external ambient conditions via a heat exchanger which is used between the condenser and chilled water circuits. This may be achieved by cooling towers or dry coolers, the dry coolers might have evaporative assistance through spray onto the coolers.

It is worth mentioning that some of the facilities use desiccant cooling techniques (i.e., Kyoto wheels) as an alternative mechanical system type apart from direct expansion (DX) and water chillers as an additional cooling technique in addition to the economizers. A desiccant cooling system includes a rotating wheel that can be up to six meters in diameter and picks up the heat from the data centre while rotating and releases it to the cooler outside environment as it completes the rotation. The warm air is evacuated with the use of fans [38].

In total, 170 the data centres analysed in this report (59%) have no free cooling system in place. However, the use of a free cooling system is not mandatory. In addition, 41 data centres use a combination of at least two free cooling technologies, and 78 data centres make use of only one type.

Figure 8 shows that the facilities that use four out of five economiser technologies described in the CoC achieve an average PUE between 1.75 and 1.89. The fifth type, “adsorption and other sorption techniques” (A), has been reported by only one data centre, so it will not be taken into consideration as an outlier. The graph shows that the most efficient cooling technology is the Indirect Water (IW) type, since the average PUE is the lowest and the minimum PUE reported is 1.10 which is the closest to ideal of 1.0, but the range of PUE is wider comparing to the others. On the other hand, Direct Water (DW) technique shows a narrower range of PUE values. It is noted that even some of the data centres that do not use free cooling or have not reported such data, have achieved very low PUE. Generally the PUE range of this group of data centres is the widest, with a facility reporting a PUE as low as 1.1.

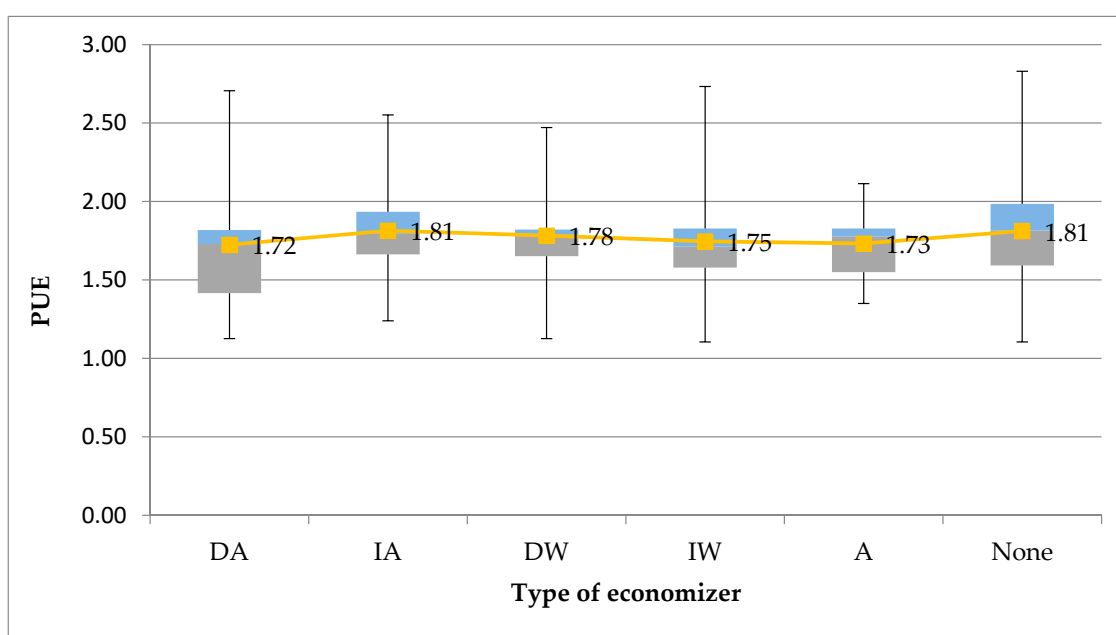


Figure 8. PUE range by type of free cooling technology (Direct Air = DA, Indirect Air = IA, Direct Water = DW, Indirect Water = IW, Adsorption = A).

4.5. Best Practices

The Best Practices document is a supplement to the Code of Conduct that provides information and support for data centre operators regarding measures to improve the energy efficiency requirements of their facilities.

Although not directly related to energy efficiency improvements, this document underlines also the importance of the use of energy supplied from alternative and sustainable energy sources (e.g., photovoltaic, wind power, shared-generation using biomass/bio-fuel, etc.); the use of renewable energies, even though it does not improve the energy efficiency (i.e., PUE), helps to reduce the overall data centres carbon foot print (i.e., associated CO₂ emissions) and improve their sustainability.

A subgroup of practices identifies the minimum expected level of energy saving activity that is required to be granted the Participant status. These practices are divided into five categories and each is signified by a different colour in the CoC registration form (see Table 4). Not all operators are able to implement all the expected practices due to physical, financial and other kind of constraints. In these cases, an explanation is provided describing the type of constraint, and if possible, recommending alternative practices as replacements aiming to the same energy savings [23]. A number of practices

are implemented in the vast majority of the reporting sites, some of them up to 96–97% of the total number of the data centres. For instance, approximately 97.2% of the facilities publish periodic, automatically-produced reports on energy consumption and environmental ranges, including the determination of PUE over the reporting period. Most of these practices require low capital expenditure or minimal changes to business practices, thus are considered “low-hanging fruit”.

Table 4. Minimum expected and optional Best practices categories.

Category	Description
Entire Data Centre	Expected to be applied to all existing IT, Mechanical and Electrical equipment within the data centre.
New Software	Expected during any new software install or upgrade
New IT Equipment	Expected for new or replacement IT equipment
New build or retrofit	Expected for any data centre built or undergoing a significant refit of the M & E equipment from 2011 onwards
Optional Practices	Optional (no background colour)

On the other hand, there are practices that are implemented by less than 1% of the total number of the data centres. In fact, most of them were introduced in the latest version of the Best Practices Guidelines, published by the JRC in 2016 [23]. Thus, it remains to be seen in a future study if the new data centres will adopt the new practices. In addition, there are no practices that have been implemented by all 288 sites.

It is also worth mentioning that each of the new versions of the guidelines contains a few changes. In some cases the numbering has changed and depending on the year of reporting the wording might be different. More specifically, Section 5 that refers to the cooling system demonstrates significant changes in the practices numbering between the 2014–2015 editions, along some crucial differences in the type of free-cooling technologies. It must also be taken into consideration that the free cooling best practices are not yet classified as mandatory or minimum expected, and none of the new technologies introduced in the 2015 version has been implemented so far by the reporting facilities.

The analysis shows that all 288 sites have implemented best practices since the beginning of the programme, albeit in different numbers. This is expected, since each version of the Best Practices guidelines contains a different number of mandatory or minimum-expected guidelines comparing to the previous one. The 2016 version incorporates 152 practices in total, 81 of which are characterised as minimum expected. New practices are added to the expected list in each version and others are replaced or amended.

Figure 9 illustrates the frequency best practices are implemented by the companies. Each bar of the graph represents the number of data centres that implement certain number of practices indicated in the horizontal axis. This is a qualitative analysis, so the number of practices is evaluated rather than the type or category as referred in Table 3. Indicatively, the majority of the participants implement between 26 and 50 best practices at the time of reporting, and approximately one-third of the participants implement between 51 and 81 practices. As mentioned before, the 2016 guidelines list 81 practices as mandatory, so it is concluded that there are only 16 sites that have implemented the minimum expected plus some optional practices, and 16 that have only implemented the 81 mandatory practices. It is important to specify that, since older versions are differentiated and contain fewer mandatory practices, it is expected that the 52–81 range is the most appropriate to describe the average number of data centres that comply with the practices criteria.

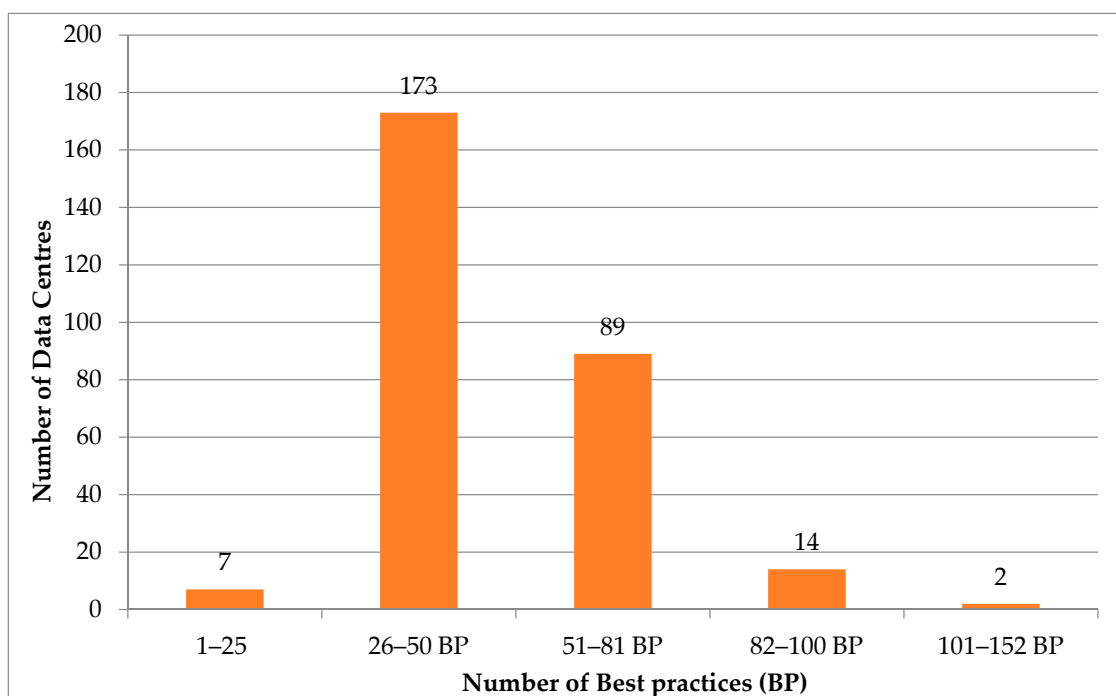


Figure 9. Frequency of the best practices implementations.

In general, the analysis shows that after 2015 the data centres that apply for the Code of Conduct Participant status already implement more practices than those that participated when the programme first started. This fact could be indicative of the technological trends towards a more energy efficient way of operating a facility, with more significant energy and financial savings.

5. Conclusions

The ICT and in particular data centres energy consumption is increasing globally and in the EU due to more Internet (including Internet of Things) and broadband communication. Against this trend, it is important to adopt policy actions to improve the energy efficiency of data centres and limits the energy consumption growth. The Code of Conduct for Data Centre Energy Efficiency is the only policy measure in the EU targeting data centres. It is complemented by important measures targeting the efficiency of data centres component in the frame of the Eco-design.

The study focuses on the emerging trends in energy efficiency in data centres, as evaluated using the data submitted voluntarily by various companies under the Code of Conduct for Data Centre Energy Efficiency programme. The number of participating data centres that have claimed the participant status is astounding, having reached the 345 applications so far. It must be noted that this is a unique study not only because of the size of the database but also in terms of reliability, as it is based on real data, instead of estimations.

The Code of Conduct is the only European independent programme that promotes data centres energy efficiency best practices and monitors the energy consumption. It is acknowledged as a successful example of a non-regulatory policy that has stimulated efficiency improvement in data centres. Every year, the number of companies applying for the participant status increases.

The analysis shows that the average Power Usage Effectiveness (PUE) of the facilities participating in the programme is declining year after year, reaching the value 1.64 in 2016. The total energy consumption so far of all the 289 approved Participants is approximately 3.7 TWh and the average annual electricity consumption has declined since the last survey in 2014. There is a number of facilities that already achieve PUE equal or below 1.2.

In addition, the PUE is compared against various parameters such as the facility size, the construction year and the Rated IT electrical load. It is concluded that either the very small or very large size data centres of the sample achieve the best PUE. As for the other parameters, the facilities that were built in the period between 2005 and 2010 and have an average of 5–10 MW capacity perform the best.

Furthermore, as expected, the data centres located in Scandinavia and Northern Europe are more energy efficient, mainly due to the cooler ambient conditions that facilitate economizer use. It derives that the type of economizer that contributes the most to energy savings is the Indirect Water type, followed by the Direct Water.

Finally, regarding the best practices implementation, most data centre of the dataset implement between 26 and 50 practices, significantly less than the mandatory number of 81, as required by the latest guidelines. However, the participants of recent years appear to perform better and implement more practices comparing to the past participants, and most of those practices are the most cost-effective and with the shortest payback period.

The future research task linked to the dataset is to track the efficiency improvements of each data centre over time, examine the operational or infrastructure changes, consider the geographical and climatic zones distribution of DC, include in the analysis the water consumption and conduct a multiple regression to assess which are the factors and characteristics that contribute more to increase DC energy efficiency.

The Code of Conduct is one of the most successful policies to improve energy efficiency in data centres in the EU and it could easily be replicated in other countries and regions based on the EU experience, which confirms that voluntary approaches could be effective in addressing climate and energy issues.

Acknowledgments: We thank Katalin Bodis, Officer at European Commission, Joint Research Centre, for the assistance with the geographical distribution map.

Author Contributions: Maria Avgerinou carried out the analysis and wrote the first draft of the paper. Paolo Bertoldi and Luca Castellazzi revised the paper.

Conflicts of Interest: The authors declare no conflict of interest.

References

1. Climate Action. Available online: https://ec.europa.eu/clima/policies/international/negotiations/paris_en (accessed on 1 November 2016).
2. IEA COP21. Available online: <http://www.iea.org/cop21/> (accessed on 27 November 2016).
3. Sims, R.E.H.; Schock, R.N.; Adegbulugbe, A.; Fenhann, J.; Konstantinaviciute, I.; Moomaw, W.; Nimir, H.B.; Schlamadinger, B.; Torres-Martínez, J.; Turner, C.; et al. Energy supply. In *Climate Change 2007: Mitigation. Contribution of Working Group III to the Fourth Assessment Report of the Intergovernmental Panel on Climate Change*, 1st ed.; Metz, B., Davidson, O.R., Bosch, P.R., Dave, R., Meyer, L.A., Eds.; Cambridge University Press: New York, NY, USA, 2007; ISBN 978-0-521-88011-4.
4. Energy Efficiency. Available online: <https://ec.europa.eu/energy/en/topics/energy-efficiency> (accessed on 23 October 2016).
5. Code of Conduct for Energy Efficiency in Data Centres. Available online: <https://ec.europa.eu/jrc/en/energy-efficiency/code-conduct/datacentres> (accessed on 15 October 2016).
6. Rong, H.; Zhang, H.; Xiao, S.; Li, C.; Hu, C. Optimizing energy consumption for data centres. *Renew. Sustain. Energy Rev.* **2016**, *58*, 674–691. [[CrossRef](#)]
7. Oró, E.; Depoorter, V.; Garcia, A.; Salom, J. Energy efficiency and renewable energy integration in data centres. Strategies and modelling review. *Renew. Sustain. Energy Rev.* **2015**, *42*, 429–445. [[CrossRef](#)]
8. Beaty, D.L. Internal IT load profile variability. *ASHRAE J.* **2013**, *55*, 72–74.
9. Khalaj, A.H.; Scherer, T.; Halgamuge, S.K. Energy, environmental and economical saving potential of data centres with various economizers across Australia. *Appl. Energy* **2016**, *183*, 1528–1549. [[CrossRef](#)]

10. Ni, J.; Bai, X. A review of air conditioning energy performance in data centres. *Renew. Sustain. Energy Rev.* **2017**, *67*, 625–640. [CrossRef]
11. UNFCCC. ICT Helping Tackle Climate Change Could Help Cut Global Emissions 20% by 2030. Available online: <http://newsroom.unfccc.int/unfccc-newsroom/ict-sector-helping-to-tackle-climate-change/> (accessed on 5 February 2017).
12. Whitehead, B.; Andrews, D.; Shah, A.; Maidment, G. Assessing the environmental impact of data centres Part 1: Background, energy use and metrics. *Build. Environ.* **2014**, *82*, 151–159. [CrossRef]
13. Sadler, R. Video Demand Drives up Global CO₂ Emissions. Available online: <http://climatenewsnetwork.net/video-demand-drives-global-co2-emissions/> (accessed on 8 February 2017).
14. Bertoldi, P. A market transformation programme for improving energy efficiency in data centres. In Proceedings of the MELs: Taming the Beast, ACEEE Summer Study on Energy Efficiency in Buildings, Pacific Grove, CA, USA, 17–22 August 2014.
15. Koomey, J. Growth in Data Centre Electricity Use 2005–2010. A Report by Analytical Press, Completed at the Request of the New York Times. Available online: http://www.co.twosides.info/download/Koomey_Johnathon_G-_Growth_In_Data_Center_Electricity_Use_2005_to_2010_2011.pdf (accessed on 15 September 2017).
16. Tatchell-Evans, M.; Kapur, N.; Summers, J.; Thompson, H.; Oldham, D. An experimental and theoretical investigation of the extent of bypass air within data centres employing aisle containment, and its impact on power consumption. *Appl. Energy* **2017**, *186*, 457–469. [CrossRef]
17. Van Heddeghem, W.; Lambert, S.; Lannoo, B.; Colle, D.; Pickavet, M.; Demeester, P. Trends in worldwide ICT electricity consumption from 2007 to 2012. *Comput. Commun.* **2014**, *50*, 67–76. [CrossRef]
18. Bertoldi, P.; Hirl, B.; Labanca, N. Energy Efficiency Status Report 2012. Electricity Consumption and Efficiency Trends in the EU-27. European Commission, Joint Research Centre 2012. Available online: <http://publications.jrc.ec.europa.eu/repository/handle/JRC69638> (accessed on 1 November 2016).
19. European Commission. Code of Conduct on Data Centres Energy Efficiency. Version 3.0.0 Participant Guidelines and Registration Form. Available online: https://e3p.jrc.ec.europa.eu/sites/default/files/documents/publications/participant_guidelines_v3.0.0.pdf (accessed on 15 September 2017).
20. Directive 2010/31/EU of the European parliament and of the council of 19 May 2010 on the energy performance of buildings (recast). *Off. J. Eur. Union* **2010**, *153/13*, 13–35.
21. Koomey, J. Worldwide Electricity Used in Data Centres. *Environ. Res. Lett.* **2008**, *3*, 3. [CrossRef]
22. Rezessy, S.; Bertoldi, P. Voluntary agreements in the field of energy efficiency and emission reduction: Review and analysis of experiences in the European Union. *Energy Policy* **2011**, *39*, 7121–7129. [CrossRef]
23. Acton, M.; Bertoldi, P.; Booth, J.; Flucker, S.; Newcombe, L.; Rouyer, A. 2017 Best Practices Guidelines for the EU Code of Conduct on Data Centre Energy Efficiency. Version 8.1.0. Available online: <http://iet.jrc.ec.europa.eu/energyefficiency/ict-codes-conduct/data-centres-energy-efficiency> (accessed on 15 September 2017).
24. European Commission. EU Code of Conduct on Data Centre Energy Efficiency. Introductory Guide for All Applicants. Version 3.1.2. Available online: <https://e3p.jrc.ec.europa.eu/publications/ict-code-conduct-introductory-guide-all-applicants-v312> (accessed on 15 September 2017).
25. Frequently Asked Question (FAQ) of the Code of Conduct for Data Centres Energy Efficiency Reporting form—Version 8.2. Available online: https://e3p.jrc.ec.europa.eu/sites/default/files/documents/publications/2017_reporting_form_v8.2.xls (accessed on 15 September 2017).
26. Chiaraviglio, L.; Cianfrani, A.; Listanti, M.; Liu, W.; Polverini, M. Lifetime-Aware Cloud Data Centers: Models and Performance Evaluation. *Energies* **2016**, *9*, 470. [CrossRef]
27. The Green Grid Association. The Green Grid Data Center Power Efficiency Metrics: PUE and DciE 2007. Available online: http://www.premiersolutionsco.com/wp-content/uploads/TGG_Data_Center_Power_Efficiency_Metrics_PUE_and_DCiE.pdf (accessed on 15 September 2017).
28. Horner, N.; Azevedo, I. Power usage effectiveness in data centers: Overloaded and underachieving. *Electr. J.* **2016**, *29*, 61–69. [CrossRef]
29. Sharma, M.; Arunachalam, K.; Sharma, D. Analysing the data center efficiency by using PUE to make data centers more energy efficient by reducing the electrical consumption and exploring new strategies. *Procedia Comput. Sci.* **2015**, *48*, 142–148. [CrossRef]

30. International Organization for Standardization. *ISO/IEC 30134-2:2016 Information Technology—Data Centres—Key Performance Indicators—Part 2: Power Usage Effectiveness (PUE)*; International Organization for Standardization: Geneva, Switzerland, 2016.
31. Uptime Institute. *2013 Data Centre Industry Survey*; Uptime Institute: Washington, WA, USA, 2013.
32. The Green Grid. *Harmonizing Global Metrics for Data Centre Energy Efficiency* (2014). Available online: <https://www.thegreengrid.org/en/resources/library-and-tools/215-Harmonizing-Global-Metrics-for-Data-Center-Energy-Efficiency-%E2%80%93-March-2014> (accessed on 15 September 2017).
33. Salom, J.; Urbaneck, T.; Oró, E. *Advanced Concepts for Renewable Energy Supply of Data Centres*. 2017 River Publisher. Available online: https://www.riverpublishers.com/pdf/ebook/RP_9788793519411.pdf (accessed on 15 September 2017).
34. Smolaks, M. Nordic Data Centre Market Expected to Triple Power by 2017. Available online: <http://www.datacenterdynamics.com/content-tracks/design-build/nordic-data-center-market-expected-to-triple-power-by-2017/94767.fullarticle> (accessed on 20 December 2016).
35. Depoorter, V.; Oró, E.; Salom, J. The location as an energy efficiency and renewable energy supply measure for data centres in Europe. *Appl. Energy* **2015**, *140*, 338–349. [CrossRef]
36. Zhang, H.; Shao, S.; Xu, H.; Zou, H.; Tian, C. Free cooling of data centres: A review. *Renew. Sustain. Energy Rev.* **2014**, *35*, 171–182. [CrossRef]
37. Newcombe, L.; Acton, M.; Booth, J.; Flucker, S.; Rabbetts, A.; Rouyer, A. 2014 Best Practices for the EU Code of Conduct on Data Centres. Version 5.1.1. Available online: <http://www.daxten.com/de/download/white-papers/2014%20EU%20Code%20of%20Conduct%20Best%20Practices%20Data%20Centre.pdf> (accessed on 10 February 2017).
38. McFarlane, R. Look to the Kyoto Wheel to Maximize Free Data Center Cooling. Available online: <http://searchdatacenter.techtarget.com/tip/Look-to-the-Kyoto-wheel-to-maximize-free-data-center-cooling> (accessed on 7 February 2017).



© 2017 by the authors. Licensee MDPI, Basel, Switzerland. This article is an open access article distributed under the terms and conditions of the Creative Commons Attribution (CC BY) license (<http://creativecommons.org/licenses/by/4.0/>).