

Supporting information

Expanded $\text{K}_{0.37}\text{Fe}_{0.04}\text{Al}_{0.07}\text{Mn}_{0.89}\text{O}_2$ Layered Material as a High-Performance Cathode in Sodium-Ion Batteries

Pan Ning ¹, Xinbin Mao ¹, Li Zhou ¹, Hongrui Wang ², Feng Zhang ², Congshan Zhou ^{1,*}, Bei Long ^{3,*}, Yuping Wu ⁴ and Xiongwei Wu ^{2,*}

¹ College of Chemistry and Chemical Engineering, Hunan Institute of Science and Technology, Yueyang 414006, China

² School of Chemistry and Materials Science, Hunan Agricultural University, Changsha 410128, China

³ School of Chemistry, Xiangtan University, Xiangtan 411105, China

⁴ School of Energy and Environment, Southeast University, Nanjing 211189, China

* Correspondence: zhoucongs@outlook.com (C.Z.); longbei@xtu.edu.cn (B.L.); wxw@hunau.edu.cn (X.W.)

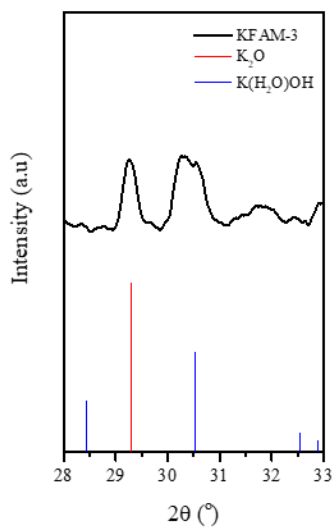


Figure S1. XRD pattern of KFAM-3.

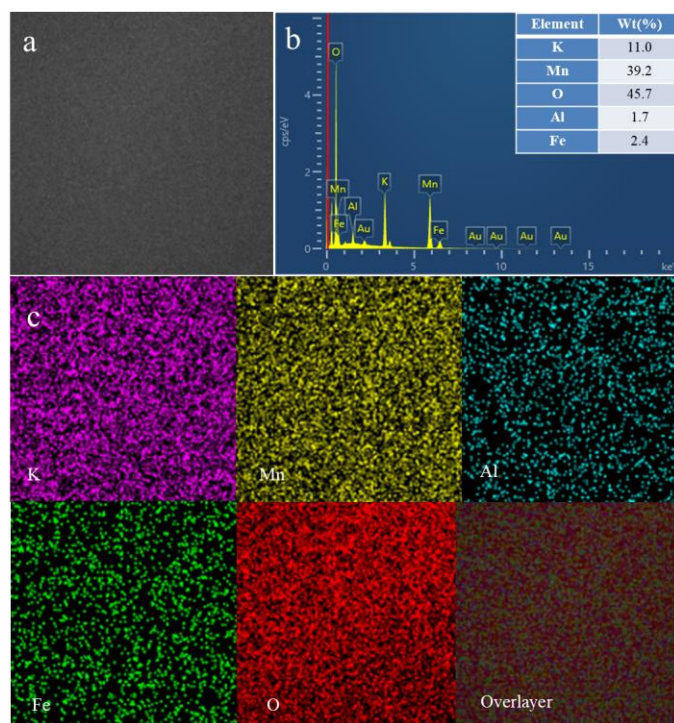


Figure S2. (a) ADF image, (b) EDX spectrum and (c) elemental mapping of KFAM-1.

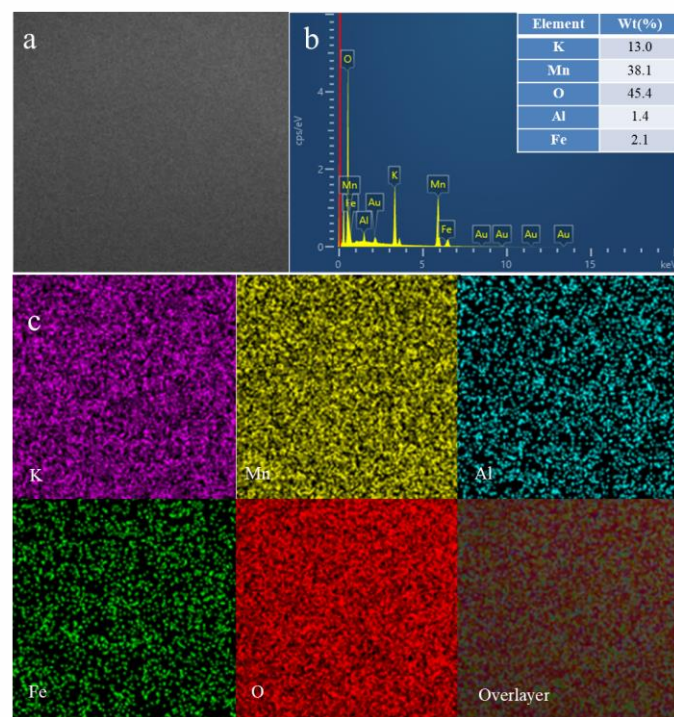


Figure S3. (a) ADF image, (b) EDX spectrum and (c) elemental mapping of KFAM-3.

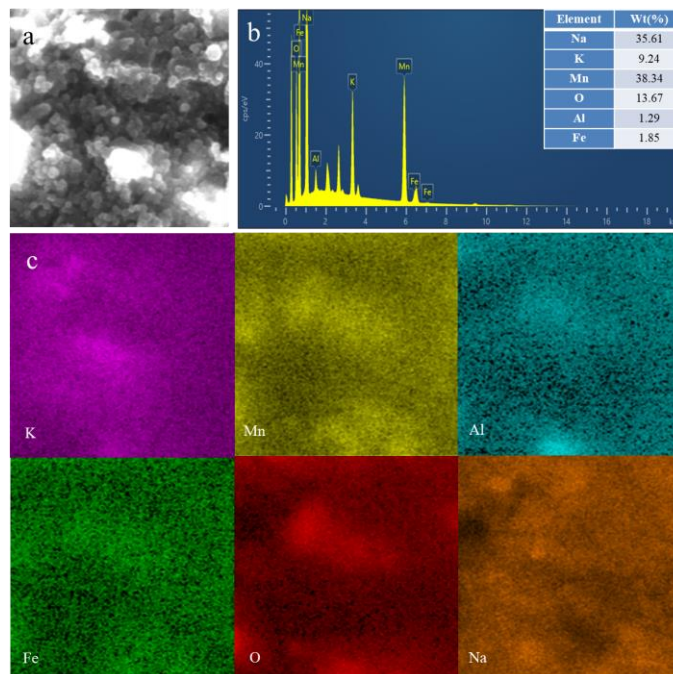


Figure S4. (a) ADF image, (b) EDX spectrum and (c) elemental mapping of KFAM-1 after cycling.

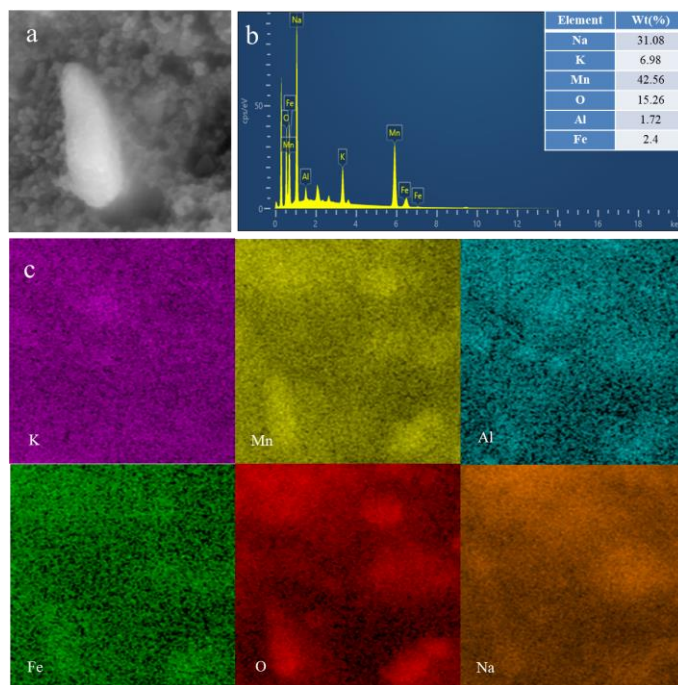


Figure S5. (a) ADF image, (b) EDX spectrum and (c) elemental mapping of KFAM-2 after cycling.

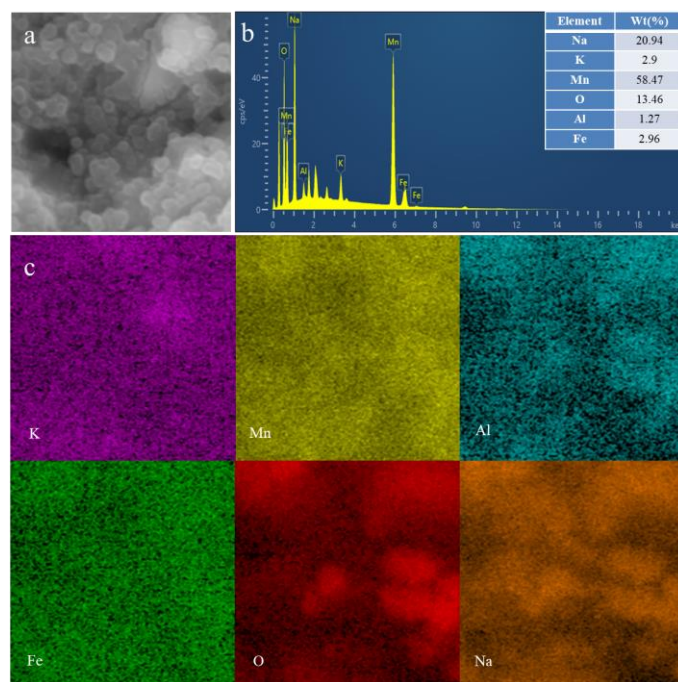


Figure S6. (a) ADF image, (b) EDX spectrum and (c) elemental mapping of KFAM-3 after cycling.

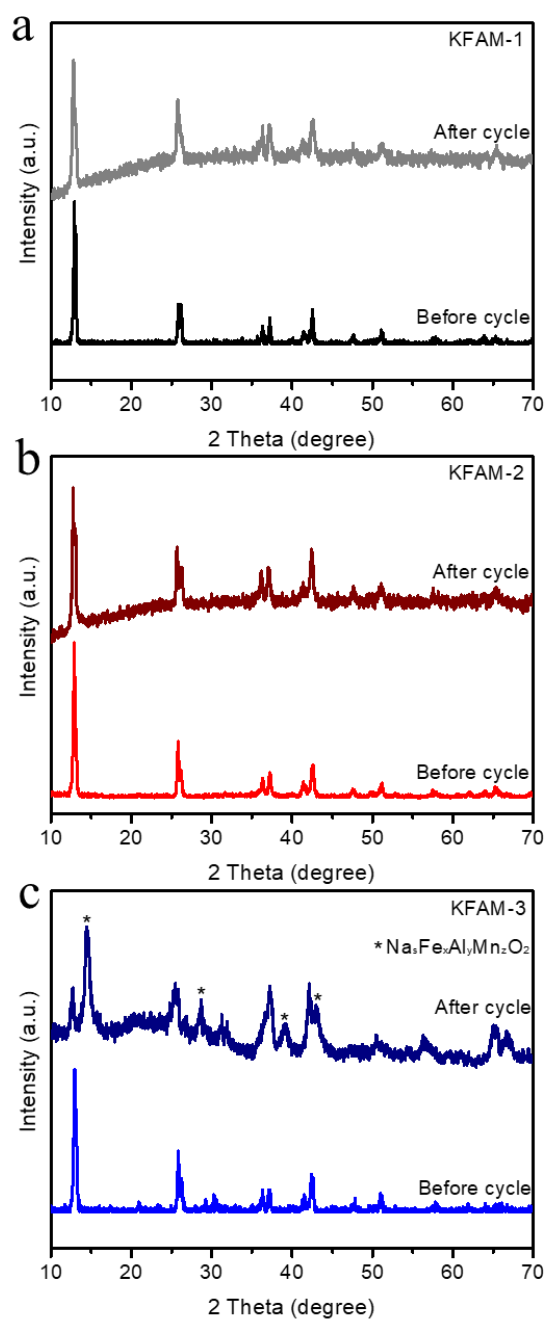


Figure S7. XRD patterns of (a) KFAM-1, (b) KFAM-2 and (c) KFAM-3 before and after cycle.