

Article

Effect of Multi-Phosphonate Coating of Titanium Surfaces on Osteogenic Potential

Christian Wehner ¹, Christian Behm ^{2,3}, Selma Husejnagic ¹, Andreas Moritz ¹, Xiaohui Rausch-Fan ^{1,2} and Oleh Andrukhov ^{2,*}

¹ Division of Conservative Dentistry and Periodontology, University Clinic of Dentistry, Medical University of Vienna, 1090 Vienna, Austria; christian.wehner@meduniwien.ac.at (C.W.); selma.husejnagic@meduniwien.ac.at (S.H.); andreas.moritz@meduniwien.ac.at (A.M.); xiaohui.rausch-fan@meduniwien.ac.at (X.R.-F.)

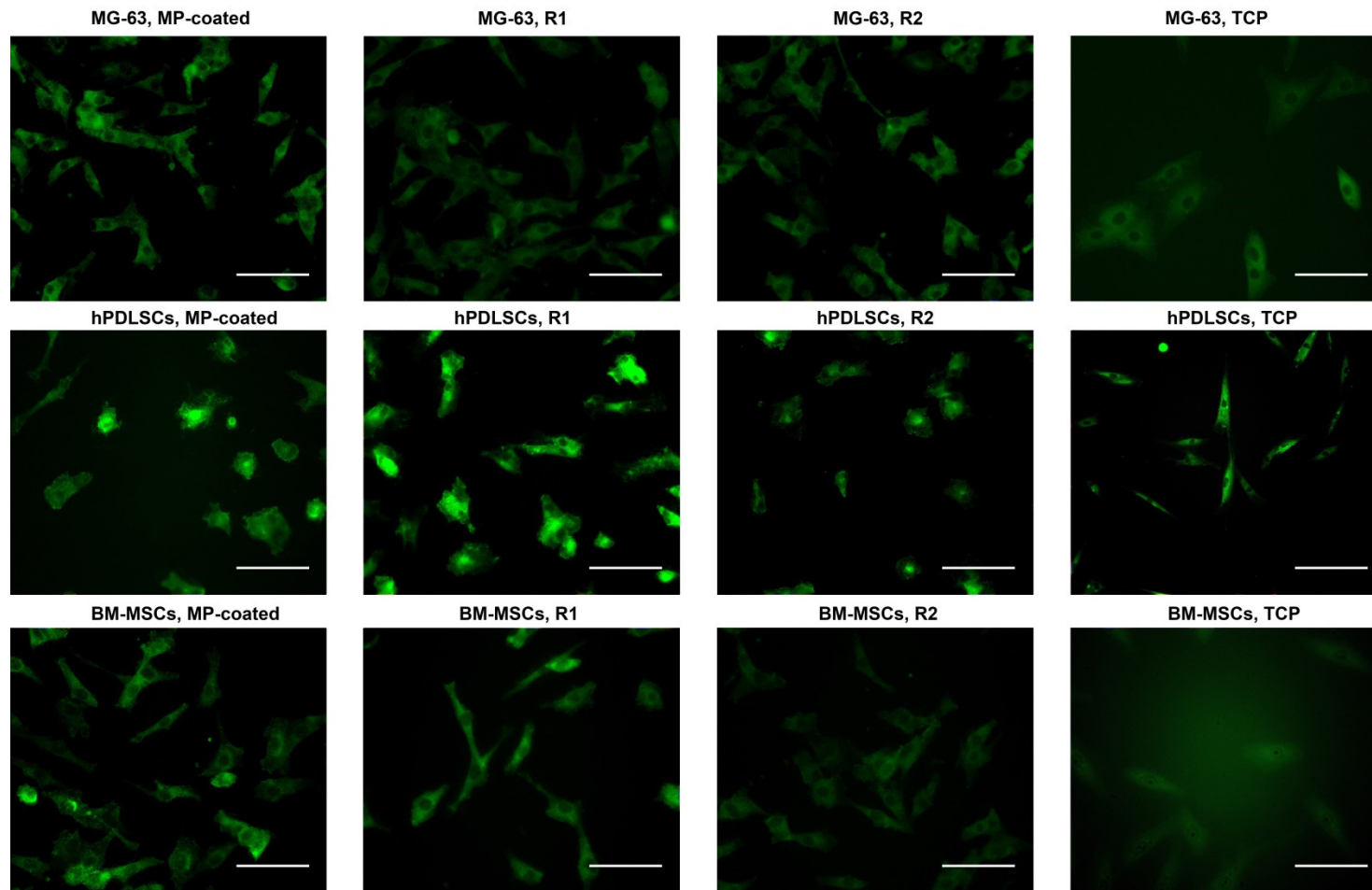
² Competence Center for Periodontal Research, University Clinic of Dentistry, Medical University of Vienna, 1090 Vienna, Austria; christian.behm@meduniwien.ac.at

³ Division of Orthodontics, University Clinic of Dentistry, Medical University of Vienna, 1090 Vienna, Austria

* Correspondence: oleh.andrukhov@meduniwien.ac.at; Tel.: +43-1-40070-2620

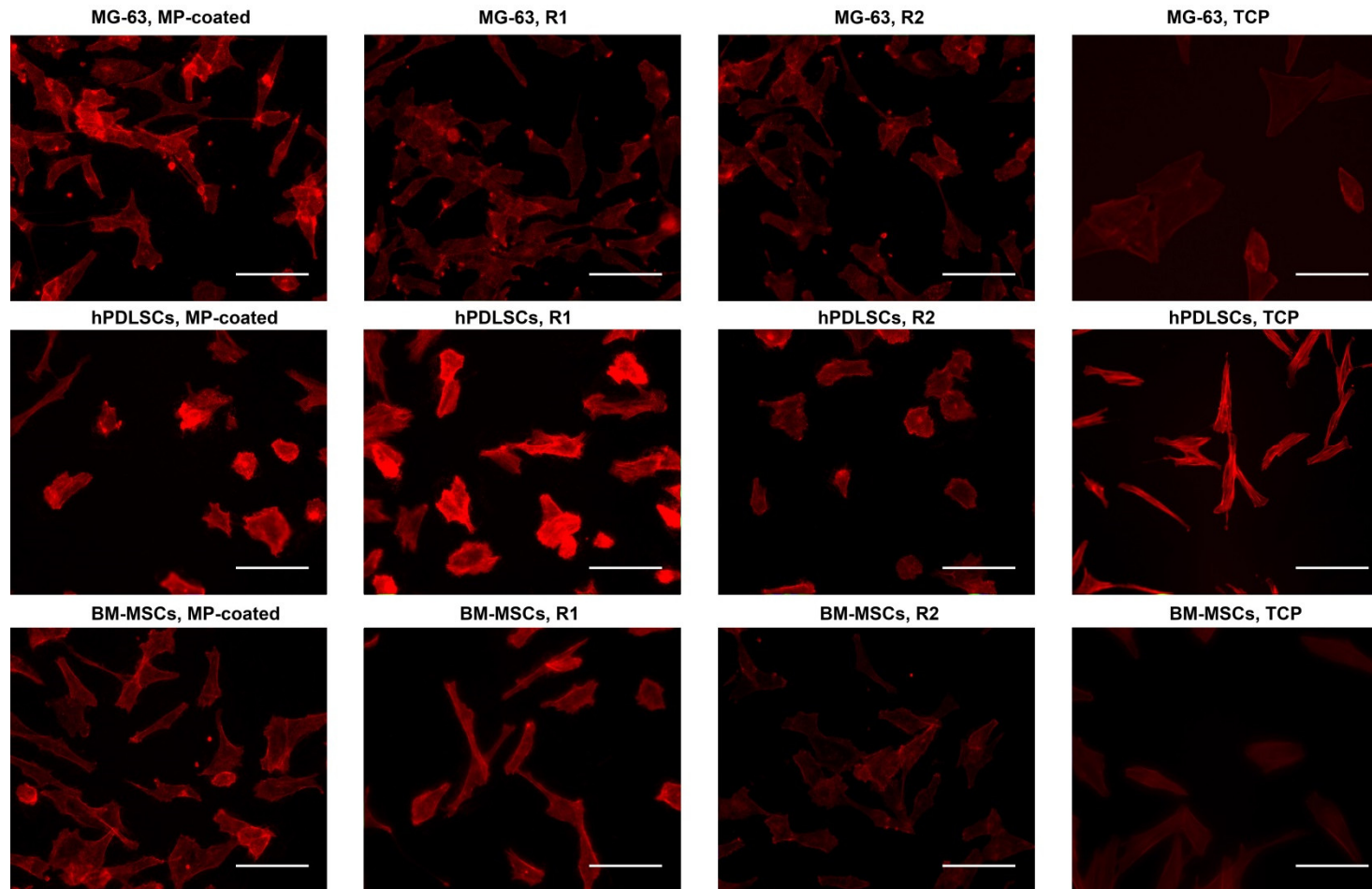
Received: 6 November 2020; Accepted: 15 December 2020; Published: 17 December 2020

Supplementary Information



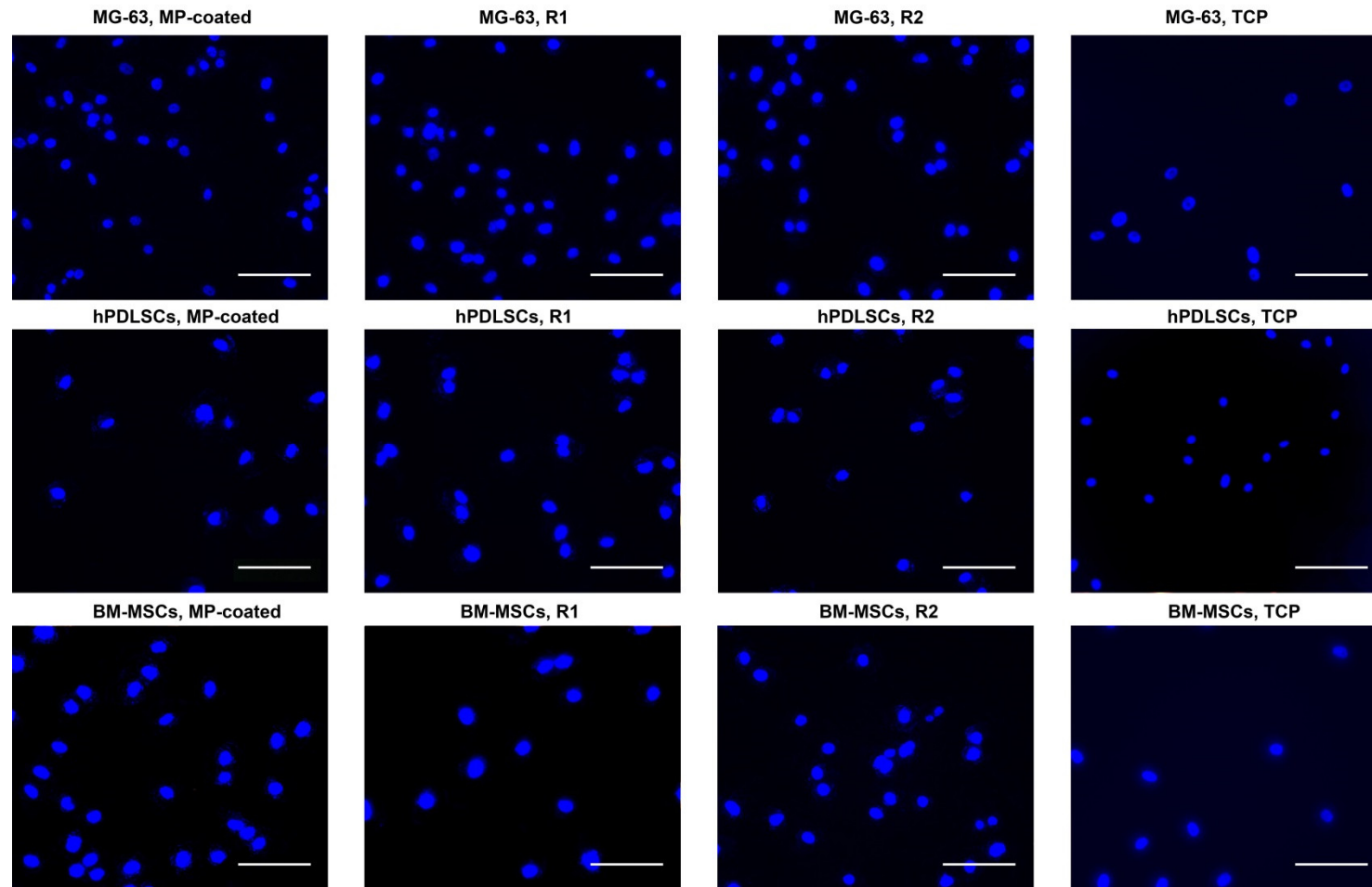
Supplementary Figure S1. Fluorescence microscopy analysis of focal adhesions in MG-63 cells, hPDLSCs, and BM-MSCs cultured on titanium surfaces and TCP.

Cell culture was performed on MP-coated as well as reference surfaces (R1, R2) and TCP as a control for 1 and 2 days; focal adhesions were stained with anti-Vinculin and counterstained with FITC (green). Scale bars correspond to 100 μm.



Supplementary Figure S2. Fluorescence microscopy analysis of F-actin in MG-63 cells, hPDLSCs, and BM-MSCs cultured on titanium surfaces and TCP.

Cell culture was performed on MP-coated as well as reference surfaces (R1, R2) and TCP as a control for 1 and 2 days; F-actin was stained with TRITC-conjugated Phalloidin (red). Scale bars correspond to 100 μm.



Supplementary Figure S3. Fluorescence microscopy analysis of nuclei in MG-63 cells, hPDLSCs, and BM-MSCs cultured on titanium surfaces and TCP.

Cell culture was performed on MP-coated as well as reference surfaces (R1, R2) and TCP as a control for 1 and 2 days; nuclei were stained with DAPI (blue). Scale bars correspond to 100 μm.

Publisher's Note: MDPI stays neutral with regard to jurisdictional claims in published maps and institutional affiliations.



© 2020 by the authors. Licensee MDPI, Basel, Switzerland. This article is an open access article distributed under the terms and conditions of the Creative Commons Attribution (CC BY) license (<http://creativecommons.org/licenses/by/4.0/>).